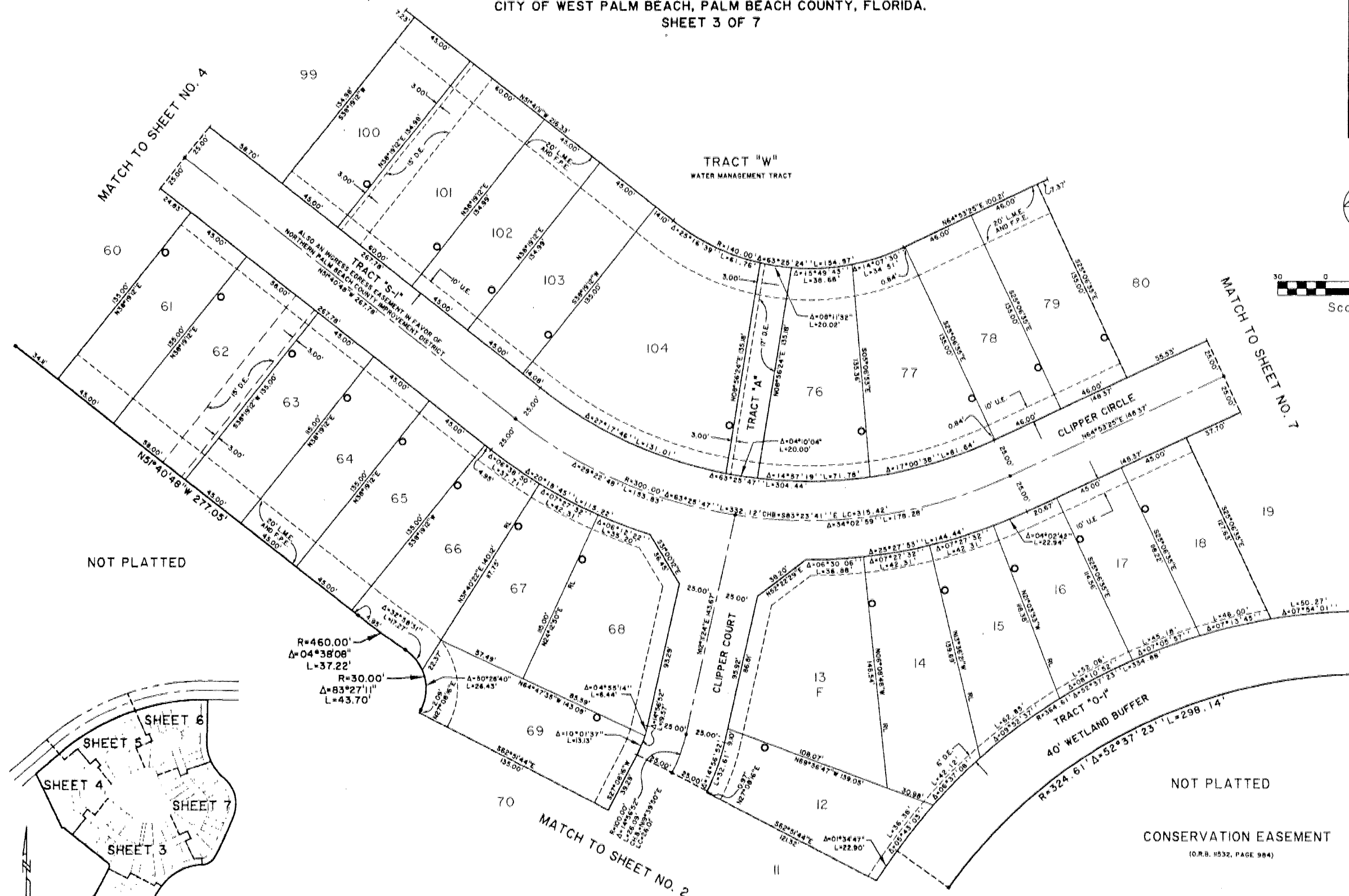
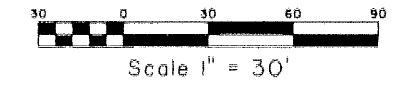


# BAYWINDS R.P.D. PLAT NO. 4

BEING A PORTION OF SECTION 19, TOWNSHIP 43 SOUTH, RANGE 42 EAST,  
 LYING IN SECTION 19, TOWNSHIP 43 SOUTH, RANGE 42 EAST,  
 CITY OF WEST PALM BEACH, PALM BEACH COUNTY, FLORIDA.  
 SHEET 3 OF 7

184

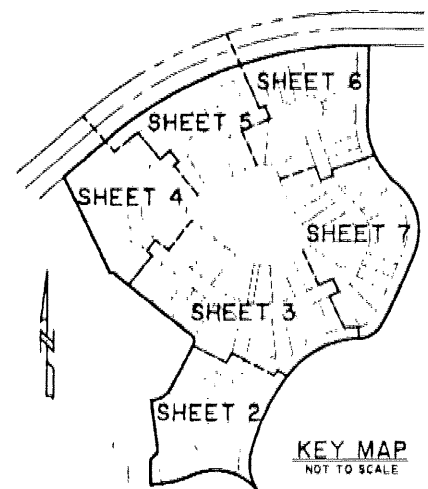
STATE OF FLORIDA  
 COUNTY OF PALM BEACH  
 THIS PLAT WAS FILED FOR RECORD AT \_\_\_\_\_  
 \_\_\_\_\_ M., THE \_\_\_\_\_ DAY OF \_\_\_\_\_, 2001  
 AND DULY RECORDED IN PLAT BOOK NO. \_\_\_\_\_  
 ON PAGE \_\_\_\_\_  
 DOROTHY H. WILKIN, CLERK OF THE CIRCUIT COURT  
 BY \_\_\_\_\_



NOT PLATTED

NOT PLATTED

CONSERVATION EASEMENT  
 (O.R.B. 11532, PAGE 984)



	Landmark Surveying & Mapping Inc. 1850 Forest Hill Boulevard Ph (561) 433-5405 Suite 100 W.P.B. Florida LB # 4398
	<b>BAYWINDS R.P.D. PLAT NO. 4</b> (TRACT C)