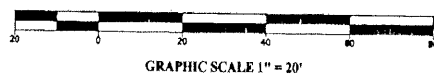


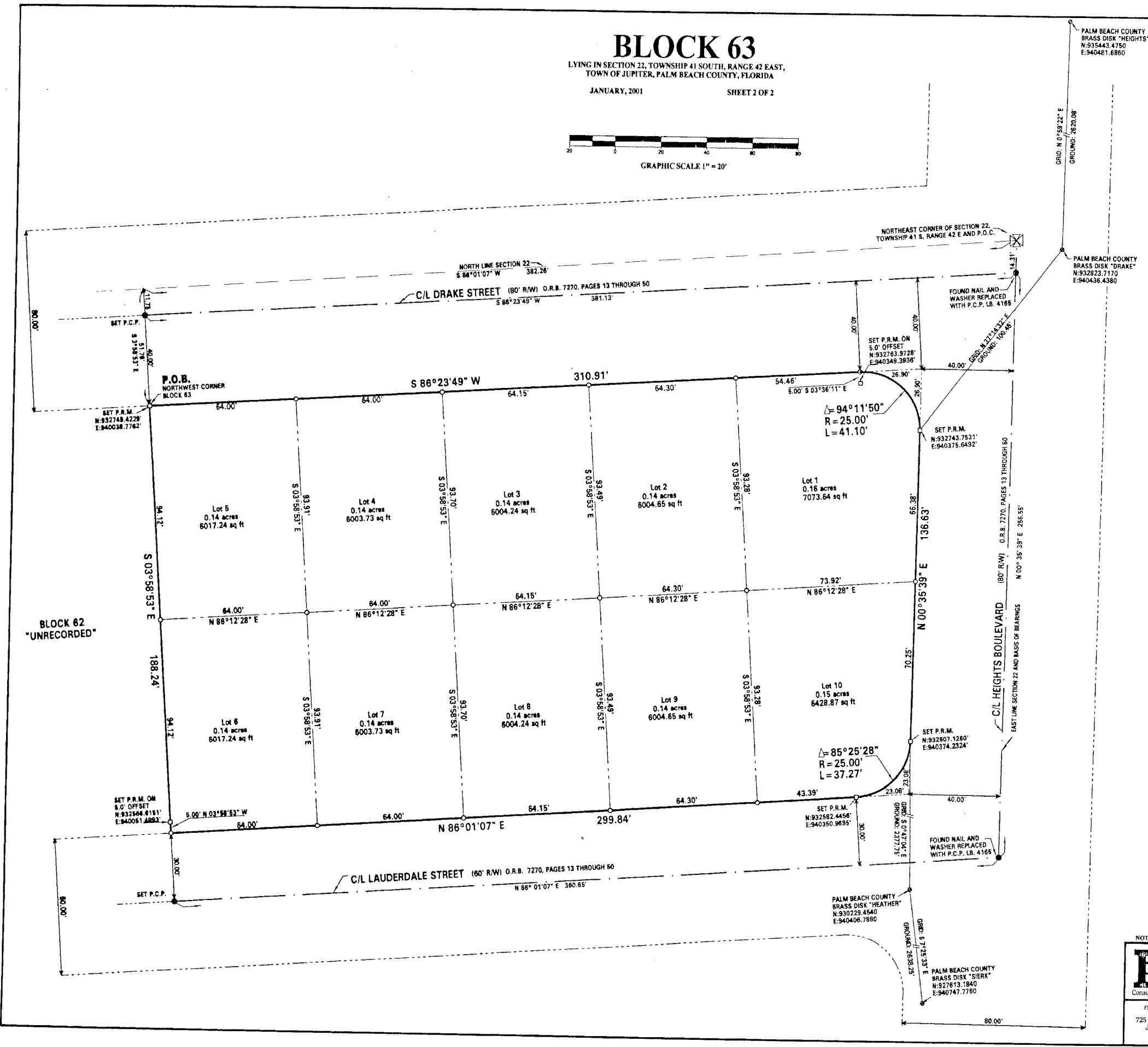
BLOCK 63

LYING IN SECTION 22, TOWNSHIP 41 SOUTH, RANGE 42 EAST,
TOWN OF JUPITER, PALM BEACH COUNTY, FLORIDA

JANUARY, 2001 SHEET 2 OF 2



193



SURVEYOR'S NOTES:

- All bearings shown hereon are relative to the State Plane Coordinate System, NAD 83, 1990 adjustment and are based on the East line of Section 22 having a bearing of N. 00° 35' 39" E.
- No structure or building or any kind of landscaping shall be placed on or within any easement without the prior written consent of all easement beneficiaries and the Town Engineer.
- Building setback lines shall be as required by the current Building and Zoning regulations of the Town of Jupiter, Palm Beach County and/or any restrictive covenants pertaining to that reflected by this plat.
- Abbreviations used on this plat are as follows:
 ⊙ = Set (P.C.P.) Permanent Control Point No. LB 4165.
 ⊠ = Set (P.R.M.) Permanent Reference Monument No. LB 4165, unless otherwise indicated.
 ○ = Set 5/8" iron rod and cap No. LB 4165
 C/L = Centerline
 P.O.C. = Point of Commencement
 P.O.B. = Point of Beginning
 R/W = Right of way
 O.R.B. = Official record Book
 R = Curve Radius
 L = Curve Length
 Δ = Curve Delta
 sq. ft. = Square Feet
 N: 00.00 = State Plane Coordinate Northing
 E: 00.00 = State Plane Coordinate Easting
- State Plane Coordinate Information.
 A. Coordinates shown are grid
 B. Datum = NAD 83, 1990 Adjustment
 C. Zone = Florida East
 D. Linear unit = US Survey Foot
 E. Coordinate system 1983 State Plane Transverse Mercator Projection
 F. All distances are ground
 G. Scale Factor = 1.00004178
 H. Ground distance x scale factor = grid distance
- NOTICE: This plat, as recorded in its graphic form, is the official depiction of the subdivided lands described herein and will in no circumstances be supplanted in authority by any other graphic or digital form of the plat. There may be additional restrictions that are not recorded on this plat that may be found in the Public Records of this county.

NOTE: THIS INSTRUMENT WAS PREPARED BY DONALD D. DANIELS IN THE OFFICE OF DONALD D. DANIELS, INC.

<p>DONALD D. DANIELS, INC. Consulting Surveyors & Mappers</p> <p>Florida Certificate License No. 4165 725 North A-1-A, Suite C-111 Jupiter, Florida 33477 TEL: (561) 747-9894</p>	BLOCK 63		
	REF: 22/41/42	Revised:	SCALE: 1" = 20'
	OFFICE: DEB		DWG. NO.: 99-07
	DATE: JANUARY, 2001		SHEET 2 OF 2