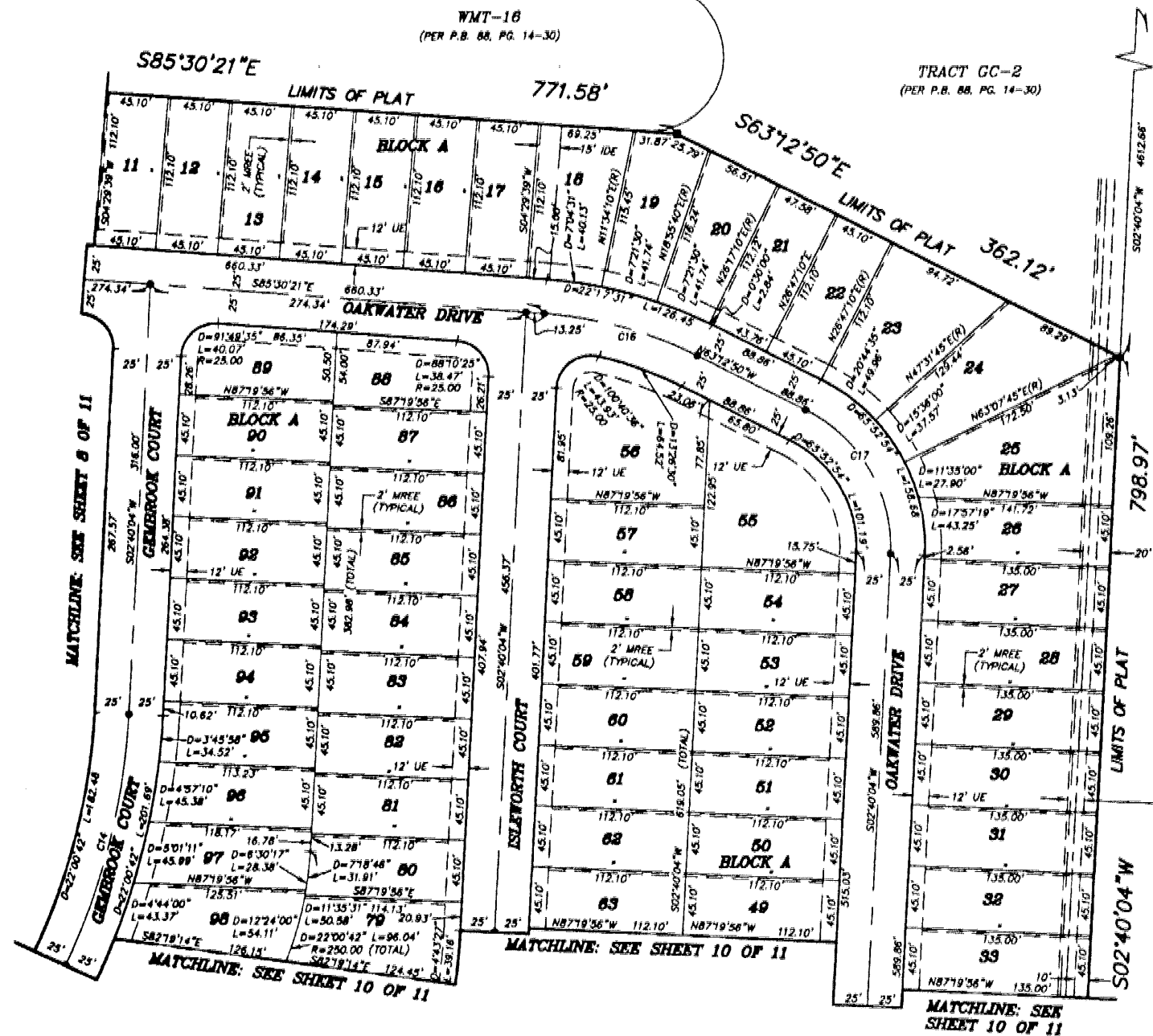
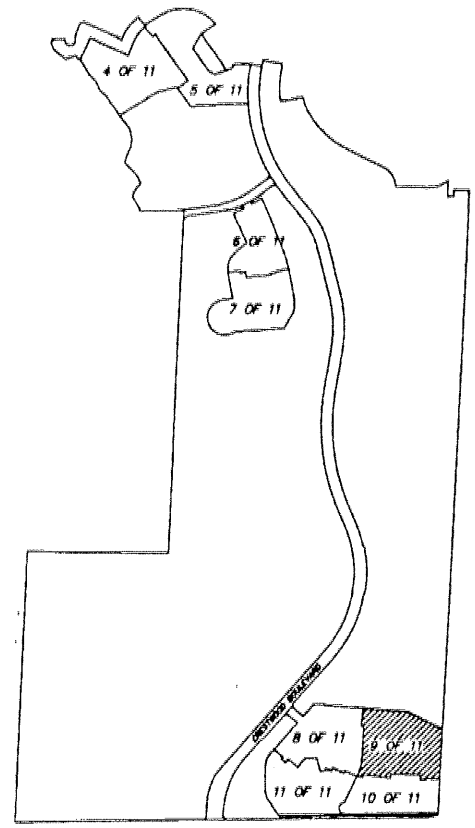
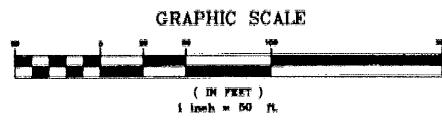


MADISON GREEN-PLAT No. 1, PARCEL "A", PARCEL "H" AND PARCEL "K", REPLAT
 BEING A REPLAT OF ALL OF PARCEL "A", PARCEL "H" AND PARCEL "K", AS SHOWN ON MADISON GREEN -
 PLAT No. 1, AS RECORDED IN PLAT BOOK 88, PAGES 14 THROUGH 30 OF THE
 PUBLIC RECORDS OF PALM BEACH COUNTY FLORIDA, IN SECTIONS 15 AND 22, TOWNSHIP 43 SOUTH,
 RANGE 41 EAST VILLAGE OF ROYAL PALM BEACH, PALM BEACH COUNTY, FLORIDA
 FEBRUARY 2001
 SHEET 9 OF 11



- LEGEND:**
- D= DELTA (CENTRAL ANGLE)
 - L= LENGTH
 - R= RADIUS
 - CB= CHORD BEARING
 - CD= CHORD DISTANCE
 - PSM= PROFESSIONAL SURVEYOR AND MAPPER
 - PLS= PROFESSIONAL LAND SURVEYOR
 - LAE= LIMITED ACCESS EASEMENT
 - MREE= MAINTENANCE ROOF AND EAVES EASEMENT
 - UE= UTILITY EASEMENT
 - IDE= INTERIOR DRAINAGE EASEMENT
 - CME= CANAL MAINTENANCE EASEMENT
 - WMT= WATER MANAGEMENT TRACT
 - GC= GOLF COURSE
 - ORB= OFFICIAL RECORD BOOK
 - P.B.= PLAT BOOK
 - P.G.= PAGE
 - LB= LICENSED BUSINESS
 - (R)= RADIAL
 - = PERMANENT REFERENCE MONUMENT
 - = PERMANENT CONTROL POINT



CURVE TABLE					
CURVE	DELTA	LENGTH	RADIUS	CHORD BEARING	CHORD DISTANCE
C14	22°00'42"	192.09	500.00'	N13°40'25"E	190.91
C16	22°12'31"	116.72	300.00'	N74°21'35"W	115.99
C17	65°32'34"	128.93	113.00'	N30°16'23"W	122.69

MADISON GREEN-PLAT No.1, PARCEL "A", PARCEL "H" AND PARCEL "K", REPLAT

NICK MILLER, INC.
 Surveying & Mapping Consultants

SUITE 105
 2560 RCA BLVD.
 PALM BEACH GARDENS, FLORIDA 33410
 TEL 561 627-5200 FAX 561 627-0983
 D.B.P.R. LICENSED BUSINESS No. 4318

SHEET NO. **9**

SCALE: 1"=50'

DATE: FEB 2000

JOB NO. 99043AK

FILE: 99043AKS-9