

# MIRASOL PARCELS H AND I

PART OF GOLF DIGEST P.C.D.  
SECTION 3, TOWNSHIP 42 SOUTH, RANGE 42 EAST,  
CITY OF PALM BEACH GARDENS,  
PALM BEACH COUNTY, FLORIDA  
SHEET 7 OF 8

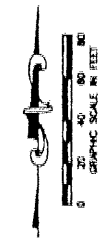
- LEGEND**
- Δ CENTRAL (DELTA) ANGLE
  - CH CHORD
  - DE DRAINAGE EASEMENT
  - IEE INGRESS-EGRESS EASEMENT
  - L ARC LENGTH
  - (NR) NON-RADIAL
  - NPBC/D NORTHERN PALM BEACH COUNTY IMPROVEMENT DISTRICT OFFICIAL RECORD BOOK
  - ORB ORB PEDESTRIAN ACCESS EASEMENT
  - PAE PEDESTRIAN ACCESS EASEMENT
  - PB PLAT BOOK
  - PG(S) PAGE(S)
  - PCD PLANNED COMMUNITY DEVELOPMENT
  - PCP PERMANENT CONTROL POINT
  - R RADIUS
  - (TYP) TYPICAL
  - UE UTILITY EASEMENT
  - WLE WATER LINE EASEMENT
  - WMAE WATER MANAGEMENT ACCESS EASEMENT
  - WME WATER MANAGEMENT EASEMENT
  - WAME WATER MANAGEMENT MAINTENANCE EASEMENT
  - PERMANENT REFERENCE MONUMENT FOUND LB 04B (4" x 4" CONCRETE)
  - PERMANENT REFERENCE MONUMENT SET LB 04B (4" x 4" CONCRETE)
  - PERMANENT CONTROL POINT SET LB 04B
  - C CENTERLINE
  - ↓ ZERO LOT LINE INDICATOR



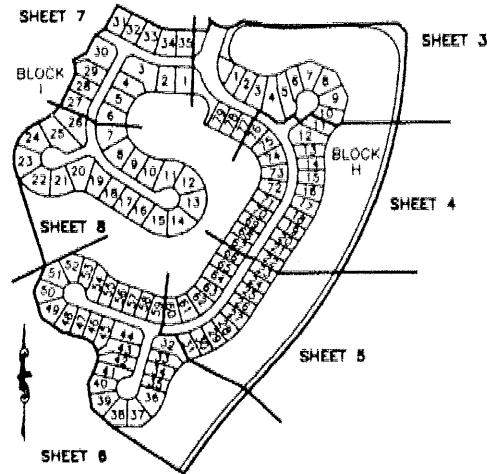
STATE OF FLORIDA  
COUNTY OF PALM BEACH

THIS PLAT WAS FILED FOR RECORD  
THIS \_\_\_\_\_ DAY OF \_\_\_\_\_  
AD, 2001 AND DULY RECORDED  
IN PLAT BOOK \_\_\_\_\_ ON PAGES  
\_\_\_\_\_ AND \_\_\_\_\_

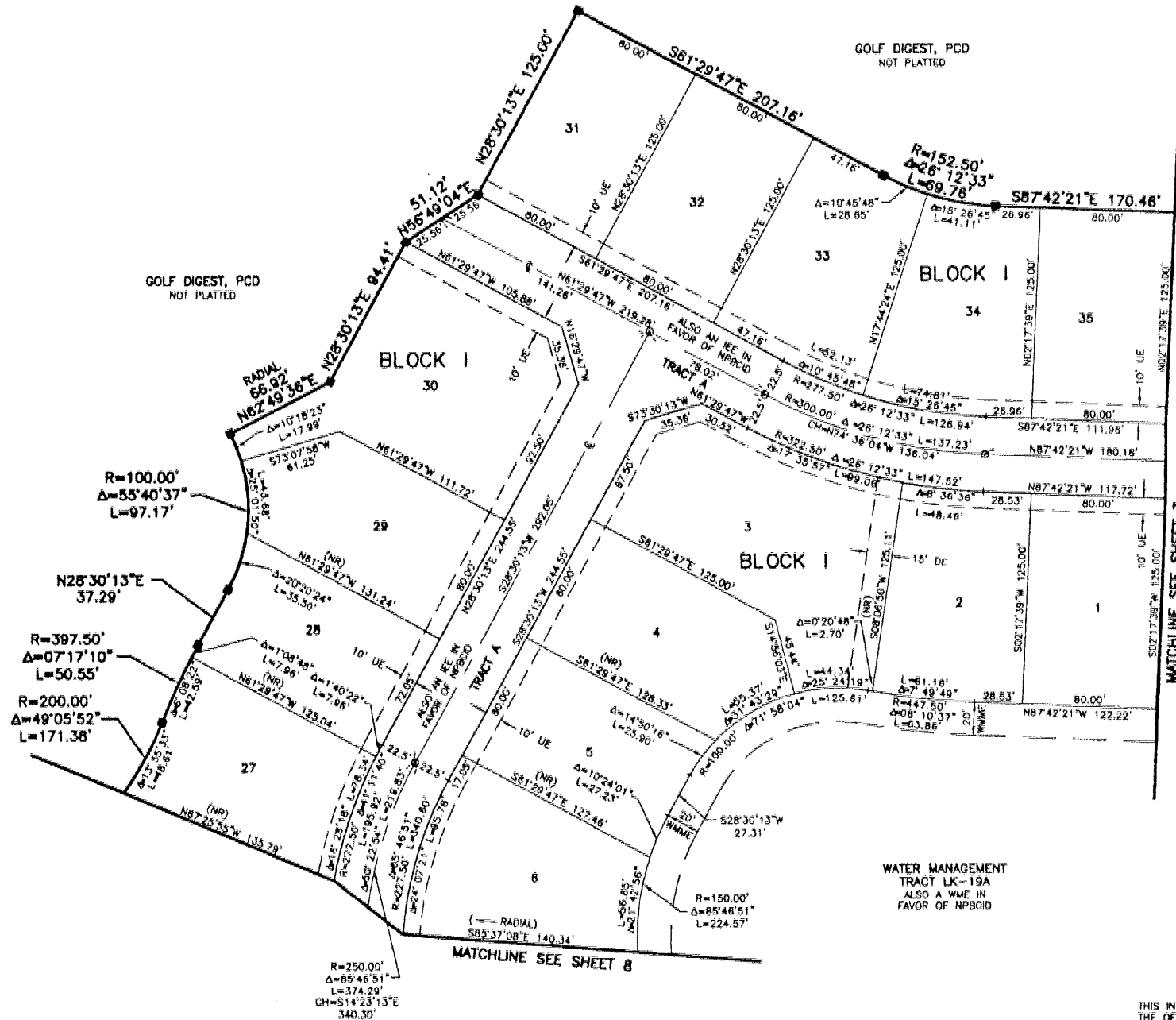
DOROTHY H. WILKEN, CLERK  
BY: \_\_\_\_\_



CIRCUIT COURT SEAL



SHEET LOCATION MAP  
NOT TO SCALE



THIS INSTRUMENT WAS PREPARED BY MARY HANNA CLODFELTER, P.S.M. IN THE OFFICES OF MOCK, ROOS & ASSOCIATES, INC., 5720 CORPORATE WAY, WEST PALM BEACH, FLORIDA 33407.

SHEET 7 OF 8

SCALE:  
1" = 40'

P.A. NO.:  
99321.00

DATE:  
SEPTEMBER 2000

DRAWING NO.:  
42-42-03-41

FLORIDA L.B. NO. 48

**MOCK • ROOS**  
ENGINEERS • SURVEYORS • PLANNERS

5720 Corporate Way, West Palm Beach, Florida 33407  
(561) 663-3113, fax 478-7248

**MIRASOL PARCELS H AND I**  
PART OF GOLF DIGEST P.C.D.  
SITUATE IN SECTION 3,  
TOWNSHIP 42 SOUTH, RANGE 42 EAST,  
CITY OF PALM BEACH GARDENS,  
PALM BEACH COUNTY, FLORIDA

S:\proj\10\palm\m\p\mirasol\mirasol.dwg 03/14/01 01:17:30 PM EST

REV: 03-14-01  
CAD FILE:  
TAYLOR\PAH\RPDS