

WINSTON TRAILS GOLF COURSE

PART OF WINSTON TRAILS P.U.D.
 SITUATE IN SECTIONS 2 AND 3, TOWNSHIP 45 SOUTH, RANGE 42 EAST
 PALM BEACH COUNTY, FLORIDA
 TOGETHER WITH A REPLAT OF PARCEL G
 WINSTON TRAILS PLAT ONE, PLAT BOOK 71, PAGES 28-32
 NOVEMBER, 2000 SHEET 6 OF 14

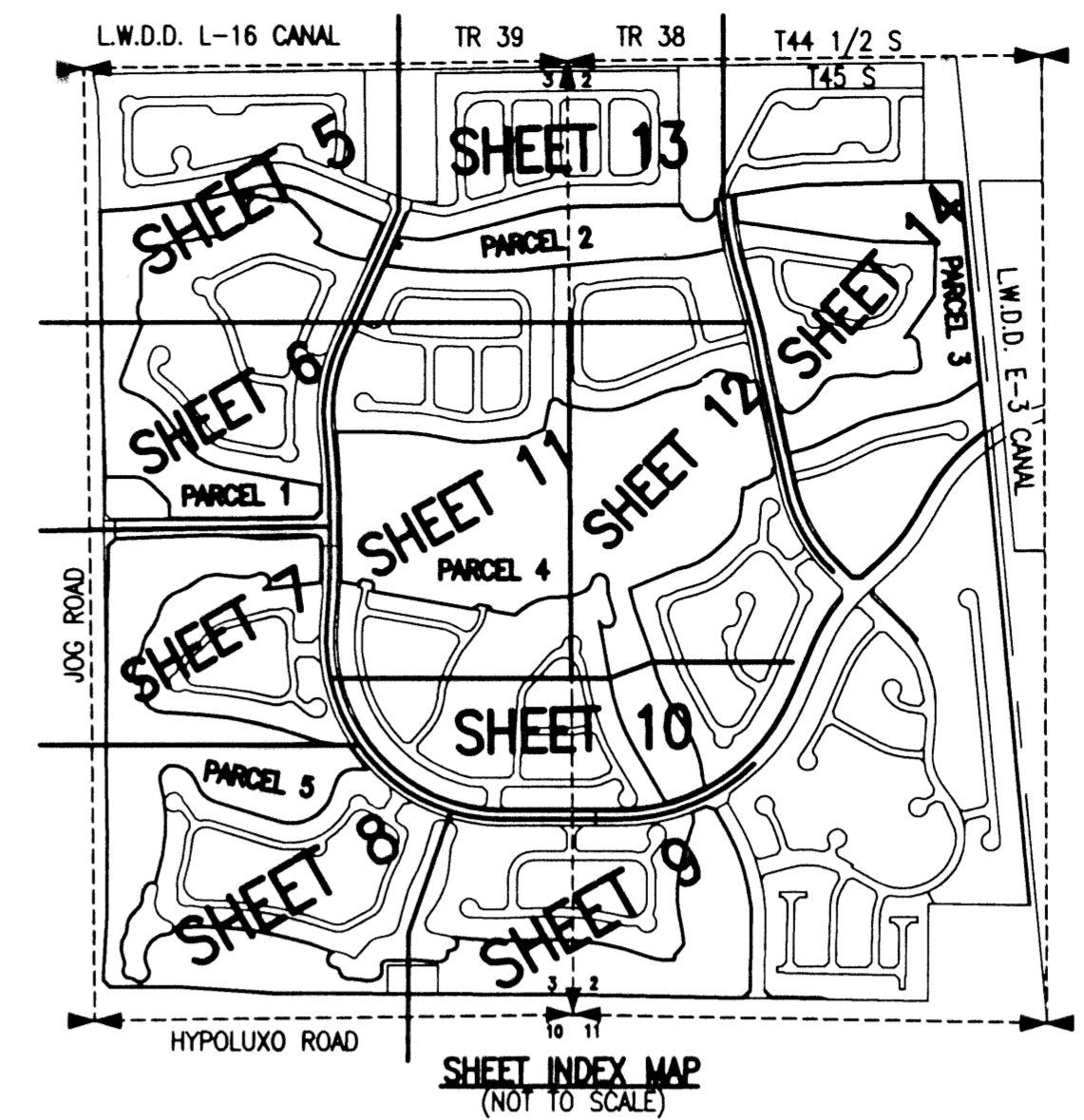
73

STATE OF FLORIDA
 COUNTY OF PALM BEACH

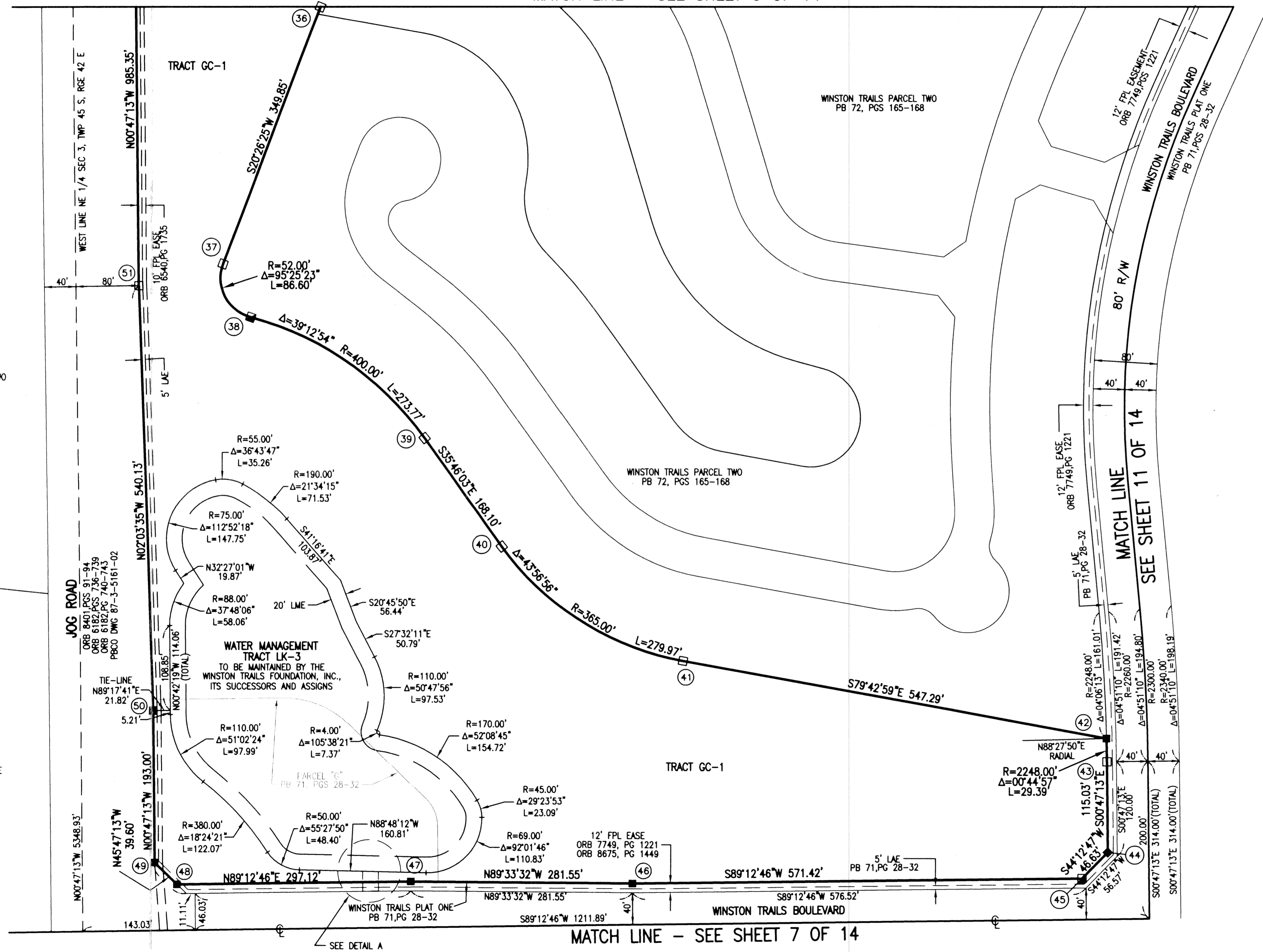
THIS PLAT WAS FILED FOR
 RECORD _____
 THIS _____ DAY OF _____
 AD, 2001 AND DULY RECORDED
 IN PLAT BOOK _____ ON PAGES _____
 AND _____

DOROTHY H. WILKEN, CLERK
 BY: _____, D.C.

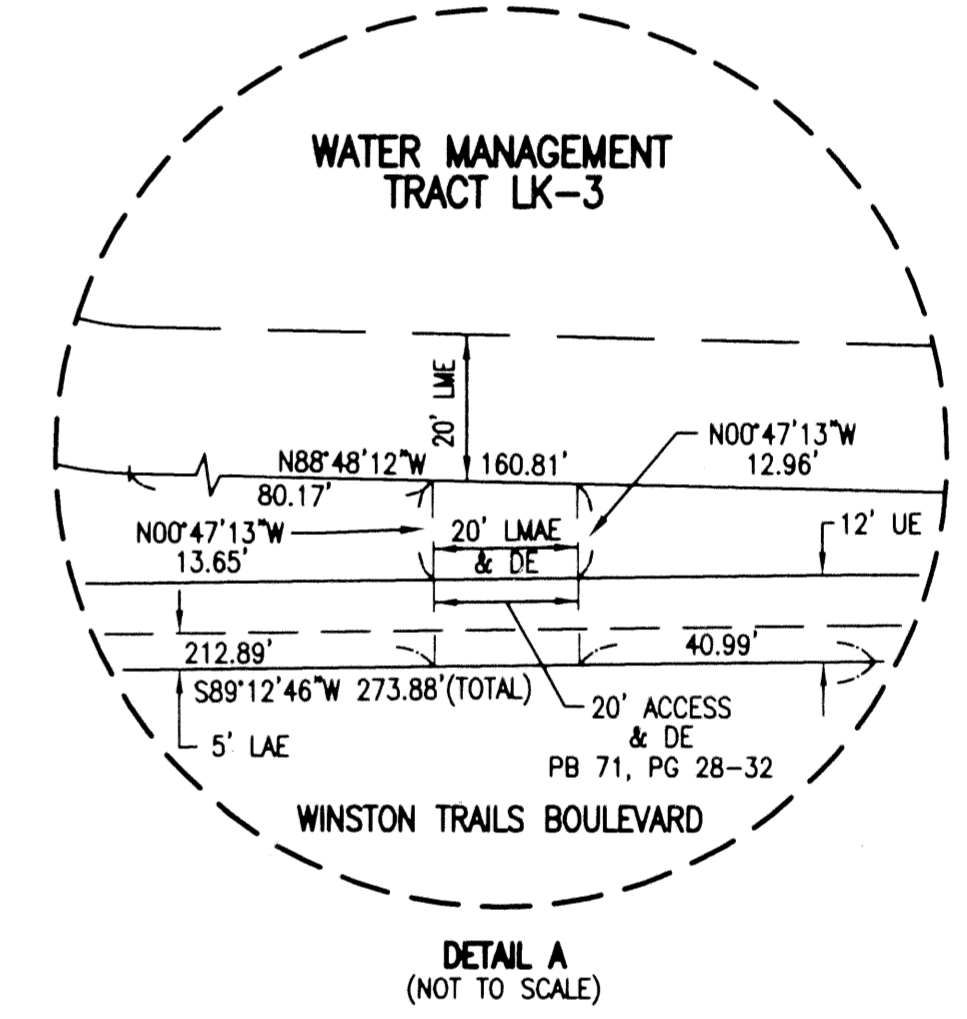
CIRCUIT COURT SEAL



MATCH LINE - SEE SHEET 5 OF 14



MONUMENT NUMBER	NORTHING	EASTING
36	818582.2045	935556.9432
37	818254.3648	935434.8106
38	818185.9857	935470.0722
39	818033.4770	935691.0061
40	817897.0951	935789.2793
41	817751.3324	936020.2989
42	817653.7051	936558.8110
43	817624.3227	936559.4108
44	817509.3039	936561.0068
45	817475.8791	936528.4970
46	817467.9482	935957.1320
47	817470.0764	935675.5901
48	817465.9526	935378.4887
49	817493.5628	935350.1115
50	817686.5442	935347.4337
51	818226.3225	935327.9452



- LEGEND:
- LWDD LAKE WORTH DRAINAGE DISTRICT
 - BE BUFFER EASEMENT
 - PBCO PALM BEACH COUNTY
 - R/W RIGHT-OF-WAY
 - PB PLAT BOOK
 - PG(S) PAGE(S)
 - SEC SECTION
 - TWP TOWNSHIP
 - RGE RANGE
 - CL, C CENTERLINE
 - FND FOUND
 - R RADIUS
 - Δ CENTRAL ANGLE
 - L ARC LENGTH
 - SB SOUTHERN BELL
 - FPL FLORIDA POWER & LIGHT
 - UE UTILITY EASEMENT
 - OE ORANGE EASEMENT
 - EASE EASEMENT
 - ORB OFFICIAL RECORD BOOK
 - LAE LIMITED ACCESS EASEMENT
 - LME LAKE MAINTENANCE EASEMENT
 - LMAE LAKE MAINTENANCE ACCESS EASEMENT
 - (D) DEED
 - (C) CALCULATED
 - (FND) PERMANENT REFERENCE MONUMENT (FND.)
 - 4" x 4" CONCRETE #4323
 - 4" x 4" CONCRETE #4763
 - 4" x 4" CONCRETE #4763
 - PERMANENT REFERENCE MONUMENT (SET)
 - 4" x 4" CONCRETE LB 048
 - PERMANENT REFERENCE MONUMENT NUMBER (SEE COORDINATE TABLE FOR VALUE)

SCALE:
 1" = 80'
 P.A. NO.:
 97016.03
 DATE:
 NOVEMBER, 2000
 DRAWING NO.
 45-42-02-75

MOCK ROOS
 ENGINEERS, SURVEYORS, PLANNERS

5720 Corporate Way, West Palm Beach, Florida 33407
 (561) 683-3113, fax 478-7248

WINSTON TRAILS GOLF COURSE

PART OF WINSTON TRAILS P.U.D.
 SITUATE IN SECTIONS 2 AND 3, TOWNSHIP 45 SOUTH
 RANGE 42 EAST
 PALM BEACH COUNTY, FLORIDA

SHEET 6 OF 14

WINSTON TRAILS GOLF COURSE
 PART OF 73
 MOCK ROOS ENGINEERS, SURVEYORS, PLANNERS
 5720 CORPORATE WAY, WEST PALM BEACH, FLORIDA 33407
 (561) 683-3113, FAX 478-7248
 03/02/01 09:58:28 AM EST
 K:\musa\musswtgc\wg\wgcrp03.dwg
 REV: 02-27-01
 CAD FILE:
 MUSSWTGC_WTCR03