

WINSTON TRAILS GOLF COURSE 75

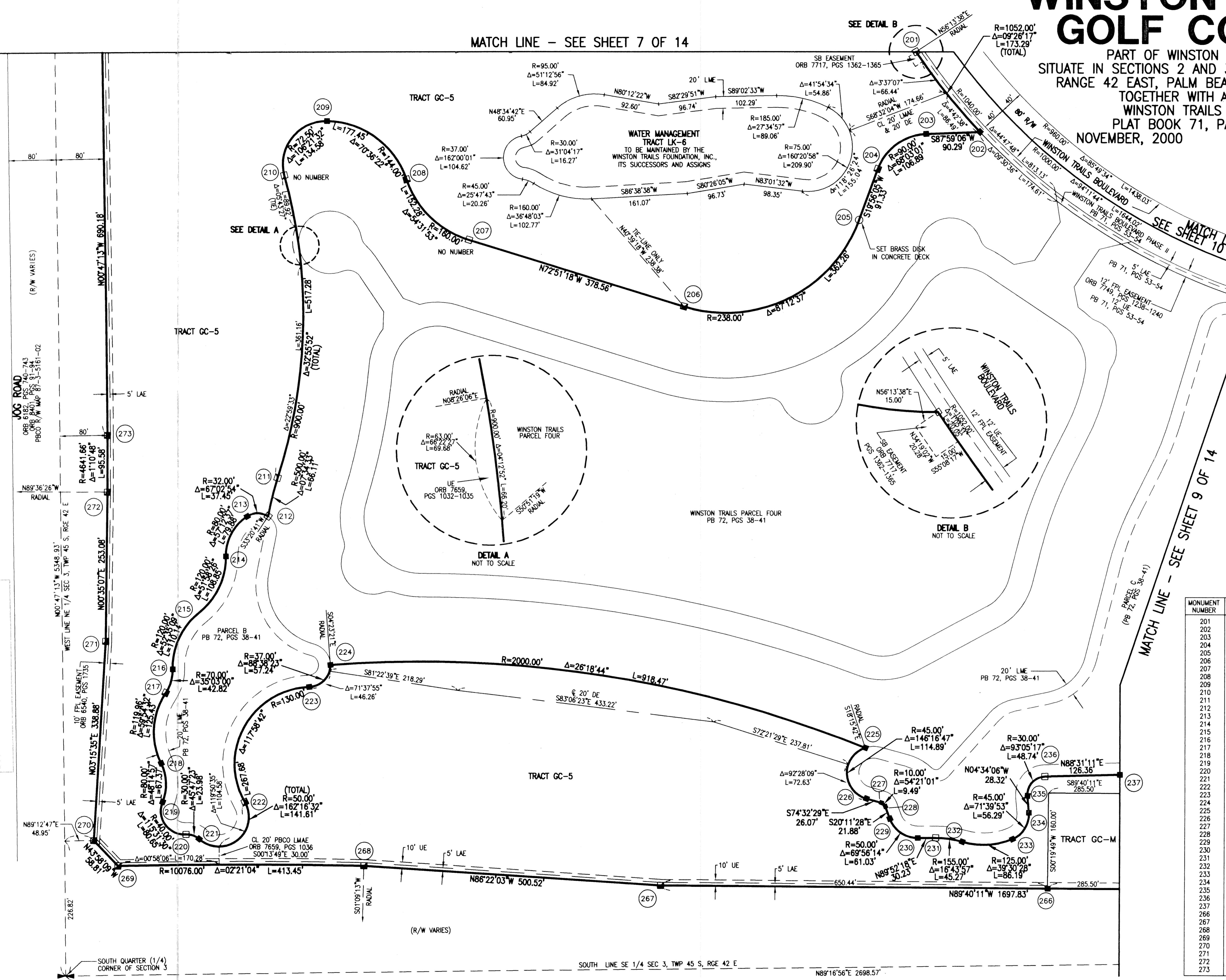
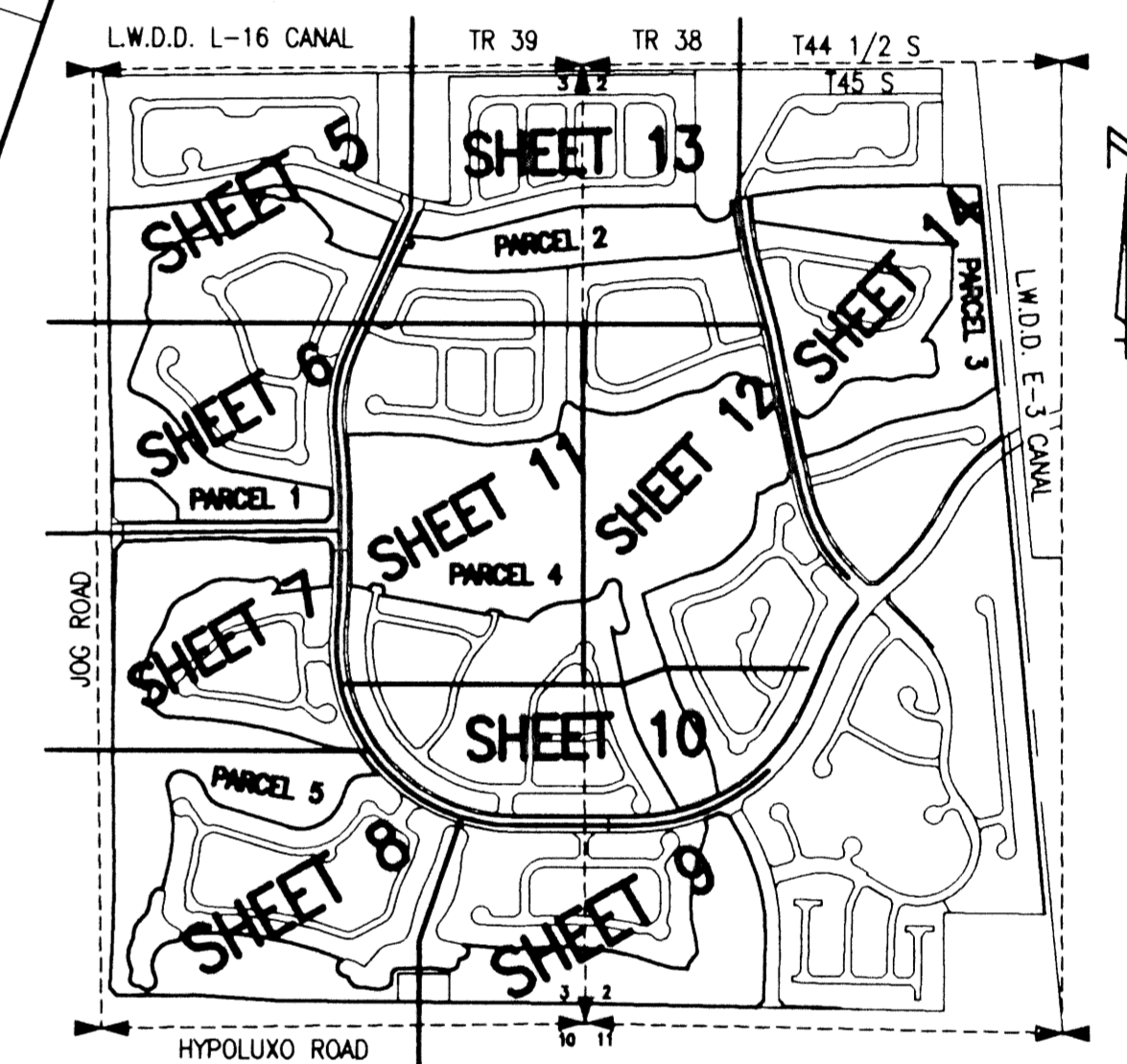
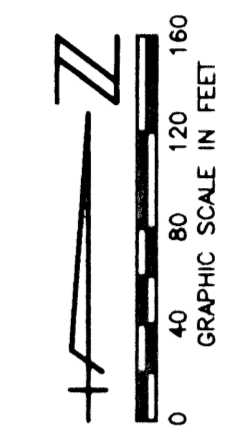
PART OF WINSTON TRAILS P.U.D.
SITUATE IN SECTIONS 2 AND 3, TOWNSHIP 45 SOUTH,
RANGE 42 EAST, PALM BEACH COUNTY, FLORIDA
TOGETHER WITH A REPEAT OF PARCEL G,
WINSTON TRAILS PLAT ONE,
PLAT BOOK 71, PAGES 28-32
NOVEMBER, 2000 SHEET 8 OF 14

STATE OF FLORIDA
COUNTY OF PALM BEACH
THIS PLAT WAS FILED FOR
RECORD _____ DAY OF _____
AD, 2001 AND DULY RECORDED
IN PLAT BOOK _____ ON PAGES
_____ AND _____
DOROTHY H. WILKEN, CLERK
BY: _____, D.C.

MATCH LINE - SEE SHEET 7 OF 14

MATCH LINE - SEE SHEET 10 OF 14

MATCH LINE - SEE SHEET 9 OF 14



MONUMENT NUMBER	NORTHING	EASTING
201	816203.7206	936722.3456
202	816068.2532	936930.1004
203	816065.0661	936739.8740
204	816005.7958	936658.4394
205	815919.9327	936627.3122
206	815773.6127	936333.4326
207	815885.1579	935971.6802
208	815987.7317	935866.9450
209	816086.4166	935732.9223
210	815994.8023	935661.6488
211	815454.7165	935651.2388
212	815420.5748	935635.4284
213	815420.4592	935600.0821
214	815352.6247	935564.4935
215	815257.3679	935519.9428
216	815160.8298	935475.4196
217	815120.3041	935463.8058
218	815000.7407	935456.3638
219	814935.3964	935458.9519
220	814880.5871	935498.6361
221	814872.9004	935520.6767
222	814935.1034	935597.4454
223	815130.3128	935704.9170
224	815167.8135	935740.5090
225	815029.1812	936640.3076
226	814943.0759	936642.4263
227	814936.1306	936667.5541
228	814929.9448	936674.2750
229	814909.4107	936681.8298
230	814876.6751	936728.8737
231	814876.7470	936759.1058
232	814870.2904	936803.7464
233	814874.9449	936888.1133
234	814919.9851	936915.4508
235	814948.2148	936913.1912
236	814980.5983	936942.3164
237	814983.8802	937088.6315
266	814792.7564	936947.7118
267	814796.4148	936997.3240
268	814828.0567	935797.8052
269	814827.8408	935384.3843
270	814870.1747	935343.5356
271	815208.6976	935362.7681
272	815461.7648	935365.3177
273	815557.3425	935364.9755

- SHEET INDEX MAP**
(NOT TO SCALE)
- LEGEND:**
- LWDD LAKE WORTH DRAINAGE DISTRICT
 - BE BUFFER EASEMENT
 - PBCO PALM BEACH COUNTY
 - R/W RIGHT-OF-WAY
 - PB PLAT BOOK
 - PG(S) PAGE(S)
 - SEC SECTION
 - TWP TOWNSHIP
 - ROE RANGE
 - CL, C CENTERLINE
 - FD FOUND
 - R RADIUS
 - CA CENTRAL ANGLE
 - L ARC LENGTH
 - SB SOUTHERN BELL
 - FPL FLORIDA POWER & LIGHT
 - DE DRAINAGE EASEMENT
 - EASE EASEMENT
 - ORB OFFICIAL RECORD BOOK
 - LAE LIMITED ACCESS EASEMENT
 - LMAE LAKE MAINTENANCE EASEMENT
 - (D) DEED
 - (C) CALCULATED
 - (FND) PERMANENT REFERENCE MONUMENT (FND.)
 - 4" X 4" CONCRETE #323
 - (FND) PERMANENT REFERENCE MONUMENT (FND.)
 - 4" X 4" CONCRETE #4763
 - (SET) PERMANENT REFERENCE MONUMENT (SET)
 - 4" X 4" CONCRETE LB 048
 - (2) PERMANENT REFERENCE MONUMENT NUMBER (SEE COORDINATE TABLE FOR VALUE)

REV.: 02-16-01
CAD FILE: MUSSWTGC\WTCRPO5

HYPOLUXO ROAD
PBCO R/W MAP 87-3-5161-01
ORB 6182, PGS 744-747

SCALE: 1" = 80'
P.A. NO.: 97018.01
DATE: NOVEMBER, 2000
DRAWING NO. 45-42-02-75

MOCK & ROOS
ENGINEERS • SURVEYORS • PLANNERS
5720 Corporate Way, West Palm Beach, Florida 33407
(561) 683-3113, fax 478-7248

WINSTON TRAILS GOLF COURSE
PART OF WINSTON TRAILS P.U.D.
SITUATE IN SECTIONS 2 AND 3, TOWNSHIP 45 SOUTH
PALM BEACH COUNTY, FLORIDA