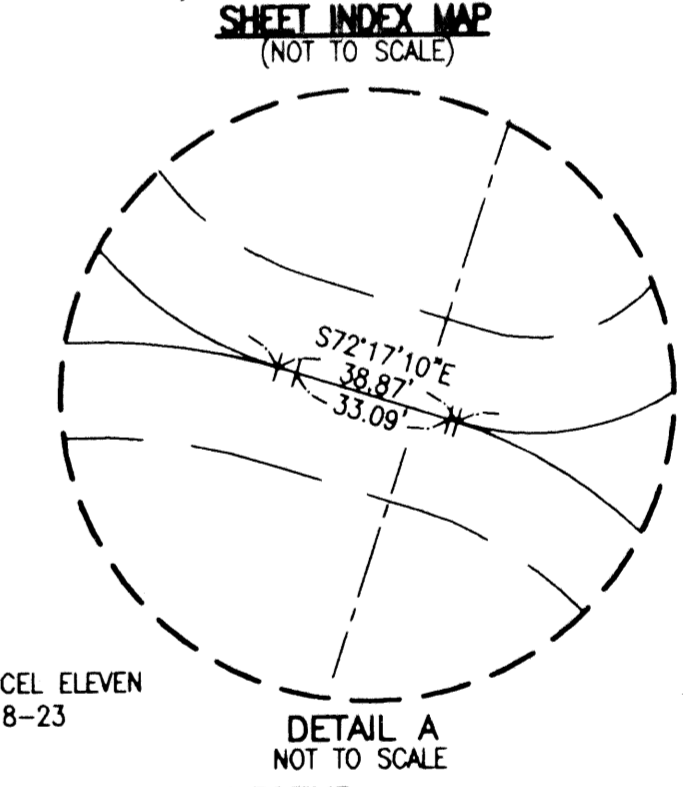
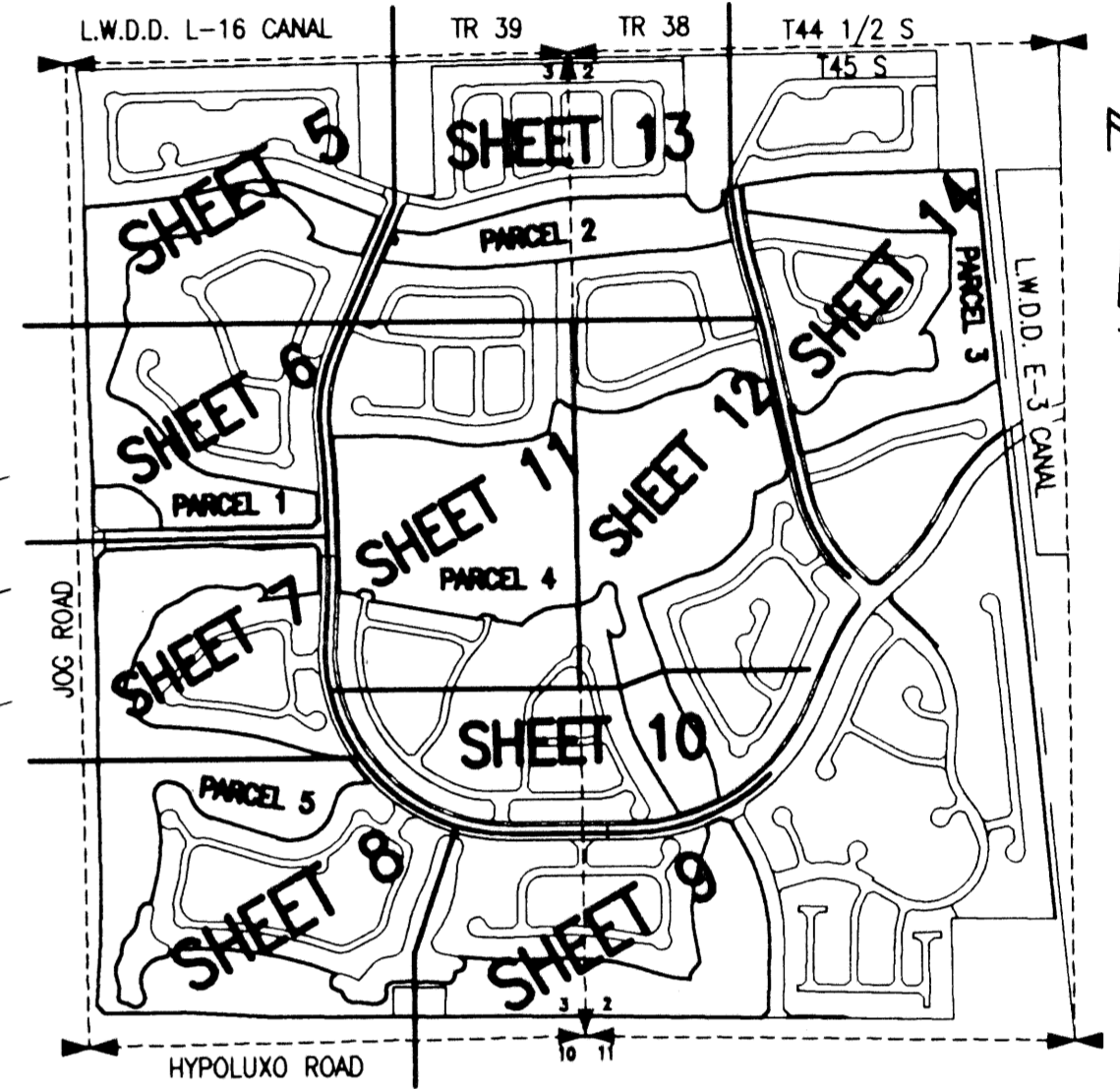
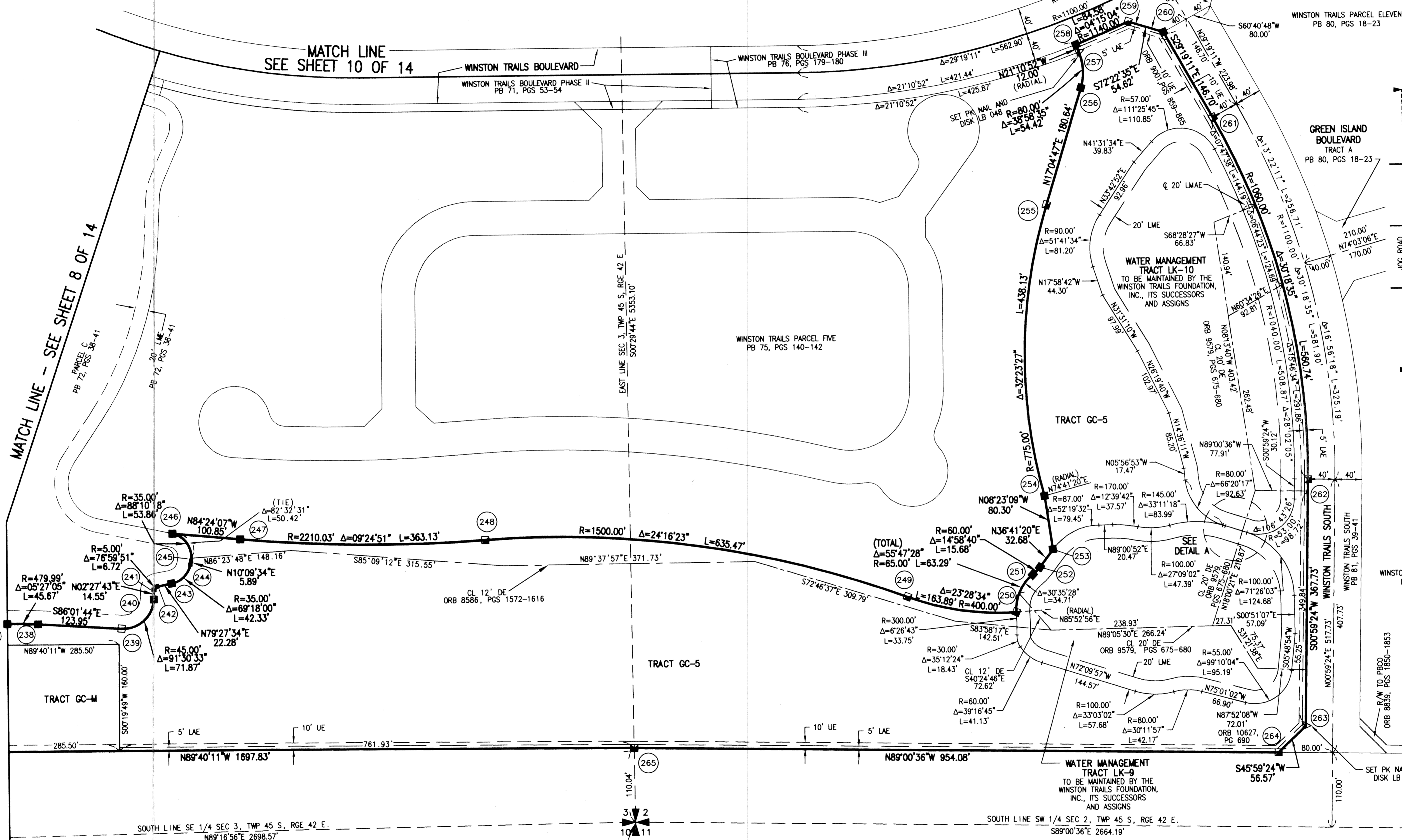


WINSTON TRAILS GOLF COURSE

PART OF WINSTON TRAILS P.U.D.
SITUATE IN SECTIONS 2 AND 3, TOWNSHIP 45 SOUTH, RANGE 42 EAST
PALM BEACH COUNTY, FLORIDA
TOGETHER WITH A REPLAT OF PARCEL G,
WINSTON TRAILS PLAT ONE, PLAT BOOK 71, PAGES 28-32
NOVEMBER, 2000 SHEET 9 OF 14

STATE OF FLORIDA
COUNTY OF PALM BEACH
THIS PLAT WAS FILED FOR
RECORD _____ DAY OF _____
AD, 2001 AND DULY RECORDED
IN PLAT BOOK _____ ON PAGES
_____ AND _____
DOROTHY H. WILKEN, CLERK
BY: _____, D.C.
CIRCUIT COURT SEAL



- LEGEND:**
- LWDD LAKE WORTH DRAINAGE DISTRICT
 - BE BUFFER EASEMENT
 - PBCO PALM BEACH COUNTY
 - R/W RIGHT-OF-WAY
 - PB PLAT BOOK
 - PG(S) PAGE(S)
 - SEC(S) SECTION
 - TWP TOWNSHIP
 - RANGE RANGE
 - CL CENTERLINE
 - FND FOUND
 - R RADIUS
 - Δ CENTRAL ANGLE
 - L ARC LENGTH
 - SB SOUTHERN BELL
 - FPL FLORIDA POWER & LIGHT
 - UE UTILITY EASEMENT
 - DE DRAINAGE EASEMENT
 - EASEMENT EASEMENT
 - ORB OFFICIAL RECORD BOOK
 - LAE LIMITED ACCESS EASEMENT
 - LME LAKE MAINTENANCE EASEMENT
 - LMAE LAKE MAINTENANCE ACCESS EASEMENT
 - (D) DEED
 - (C) CALCULATED
 - PERMANENT REFERENCE MONUMENT (FND.)
 - 4" x 4" CONCRETE #4323
 - PERMANENT REFERENCE MONUMENT (FND.)
 - 4" x 4" CONCRETE #4763
 - PERMANENT REFERENCE MONUMENT (SET)
 - 4" x 4" CONCRETE LB 048
 - PERMANENT REFERENCE MONUMENT NUMBER
 - (SEE COORDINATE TABLE FOR VALUE)

MONUMENT NUMBER	NORTHING	EASTING	MONUMENT NUMBER	NORTHING	EASTING
237	814983.8802	937068.6315	252	815050.6981	938597.9211
238	814982.8943	937114.2721	253	815076.9066	938617.4427
239	814974.3277	937237.9259	254	815156.3464	938605.7208
240	815017.2933	937285.9948	255	815588.6130	938612.3324
241	815031.8300	937286.6177	256	815761.2937	938665.3625
242	815036.5314	937290.6978	257	815814.6243	938663.1119
243	815040.6102	937312.6011	258	815825.8130	938658.7746
244	815068.8499	937340.6458	259	815859.2819	938736.4348
245	815074.6477	937341.6839	260	815842.7532	938788.4911
246	815115.0544	937314.4966	261	815714.8595	938860.3431
247	815105.2306	937414.8670	262	815177.5021	938996.0453
248	815099.6429	937777.5417	263	814809.8268	938989.7438
249	815008.4610	938401.6440	264	814770.5181	938949.0642
250	814983.8132	938562.5148	265	814786.8676	937995.1272
251	815039.4798	938587.0233			

HYPOLUXO ROAD
PBCO R/W MAP 87-3-5161-01
ORB 6182, PGS 744-747
(R/W VARIES)

SCALE:
1" = 80'
P.A. NO.:
97016.01
DATE:
NOVEMBER, 2000
DRAWING NO.:
45-42-02-75

MOCK • ROOS
ENGINEERS • SURVEYORS • PLANNERS
7220 Corporate Way, West Palm Beach, Florida 33407
(561) 683-3113, fax 478-7248

WINSTON TRAILS GOLF COURSE
PART OF WINSTON TRAILS P.U.D.
SITUATE IN SECTIONS 2 AND 3, TOWNSHIP 45 SOUTH
RANGE 42 EAST
PALM BEACH COUNTY, FLORIDA

REV.: 02-14-01
CAD FILE: MUSSWTGC\WTGCRP06