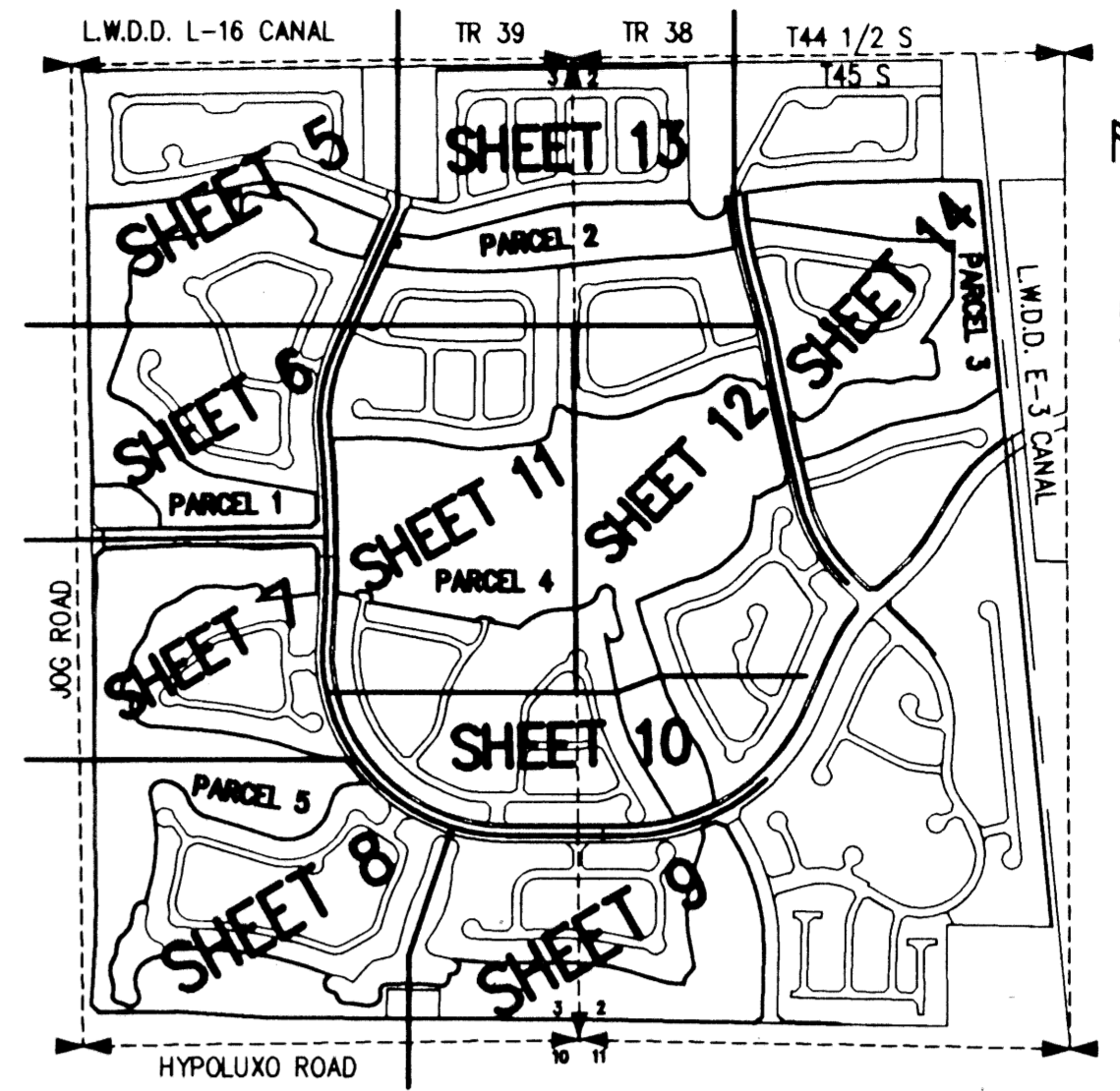
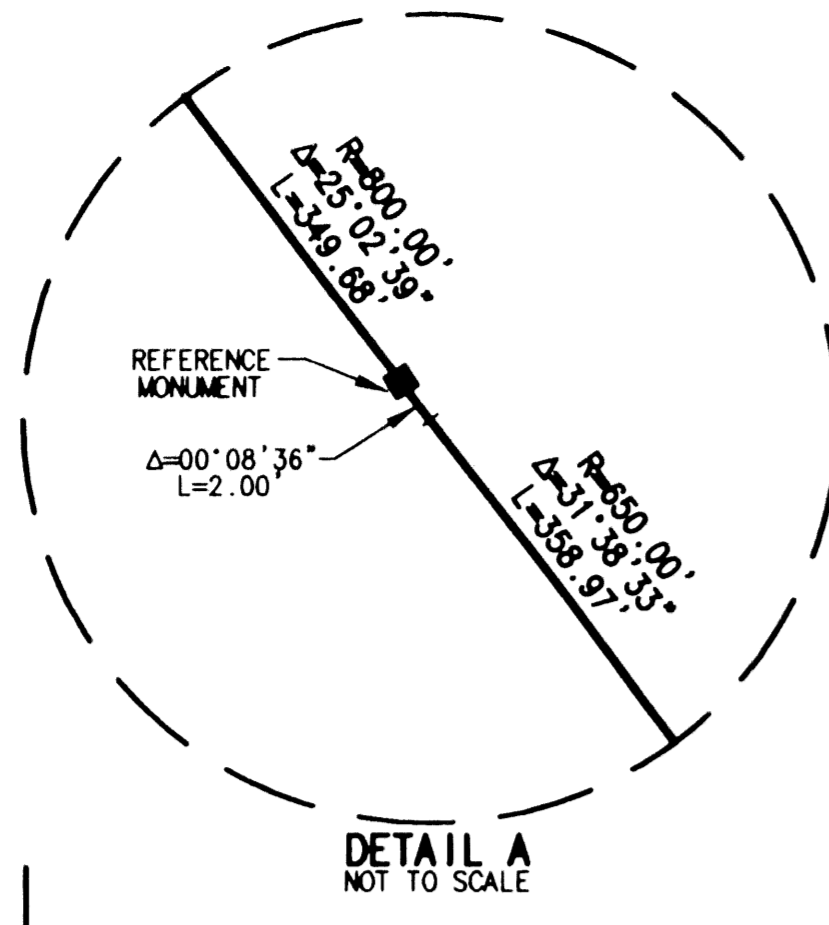


WINSTON TRAILS GOLF COURSE

PART OF WINSTON TRAILS P.U.D.
 SITUATE IN SECTIONS 2 AND 3, TOWNSHIP 45 SOUTH, RANGE 42 EAST
 PALM BEACH COUNTY, FLORIDA
 TOGETHER WITH A REPLAT OF PARCEL 'G',
 WINSTON TRAILS PLAT ONE, PLAT BOOK 71, PAGES 28-32
 NOVEMBER, 2000 SHEET 10 OF 14



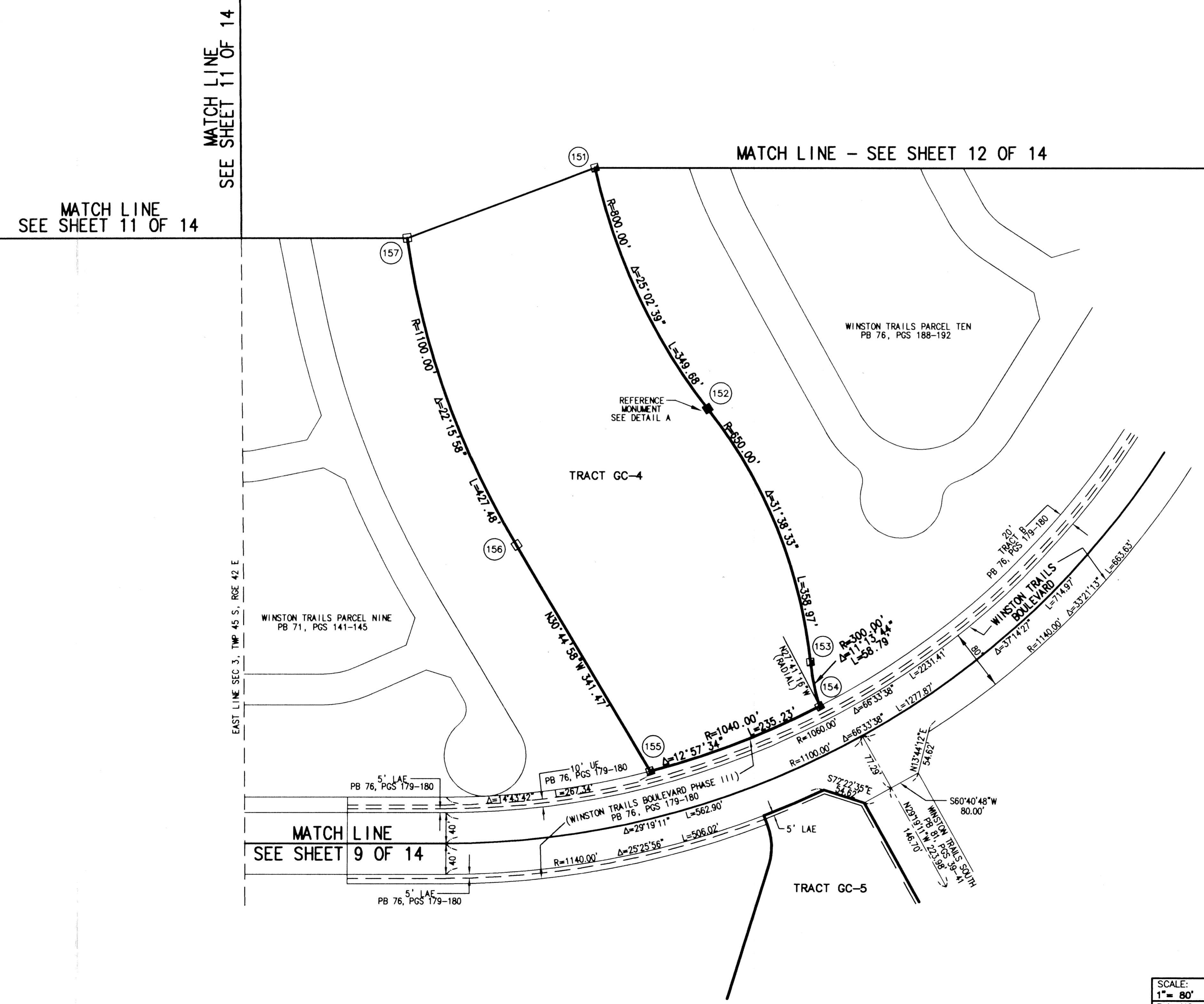
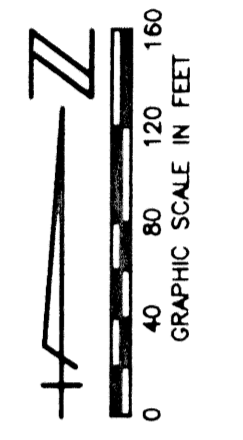
77

STATE OF FLORIDA
 COUNTY OF PALM BEACH

THIS PLAT WAS FILED FOR
 RECORD _____ DAY OF _____
 AD, 2001 AND DULY RECORDED
 IN PLAT BOOK _____ ON PAGES
 _____ AND _____

DOROTHY H. WILKEN, CLERK
 BY: _____, D.C.

CIRCUIT COURT SEAL



MONUMENT NUMBER	NORTHING	EASTING
151	816667.5311	938436.8928
152	816355.5193	938583.9984
153	816025.3531	938718.0810
154	815967.8958	938730.0930
155	815882.9495	938511.2707
156	816176.3882	938336.6412
157	816576.5076	938193.9730

- LEGEND:**
- LWDD LAKE WORTH DRAINAGE DISTRICT
 - BE BUFFER EASEMENT
 - PBCO PALM BEACH COUNTY
 - R/W RIGHT-OF-WAY
 - PB PLAT BOOK
 - PG(S) PAGE(S)
 - SEC SECTION
 - TWP TOWNSHIP
 - RGE RANGE
 - CL, C CENTERLINE
 - FND FOUND
 - R RADIUS
 - Δ CENTRAL ANGLE
 - L ARC LENGTH
 - SB SOUTHERN BELL
 - FPL FLORIDA POWER & LIGHT
 - UE UTILITY EASEMENT
 - DE DRAINAGE EASEMENT
 - EASE EASEMENT
 - ORB OFFICIAL RECORD BOOK
 - LAE LIMITED ACCESS EASEMENT
 - LME LAKE MAINTENANCE EASEMENT
 - LMAE LAKE MAINTENANCE ACCESS EASEMENT
 - DEED DEED
 - (C) CALCULATED
 - PERMANENT REFERENCE MONUMENT (FND.)
 - 4" X 4" CONCRETE #4323
 - PERMANENT REFERENCE MONUMENT (FND.)
 - 4" X 4" CONCRETE #4763
 - PERMANENT REFERENCE MONUMENT (SET)
 - 4" X 4" CONCRETE LB 048
 - ② PERMANENT REFERENCE MONUMENT NUMBER (SEE COORDINATE TABLE FOR VALUE)

WINSTON TRAILS Golf Course
 PAGE 77
 RECORD NUMBER 1758
 ZONING: R15E
 ZAP CODE 35463
 87th
 486
 END NAME

K:\UTILES\YOUSSEF\GOLF\WTCGRP07.dwg 02/05/01 08:58:35 AM EST

REV.: 02-01-01
 CAD FILE:
 MUSSWTCG\WTCGRP07

SCALE:
 1" = 80'
 P.A. NO.:
 97016.01
 DATE:
 NOVEMBER, 2000
 DRAWING NO.
 45-42-02-75

MOCK • ROOS
 ENGINEERS • SURVEYORS • PLANNERS
 5720 Corporate Way, West Palm Beach, Florida 33407
 (561) 683-3113, fax 478-7248

WINSTON TRAILS GOLF COURSE
 PART OF WINSTON TRAILS P.U.D.
 SITUATE IN SECTIONS 2 AND 3, TOWNSHIP 45 SOUTH
 RANGE 42 EAST
 PALM BEACH COUNTY, FLORIDA