

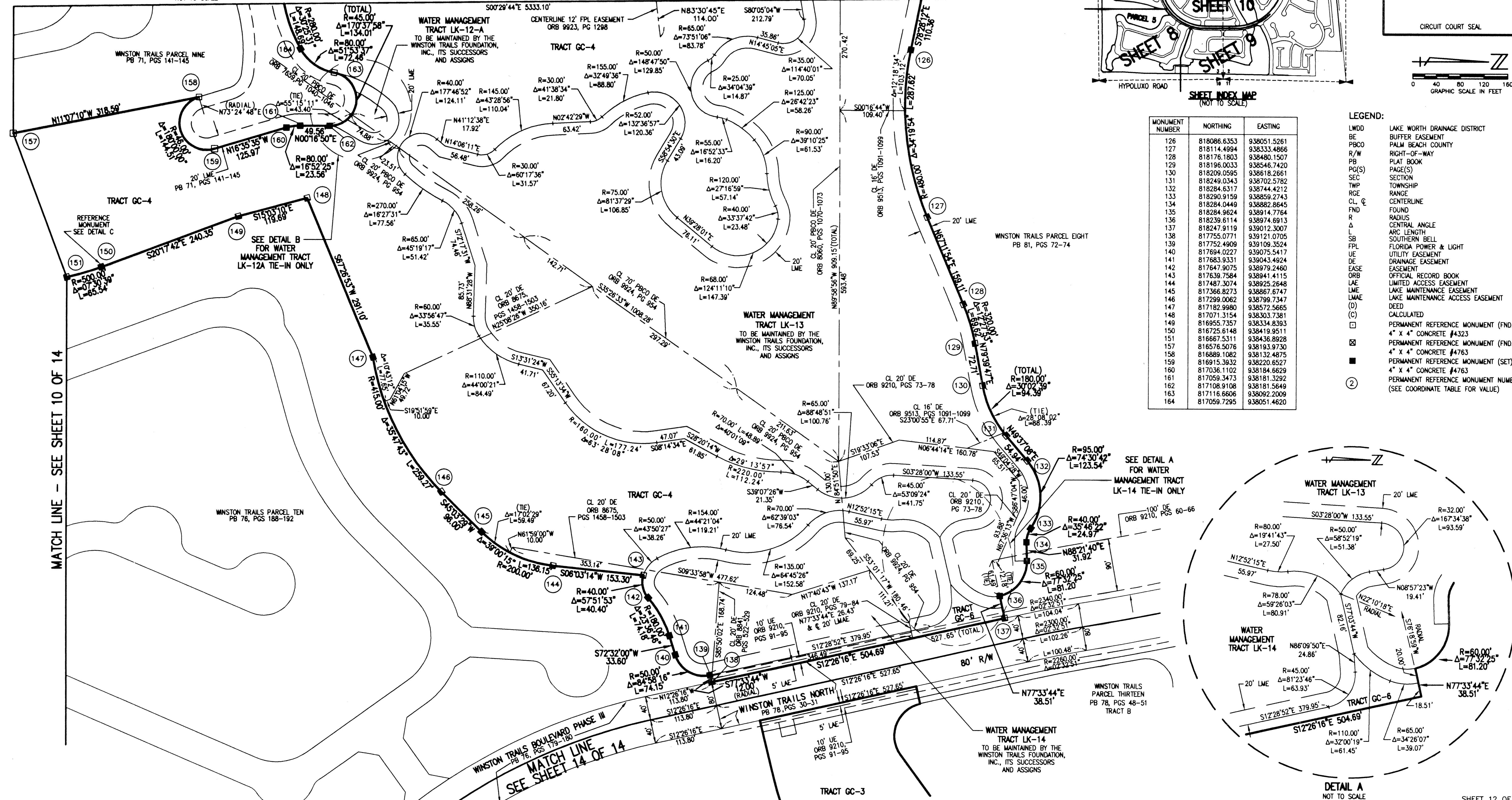
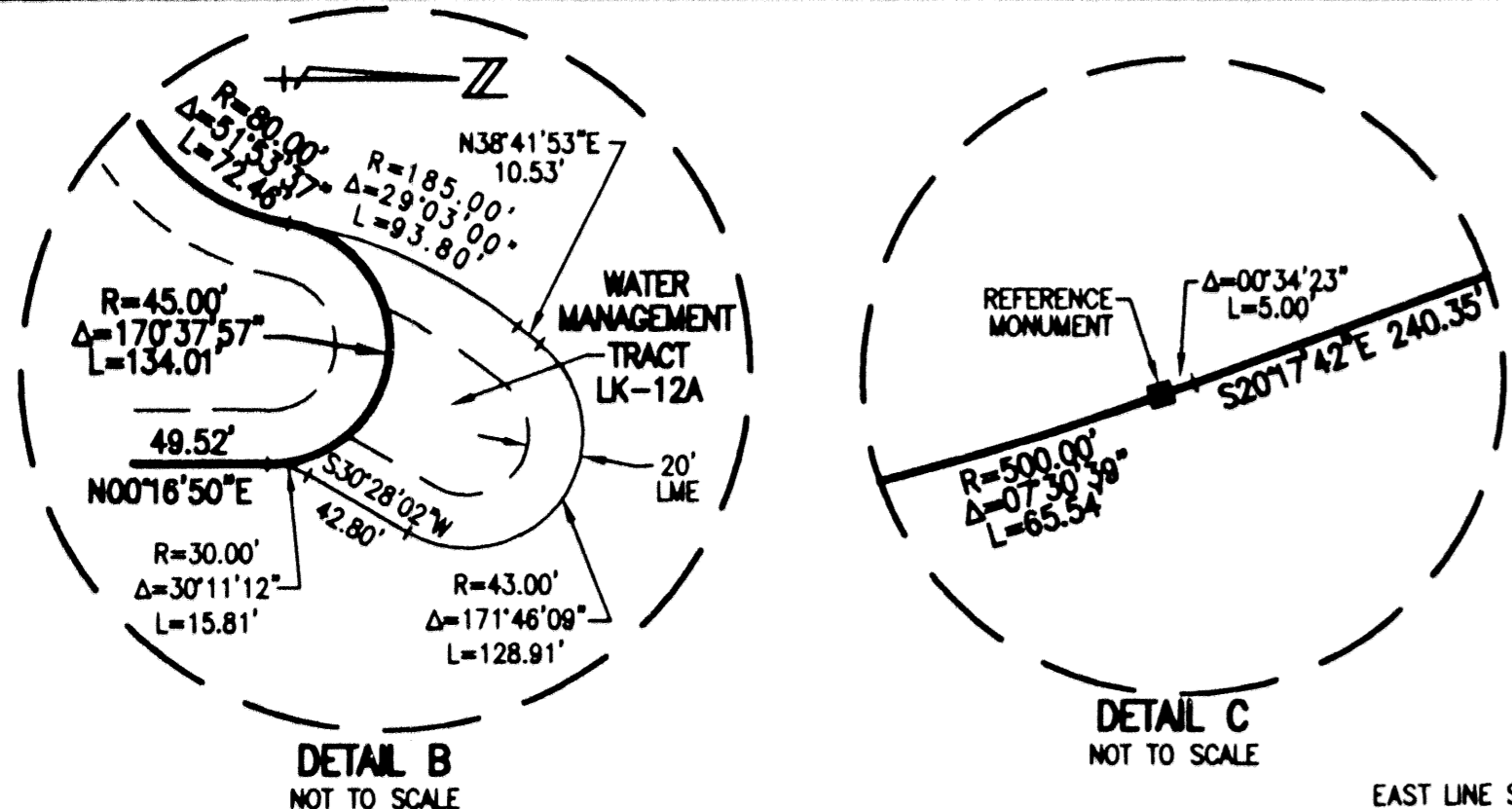
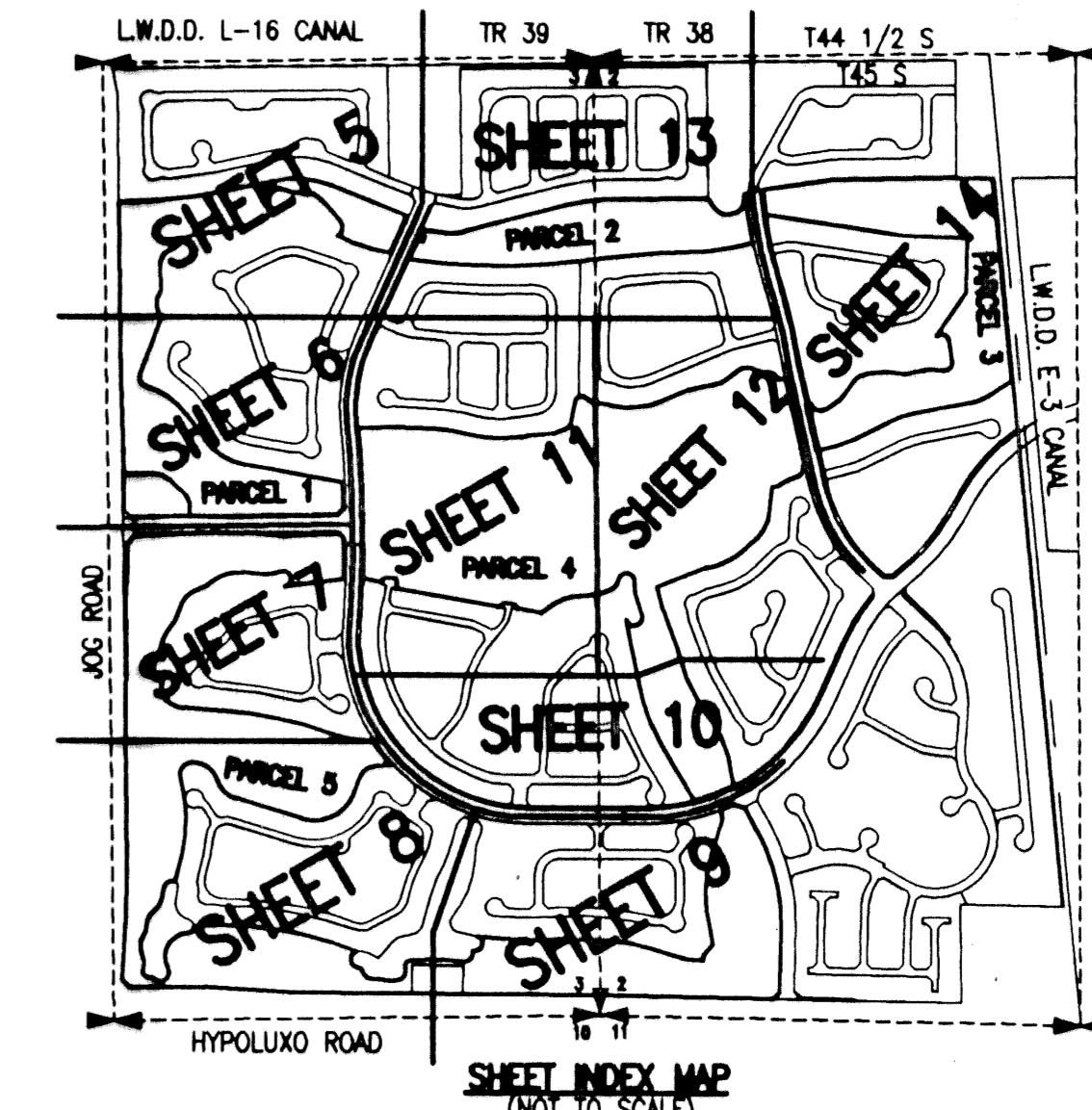
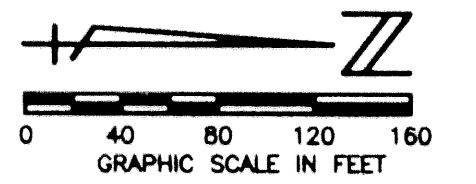
# WINSTON TRAILS GOLF COURSE

PART OF WINSTON TRAILS P.U.D.  
 SITUATE IN SECTIONS 2 AND 3, TOWNSHIP 45 SOUTH, RANGE 42 EAST  
 PALM BEACH COUNTY, FLORIDA  
 TOGETHER WITH A REPLAT OF PARCEL 'G',  
 WINSTON TRAILS PLAT ONE, PLAT BOOK 71, PAGES 28-32  
 NOVEMBER, 2000 SHEET 12 OF 14

# 79

STATE OF FLORIDA  
 COUNTY OF PALM BEACH  
 THIS PLAT WAS FILED FOR  
 RECORD \_\_\_\_\_ DAY OF \_\_\_\_\_  
 AD, 2001 AND DULY RECORDED  
 IN PLAT BOOK \_\_\_\_\_ ON PAGES  
 \_\_\_\_\_ AND \_\_\_\_\_  
 DOROTHY H. WILKEN, CLERK  
 BY: \_\_\_\_\_, D.C.

CIRCUIT COURT SEAL



MONUMENT NUMBER	NORTHING	EASTING
126	818086.6353	938051.5261
127	818114.4994	938333.4866
128	818176.1803	938480.1507
129	818196.0033	938546.7420
130	818209.0595	938618.2661
131	818249.0343	938702.5782
132	818284.6317	938744.4212
133	818290.9159	938859.2743
134	818284.0449	938882.8645
135	818284.9624	938914.7764
136	818239.6114	938974.6913
137	818247.9119	939012.3007
138	817755.0771	939121.0705
139	817752.4909	939109.3524
140	817684.0227	939075.5417
141	817683.9331	939043.4924
142	817647.9075	938979.2460
143	817639.7584	938941.4115
144	817487.3074	938925.2648
145	817366.8273	938867.6747
146	817299.0062	938799.7347
147	817182.9980	938572.5665
148	817071.3154	938303.7381
149	816955.7357	938334.8393
150	816725.6148	938419.9511
151	816667.5311	938436.8928
152	816576.5076	938193.9730
153	816889.1082	938132.4875
154	816915.3932	938220.6527
155	817036.1102	938184.6629
156	817059.3473	938181.3292
157	817108.9108	938181.5649
158	817116.6606	938092.2009
159	817059.7295	938051.4620

- LEGEND:**
- LWDD LAKE WORTH DRAINAGE DISTRICT
  - BE BUFFER EASEMENT
  - PB/CO PALM BEACH COUNTY
  - R/W RIGHT-OF-WAY
  - PB PLAT BOOK
  - PG(S) PAGE(S)
  - SEC SECTION
  - TWP TOWNSHIP
  - RGE RANGE
  - CL, C CENTERLINE
  - FND FOUND
  - R RADIUS
  - Δ CENTRAL ANGLE
  - L ARC LENGTH
  - SPB SOUTHERN BELL
  - FPL FLORIDA POWER & LIGHT
  - UE UTILITY EASEMENT
  - DE DRAINAGE EASEMENT
  - EASE EASEMENT
  - ORB OFFICIAL RECORD BOOK
  - LAE LAKE ACCESS EASEMENT
  - LME LAKE MAINTENANCE EASEMENT
  - LMAE LAKE MAINTENANCE ACCESS EASEMENT
  - (D) DEED
  - (C) CALCULATED
  - PERMANENT REFERENCE MONUMENT (FND.)
  - 4" X 4" CONCRETE #4323
  - PERMANENT REFERENCE MONUMENT (FND.)
  - 4" X 4" CONCRETE #4763
  - PERMANENT REFERENCE MONUMENT (SET)
  - 4" X 4" CONCRETE #4763
  - PERMANENT REFERENCE MONUMENT NUMBER
  - (SEE COORDINATE TABLE FOR VALUE)

**MOCK ROOS**  
 ENGINEERS SURVEYORS PLANNERS  
 5720 Corporate Way, West Palm Beach, Florida 33407  
 (561) 683-3113, fax 478-7248

**WINSTON TRAILS GOLF COURSE**  
 PART OF WINSTON TRAILS P.U.D.  
 SITUATE IN SECTIONS 2 AND 3, TOWNSHIP 45 SOUTH  
 RANGE 42 EAST  
 PALM BEACH COUNTY, FLORIDA

REV.: 02-12-01  
 CAD FILE: MUSSWTGC\WTCGRP08

SCALE: 1" = 80'  
 P.A. NO.: 97016.03  
 DATE: NOVEMBER, 2000  
 DRAWING NO. 45-42-02-75

SHEET 12 OF 14