

MIRASOL PARCEL F

PART OF GOLF DIGEST P.C.D.
SECTION 3, TOWNSHIP 42 SOUTH, RANGE 42 EAST,
CITY OF PALM BEACH GARDENS,
PALM BEACH COUNTY, FLORIDA
SHEET 3 OF 5

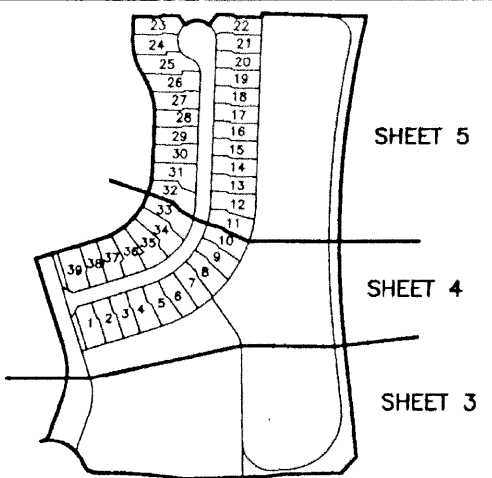
99

STATE OF FLORIDA
COUNTY OF PALM BEACH

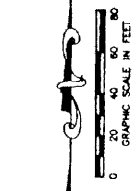
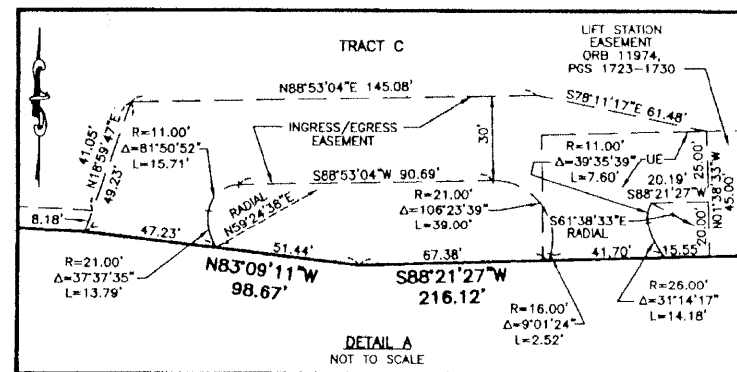
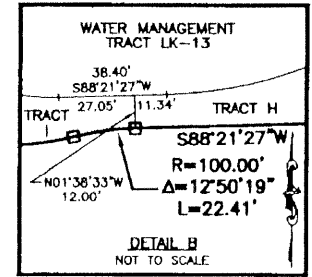
THIS PLAT WAS FILED FOR RECORD
THIS _____ DAY OF _____
AD, 2001, AND DULY RECORDED
IN PLAT BOOK _____ ON PAGES
_____ AND _____

DOROTHY H. WILKEN, CLERK
BY: _____, D.C.

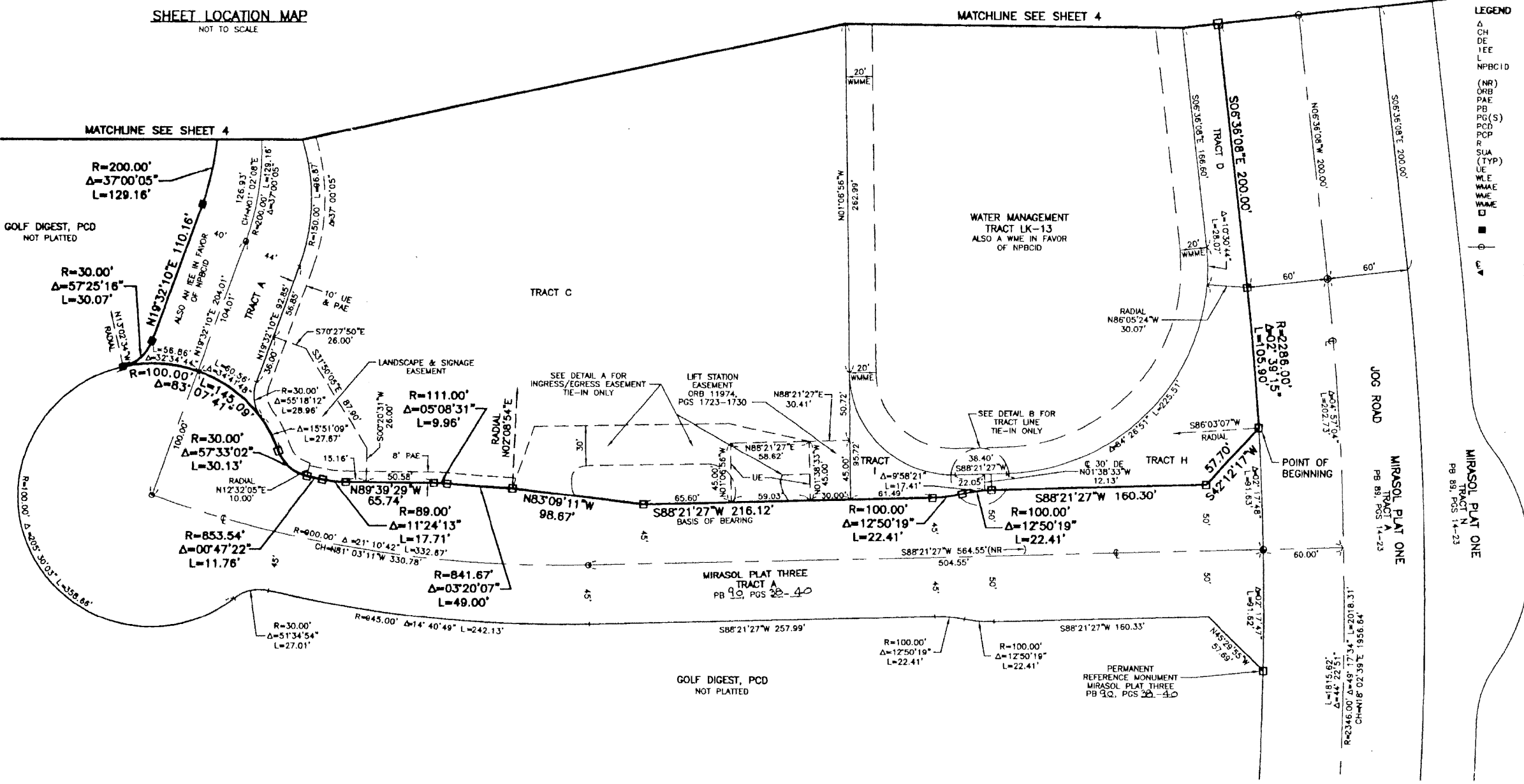
CIRCUIT COURT SEAL



SHEET LOCATION MAP
NOT TO SCALE



- LEGEND**
- Δ CENTRAL (DELTA) ANGLE
 - CH CHORD
 - DE DRAINAGE EASEMENT
 - IEE INGRESS-EGRESS EASEMENT
 - L ARC LENGTH
 - NPBCID NORTHERN PALM BEACH COUNTY IMPROVEMENT DISTRICT
 - (NR) NON-RADIAL
 - ORB OFFICIAL RECORD BOOK
 - PAE PEDESTRIAN ACCESS EASEMENT
 - PB PLAT BOOK
 - PG(S) PAGE(S)
 - PCD PLANNED COMMUNITY DEVELOPMENT
 - PCP PERMANENT CONTROL POINT
 - R RADIUS
 - SUA SEACOAST UTILITY AUTHORITY
 - (TYP) TYPICAL
 - UE UTILITY EASEMENT
 - WLE WATER LINE EASEMENT
 - WMAE WATER MANAGEMENT ACCESS EASEMENT
 - WME WATER MANAGEMENT EASEMENT
 - WMAE WATER MANAGEMENT MAINTENANCE EASEMENT
 - PERMANENT REFERENCE MONUMENT FOUND LB 048 (4" x 4" CONCRETE)
 - PERMANENT REFERENCE MONUMENT SET LB 048 (4" x 4" CONCRETE)
 - PERMANENT CONTROL POINT SET LB 048
 - CENTERLINE
 - ZERO LOT LINE INDICATOR



THIS INSTRUMENT WAS PREPARED BY MARY HANNA CLODFELTER, P.S.M. IN THE OFFICES OF MOCK, ROOS & ASSOCIATES, INC., 5720 CORPORATE WAY, WEST PALM BEACH, FLORIDA 33407.

SHEET 3 OF 5

REV: 02-27-01
CAD FILE:
TAYLPA_F\PA_FRP02

SCALE: 1"=40'	FLORIDA L.B. NO. 48
P.A. NO.: 99321.00	MOCK • ROOS ENGINEERS • SURVEYORS • PLANNERS 5720 Corporate Way, West Palm Beach, Florida 33407 (561) 683-3113, fax 478-7248
DATE: SEPTEMBER 2000	
DRAWING NO.: 42-42-03-35	

MIRASOL PARCEL F
PART OF GOLF DIGEST P.C.D.
SITUATE IN SECTION 3,
TOWNSHIP 42 SOUTH, RANGE 42 EAST,
CITY OF PALM BEACH GARDENS,
PALM BEACH COUNTY, FLORIDA