

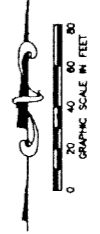
MIRASOL PARCEL F

PART OF GOLF DIGEST P.C.D.
SECTION 3, TOWNSHIP 42 SOUTH, RANGE 42 EAST,
CITY OF PALM BEACH GARDENS,
PALM BEACH COUNTY, FLORIDA
SHEET 5 OF 5

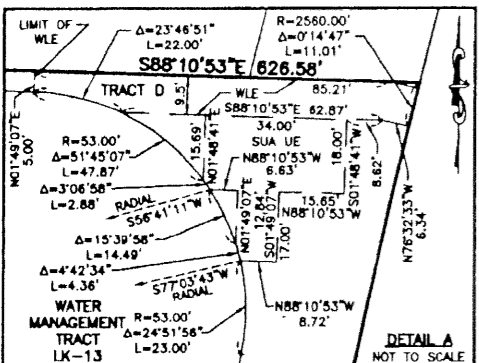
101

STATE OF FLORIDA
COUNTY OF PALM BEACH
THIS PLAT WAS FILED FOR
RECORD _____ DAY OF _____
AD, 2001 AND DULY RECORDED
IN PLAT BOOK _____ AND _____ ON PAGES
_____ AND _____
DOROTHY H. WILKEN, CLERK
BY: _____, D.C.

- LEGEND**
- Δ CENTRAL (DELTA) ANGLE
 - CH CHORD
 - DE DRAINAGE EASEMENT
 - IEE INGRESS-EGRESS EASEMENT
 - L ARC LENGTH
 - NPBC10 NORTHERN PALM BEACH COUNTY IMPROVEMENT DISTRICT
 - (NR) NON-RADIAL
 - ORB OFFICIAL RECORD BOOK
 - PAE PEDESTRIAN ACCESS EASEMENT
 - PB PLAT BOOK
 - PG(S) PAGE(S)
 - PCD PLANNED COMMUNITY DEVELOPMENT
 - PCP PERMANENT CONTROL POINT
 - R RADIUS
 - SUA SEACOAST UTILITY AUTHORITY TYPICAL
 - UE UTILITY EASEMENT
 - WLE WATER LINE EASEMENT
 - WMAE WATER MANAGEMENT ACCESS EASEMENT
 - WME WATER MANAGEMENT EASEMENT
 - WMAE WATER MANAGEMENT MAINTENANCE EASEMENT
 - PERMANENT REFERENCE MONUMENT FOUND LB 048 (4"x4" CONCRETE)
 - PERMANENT REFERENCE MONUMENT SET LB 048 (4"x4" CONCRETE)
 - PCP PERMANENT CONTROL POINT
 - SET LB 048 CENTERLINE
 - ZERO LOT LINE INDICATOR



CIRCUIT COURT SEAL

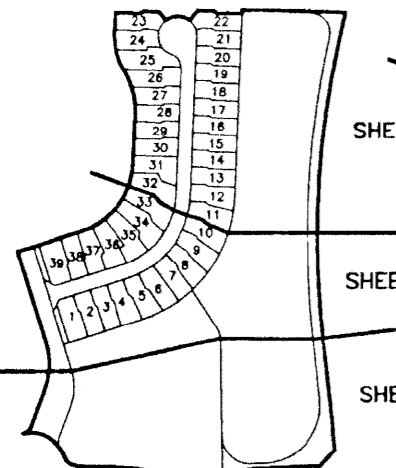


GOLF DIGEST, PCD
NOT PLATTED

WATER MANAGEMENT
TRACT LK-13
ALSO A WME IN FAVOR
OF NPBCID

MIRASOL PLAT ONE
WATER MANAGEMENT
TRACT LK-20
PB 89, PGS 14-23

FLORIDA'S TURNPIKE
DB 1119, PG 673
SB 91, PG 688
RPB 21, PG 861881



SHEET LOCATION MAP
NOT TO SCALE

MATCHLINE SEE SHEET 4

THIS INSTRUMENT WAS PREPARED BY MARY HANNA CLODFELTER, P.S.M. IN
THE OFFICES OF MOCK, ROOS & ASSOCIATES, INC., 5720 CORPORATE WAY,
WEST PALM BEACH, FLORIDA 33407.

SCALE: 1"=40'	FLORIDA L.B. NO. 48
P.A. NO.: 99321.00	MOCK ROOS ENGINEERS, SURVEYORS & PLANNERS
DATE: SEPTEMBER 2000	
DRAWING NO.: 42-42-03-35	
5720 Corporate Way, West Palm Beach, Florida 33407 (561) 883-3113, fax 478-7248	

MIRASOL PARCEL F
PART OF GOLF DIGEST P.C.D.
SITUATE IN SECTION 3,
TOWNSHIP 42 SOUTH, RANGE 42 EAST,
CITY OF PALM BEACH GARDENS,
PALM BEACH COUNTY, FLORIDA

SHEET 5 OF 5