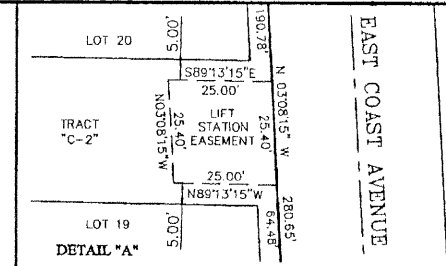


LYMAN VILLAGE
 BEING A REPLAT OF LOTS 1 THROUGH 49 OF BLOCK 17 OF PLAT OF "GREYNOLDS HIGHLAND", UNIT NO. 1
 AS RECORDED IN PLAT BOOK 13, PAGE 25 OF THE PUBLIC RECORDS OF PALM BEACH COUNTY, FLORIDA.
 LYING IN SECTION 3, TOWNSHIP 45 SOUTH, RANGE 43 EAST
 TOWN OF LANTANA PALM BEACH COUNTY, FLORIDA
 SHEET 2 OF 3 APRIL, 2001

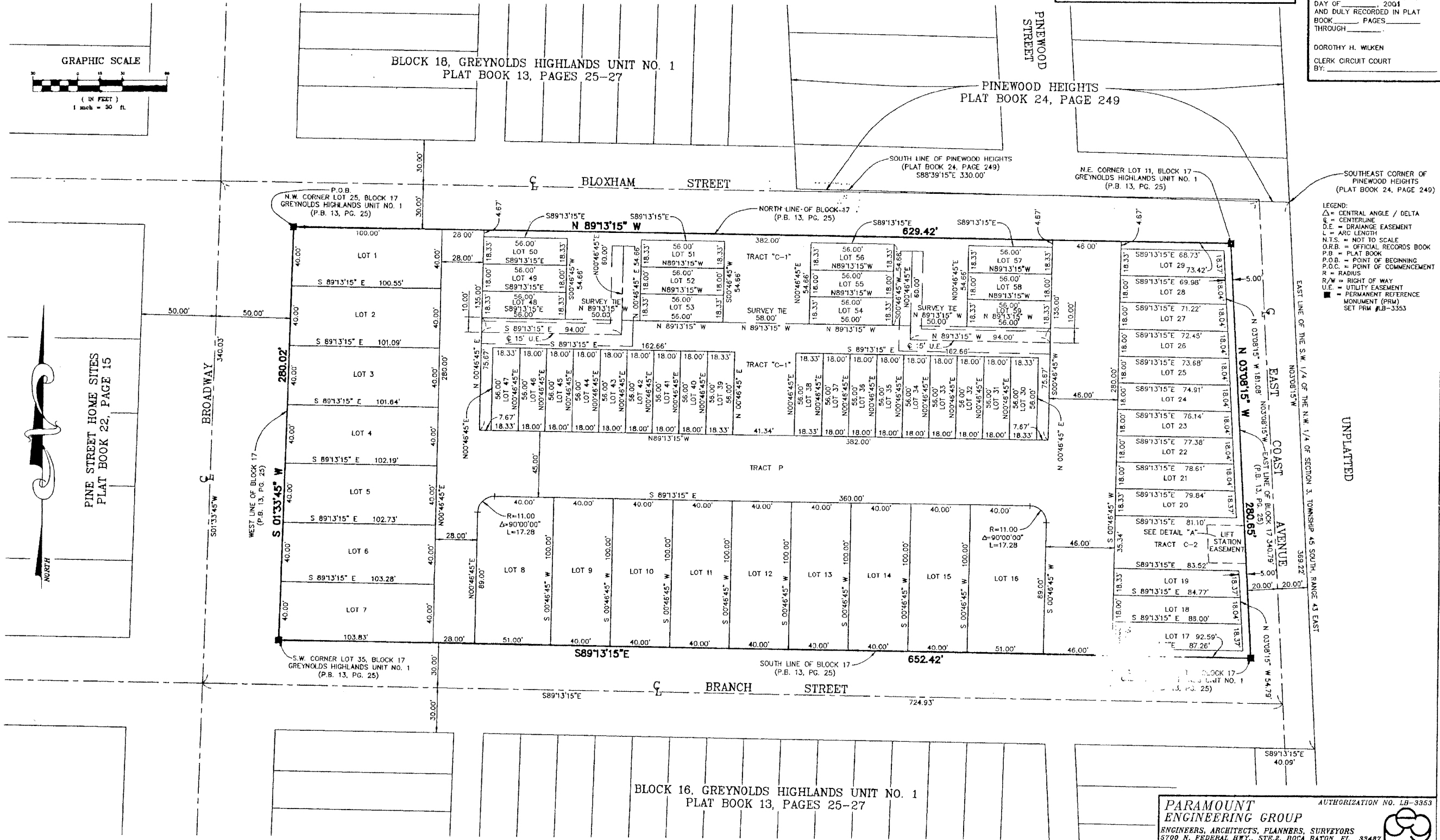


103

STATE OF FLORIDA)
 COUNTY OF PALM BEACH) SS

THIS PLAT WAS FILED FOR RECORD AT _____ THIS _____ 2001 DAY OF _____ AND DULY RECORDED IN PLAT BOOK _____ PAGES _____ THROUGH _____

DOROTHY H. WILKEN
 CLERK CIRCUIT COURT
 BY: _____



LEGEND:
 Δ = CENTRAL ANGLE / DELTA
 C.L. = CENTERLINE
 D.E. = DRAINAGE EASEMENT
 L = ARC LENGTH
 N.T.S. = NOT TO SCALE
 O.R.B. = OFFICIAL RECORDS BOOK
 P.B. = PLAT BOOK
 P.O.B. = POINT OF BEGINNING
 P.O.C. = POINT OF COMMENCEMENT
 R = RADIUS
 R/W = RIGHT OF WAY
 U.E. = UTILITY EASEMENT
 ■ = PERMANENT REFERENCE MONUMENT (PRM)
 SET FRM #LB-3353

AUTHORIZATION NO. LB-3353

PARAMOUNT ENGINEERING GROUP
 ENGINEERS, ARCHITECTS, PLANNERS, SURVEYORS
 5700 N. FEDERAL HWY., STE. 2, BOCA RATON, FL., 33487
 TELEPHONE: (561) 989-2280 - FAX: (561) 989-2284

DRAWN: M. SHATTO	DATE: 6/08/00	CHECKED BY: C.C. MILLER	SHEET: 2 OF 3
---------------------	------------------	----------------------------	------------------