

WINSTON TRAILS PARCEL SEVENTEEN

PART OF WINSTON TRAILS P.U.D.
BEING A REPLAT OF TRACT E,
WINSTON TRAILS EAST
PB 85, PGS 74-78
SITUATE IN SECTION 2, TOWNSHIP 45 SOUTH, RANGE 42 EAST
PALM BEACH COUNTY, FLORIDA
DECEMBER, 1999 SHEET 3 OF 6

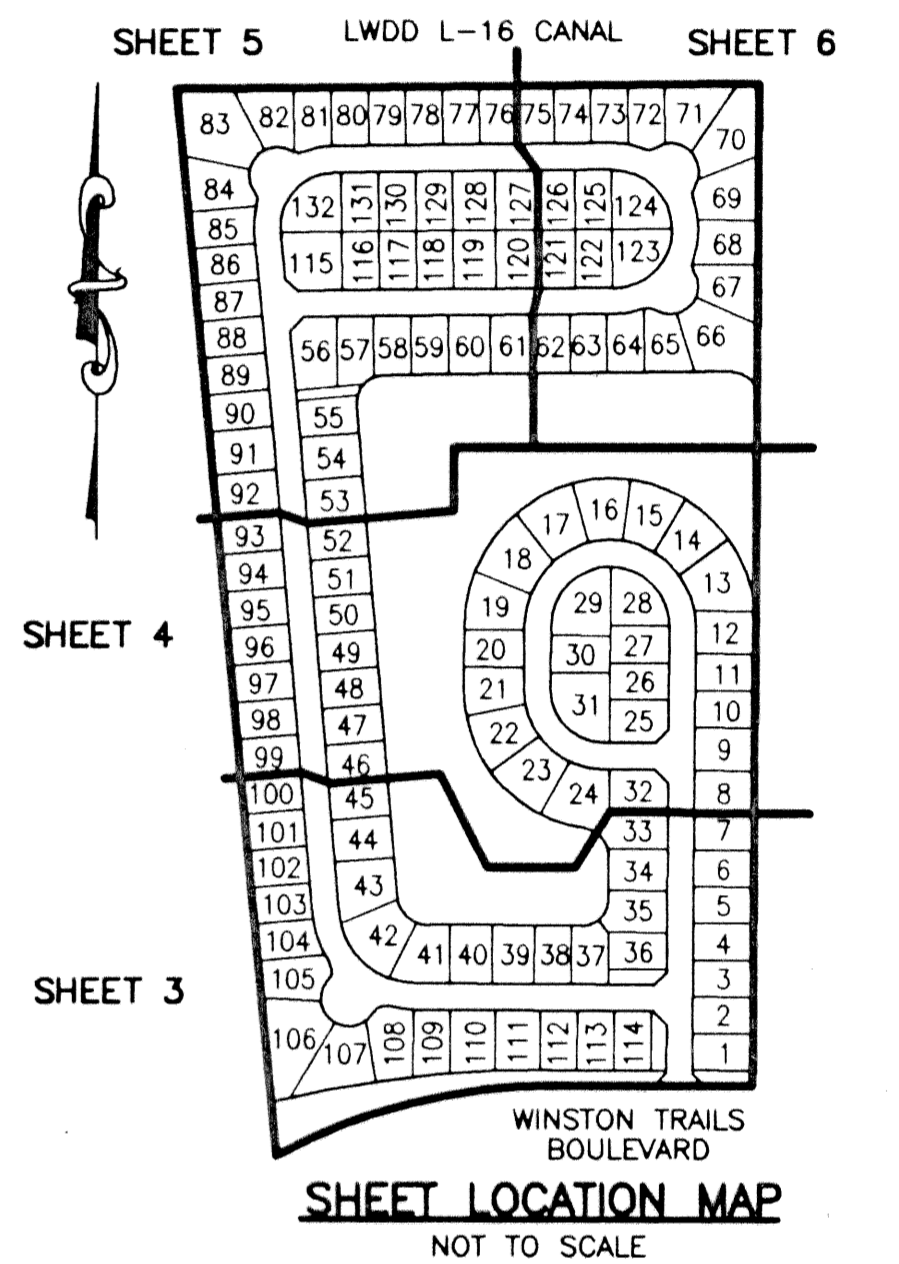
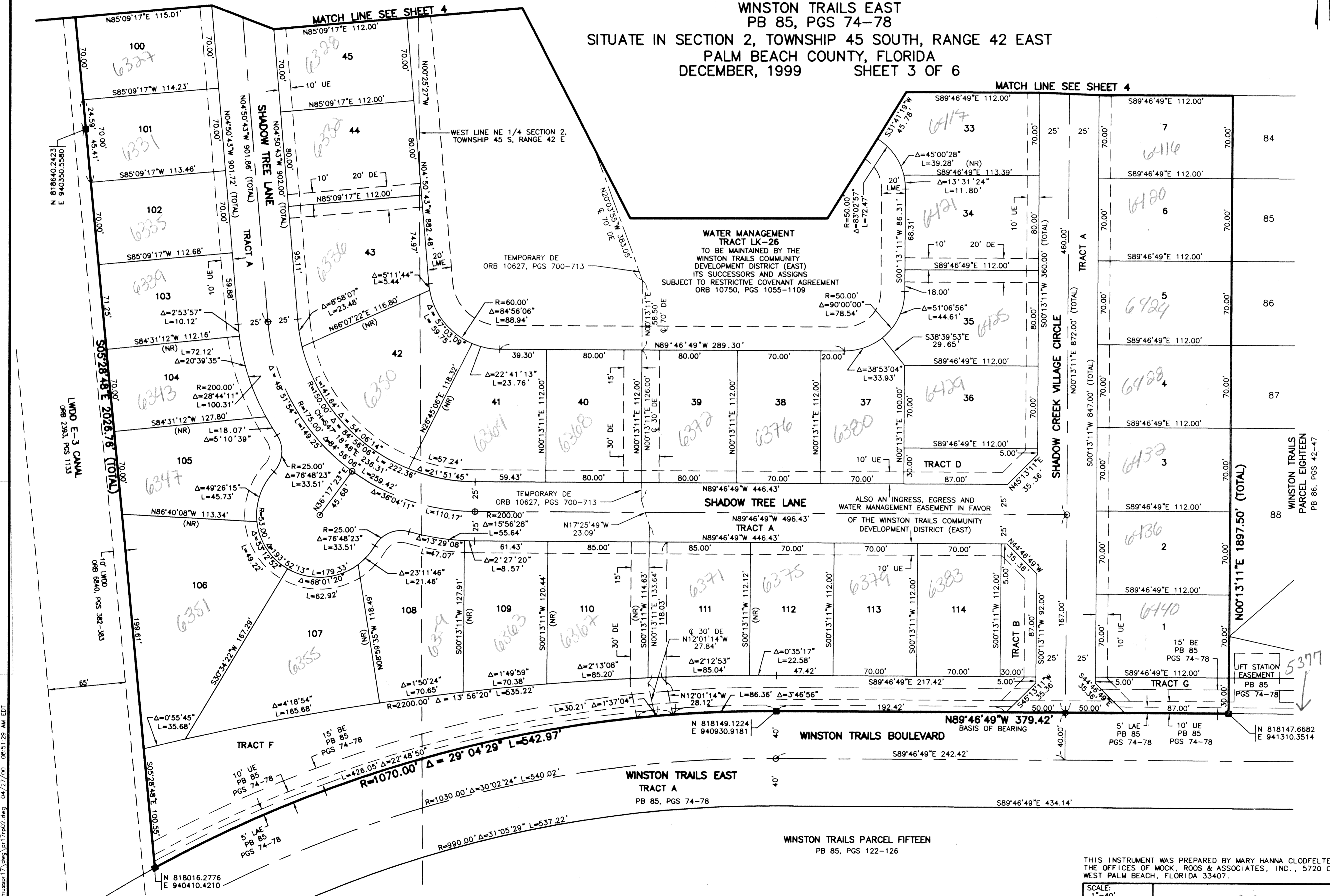
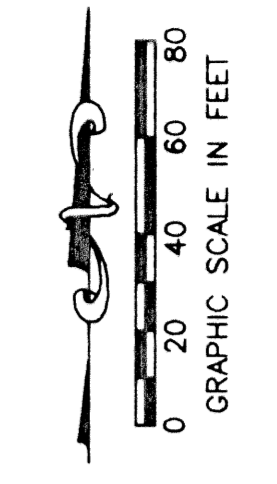
110

STATE OF FLORIDA
COUNTY OF PALM BEACH

THIS PLAT WAS FILED FOR
RECORD _____ DAY OF _____
AD, 2001 AND DULY RECORDED
IN PLAT BOOK _____ ON PAGES
_____ AND _____

DOROTHY H. WILKEN, CLERK
BY: _____, D.C.

CIRCUIT COURT SEAL



- LEGEND**
- L ARC LENGTH
 - BE BUFFER EASEMENT
 - Δ CENTRAL (DELTA) ANGLE
 - CH CHORD
 - DE DRAINAGE EASEMENT
 - FPL FLORIDA POWER & LIGHT
 - LAE LIMITED ACCESS EASEMENT
 - LME LAKE MAINTENANCE EASEMENT
 - LMAE LAKE MAINTENANCE ACCESS EASEMENT
 - LWDD LAKE WORTH DRAINAGE DISTRICT
 - (NR) NON-RADIAL
 - ORB OFFICIAL RECORD BOOK
 - PB PLAT BOOK
 - PG(S) PAGE(S)
 - PUD PLANNED UNIT OF DEVELOPMENT
 - R RADIUS
 - RAD RADIAL
 - (TYP) TYPICAL
 - UE UTILITY EASEMENT
 - PERMANENT REFERENCE MONUMENT FOUND LB-048
 - PERMANENT REFERENCE MONUMENT SET LB-048
 - PERMANENT CONTROL POINT SET LB-048
 - ⊙ CENTERLINE

SUBDIVISION WINSTON TRAILS PARCEL SEVENTEEN
 PLAT NO. 90
 FLOOD MAP NO. 1752
 ZONING RS/15F
 MAP NO. 34
 PARCEL NO. 17
 PLAT NO. 90
 ZIP CODE 33416
 FILE NAME: MUSSPR17.dwg
 REV.: 04-26-00
 CAD FILE: MUSSPR17/PR17R02

THIS INSTRUMENT WAS PREPARED BY MARY HANNA CLODFELTER, P.S.M. IN THE OFFICES OF MOCK, ROOS & ASSOCIATES, INC., 5720 CORPORATE WAY, WEST PALM BEACH, FLORIDA 33407.

SCALE: 1"=40'

P.A. NO.: 98008.70

DATE: DECEMBER 1999

DRAWING NO.: 45-42-02-146

5720 Corporate Way, West Palm Beach, Florida 33407
(561) 683-3113, fax 478-7248

MOCK • ROOS
ENGINEERS • SURVEYORS • PLANNERS

**WINSTON TRAILS
PARCEL SEVENTEEN**
PART OF WINSTON TRAILS P.U.D.
BEING A REPLAT OF TRACT E,
WINSTON TRAILS EAST
PB 85, PGS 74-78
SECTION 2, TOWNSHIP 45 SOUTH, RANGE 42 EAST
PALM BEACH COUNTY, FLORIDA

SHEET 3 OF 6