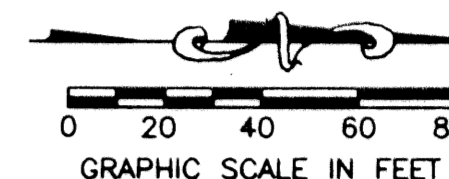
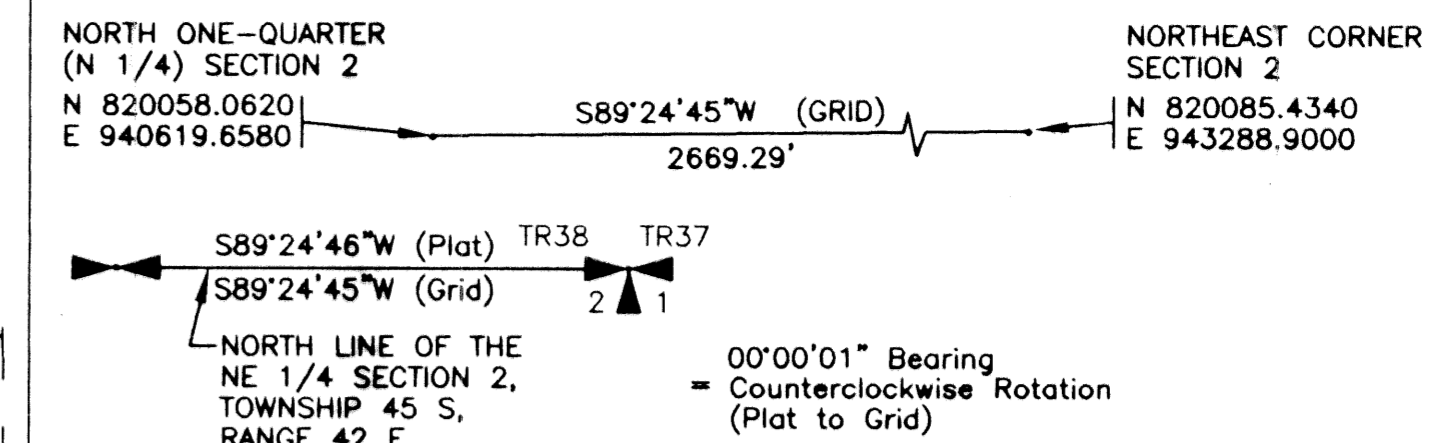


STATE OF FLORIDA
COUNTY OF PALM BEACH

THIS PLAN WAS FILED FOR
RECORD _____ DAY OF
THIS _____ AD, 2001 AND DULY RECORDED
IN PLAT BOOK _____ ON PAGES
AND _____

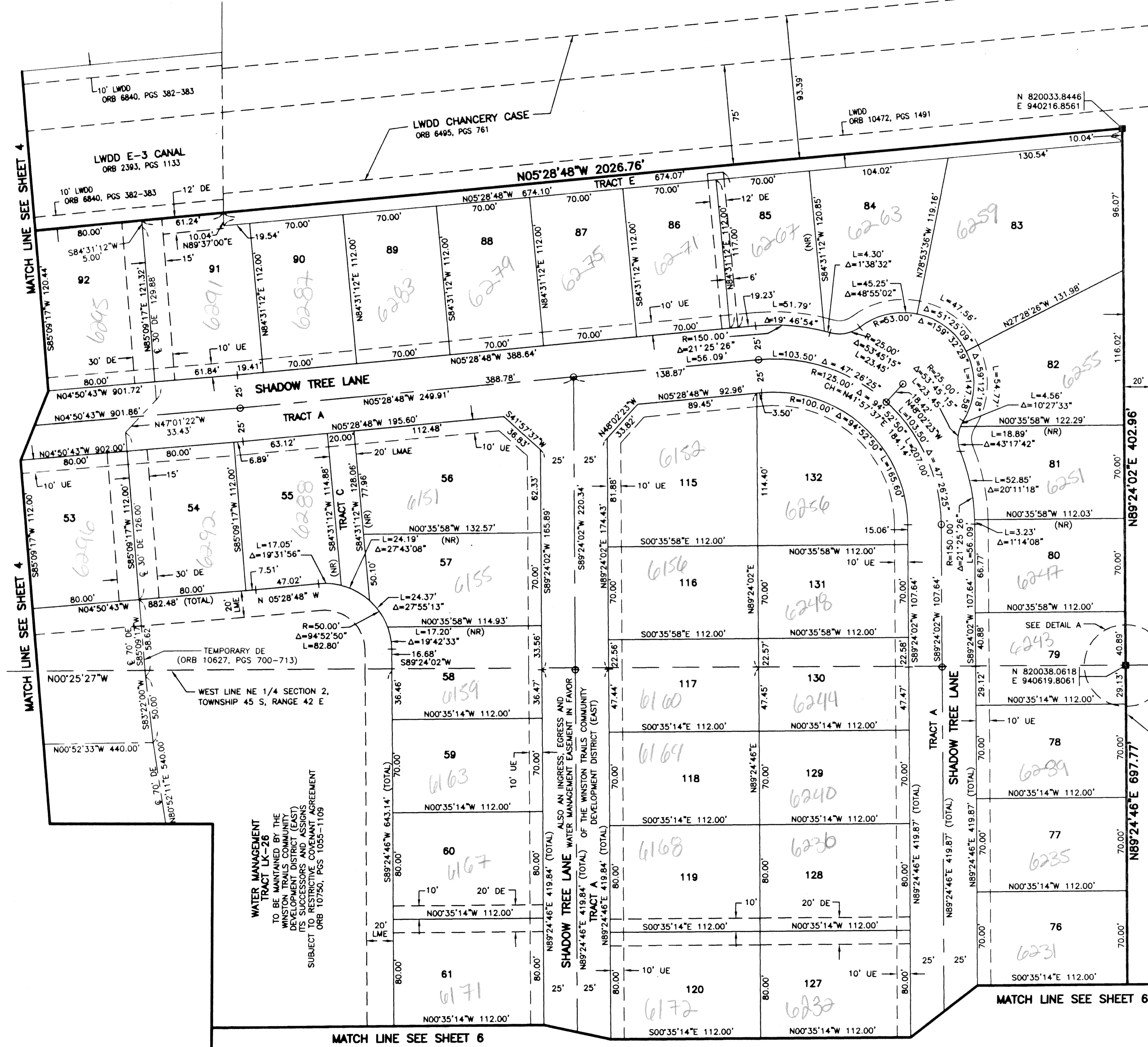
DOROTHY H. WILKEN, CLERK
BY: _____ D.C.

CIRCUIT COURT SEAL



WINSTON TRAILS PARCEL SEVENTEEN

PART OF WINSTON TRAILS P.U.D.
BEING A REPLAT OF TRACT E,
WINSTON TRAILS EAST
PB 85, PGS 74-78
SITUATE IN SECTION 2,
TOWNSHIP 45 SOUTH, RANGE 42 EAST
PALM BEACH COUNTY, FLORIDA
DECEMBER, 1999 SHEET 5 OF 6



WINSTON TRAILS PARK
PB 71, PGS 183-184

NORTH LINE SECTION 2
TOWNSHIP 45 S., RANGE 42 E

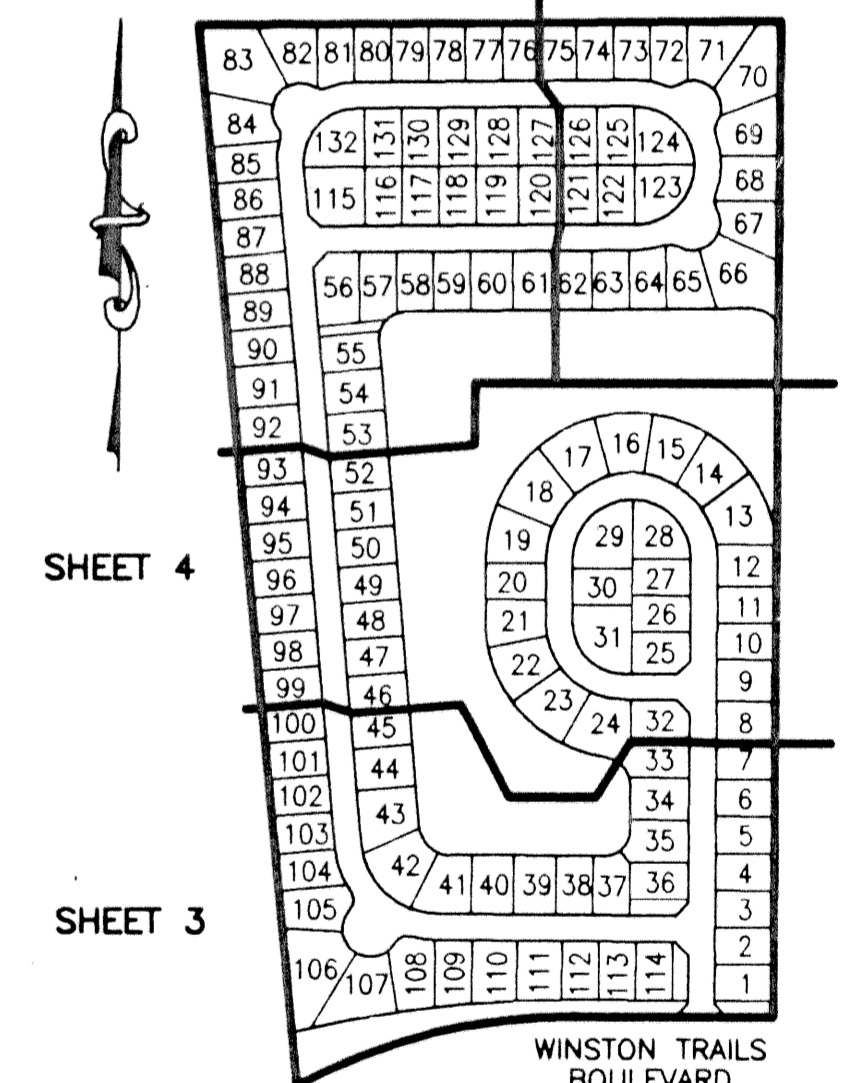
NORTH 1/4 CORNER SECTION 2
TOWNSHIP 45 S., RANGE 42 E

LWDD L-16 CANAL
ORB 2393, PGS 1133-1134

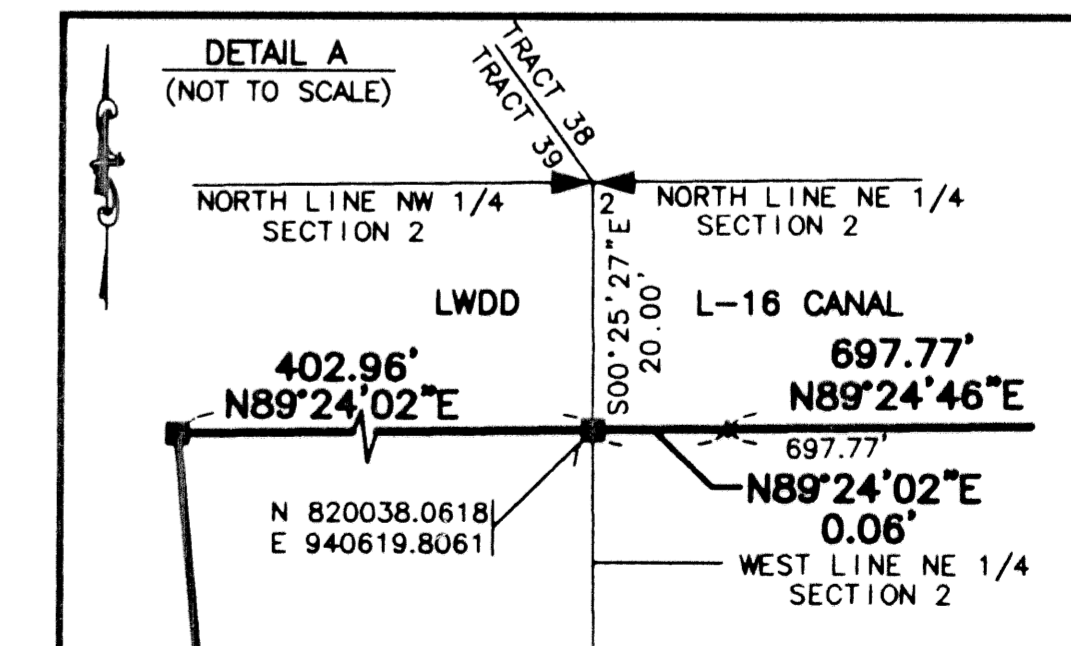
LEGEND

- L ARC LENGTH
- BE BUFFER EASEMENT
- Δ CENTRAL (DELTA) ANGLE
- CH CHORD
- DE DRAINAGE EASEMENT
- FL FLORIDA POWER & LIGHT
- LAE LIMITED ACCESS EASEMENT
- LME LAKE MAINTENANCE EASEMENT
- LMAE LAKE MAINTENANCE ACCESS EASEMENT
- LWDD LAKE WORTH DRAINAGE DISTRICT
- (NR) NON-RADIAL
- ORB OFFICIAL RECORD BOOK
- PG(S) PAGE(S)
- PUD PLANNED UNIT OF DEVELOPMENT
- R RADIUS
- RAD RADIAL
- (TYP) TYPICAL
- UE UTILITY EASEMENT
- PERMANENT REFERENCE MONUMENT
- FOUND LB-048
- PERMANENT REFERENCE MONUMENT
- SET LB-048
- PERMANENT CONTROL POINT
- SET LB-048
- CENTERLINE
- LE LANDSCAPE EASEMENT

SHEET 5 LWDD L-16 CANAL SHEET 6



SHEET LOCATION MAP
NOT TO SCALE



WATER MANAGEMENT TRACT LK-26
TO BE MAINTAINED BY THE
WINSTON TRAILS COMMUNITY
DEVELOPMENT DISTRICT (EAST)
ITS SUCCESSORS AND ASSIGNS
SUBJECT TO RESTRICTIVE COVENANT AGREEMENT
ORB 10750, PGS 1055-1109

SHADOW TREE LANE ALSO AN INGRESS, EGRESS AND
WATER MANAGEMENT EASEMENT IN FAVOR
OF THE WINSTON TRAILS COMMUNITY
DEVELOPMENT DISTRICT (EAST)

MATCH LINE SEE SHEET 4

MATCH LINE SEE SHEET 4

MATCH LINE SEE SHEET 6

MATCH LINE SEE SHEET 6

THIS INSTRUMENT WAS PREPARED BY MARY HANNA CLODFELTER, P.S.M. IN
THE OFFICES OF MOCK, ROOS & ASSOCIATES, INC., 5720 CORPORATE WAY,
WEST PALM BEACH, FLORIDA 33407.

SCALE:
1"=40'
P.A. NO.:
98008.70
DATE:
DECEMBER 1999
DRAWING NO.:
45-42-02-146

MOCK • ROOS
ENGINEERS • SURVEYORS • PLANNERS
5720 Corporate Way, West Palm Beach, Florida 33407
(561) 683-3113, fax 478-7248

WINSTON TRAILS
PARCEL SEVENTEEN
PART OF WINSTON TRAILS P.U.D.
BEING A REPLAT OF TRACT E,
WINSTON TRAILS EAST
PB 85, PGS 74-78
SECTION 2, TOWNSHIP 45 SOUTH, RANGE 42 EAST
PALM BEACH COUNTY, FLORIDA

S:\muss\musspr17\dep\pr17p04.dwg 06/13/00 11:02:30 AM EDT
REV.: 06-13-00
CAD FILE:
MUSSPR17/PR17R04

SUBDIVISION Winston Trails Parcel Seventeen
PAGE 112
FLOOD MAP # 75B
ZONING RS15E
S. 34-34
R. 87-11a
TAG # 30
PUD NAME