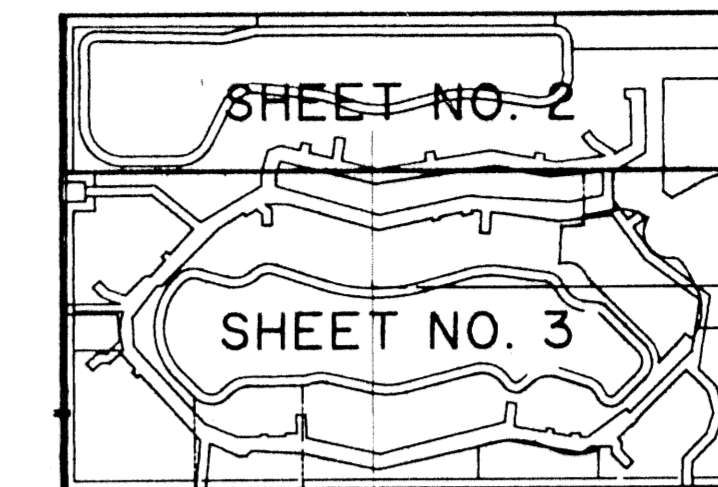


# STONYBROOK PLAT NO. 2

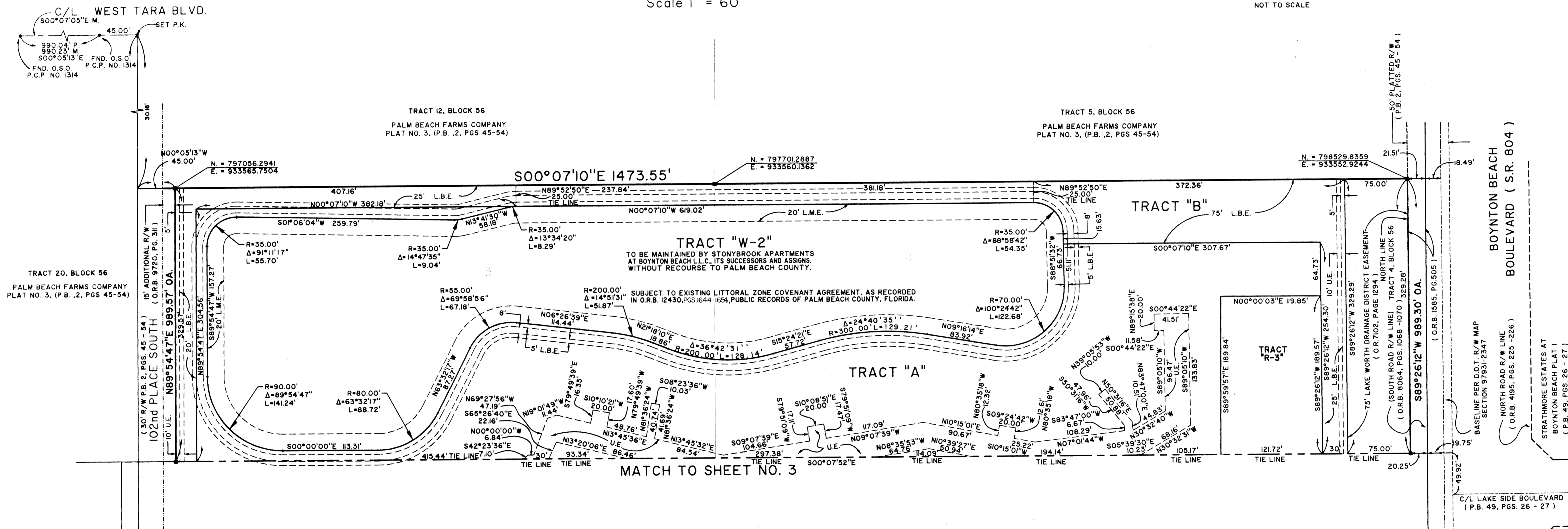
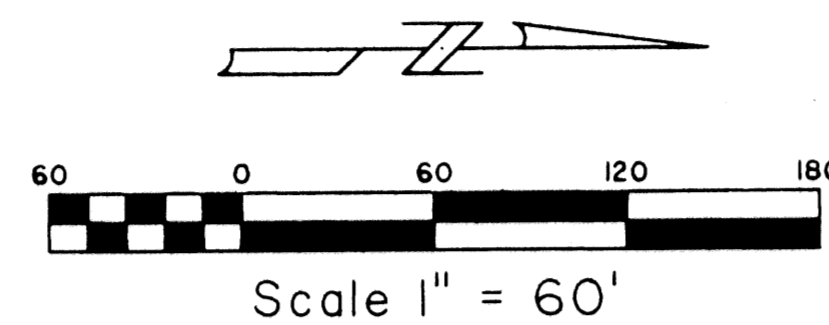
## SIESTA KEY - P.U.D.

BEING A REPLAT OF TRACT 4 AND A PORTION OF TRACT 13, BLOCK 56, PALM BEACH FARMS COMPANY, PLAT NO. 3, AS RECORDED IN PLAT BOOK 2, PAGES 45 THRU 54 OF THE PUBLIC RECORDS OF PALM BEACH COUNTY, FLORIDA AND A REPLAT OF ALL OF STONYBROOK SIESTA KEY - P.U.D. AS RECORDED IN PLAT BOOK 87 PAGES 103 AND 104, OF THE PUBLIC RECORDS OF PALM BEACH COUNTY, FLORIDA AND LYING IN SECTIONS 22 AND 27, TOWNSHIP 45 SOUTH, RANGE 42 EAST, PALM BEACH COUNTY, FLORIDA.  
SHEET 2 OF 3



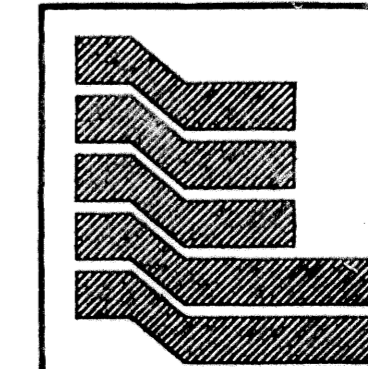
KEY MAP  
NOT TO SCALE

STATE OF FLORIDA  
COUNTY OF PALM BEACH  
THIS PLAT WAS FILED FOR RECORD AT \_\_\_\_\_  
M. THE DAY OF \_\_\_\_\_ 2001  
AND DULY RECORDED IN PLAT BOOK NO. \_\_\_\_\_  
ON PAGE \_\_\_\_\_  
DOROTHY H. WALKEN, CLERK OF THE CIRCUIT COURT  
BY \_\_\_\_\_ D.C.



### COORDINATE NOTE:

STATE PLANE COORDINATES SHOWN ARE GRID DATUM, NAD 83 1990 ADJUSTMENT, FLORIDA EAST ZONE, COORDINATE SYSTEM 1983 STATE PLANE, TRANSVERSE MERCATOR PROJECTION  
LINEAR UNIT - US SURVEY FEET  
ALL DISTANCES ARE GROUND  
SCALE FACTOR = 1.00002936  
GROUND DISTANCE X SCALE FACTOR = GRID DISTANCE  
N 89°54'47"E (PLAT BEARING) -00°22'45" COUNTERCLOCKWISE ROTATION PLAT TO GRID  
N 89°52'02"E (GRID BEARING)  
- THE SOUTH LINE OF PLAT.



Landmark Surveying & Mapping Inc.  
1850 Forest Hill Boulevard  
Ph. (561) 433-5405 Suite 100 W.P.B. Florida

### STONYBROOK PLAT NO. 2

PLAT NO. 2  
BLOCK 56  
PALM BEACH FARMS COMPANY  
PLAT NO. 3, (P.B. 2, PGS 45-54)  
PAGE 124  
SECTION 27  
TOWNSHIP 45 S  
RANGE 42 E  
ZIP CODE 33437  
SIESTA KEY PUD