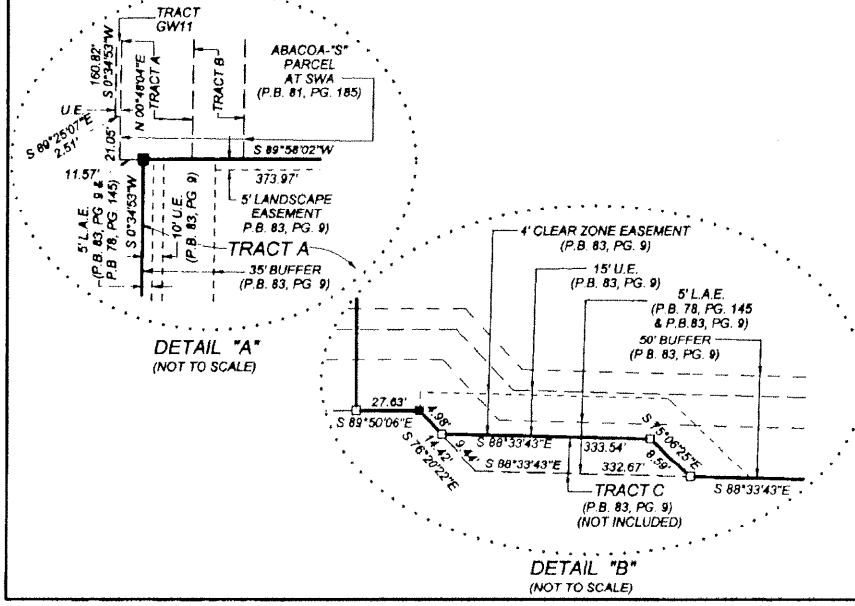
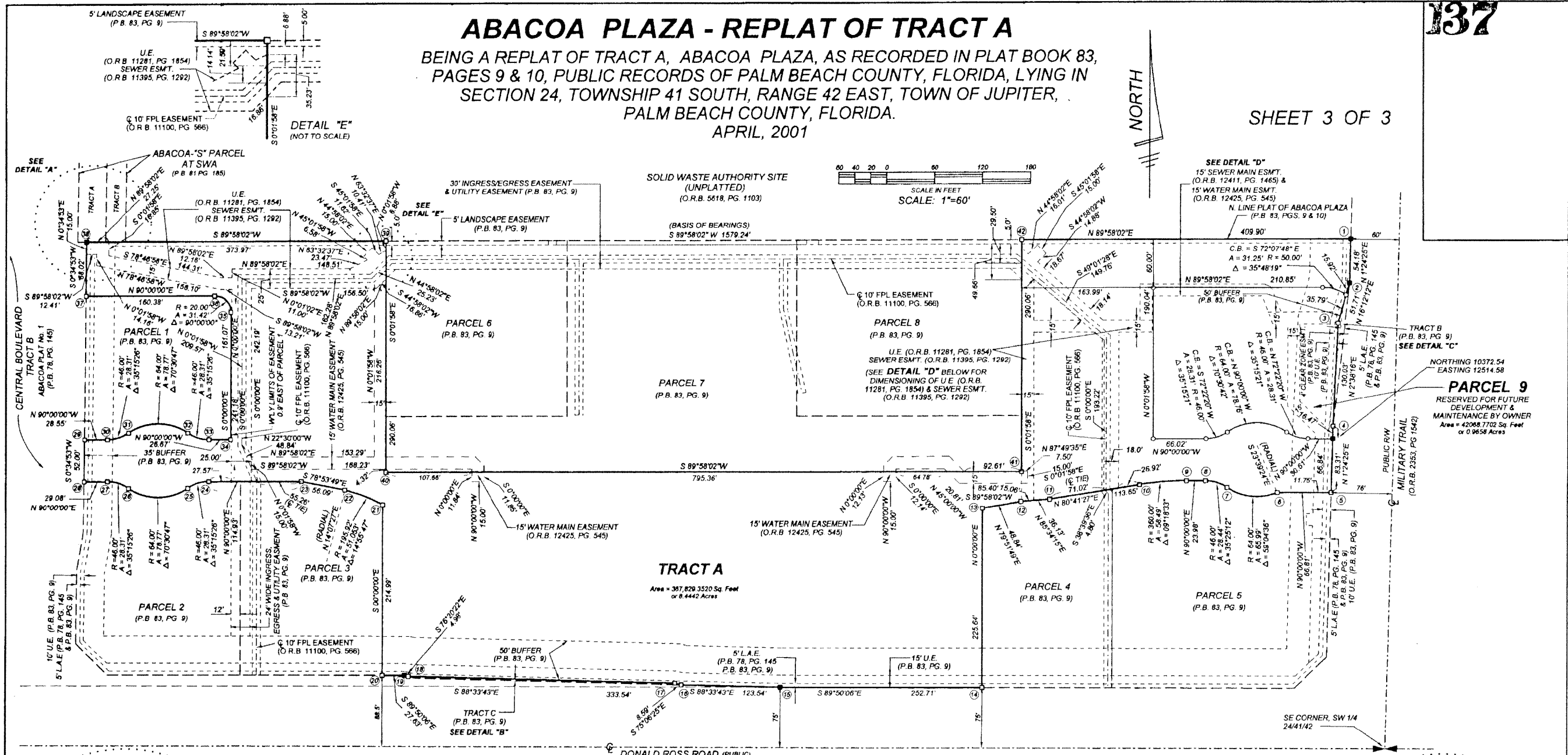


ABACOA PLAZA - REPLAT OF TRACT A

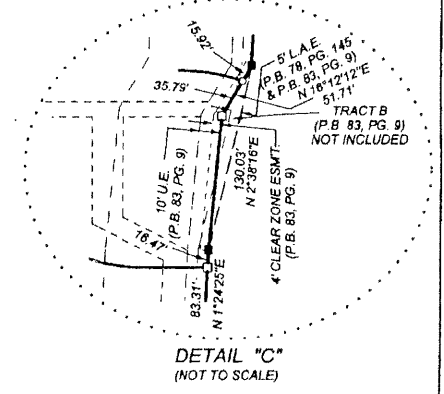
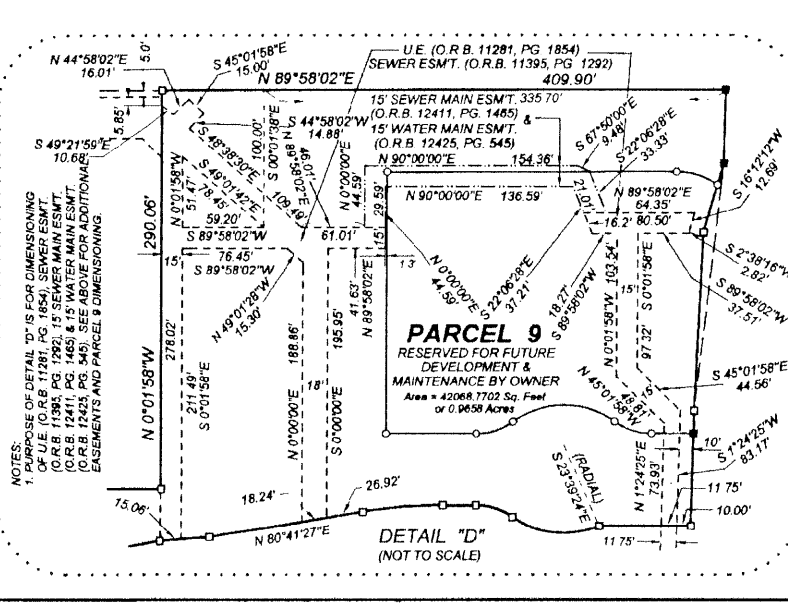
BEING A REPLAT OF TRACT A, ABACOA PLAZA, AS RECORDED IN PLAT BOOK 83, PAGES 9 & 10, PUBLIC RECORDS OF PALM BEACH COUNTY, FLORIDA, LYING IN SECTION 24, TOWNSHIP 41 SOUTH, RANGE 42 EAST, TOWN OF JUPITER, PALM BEACH COUNTY, FLORIDA.
APRIL, 2001

SHEET 3 OF 3



ABBREVIATIONS & SYMBOLS

1. —	Denotes Set Permanent Reference Monuments (P.R.M.'s) Stamped P.R.M. P.L.S. # 3357.
2. C	Centerline
3. R.W.	Right of Way
4. P.B.	Plat Book
5. P.G.(S)	Pages
6. SEC.	Section
7. TWP.	Township
8. RGE.	Range
9. U.E.	Utility Easement
10. D.E.	Drainage Easement
11. D.B.	Deed Book
12. A	Arc Length
13. Δ	Central Angle
14. R	Radius
15. C.B.	Chord Bearing
16. O.R.B.	Official Record Book
17. R.P.B.	Road Plat Book
18. L.A.E.	Limited Access Easement
19. P.O.C.	Point of Commencement
20. P.O.B.	Point of Beginning
21. P.B.C.	Palm Beach County
22. FND.	Found
23. ESMT	Easement
24. W.Y.	Westerly
25. —	Denotes Found Permanent Reference Monuments (P.R.M.'s) Stamped as noted
26. —	Set 5/8" diameter steel rod with plastic cap stamped "WALLACE LB 4569"
27. N.P.B.C.I.D.	Northern Palm Beach County Improvement District



ABACOA PLAZA - REPLAT OF TRACT A

WALLACE HARVEY INC.
CORP. LICENSED SURVEYOR & ENGINEER
11111 NORTHPOINT PARKWAY, SUITE 111, WEST PALM BEACH, FLORIDA 33411-8040

FIELD D.W./G.W.	JOB No.: 99-1335 "A"	F.B. S/J96 PG. 28/46
OFFICE R.C.	DATE: DEC, 2000	DWG No.: 99-1335-1
C/K'D:	REF:	SHEET 3 OF 3