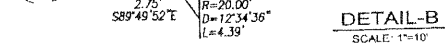
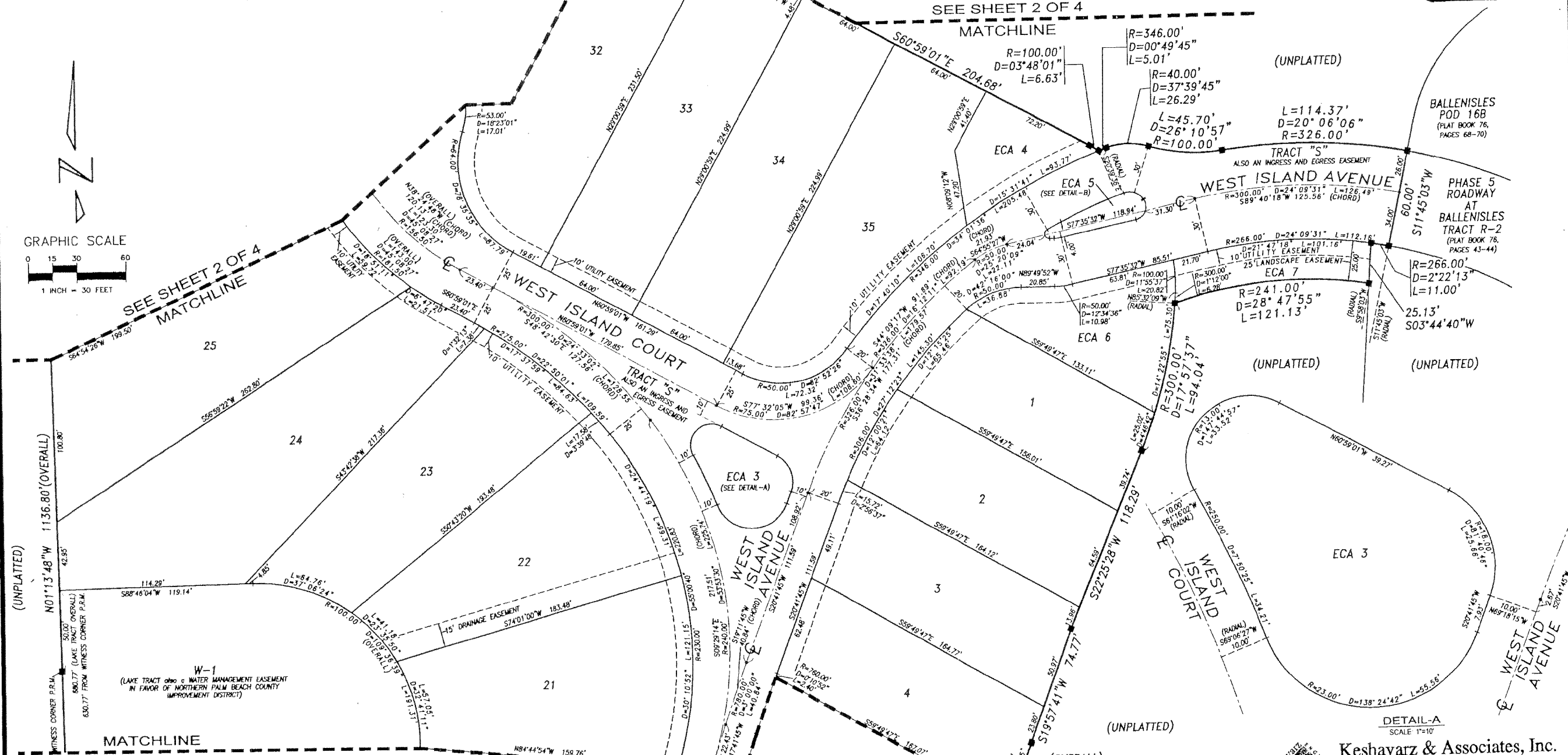
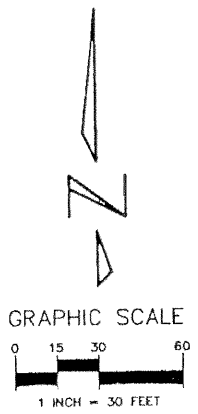


BALLENISLES POD 15

A PARCEL OF LAND LYING WITHIN THE SOUTHWEST QUARTER OF SECTION 14, TOWNSHIP 42 SOUTH, RANGE 42 EAST CITY OF PALM BEACH GARDENS PALM BEACH COUNTY, FLORIDA SHEET 3 OF 4 APRIL 2001

152

STATE OF FLORIDA
COUNTY OF PALM BEACH
THIS PLAT WAS FILED FOR RECORD AT _____ THIS _____ DAY OF _____ A.D. 2001, AND DULY RECORDED IN PLAT BOOK _____ ON PAGES _____ AND _____
DOROTHY WILKEN, CLERK
CIRCUIT COURT,
BY: _____ DC



SYMBOLS LEGEND	
■	SET PERMANENT REFERENCE MONUMENT (P.R.M.) "L.B. 4897"
□	PERMANENT REFERENCE MONUMENT NOT SET
*	SET PERMANENT CONTROL POINT (P.C.P.) "L.B. 4897"
N.P.B.C.D.	NORTHERN PALM BEACH COUNTY IMPROVEMENT DISTRICT
R	RADIUS
D	CENTRAL ANGLE
L	ARC LENGTH
E.C.A.	EXCLUSIVE COMMON AREA
C	CENTERLINE
P.O.C.	POINT OF COMMENCING
P.O.B.	POINT OF BEGINNING

Keshavarz & Associates, Inc.
CONSULTING ENGINEERS - SURVEYORS
1280 N. Congress Avenue, Suite 206
West Palm Beach, Florida 33409
Tel: (561) 689-8600 Fax: (561) 689-7476 LB 4897
THIS INSTRUMENT WAS PREPARED BY MANUEL A. GUTIERREZ, P.S.M.
PROFESSIONAL SURVEYOR AND MAPPER NO. 4102
IN THE OFFICES OF KESHAVARZ & ASSOCIATES, INC.