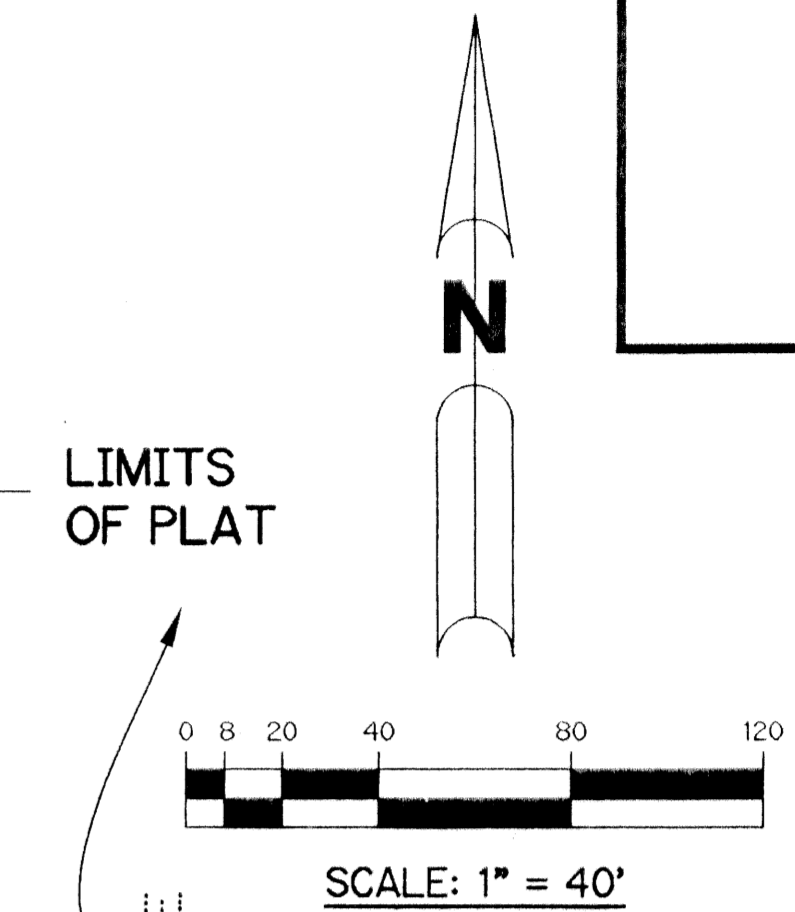
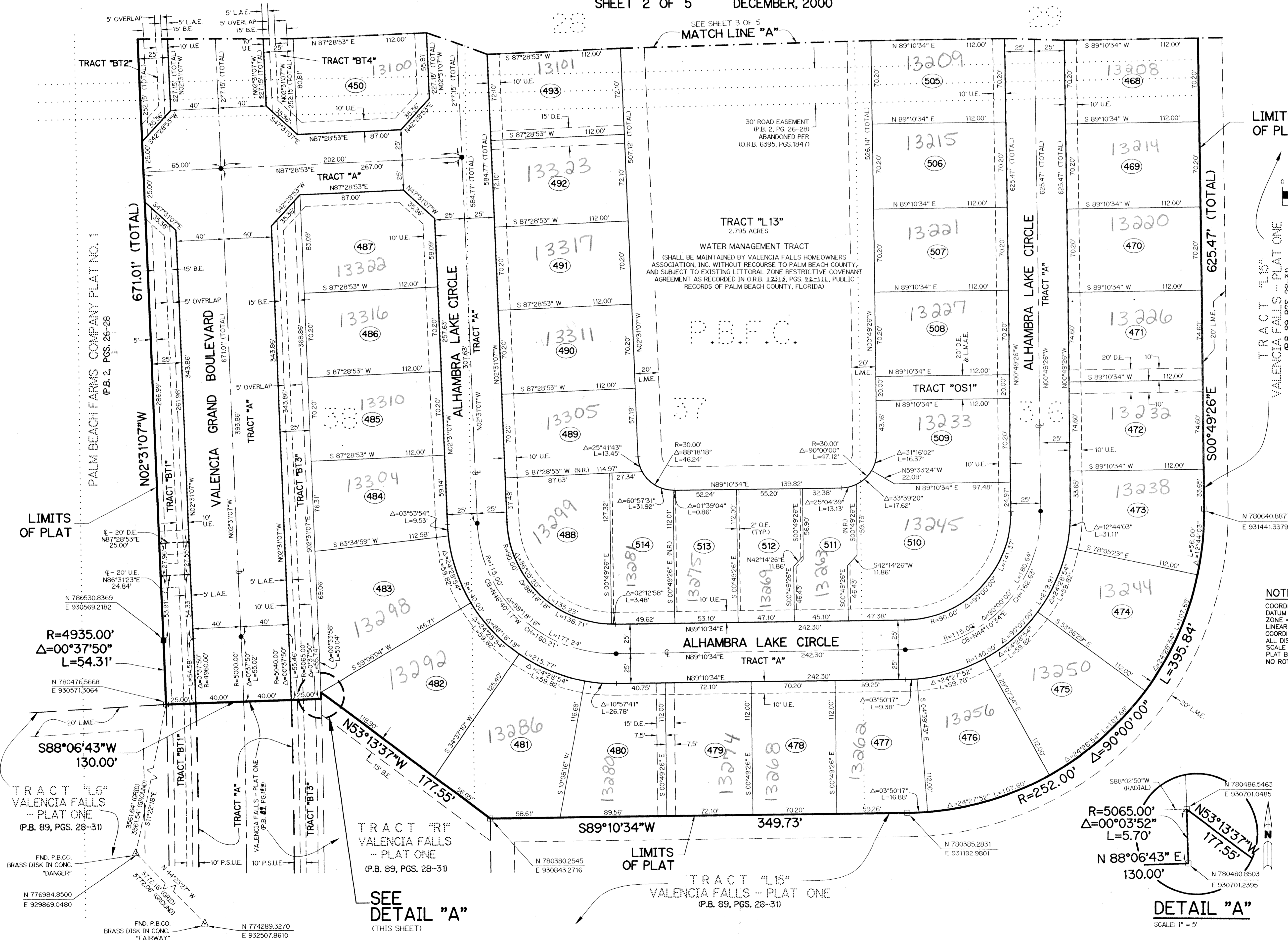


VALENCIA FALLS - PLAT EIGHT

BEING A REPLAT OF A PORTION OF TRACTS 5, 27 THROUGH 38 AND A PORTION OF TRACT 64,
PALM BEACH FARMS COMPANY PLAT NO. 1 AS RECORDED IN PLAT BOOK 2, PAGES 26 THROUGH 28
OF THE PUBLIC RECORDS OF PALM BEACH COUNTY, FLORIDA. LYING IN
SECTION 9, TOWNSHIP 46 SOUTH, RANGE 42 EAST.

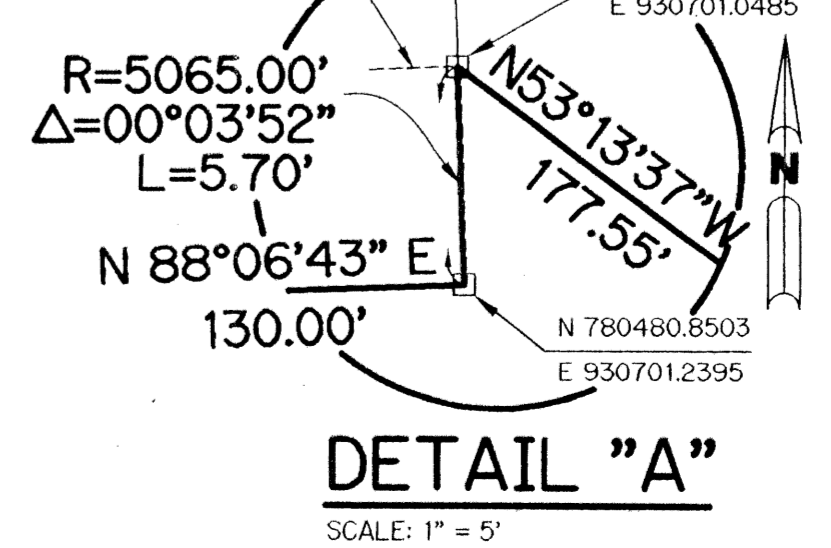
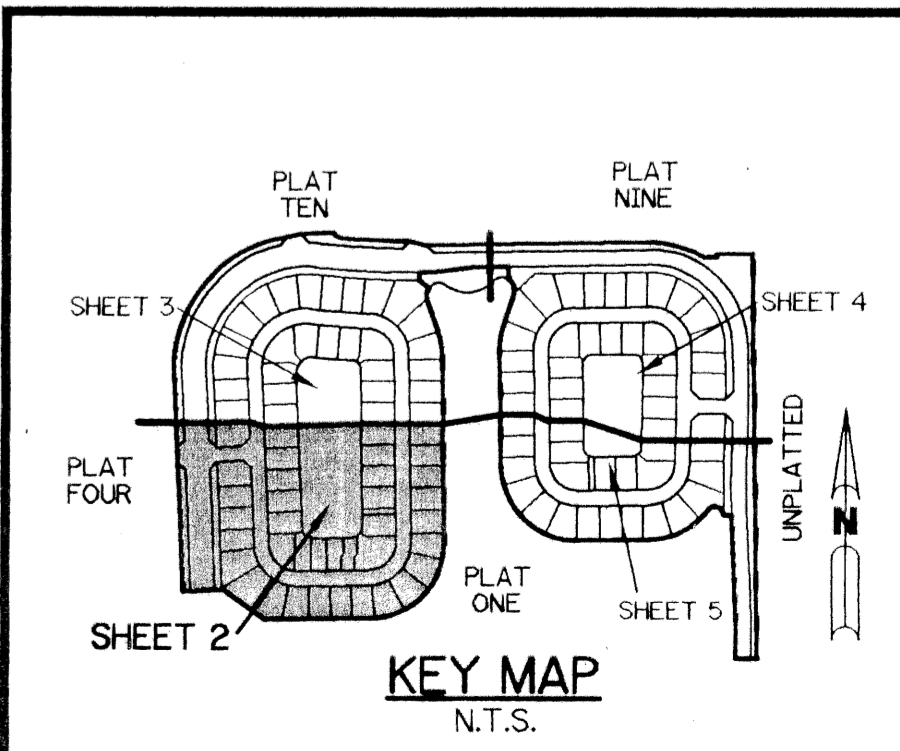
SHEET 2 OF 5 DECEMBER, 2000

THIS INSTRUMENT PREPARED BY
PERRY C. WHITE, P.S.M. 4213, STATE OF FLORIDA
LAWSON, NOBLE AND WEBB, INC.
ENGINEERS PLANNERS SURVEYORS
420 COLUMBIA DRIVE
WEST PALM BEACH, FLORIDA 33409
LB-6674



- LEGEND:**
- SET PERMANENT REFERENCE MONUMENT, L.B. #6674
 - FOUND PERMANENT REFERENCE MONUMENT, L.B. #6674
 - SET PERMANENT CONTROL POINT, L.B. #6674
 - FOUND PERMANENT CONTROL POINT, L.B. #6674
 - △ DELTA ANGLE
 - B.E. BUFFER EASEMENT
 - CB CHORD BEARING
 - CH CHORD DISTANCE
 - CL CENTERLINE
 - DB DEED BOOK
 - DE DRAINAGE EASEMENT
 - L ARC LENGTH
 - L.A.E. LIMITED ACCESS EASEMENT
 - L.M.A.E. LAKE MAINTENANCE ACCESS EASEMENT
 - L.M.E. LAKE MAINTENANCE EASEMENT
 - L.W.D.D. LAKE WORTH DRAINAGE DISTRICT
 - N.R. NOT RADIAL
 - N.T.S. NOT TO SCALE
 - O.E. OVERHANG EASEMENT
 - OR.B. OFFICIAL RECORD BOOK
 - P.B. PLAT BOOK
 - P.S. PAGES
 - P.S.M. PROFESSIONAL SURVEYOR AND MAPPER
 - R RADIUS
 - RAD. RADIAL
 - R/W RIGHT-OF-WAY
 - S.T. SURVEY TIE
 - U.E. UTILITY EASEMENT
 - P.B.F.C. PALM BEACH FARMS COMPANY PLAT NO. 1 (P.B. 2, PGS. 26-28)
 - DENOTES TRACT NUMBER PER PALM BEACH FARMS COMPANY PLAT NO. 1 (P.B. 2, PG. 26)
 - DENOTES STATE PLANE COORDINATES

NOTE:
COORDINATES SHOWN ARE GRID COORDINATES
DATUM = NAD 83 (1990 ADJUSTMENT)
ZONE = FLORIDA EAST ZONE
LINEAR UNIT = U.S. SURVEY FEET
COORDINATE SYSTEM = 1983 STATE PLANE TRANSVERSE MERCATOR PROJECTION
ALL DISTANCES ARE GROUND
SCALE FACTOR = 1.0000278
PLAT BEARING = GRID BEARING
NO ROTATION



Subdivision Valencia Falls - Plat 8
Book 40
Page 158
Flood Zone B
Quadrant 51
SE 89 19
TAZ 460
PUD NAME