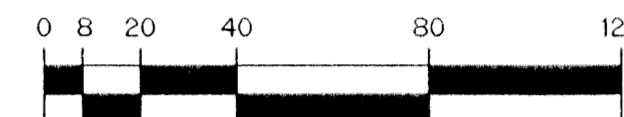


THIS INSTRUMENT PREPARED BY
PERRY C. WHITE, P.S.M. 4213, STATE OF FLORIDA
LAWSON, NOBLE AND WEBB, INC.
ENGINEERS PLANNERS SURVEYORS
420 COLUMBIA DRIVE
WEST PALM BEACH, FLORIDA 33409
LB-6674

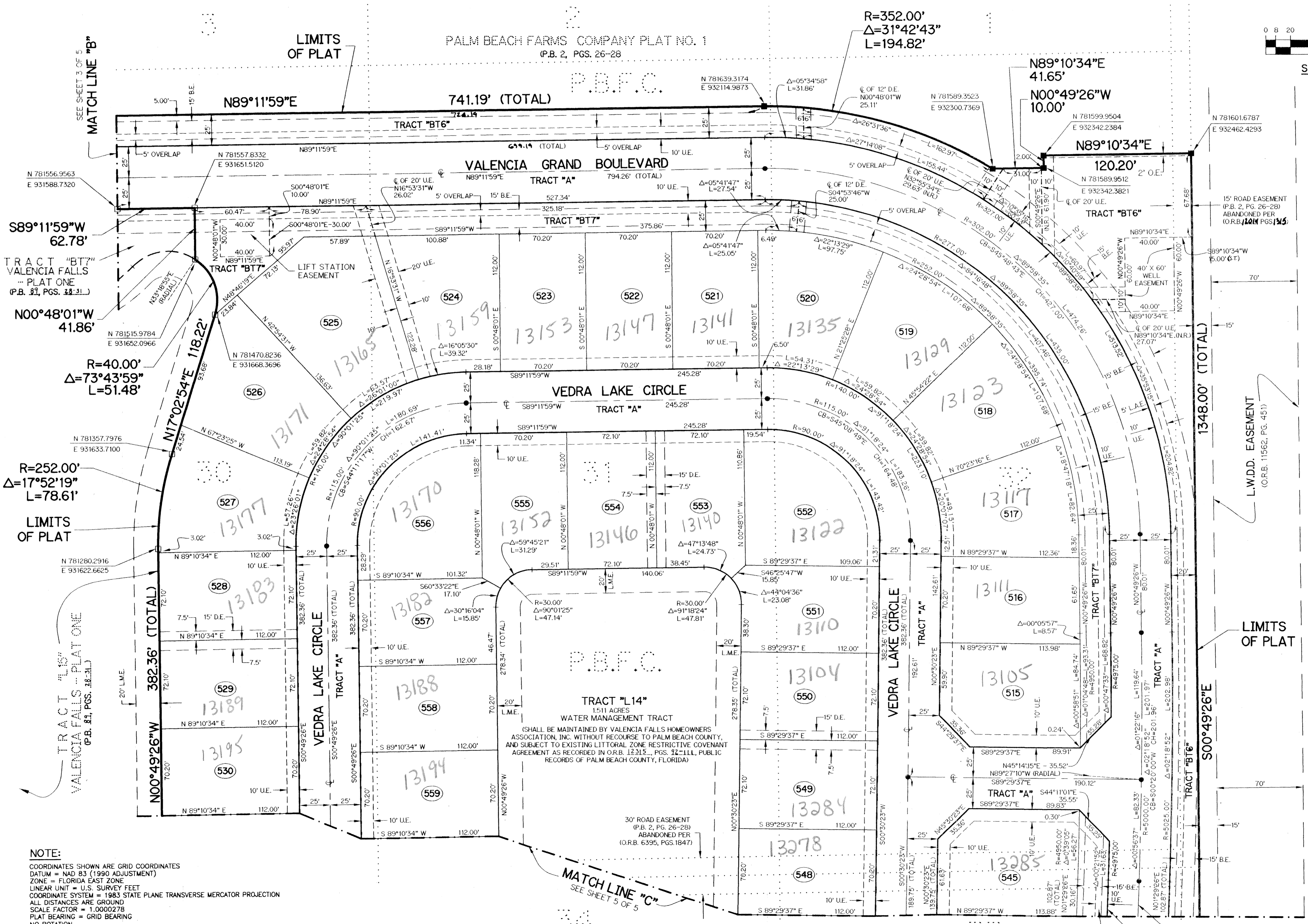
VALENCIA FALLS - PLAT EIGHT

BEING A REPLAT OF A PORTION OF TRACTS 5, 27 THROUGH 38 AND A PORTION OF TRACT 64,
PALM BEACH FARMS COMPANY PLAT NO. 1 AS RECORDED IN PLAT BOOK 2, PAGES 26 THROUGH 28
OF THE PUBLIC RECORDS OF PALM BEACH COUNTY, FLORIDA. LYING IN
SECTION 9, TOWNSHIP 46 SOUTH, RANGE 42 EAST.

SHEET 4 OF 5 DECEMBER, 2000

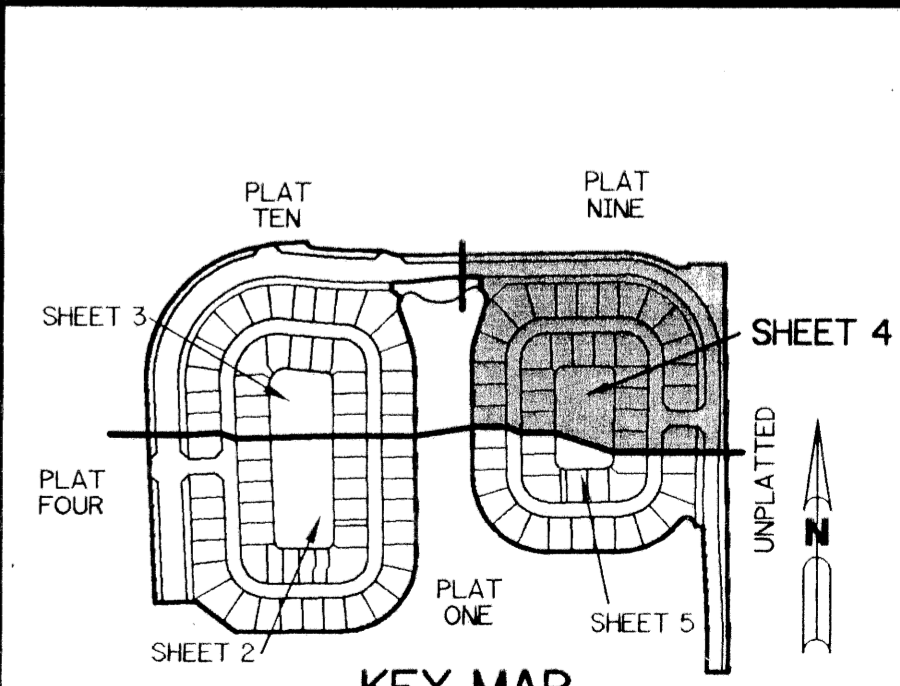


SCALE: 1" = 40'



- LEGEND:**
- - SET PERMANENT REFERENCE MONUMENT, L.B. #6674
 - - FOUND PERMANENT REFERENCE MONUMENT, L.B. #6674
 - - SET PERMANENT CONTROL POINT, L.B. #6674
 - - FOUND PERMANENT CONTROL POINT, L.B. #6674
 - Δ - DELTA ANGLE
 - B.E. - BUFFER EASEMENT
 - CB - CHORD BEARING
 - CH - CHORD DISTANCE
 - CL - CENTERLINE
 - D.B. - DEED BOOK
 - D.E. - DRAINAGE EASEMENT
 - L - ARC LENGTH
 - L.A.E. - LIMITED ACCESS EASEMENT
 - L.M.A.E. - LAKE MAINTENANCE ACCESS EASEMENT
 - L.M.E. - LAKE MAINTENANCE EASEMENT
 - L.W.D.D. - LAKE WORTH DRAINAGE DISTRICT
 - N.R. - NOT RADIAL
 - N.T.S. - NOT TO SCALE
 - O.E. - OVERHANG EASEMENT
 - O.R.B. - OFFICIAL RECORD BOOK
 - P.B. - PLAT BOOK
 - PGS. - PAGES
 - P.S.M. - PROFESSIONAL SURVEYOR AND MAPPER
 - R - RADIUS
 - RAD. - RADIAL
 - R/W - RIGHT-OF-WAY
 - S.T. - SURVEY TIE
 - U.E. - UTILITY EASEMENT
 - P.B.F.C. - PALM BEACH FARMS COMPANY PLAT NO. 1 (P.B. 2, PGS. 26 - 28)
 - - DENOTES TRACT NUMBER PER PALM BEACH FARMS COMPANY PLAT NO. 1 (P.B. 2, PG. 26)
 - N 737648.0171 E 906258.2326 - DENOTES STATE PLANE COORDINATES

UNPLATTED
A CREEGE



Valencia Falls - Plat 8
BOOK 90 PAGE 160
FLOOR MAP # 200A
QUAD # 51
SE 89 19
TAZ 465
PUD NAME

NOTE:
COORDINATES SHOWN ARE GRID COORDINATES
DATUM = NAD 83 (1990 ADJUSTMENT)
ZONE = FLORIDA EAST ZONE
LINEAR UNIT = U.S. SURVEY FEET
COORDINATE SYSTEM = 1983 STATE PLANE TRANSVERSE MERCATOR PROJECTION
ALL DISTANCES ARE GROUND
SCALE FACTOR = 1.0000278
PLAT BEARING = GRID BEARING
NO ROTATION

TRACT "L14"
1.511 ACRES
WATER MANAGEMENT TRACT
(SHALL BE MAINTAINED BY VALENCIA FALLS HOMEOWNERS ASSOCIATION, INC. WITHOUT RECOURSE TO PALM BEACH COUNTY, AND SUBJECT TO EXISTING LITTORAL ZONE RESTRICTIVE COVENANT AGREEMENT AS RECORDED IN O.R.B. 12315, PGS. 32-111, PUBLIC RECORDS OF PALM BEACH COUNTY, FLORIDA)

MATCH LINE "C"
SEE SHEET 5 OF 5