

OSCEOLA WOODS

BEING A REPLAT OF TRACT RD2B, ABACOA PLAT NO. 1 AS RECORDED IN PLAT BOOK 78, PAGES 145 THROUGH 163, PUBLIC RECORDS OF PALM BEACH COUNTY, FLORIDA, LYING IN SECTION 24, TOWNSHIP 41 SOUTH, RANGE 42 EAST, TOWN OF JUPITER, PALM BEACH COUNTY, FLORIDA
 JANUARY, 2001 SHEET 5 OF 5

189

STATE OF FLORIDA
 COUNTY OF PALM BEACH
 THIS PLAT WAS FILED FOR RECORD AT _____ M., THIS _____ DAY OF _____ 2001
 AND DULY RECORDED IN PLAT BOOK NO. _____ ON PAGE _____
 DOROTHY H. WILKEN,
 CLERK OF THE CIRCUIT COURT
 BY _____ D.C.

TRACT RD2A
 ABACOA PLAT NO. 1
 (P.B. 78, PAGES 145-163)

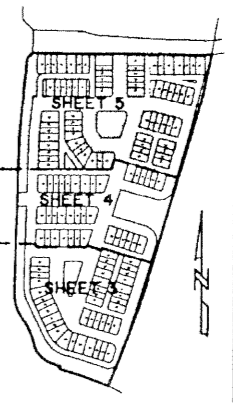
TRACT R47
 ABACOA PLAT NO. 1
 (P.B. 78, PAGES 145-163)

TRACT GW4
 ABACOA PLAT NO. 1
 (P.B. 78, PAGES 145-163)

TRACT GW5
 ABACOA PLAT NO. 1
 (P.B. 78, PAGES 145-163)

UNIVERSITY DRIVE

CENTRAL BOULEVARD
 TRACT B
 ABACOA PLAT NO. 1
 (P.B. 78, PAGES 145-163)

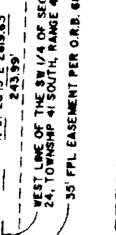
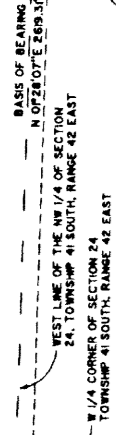
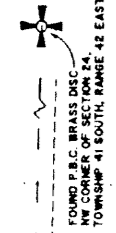


CURVE TABLE

NUMBER	RADIUS	DELTA ANGLE	ARC LENGTH	CHORD DIRECTION	CHORD LENGTH
C1	6.00	90°00'00"	9.42	N 45°00'00" E	6.49
C2	5.00	90°00'00"	7.85	N 45°00'00" E	5.70
C3	6.00	90°00'00"	9.42	N 45°00'00" E	6.49
C4	6.00	90°00'00"	9.42	N 45°00'00" E	6.49
C5	6.00	90°00'00"	9.42	N 45°00'00" E	6.49
C6	9.00	90°00'00"	12.57	N 45°00'00" E	8.81
C7	6.00	90°00'00"	9.42	S 45°00'00" E	6.49
C8	6.00	104°02'36"	14.53	S 37°58'42" E	12.61
C9	2.06	90°00'00"	3.24	S 59°02'36" W	2.92
C10	6.00	90°00'00"	9.42	S 30°57'24" E	6.49
C11	12.00	90°00'00"	19.20	S 30°07'00" E	17.22
C12	40.00	14°02'36"	9.80	S 82°58'42" E	9.78
C13	12.00	74°16'53"	15.56	N 52°51'34" E	14.40
C14	6.00	90°00'00"	9.42	S 29°16'53" E	6.49
C15	6.00	90°00'00"	9.42	N 60°43'07" E	6.49
C16	6.00	90°00'00"	9.42	N 29°16'53" W	6.49
C17	6.00	90°00'00"	9.42	N 60°43'07" E	6.49
C18	12.00	108°43'07"	22.14	S 37°08'26" E	19.15
C19	12.00	74°16'53"	15.56	N 62°51'34" E	14.49
C20	12.00	90°00'00"	19.20	S 30°07'00" E	17.22
C21	12.00	54°44'26"	14.46	N 62°57'47" W	13.03
C22	12.00	35°10'54"	7.38	N 17°57'47" W	7.27
C23	12.00	90°00'00"	18.85	N 45°00'00" E	16.97
C24	9.00	90°00'00"	14.14	S 45°00'00" E	12.75
C25	12.00	35°10'54"	7.38	S 17°57'47" E	7.27
C26	12.00	54°44'26"	14.46	S 62°57'47" E	13.03
C27	12.00	108°43'07"	22.14	S 37°08'26" E	19.15
C28	8.00	64°44'26"	7.64	S 62°57'47" E	7.36
C29	2.00	127°18'54"	4.57	N 27°23'15" E	5.65
C30	6.00	90°00'00"	9.42	N 45°00'00" W	6.49
C31	3.00	144°44'26"	7.38	N 72°23'15" E	5.72
C32	9.00	84°08'50"	13.22	N 47°55'45" E	12.04
C33	6.00	90°00'00"	9.42	N 45°00'00" E	6.49
C34	50.00	35°10'54"	30.77	S 17°57'47" E	30.29
C35	65.25	14°02'36"	15.99	S 82°58'42" E	15.95
C36	18.00	104°02'36"	32.69	N 37°58'42" W	28.38
C37	18.00	90°00'00"	23.56	N 45°00'00" E	21.21

Landmark Surveying & Mapping Inc.
 1850 Forest Hill Boulevard
 Ph. (561) 433-5405 Suite 100 W.P.B. Florida
 LB # 4396

OSCEOLA WOODS



MATCH TO SHEET 4

