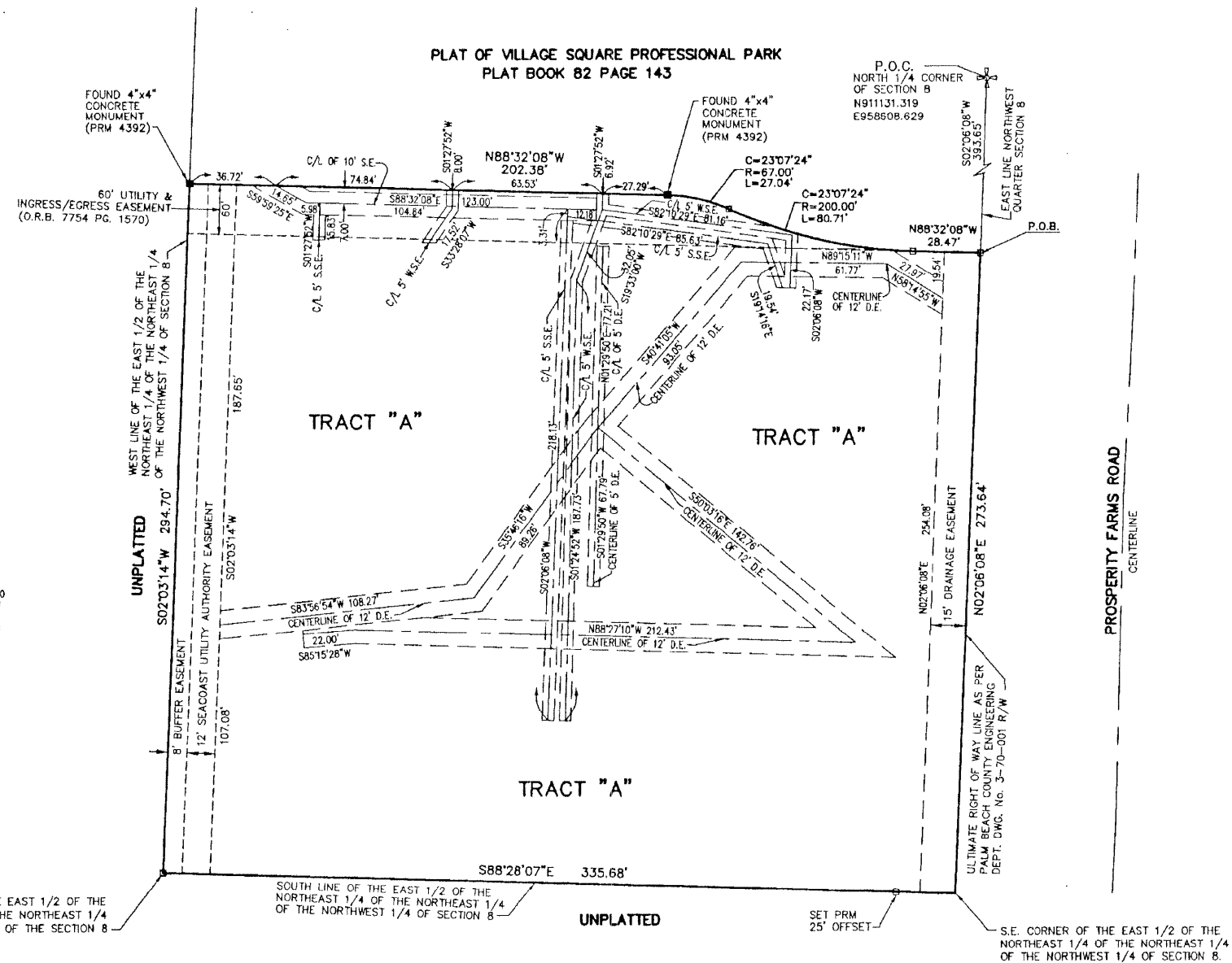


VILLAGE SQUARE PLAT No. 2

LYING IN SECTION 8, TOWNSHIP 42 SOUTH, RANGE 43 EAST,
CITY OF PALM BEACH GARDENS, PALM BEACH COUNTY, FLORIDA

MAY 2001 SHEET 2 OF 2



- NOTES:
- BEARINGS SHOWN HEREON ARE REFERENCED TO A BEARING OF S02°06'08"W ALONG THE EAST LINE OF THE NORTHWEST QUARTER OF SECTION 8.
 - PERMANENT REFERENCE MONUMENT (P.R.M.) No. "LB6473" SET, UNLESS NOTED OTHERWISE.
 - NO BUILDINGS OF ANY KIND OF CONSTRUCTION OR TREES OR SHRUBS SHALL BE PLACED ON ANY EASEMENT WITHOUT PRIOR WRITTEN APPROVAL OF ALL EASEMENT BENEFICIARIES AND ALL APPLICABLE CITY OR COUNTY APPROVALS OR PERMITS AS REQUIRED FOR SUCH ENCROACHMENTS.
 - COORDINATES SHOWN ARE GRID.
DATUM: NAD 83, 1990 ADJUSTMENT
ZONE: FLORIDA EAST
LINEAR UNITS: US SURVEY FOOT
COORDINATE SYSTEM: 1983 STATE PLANE TRANSVERSE MERCATOR PROJECTION
ALL DISTANCES ARE GROUND
SCALE FACTOR: 1.0000460 GROUND DISTANCE x SCALE FACTOR = GRID DISTANCE
ROTATION EQUATION: NONE
 - RADIAL BEARINGS ARE NOTED AT ALL NON-TANGENT CURVES.
 - PLAT AREA: 2.23 ACRES, MORE OR LESS.

ABBREVIATIONS

P.O.C. - POINT OF COMMENCEMENT	R - RADIUS
P.O.B. - POINT OF BEGINNING	C - CENTRAL ANGLE
PRM - PERMANENT REFERENCE MONUMENT	L - ARC LENGTH
U.E. - UTILITY EASEMENT	O.R.B. - OFFICIAL RECORD BOOK
D.E. - DRAINAGE EASEMENT	R/W - RIGHT-OF-WAY
W.S.E. - WATER SERVICE EASEMENT	C/L - CENTERLINE
S.E. - SANITARY EASEMENT	
S.S.E. - SANITARY SERVICE EASEMENT	

BROWN & PHILLIPS, INC.
PROFESSIONAL SURVEYING SERVICES
CERTIFICATE OF AUTHORIZATION # LB 6473
3970 RCA BOULEVARD, SUITE 7005, P.B.G. FLORIDA 33410 561-775-9337, 626-7866 FAX

THIS INSTRUMENT PREPARED BY:
JOHN E. PHILLIPS, II
PROFESSIONAL SURVEYOR AND MAPPER
STATE OF FLORIDA No.4826

VILLAGE SQUARE
PLAT No. 2

DRAWN: JAO	PROJ. NO. 01-021
CHECKED: JEP:III	SCALE: 1"=30'
FIELD BOOK:	DATE: 4/24/01
PAGES:	SHEET 2 OF 2