

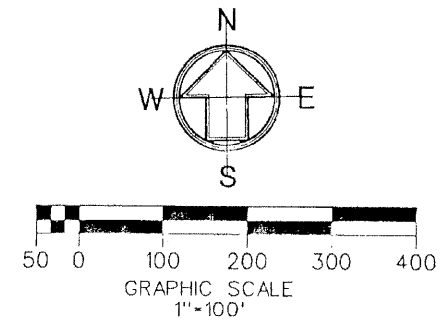
EQUESTRIAN CLUB

A PLANNED UNIT DEVELOPMENT
 A PORTION OF SECTION 22 AND SECTION 23,
 TOWNSHIP 44 SOUTH, RANGE 41 EAST, VILLAGE OF WELLINGTON,
 PALM BEACH COUNTY, FLORIDA

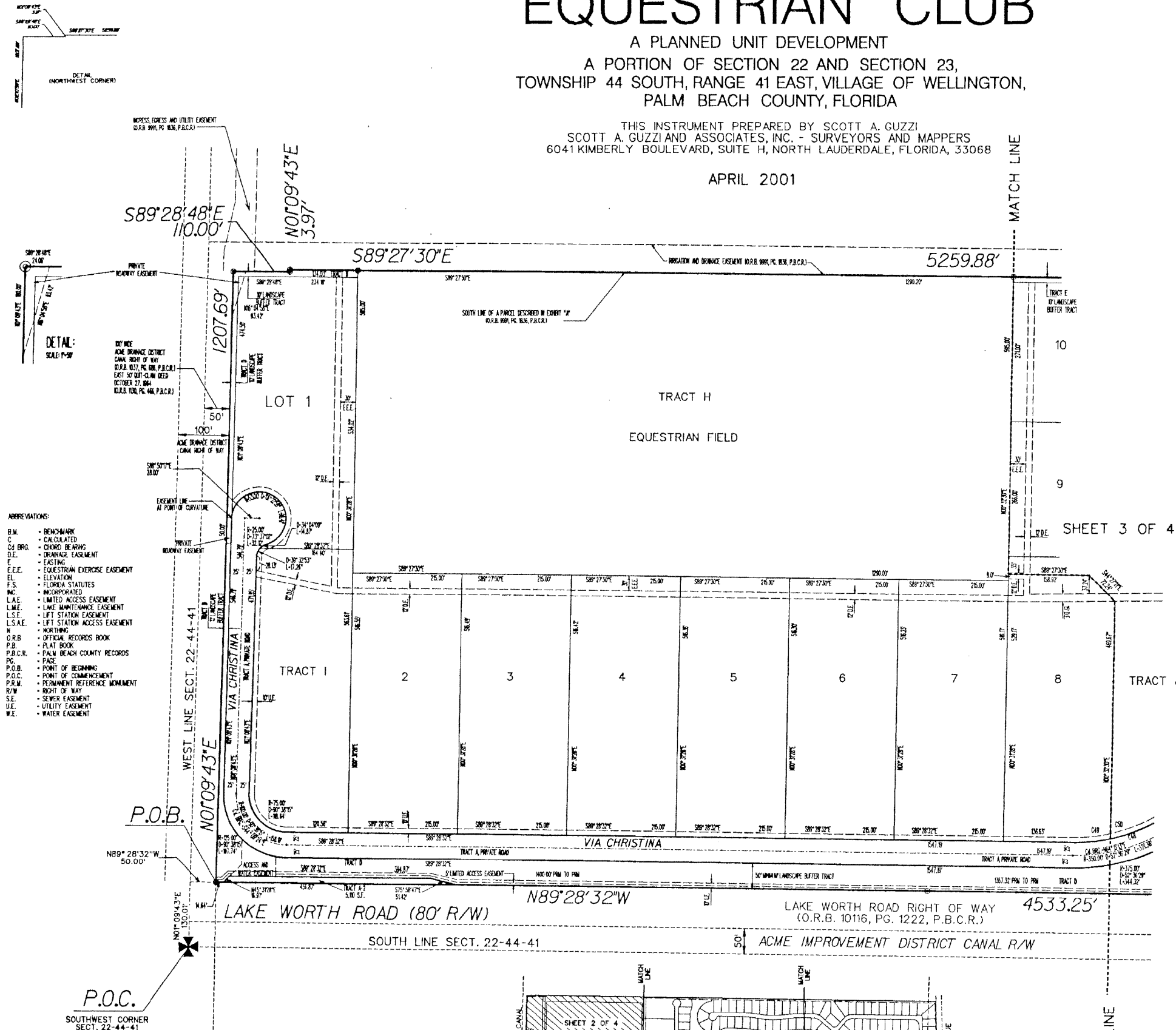
THIS INSTRUMENT PREPARED BY SCOTT A. GUZZI
 SCOTT A. GUZZI AND ASSOCIATES, INC. - SURVEYORS AND MAPPERS
 6041 KIMBERLY BOULEVARD, SUITE H, NORTH LAUDERDALE, FLORIDA, 33068

APRIL 2001

16



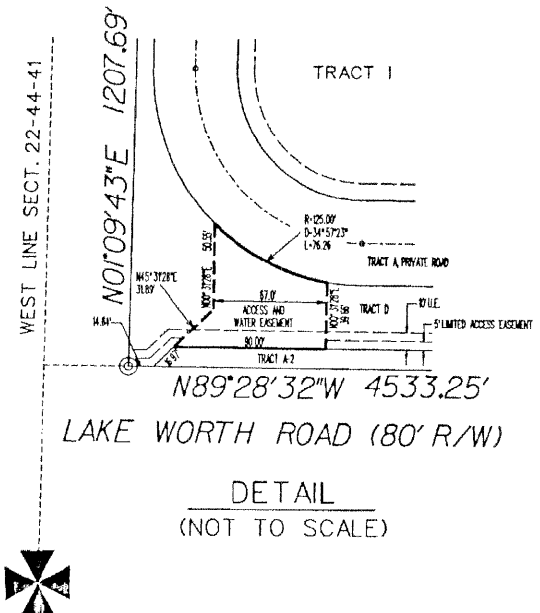
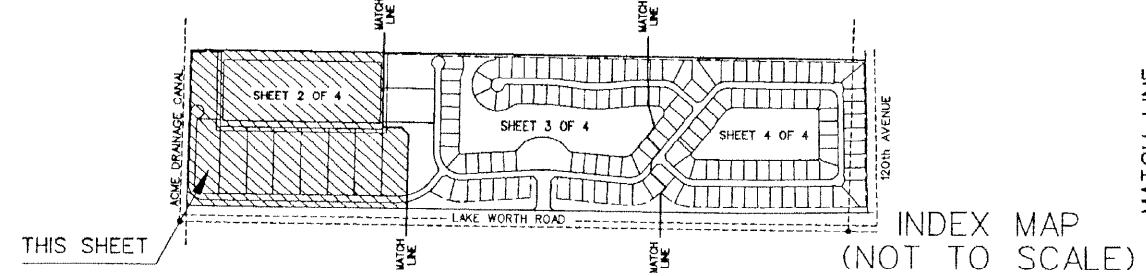
SHEET 2 OF 4



- ABBREVIATIONS:
- B.M. - BENCHMARK
 - C - CALCULATED
 - C.D. E.P.C. - CHORD BEARING
 - D.E. - DRAINAGE EASEMENT
 - F - FACE
 - E.E.E. - EQUESTRIAN EXERCISE EASEMENT
 - EL. - ELEVATION
 - F.S. - FLORIDA STATUTES
 - INC. - INCORPORATED
 - L.A.E. - LIMITED ACCESS EASEMENT
 - L.M.E. - LAKE MAINTENANCE EASEMENT
 - L.S.E. - LIFT STATION EASEMENT
 - L.S.A.E. - LIFT STATION ACCESS EASEMENT
 - N - NORTHING
 - O.R.B. - OFFICIAL RECORDS BOOK
 - P.B. - PLAT BOOK
 - P.B.C.R. - PALM BEACH COUNTY RECORDS
 - PG. - PAGE
 - P.O.B. - POINT OF BEGINNING
 - P.O.C. - POINT OF COMMENCEMENT
 - P.R.M. - PERMANENT REFERENCE MONUMENT
 - R/W - RIGHT OF WAY
 - S.E. - SEWER EASEMENT
 - U.E. - UTILITY EASEMENT
 - W.E. - WATER EASEMENT

CURVE TABLE

| NUMBER | RADIUS | DELTA | LENGTH | TANGENT | CHORD |
|--------|---------|-----------|---------|---------|---------|
| C48 | 125.00' | 52°30'22" | 298.41' | 160.65' | 288.04' |
| C49 | 125.00' | 17°07'05" | 73.84' | 37.00' | 73.67' |
| C50 | 125.00' | 34°35'21" | 224.57' | 76.80' | 220.13' |



SCOTT A. GUZZI & ASSOC., INC.
 Surveyors and Mappers
 6041 KIMBERLY BOULEVARD
 SUITE H
 NORTH LAUDERDALE, FLORIDA 33068

EQUESTRIAN CLUB