

BAYWINDS R.P.D. PLAT NO. 6

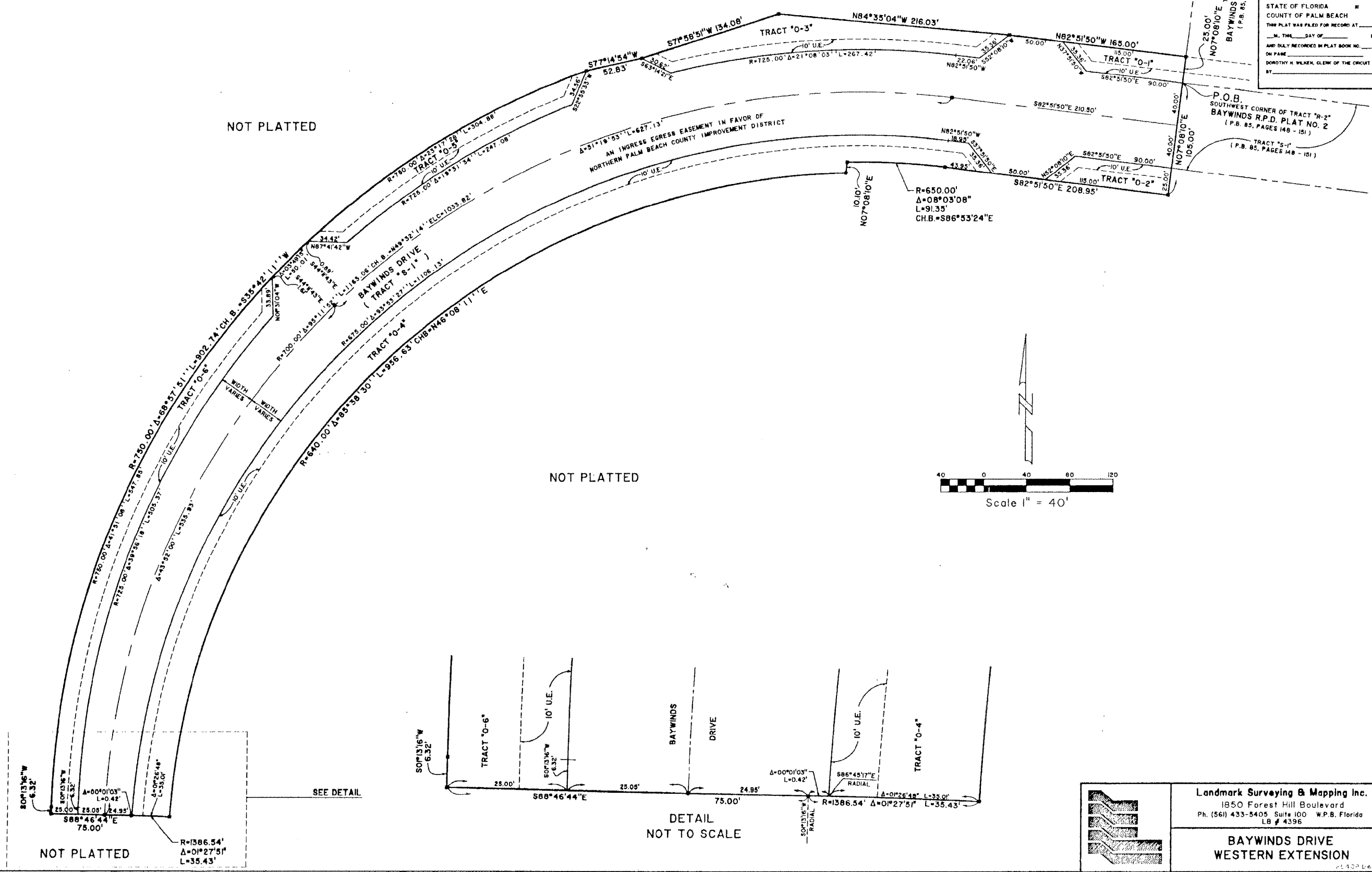
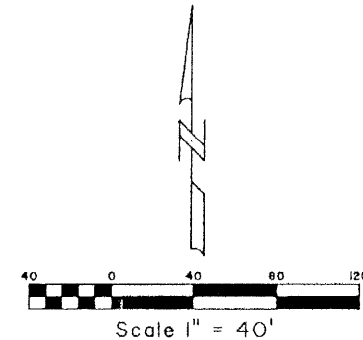
LYING IN SECTION 19, TOWNSHIP 43 SOUTH, RANGE 42 EAST,
CITY OF WEST PALM BEACH, PALM BEACH COUNTY, FLORIDA.
SHEET 2 OF 2
MAY 2001

50

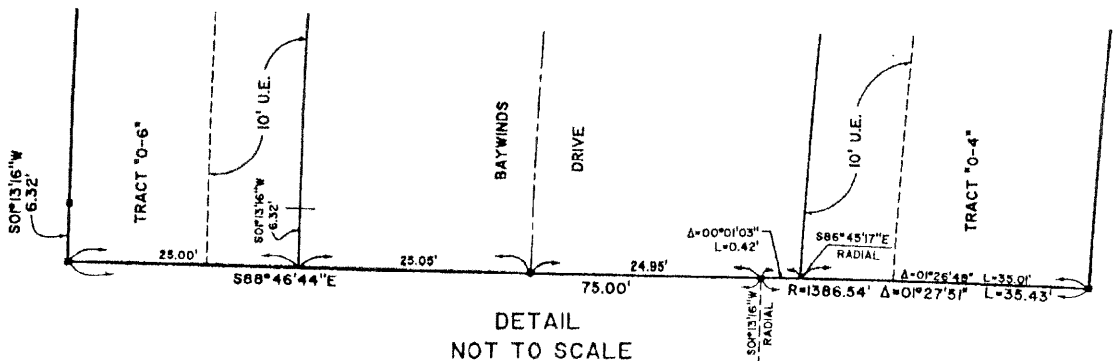
STATE OF FLORIDA
COUNTY OF PALM BEACH
THIS PLAT WAS FILED FOR RECORD AT _____
ON THE _____ DAY OF _____ 2001
AND DULY RECORDED IN PLAT BOOK NO. _____
ON PAGE _____
DOROTHY H. WILKER, CLERK OF THE CIRCUIT COURT
BY _____

NOT PLATTED

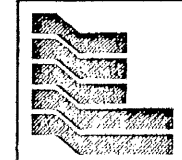
NOT PLATTED



SEE DETAIL



NOT PLATTED



Landmark Surveying & Mapping Inc.
1850 Forest Hill Boulevard
Ph. (561) 433-5405 Suite 100 W.P.B. Florida
LB # 4396

BAYWINDS DRIVE
WESTERN EXTENSION