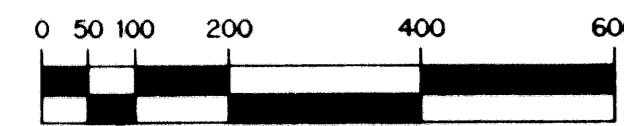


SUSSMAN AGR - P.U.D.

SUSSMAN - PLAT FIVE

A PARCEL OF LAND LYING WITHIN THE NORTH HALF (1/2) OF SECTION 13, TOWNSHIP 45 SOUTH, RANGE 41 EAST LYING IN PALM BEACH COUNTY, FLORIDA.

SHEET 2 OF 2 JANUARY, 2001



SCALE: 1" = 200'

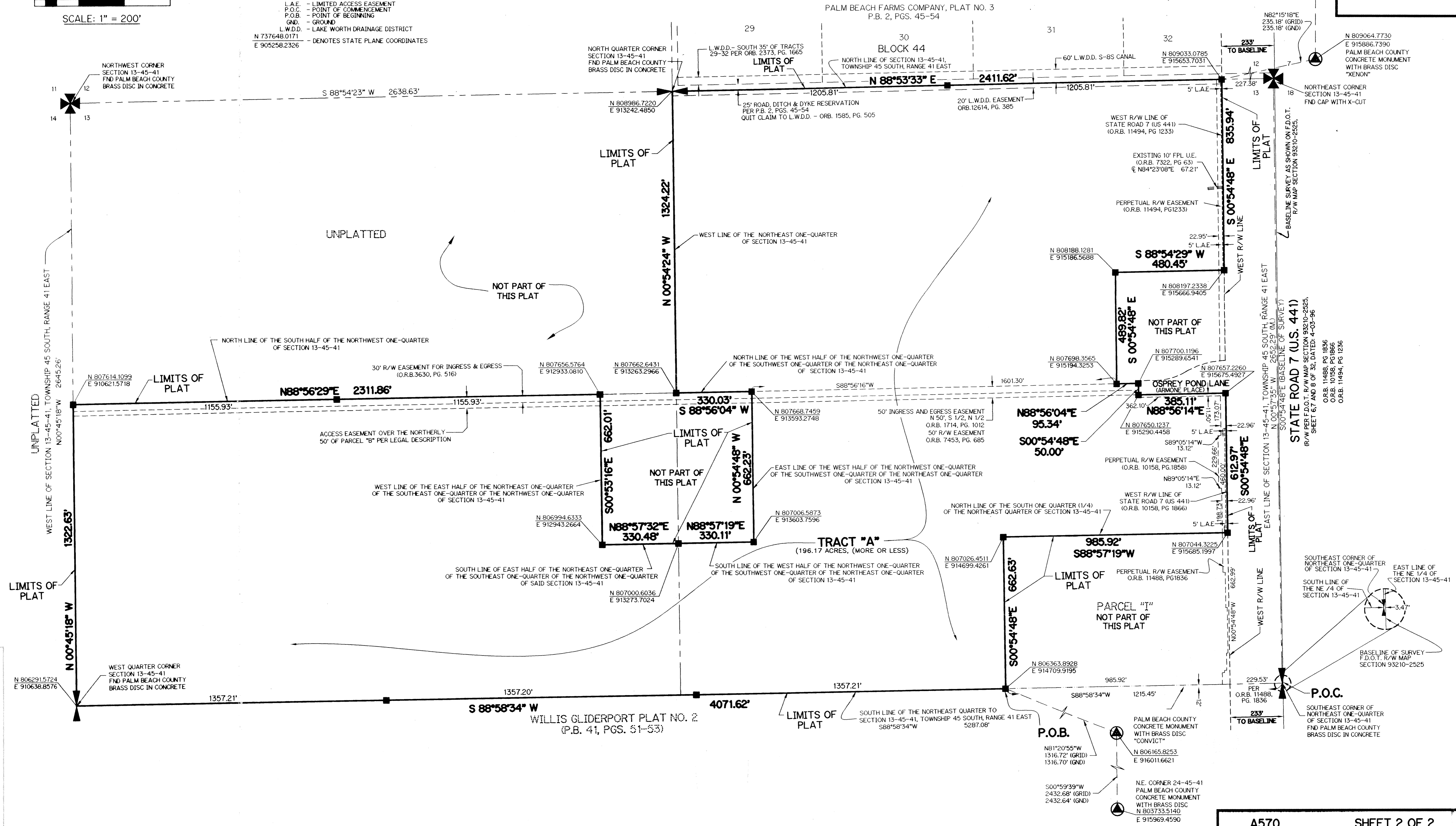
LEGEND:

- - SET PERMANENT REFERENCE MONUMENT, PSM #6674
- ⊙ - CENTERLINE
- D.B. - DEED BOOK
- D.E. - DRAINAGE EASEMENT
- N.T.S. - NOT TO SCALE
- O.R.B. - OFFICIAL RECORD BOOK
- P.B. - PLAT BOOK
- P.G.S. - PAGES
- P.S.M. - PROFESSIONAL SURVEYOR AND MAPPER
- R/W - RIGHT-OF-WAY
- U.E. - UTILITY EASEMENT
- L.A.E. - LIMITED ACCESS EASEMENT
- P.O.C. - POINT OF COMMENCEMENT
- P.O.B. - POINT OF BEGINNING
- GND. - GROUND
- L.W.D.D. - LAKE WORTH DRAINAGE DISTRICT
- N 737648.0171 E 905258.2326 - DENOTES STATE PLANE COORDINATES

THIS INSTRUMENT PREPARED BY
 PERRY C. WHITE, P.S.M. 4213, STATE OF FLORIDA
 LAWSON, NOBLE AND WEBB, INC.
 ENGINEERS PLANNERS SURVEYORS
 420 COLUMBIA DRIVE
 WEST PALM BEACH, FLORIDA 33409
 LB-6674

NOTE:

COORDINATES SHOWN ARE GRID COORDINATES
 DATUM = NAD 83 (1990 ADJUSTMENT)
 ZONE = FLORIDA EAST ZONE
 LINEAR UNIT = U.S. SURVEY FEET
 COORDINATE SYSTEM 1983 STATE PLANE
 TRANSVERSE MERCATOR PROJECTION
 ALL DISTANCES ARE GROUND
 SCALE FACTOR = 1.0000168
 N 88°53'37" E (PLAT BEARING)
 N 88°53'55" E (GRID BEARING)
 ROTATED 00°00'22" CLOCKWISE (PLAT TO GRID)



SUSMAN AGR - PLAT FOUR
 SHEET 58
 TOWNSHIP 45 SOUTH, RANGE 41 EAST
 SECTION 13, 14, 15, 16, 17, 18, 19, 20, 21, 22, 23, 24, 25, 26, 27, 28, 29, 30, 31, 32, 33, 34, 35, 36, 37, 38, 39, 40, 41, 42, 43, 44, 45
 TAZ 742, Sussman AGR-PLAT FIVE

