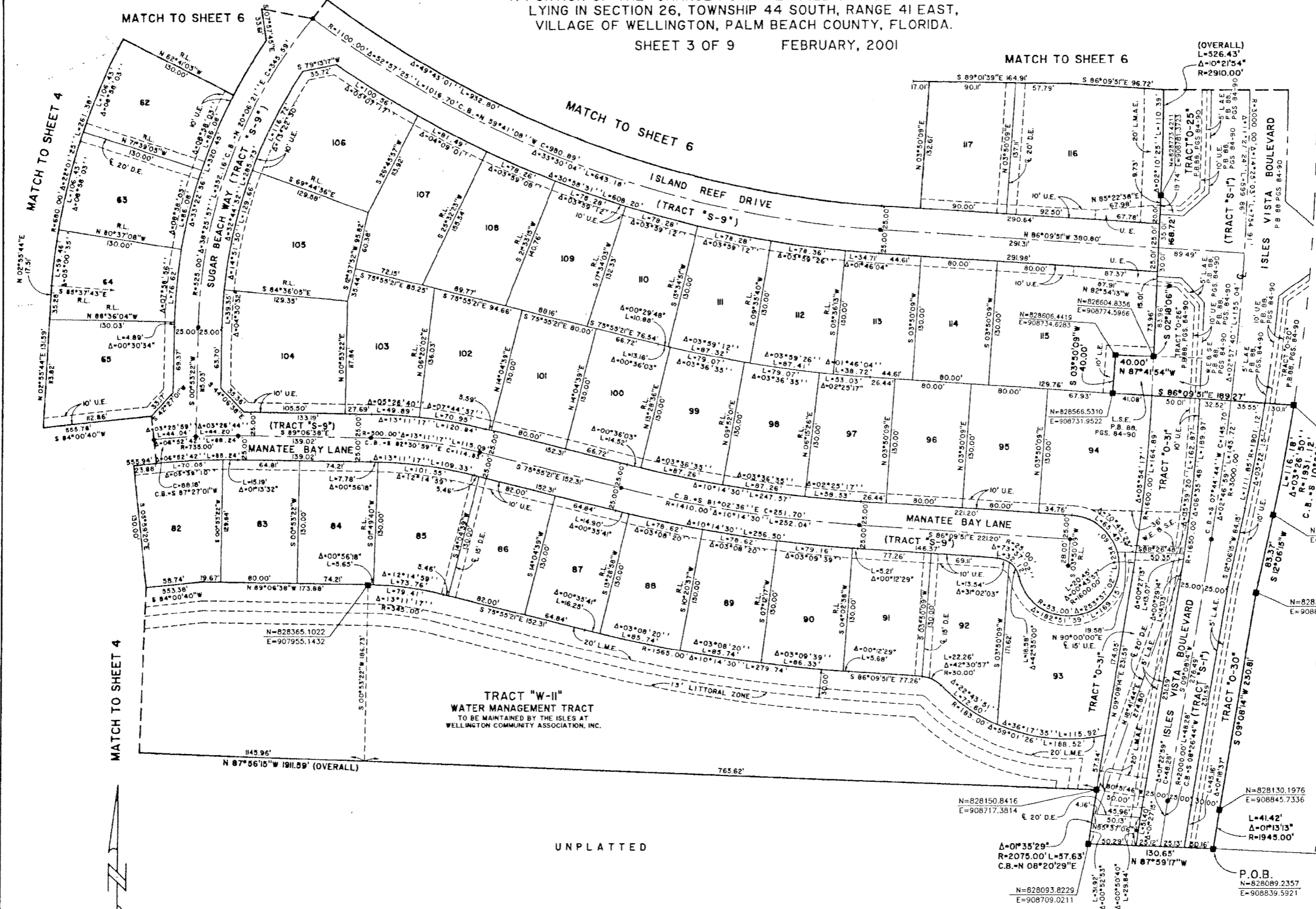


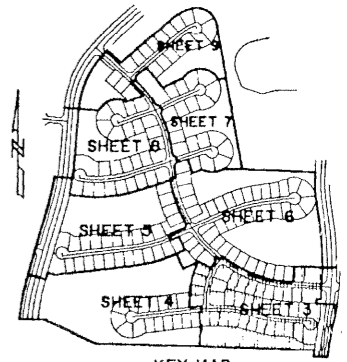
ISLES AT WELLINGTON PLAT IV

A PORTION OF THE ORANGE POINT PLANNED UNIT DEVELOPMENT
LYING IN SECTION 26, TOWNSHIP 44 SOUTH, RANGE 41 EAST,
VILLAGE OF WELLINGTON, PALM BEACH COUNTY, FLORIDA.

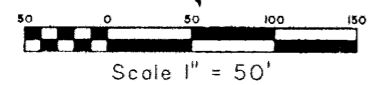
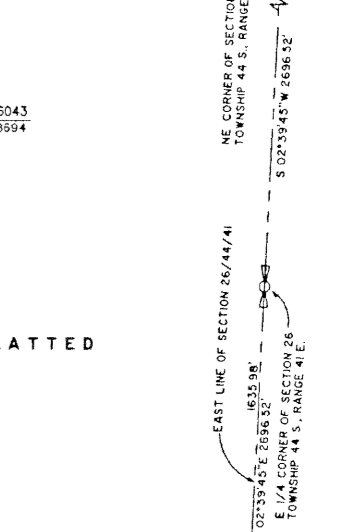
SHEET 3 OF 9 FEBRUARY, 2001



STATE OF FLORIDA SS
 COUNTY OF PALM BEACH
 THIS PLAT WAS FILED FOR RECORD AT
 — M. THIS — DAY OF — 2001
 AND DULY RECORDED IN PLAT BOOK NO. —
 ON PAGE —
 DOROTHY H. WALKER,
 CLERK OF THE CIRCUIT COURT
 BY: _____ D.C.



LAKE WORTH ROAD
 (OR.B. 6320, PAGES 1622-1631)
 NORTH LINE OF SECTION 26/44/41
 N 88°27'36"E
 E 908920.8012

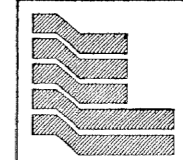


TRACT "W-II"
 WATER MANAGEMENT TRACT
 TO BE MAINTAINED BY THE ISLES AT
 WELLINGTON COMMUNITY ASSOCIATION, INC.

UNPLATTED

UNPLATTED

COORDINATE NOTE:
 STATE PLANE COORDINATES SHOWN ARE GRID DATUM, NAD 83 1990
 ADJUSTMENT, FLORIDA EAST ZONE, COORDINATE SYSTEM 1983 STATE
 PLANE, TRANSVERSE MERCATOR PROJECTION
 LINEAR UNIT = US SURVEY FEET
 ALL DISTANCES ARE GROUND
 SCALE FACTOR = 1.0000139
 GROUND DISTANCE X SCALE FACTOR = GRID DISTANCE
 BEARINGS AS SHOWN HEREON ARE GRID DATUM, NAD 83 1990
 ADJUSTMENT, FLORIDA EAST ZONE.



Landmark Surveying & Mapping Inc.
 1850 Forest Hill Boulevard
 Ph. (561) 433-5405 Suite 100 W.P.B. Florida
 LB # 4396

ISLES AT WELLINGTON PLAT IV