

TIVOLI RESERVE PLANNED UNIT DEVELOPMENT

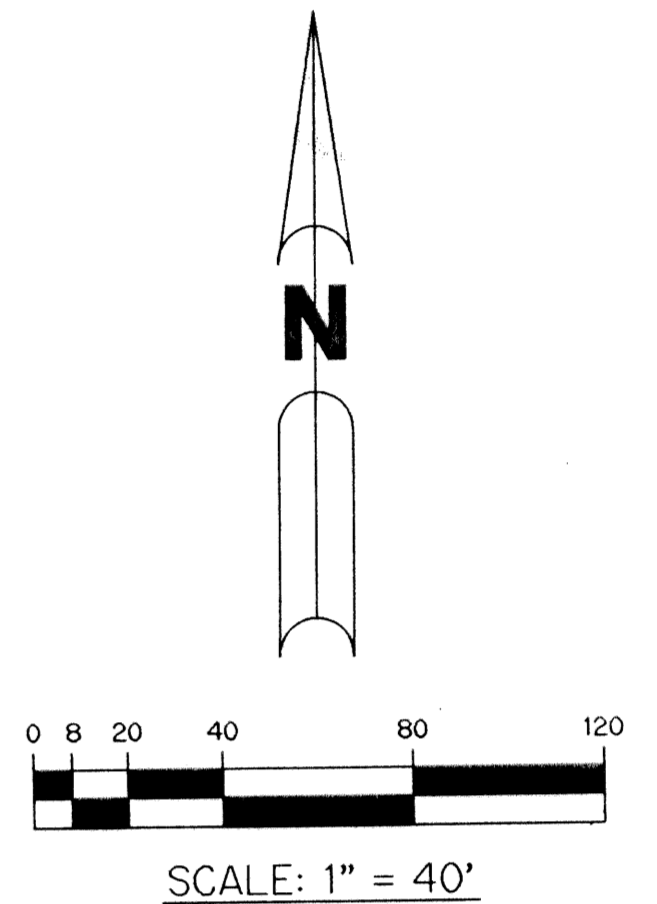
TIVOLI RESERVE

BEING A REPLAT OF ALL OF TRACTS 10 THROUGH 14, 18 THROUGH 23 AND A PORTION OF TRACTS 15, 16, 17 & 24, BLOCK 58, TOGETHER WITH A PORTION OF THE NORTH ONE-HALF OF THE 30 FOOT RIGHT-OF-WAY ADJOINING THE SOUTH LINE OF SAID TRACTS 17 THROUGH 24, BLOCK 58, PALM BEACH FARMS COMPANY PLAT NO. 3, AS RECORDED IN PLAT BOOK 2, PAGES 45 THROUGH 54, OF THE PUBLIC RECORDS OF PALM BEACH COUNTY FLORIDA AND LYING IN SECTIONS 32 AND 33, TOWNSHIP 45 SOUTH, RANGE 42 EAST, PALM BEACH COUNTY, FLORIDA.

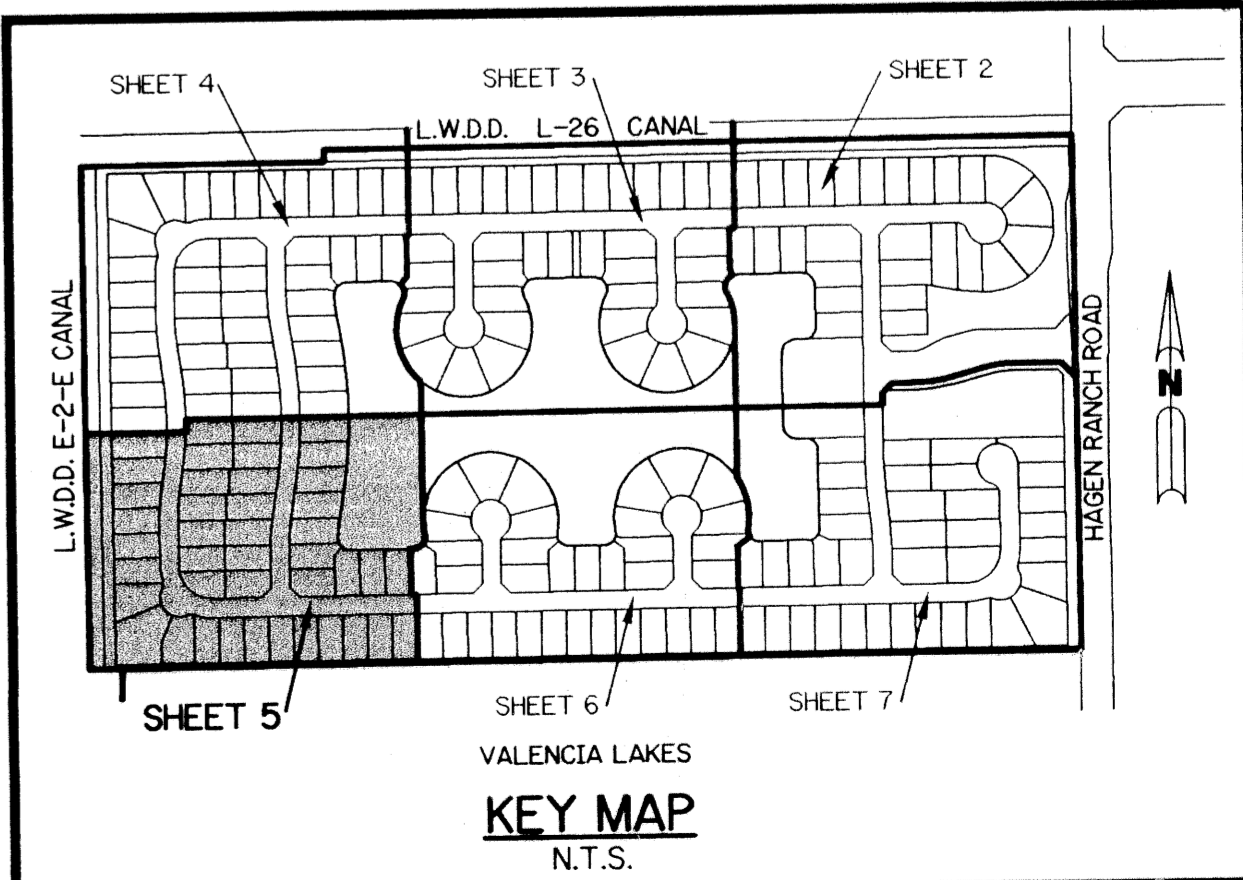
SHEET 5 OF 7 JULY, 2000

THIS INSTRUMENT PREPARED BY
WILBUR F. DIVINE, P.S.M. 4190, STATE OF FLORIDA
LAWSON, NOBLE AND WEBB, INC., LB-6674
ENGINEERS PLANNERS SURVEYORS
420 COLUMBIA DRIVE, SUITE 110
WEST PALM BEACH, FLORIDA

NOTE:
COORDINATES SHOWN ARE GRID COORDINATES
DATUM = NAD 83 (1998 ADJUSTMENT)
ZONE = FLORIDA EAST ZONE
LINEAR UNIT = U.S. SURVEY FEET
COORDINATE SYSTEM 1983 STATE PLANE
TRANSVERSE MERCATOR PROJECTION
ALL DISTANCES ARE GROUND
SCALE FACTOR = 1.0000269
NO ROTATION PLAT BEARING = GRID BEARING



- LEGEND:**
- - SET PERMANENT REFERENCE MONUMENT, LB-6674
 - - PERMANENT CONTROL POINT, PSM #4190
 - Δ - DELTA ANGLE
 - B.E. - BUFFER EASEMENT
 - C - CENTERLINE
 - C.B. - CHORD BEARING
 - C.H. - CHORD LENGTH
 - D.B. - DEED BOOK
 - D.E. - DRAINAGE EASEMENT
 - L - ARC LENGTH
 - L.A.E. - LIMITED ACCESS EASEMENT
 - L.M.A.E. - LAKE MAINTENANCE ACCESS EASEMENT
 - L.M.E. - LAKE MAINTENANCE EASEMENT
 - L.W.D.D. - LAKE WORTH DRAINAGE DISTRICT
 - NR - NOT RADIAL
 - N.T.S. - NOT TO SCALE
 - O.R.B. - OFFICIAL RECORD BOOK
 - P.B. - PLAT BOOK
 - P.B.F. - PALM BEACH FARMS COMPANY PLAT NO. 3 (P.B. 2, PG. 50)
 - PAGES - PAGES
 - P.S.M. - PROFESSIONAL SURVEYOR AND MAPPER
 - R - RADIUS
 - R/W - RIGHT-OF-WAY
 - S.T. - SURVEY TIE
 - U.E. - UTILITY EASEMENT
 - N 814602.8657 - DENOTES STATE PLANE COORDINATES E 785753.1680



SUBDIVISION Tivoli Reserve
PAGE 90
FILED MAP # 100
ZONING PLU 500
7-19-CUB-3345
451 Tivoli Reserve Planned Unit Development

THE SOUTH 15 FEET OF TRACTS 17-24
QUIT CLAIMED FROM WHITWORTH TO SINCLAIR
(O.R.B. 8777, PG. 1507)

VALENCIA LAKES- PARCEL 'C' REPLAT
(P.B. 79, PGS. 158-159)

FOUND PRM, PLS #4213
N 791562.6016
E 927781.8507