

# TUSCANY - PARCEL A/B REPLAT

A PLANNED UNIT DEVELOPMENT BEING A PART CIBA GEIGY PUD  
 A REPLAT OF TRACTS A, B, C, D, E, G, H, I, J, K, L, M, N, O, P, Q, R, S, T, U, V, W, X, Y, Z  
 AS RECORDED IN PLAT BOOK 89, PAGES 143 THROUGH 178 OF THE PUBLIC RECORDS  
 OF PALM BEACH COUNTY, FLORIDA LYING IN SECTIONS 20 AND 21, TOWNSHIP 45 SOUTH, RANGE 42 EAST,  
 PALM BEACH COUNTY, FLORIDA

THIS INSTRUMENT PREPARED BY  
 DAVID P. LINDLEY

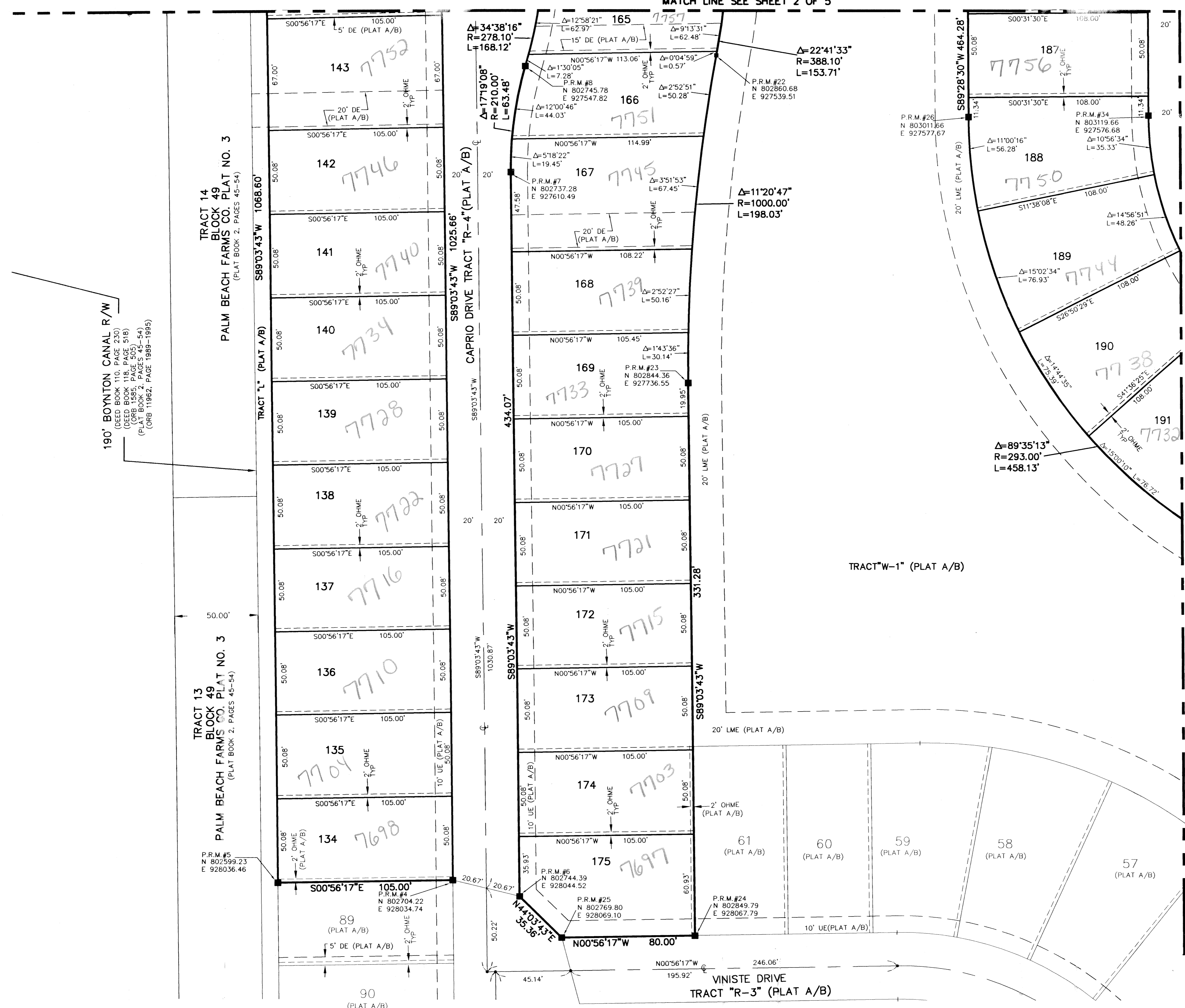
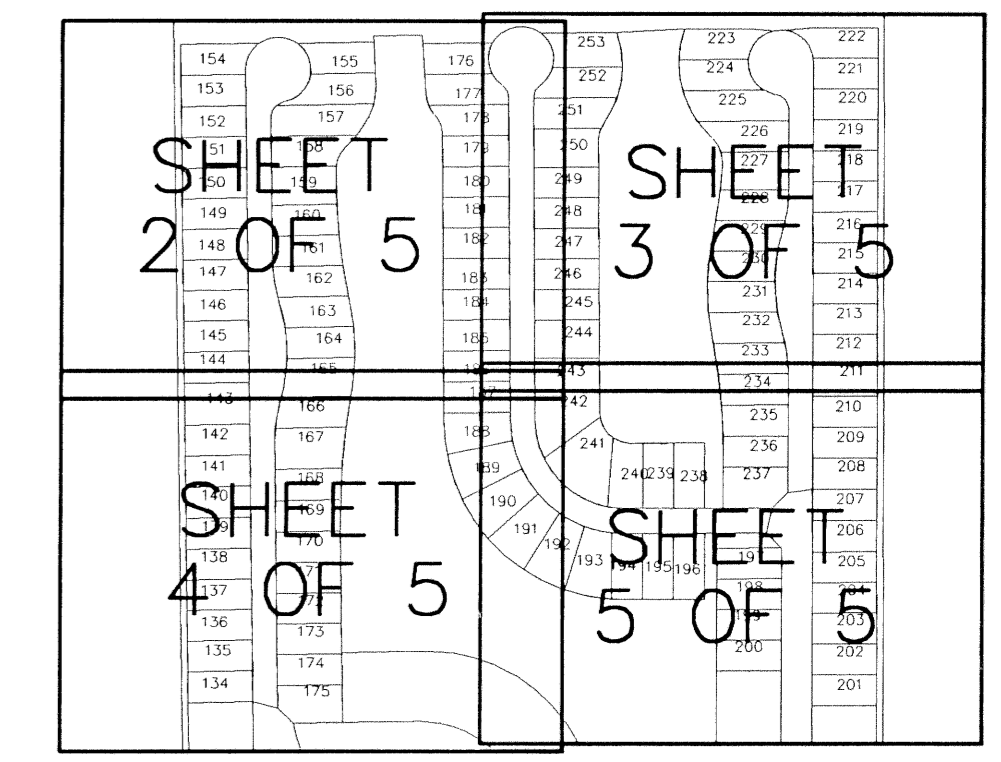
OF  
**CAULFIELD and WHEELER, INC.**  
 SURVEYORS - ENGINEERS - PLANNERS  
 7301-A WEST PALMETTO PARK ROAD, SUITE 100A  
 BOCA RATON, FLORIDA 33433 - (561)392-1991  
 JANUARY - 2001

**NOTES**  
**COORDINATES, BEARINGS AND DISTANCES**  
 COORDINATES SHOWN ARE GRID  
 DATUM = NAD 83 1990 ADJUSTMENT  
 ZONE = FLORIDA EAST  
 LINEAR UNIT = US SURVEY FEET  
 COORDINATE SYSTEM 1983 STATE PLANE  
 TRANSVERSE MERCATOR PROJECTION  
 ALL DISTANCES ARE GROUND  
 SCALE FACTOR = 1.0000287  
 GROUND DISTANCE X SCALE FACTOR = GRID DISTANCE  
 BEARINGS AS SHOWN HEREON ARE GRID DATUM, NAD 83 1990  
 ADJUSTMENT, FLORIDA EAST ZONE.

**96**

STATE OF FLORIDA  
 COUNTY OF PALM BEACH  
 THIS PLAT WAS FILED FOR  
 RECORD AT \_\_\_\_\_ M.  
 THIS \_\_\_\_\_ DAY OF \_\_\_\_\_  
 A.D. 2001 AND DULY RECORDED  
 IN PLAT BOOK \_\_\_\_\_ ON  
 PAGES \_\_\_\_\_ AND \_\_\_\_\_  
 DOROTHY H. WILKEN  
 CLERK CIRCUIT COURT  
 BY: \_\_\_\_\_  
 DEPUTY CLERK

SHEET 4 OF 5



MATCH LINE SEE SHEET 5 OF 5

*Tuscany - Parcel A/B Replat*  
 91  
 185A  
 CIBA GEIGY PUD  
 334137  
 950 Ciba Geigy PUD  
 170 NAME