

SATURNIA ISLES - PLAT ONE

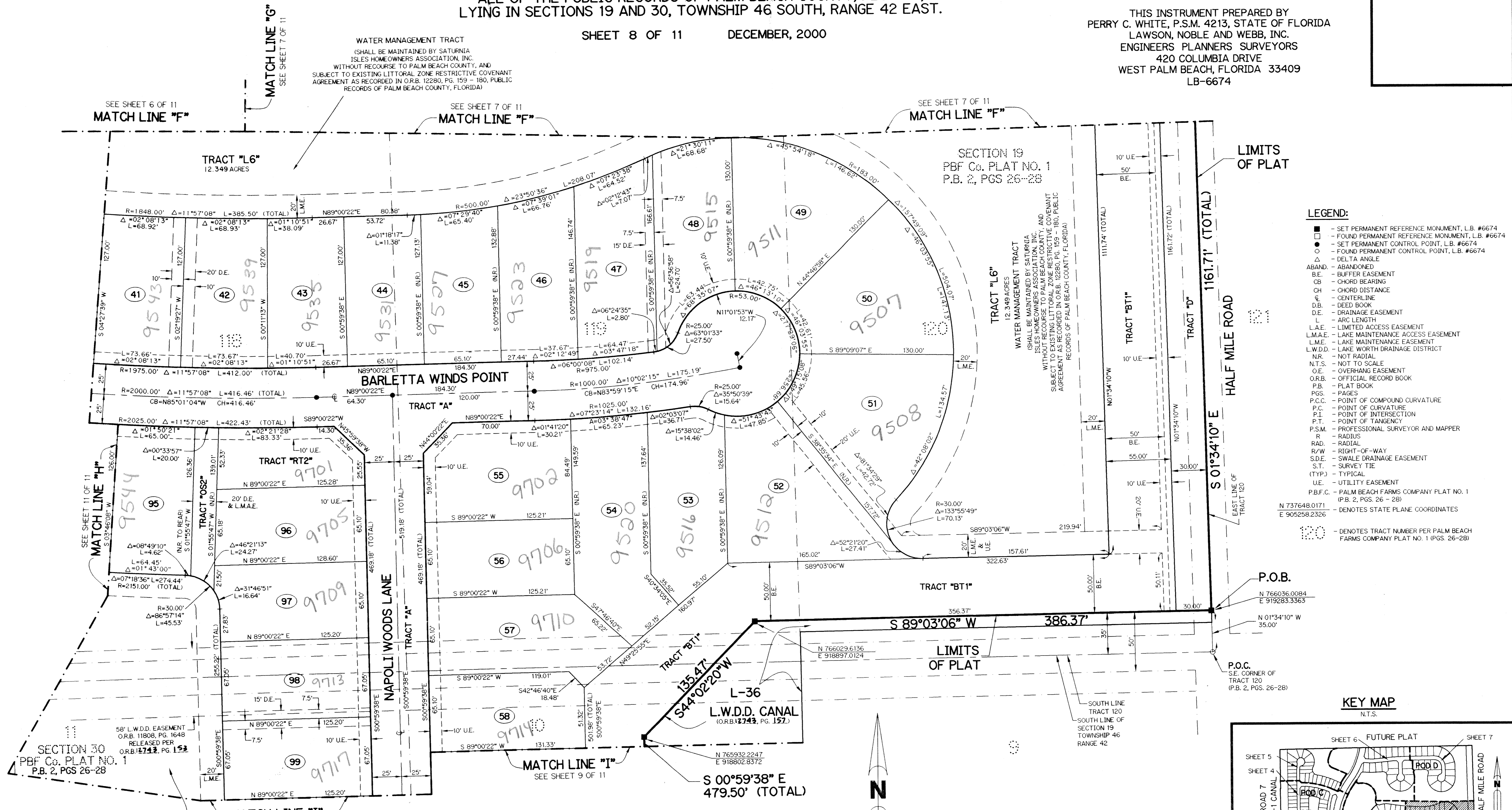
BEING A REPLAT OF TRACTS 113 THROUGH 120 AND A PORTION OF TRACTS 105 THROUGH 108, SECTION 19, TOWNSHIP 46 SOUTH, RANGE 42 EAST AND A PORTION OF TRACTS 10 THROUGH 16, SECTION 30, TOWNSHIP 46 SOUTH, RANGE 42 EAST, PALM BEACH FARMS COMPANY PLAT NO. 1 AS RECORDED IN PLAT BOOK 2, PAGES 26 THROUGH 28 TOGETHER WITH BLOCKS 2 THROUGH 5 AND A PORTION OF BLOCKS 1 AND 6, MILLER'S PARK UNIT 2 AS RECORDED IN PLAT BOOK 4, PAGE 75 TOGETHER WITH ROAD RIGHT-OF-WAY ABANDONED PER OFFICIAL RECORD BOOK 12389, PAGE 1259

ALL OF THE PUBLIC RECORDS OF PALM BEACH COUNTY, FLORIDA, LYING IN SECTIONS 19 AND 30, TOWNSHIP 46 SOUTH, RANGE 42 EAST.

SHEET 8 OF 11 DECEMBER, 2000

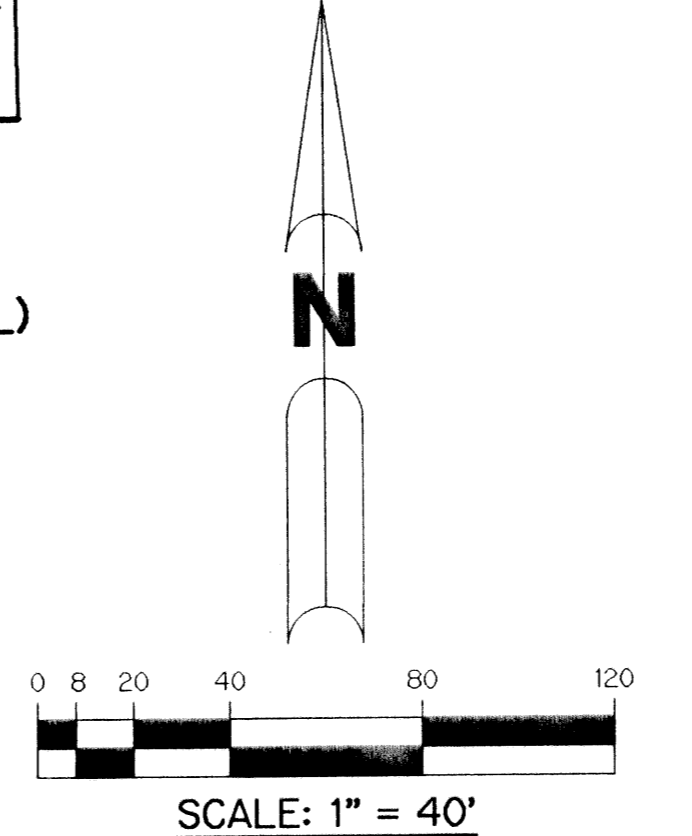
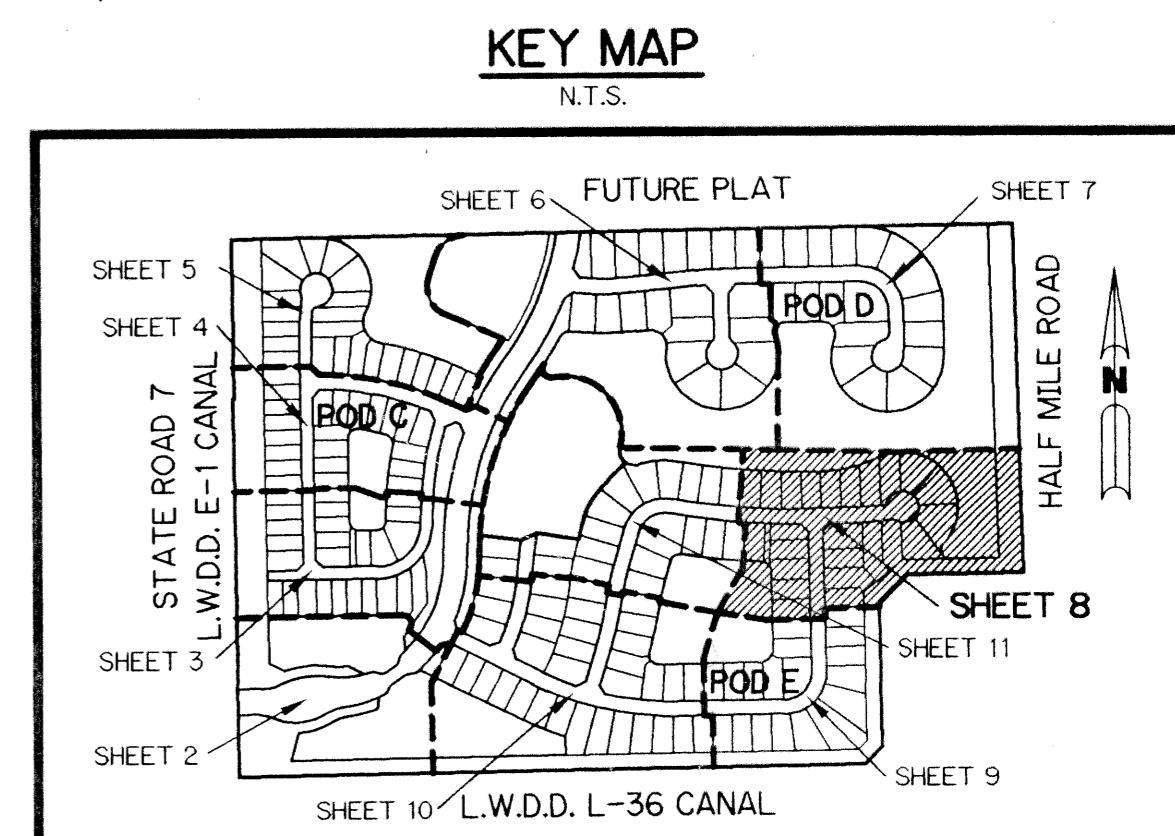
THIS INSTRUMENT PREPARED BY
PERRY C. WHITE, P.S.M. 4213, STATE OF FLORIDA
LAWSON, NOBLE AND WEBB, INC.
ENGINEERS PLANNERS SURVEYORS
420 COLUMBIA DRIVE
WEST PALM BEACH, FLORIDA 33409
LB-6674

WATER MANAGEMENT TRACT
(SHALL BE MAINTAINED BY SATURNIA ISLES HOMEOWNERS ASSOCIATION, INC. WITHOUT RECOURSE TO PALM BEACH COUNTY, AND SUBJECT TO EXISTING LITTORAL ZONE RESTRICTIVE COVENANT AGREEMENT AS RECORDED IN O.R.B. 12280, PG. 159 - 180, PUBLIC RECORDS OF PALM BEACH COUNTY, FLORIDA)



- LEGEND:**
- - SET PERMANENT REFERENCE MONUMENT, L.B. #6674
 - - FOUND PERMANENT REFERENCE MONUMENT, L.B. #6674
 - - SET PERMANENT CONTROL POINT, L.B. #6674
 - - FOUND PERMANENT CONTROL POINT, L.B. #6674
 - Δ - DELTA ANGLE
 - ABAND. - ABANDONED
 - BE - BUFFER EASEMENT
 - CB - CHORD BEARING
 - CH - CHORD DISTANCE
 - C - CENTERLINE
 - DE - DEED BOOK
 - DE - DRAINAGE EASEMENT
 - L - ARC LENGTH
 - L.A.E. - LIMITED ACCESS EASEMENT
 - L.M.A.E. - LAKE MAINTENANCE ACCESS EASEMENT
 - L.M.E. - LAKE MAINTENANCE EASEMENT
 - L.W.D.D. - LAKE WORTH DRAINAGE DISTRICT
 - NR - NOT RADIAL
 - N.T.S. - NOT TO SCALE
 - O.E. - OVERHANG EASEMENT
 - O.R.B. - OFFICIAL RECORD BOOK
 - P.B. - PLAT BOOK
 - PGS. - PAGES
 - P.C.C. - POINT OF COMPOUND CURVATURE
 - P.C. - POINT OF CURVATURE
 - P.I. - POINT OF INTERSECTION
 - P.T. - POINT OF TANGENCY
 - P.S.M. - PROFESSIONAL SURVEYOR AND MAPPER
 - R - RADIUS
 - RAD. - RADIAL
 - R/W - RIGHT-OF-WAY
 - S.D.E. - SWALE DRAINAGE EASEMENT
 - S.T. - SURVEY TIE
 - (TYP.) - TYPICAL
 - U.E. - UTILITY EASEMENT
 - P.B.F.C. - PALM BEACH FARMS COMPANY PLAT NO. 1 (P.B. 2, PGS. 26-28)
 - N 737648.0171
E 905258.2326 - DENOTES STATE PLANE COORDINATES
 - - DENOTES TRACT NUMBER PER PALM BEACH FARMS COMPANY PLAT NO. 1 (PGS. 26-28)

P.O.B.
N 766036.0084
E 919283.3363
P.O.C.
S.E. CORNER OF TRACT 120 (P.B. 2, PGS. 26-28)



NOTE:
COORDINATES SHOWN ARE GRID COORDINATES
DATUM = NAD 83 (1988 ADJUSTMENT)
ZONE = FLORIDA EAST ZONE
LINEAR UNIT = U.S. SURVEY FEET
COORDINATE SYSTEM = 1983 STATE PLANE TRANSVERSE MERCATOR PROJECTION
ALL DISTANCES ARE GROUND UNLESS OTHERWISE NOTED
SCALE FACTOR = 1.0000190
PLAT BEARING = GRID BEARING
NO ROTATION

TRACT "L3"
3.009 ACRES
WATER MANAGEMENT TRACT
(SHALL BE MAINTAINED BY SATURNIA ISLES HOMEOWNERS ASSOCIATION, INC. WITHOUT RECOURSE TO PALM BEACH COUNTY, AND SUBJECT TO EXISTING LITTORAL ZONE RESTRICTIVE COVENANT AGREEMENT AS RECORDED IN O.R.B. 12280, PG. 159 - 180, PUBLIC RECORDS OF PALM BEACH COUNTY, FLORIDA)