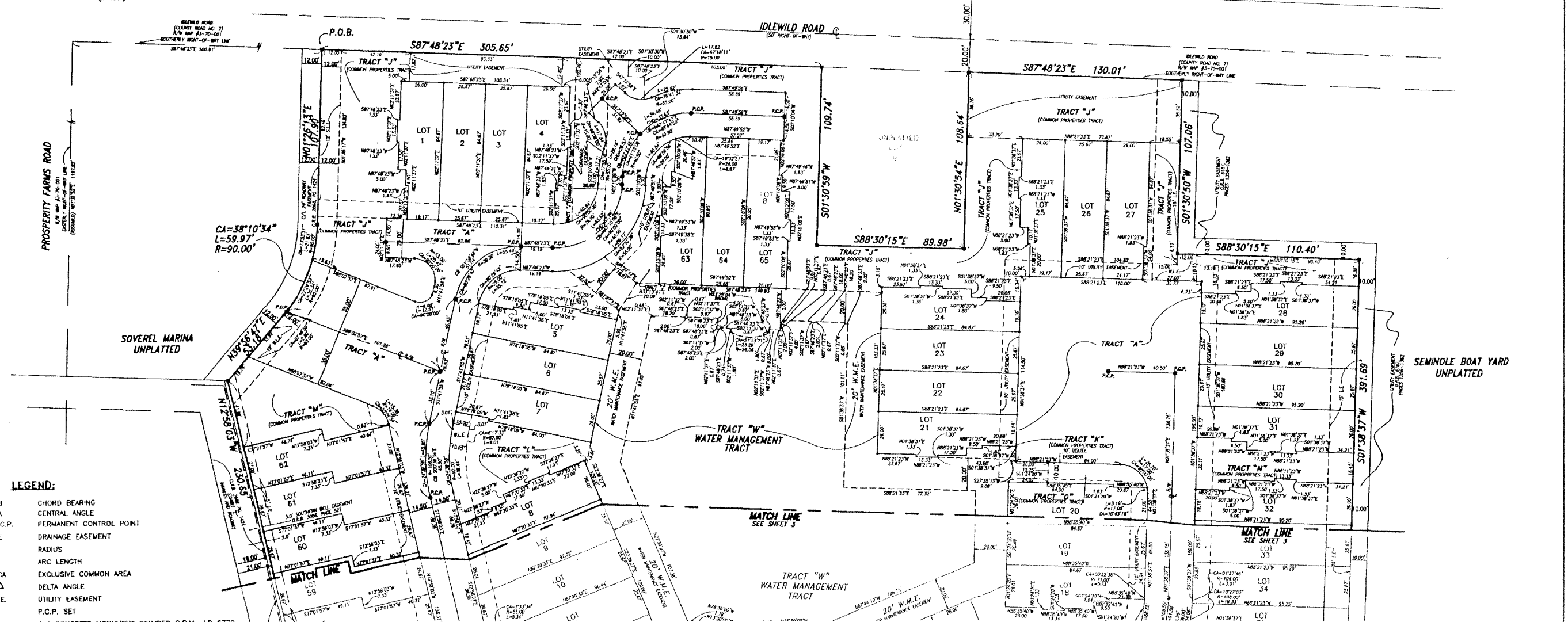
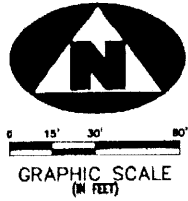


MARINA GARDENS PLAT II

BEING A PARCEL OF LAND IN THE NORTHEAST QUARTER (NE 1/4) OF SECTION 5,
TOWNSHIP 42 SOUTH, RANGE 43 EAST, CITY OF PALM BEACH GARDENS,
PALM BEACH COUNTY, FLORIDA
JULY, 2001

STATE OF FLORIDA }
COUNTY OF PALM BEACH }
THIS PLAT WAS FILED FOR RECORD AT }
THIS _____ DAY OF _____ }
A.D. 2001 AND DULY }
RECORDED IN PLAT BOOK _____ }
PAGES _____ THROUGH _____ }
DOROTHY H. WILKEN }
CLERK OF THE CIRCUIT COURT }
BY: _____ }
DEPUTY CLERK

122



- LEGEND:**
- CB CHORD BEARING
 - CA CENTRAL ANGLE
 - P.C.P. PERMANENT CONTROL POINT
 - DE DRAINAGE EASEMENT
 - R RADIUS
 - L ARC LENGTH
 - ECA EXCLUSIVE COMMON AREA
 - Δ DELTA ANGLE
 - U.E. UTILITY EASEMENT
 - P.C.P. SET
 - 4x4 CONCRETE MONUMENT STAMPED P.R.M., LB 6770
 - WLE WATER LINE EASEMENT
 - P.B. PLAT BOOK
 - PGS PAGES
 - ⊕ CENTERLINE
 - IEE INGRESS EGRESS EASEMENT
 - LE LANDSCAPE EASEMENT
 - PC POINT OF CURVATURE
 - PT POINT OF TANGENCY
 - SLE SEWER LINE EASEMENT
 - R/W RIGHT OF WAY
 - L.B. LICENSED BUSINESS
 - P.S.&M. PROFESSIONAL SURVEYOR & MAPPER
 - PRM PERMANENT REFERENCE MONUMENT
 - P.O.C. POINT OF COMMENCEMENT
 - P.O.B. POINT OF BEGINNING
 - SET IRON ROD AND CAP (LB 6770)
 - O.R.B. OFFICIAL RECORD BOOK

MARINA GARDENS PLAT II

CARNEY-MELHAUS INC.
LTD.

11911 U.S. HIGHWAY 1, SUITE 120 PALM BEACH, FLORIDA 33480
PHONE: (561) 853-1100
FAX: (561) 853-1420

3860 MARGARET BELLEWAVE, SUITE 200 FORT LAUDERDALE, FL 33308
PHONE: (954) 554-2200
FAX: (954) 554-2200

FIELD: _____ PROJ. # 89-024 F.B. _____ P.C. _____
OFFICE JEK/JLG DATE: 9-24-99 DWG. NO. COVER _____ SCALE: 1"=30'
C'KD: R.J.K. REF: _____ SHEET: 2 of 3