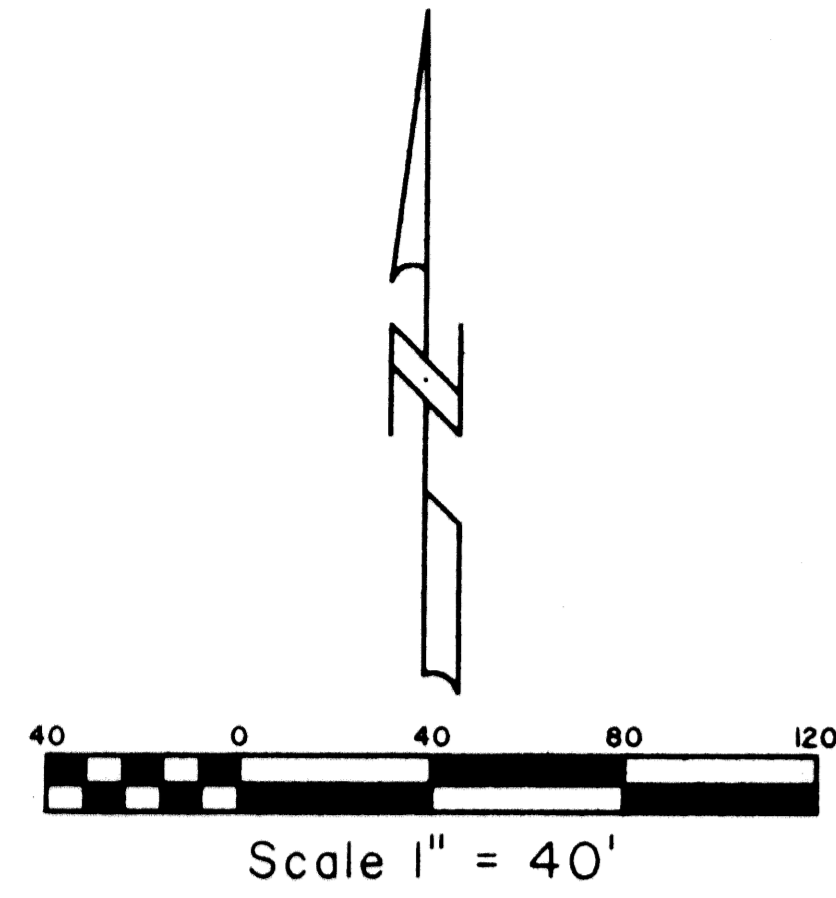


MELROSE P.U.D. "VENETIAN ISLES" - PARCEL I

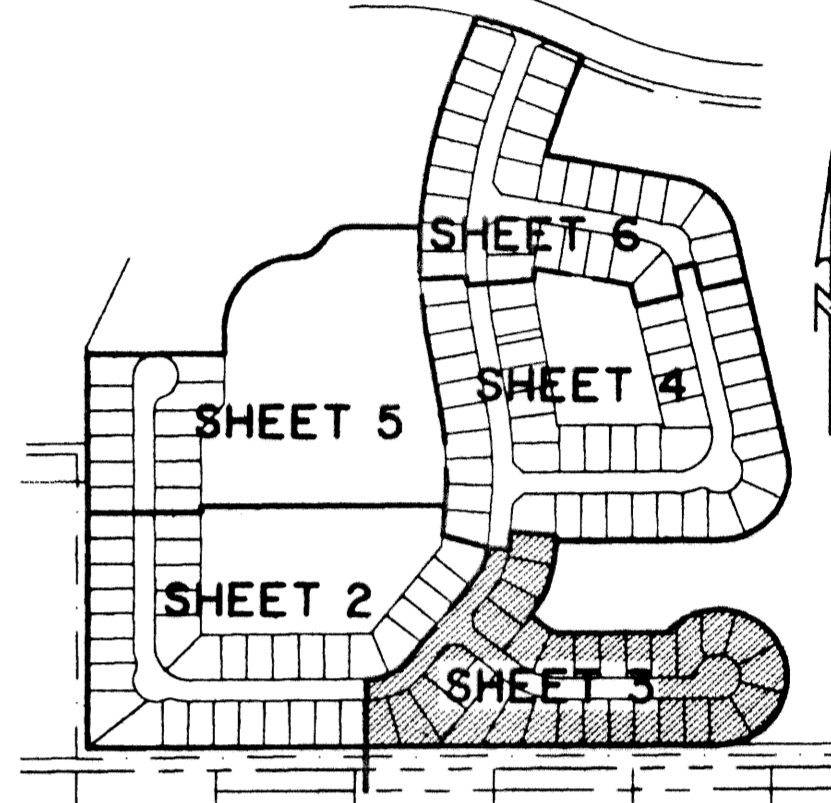
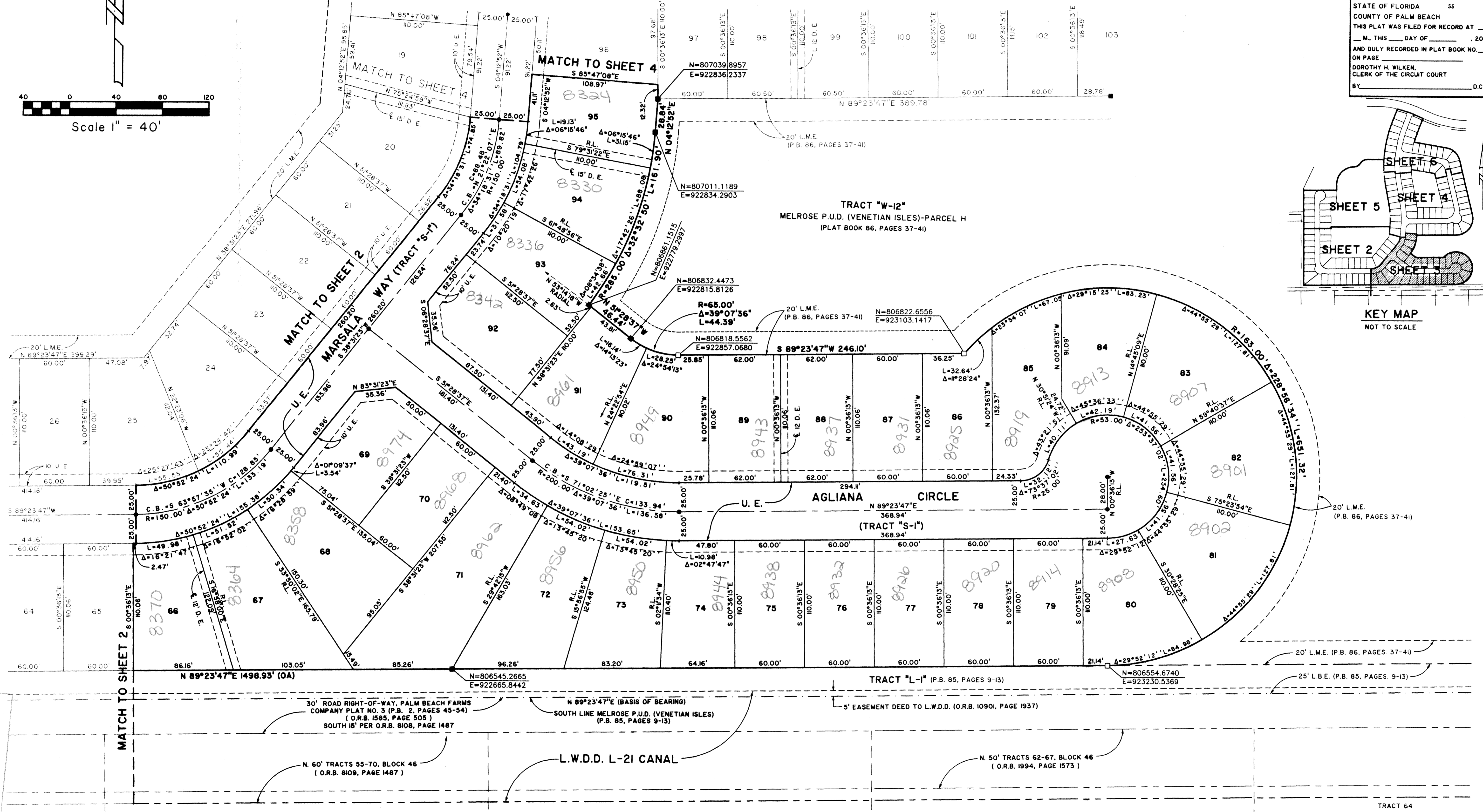
A PORTION OF A PLANNED UNIT DEVELOPMENT
 LYING IN SECTION 17, TOWNSHIP 45 SOUTH, RANGE 42 EAST,
 BEING THE REPLAT OF A PORTION OF TRACT "U", MELROSE PARK (VENETIAN ISLES), AS
 RECORDED IN PLAT BOOK 85, PAGES 9 THRU 13, PUBLIC RECORDS OF PALM BEACH COUNTY, FLORIDA.

SHEET 3 OF 6

132



STATE OF FLORIDA SS
 COUNTY OF PALM BEACH
 THIS PLAT WAS FILED FOR RECORD AT _____
 M. THIS _____ DAY OF _____, 2001
 AND DULY RECORDED IN PLAT BOOK NO. _____
 ON PAGE _____
 DOROTHY H. WILKEN,
 CLERK OF THE CIRCUIT COURT
 BY _____ D.C.



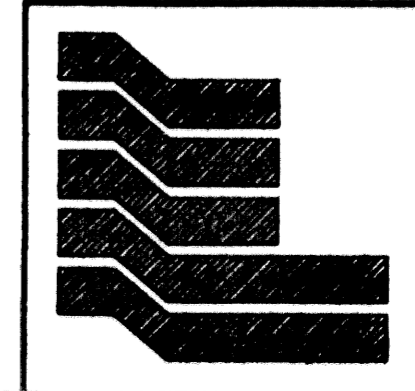
Melrose PUD Venetian Isles
 71
 PLAT BOOK 85
 PAGE 132
 ZONING NR
 ZIP CODE 33437

COORDINATE NOTE:
 STATE PLANE COORDINATES SHOWN ARE GRID DATUM, NAD 83 1990
 ADJUSTMENT, FLORIDA EAST ZONE, COORDINATE SYSTEM 1983 STATE
 PLANE, TRANSVERSE MERCATOR PROJECTION
 LINEAR UNIT = US SURVEY FEET
 ALL DISTANCES ARE GROUND
 SCALE FACTOR = 1.0000232
 GROUND DISTANCE X SCALE FACTOR = GRID DISTANCE

N 89°23'47"E (PLAT BEARING) 00°21'03" COUNTERCLOCKWISE ROTATION
 S 89°02'44"E (GRID BEARING) PLAT TO GRID

THE SOUTH LINE OF MELROSE P.U.D. (VENETIAN ISLES)

BLOCK 46
 THE PALM BEACH FARMS COMPANY PLAT NO. 3
 (PLAT BOOK 2, PAGES 45-54)



Landmark Surveying & Mapping Inc.
 1850 Forest Hill Boulevard
 Ph. (561) 433-5405 Suite 100 W.P.B. Florida
 LB # 4396

MELROSE P.U.D. "VENETIAN ISLES" - PARCEL I