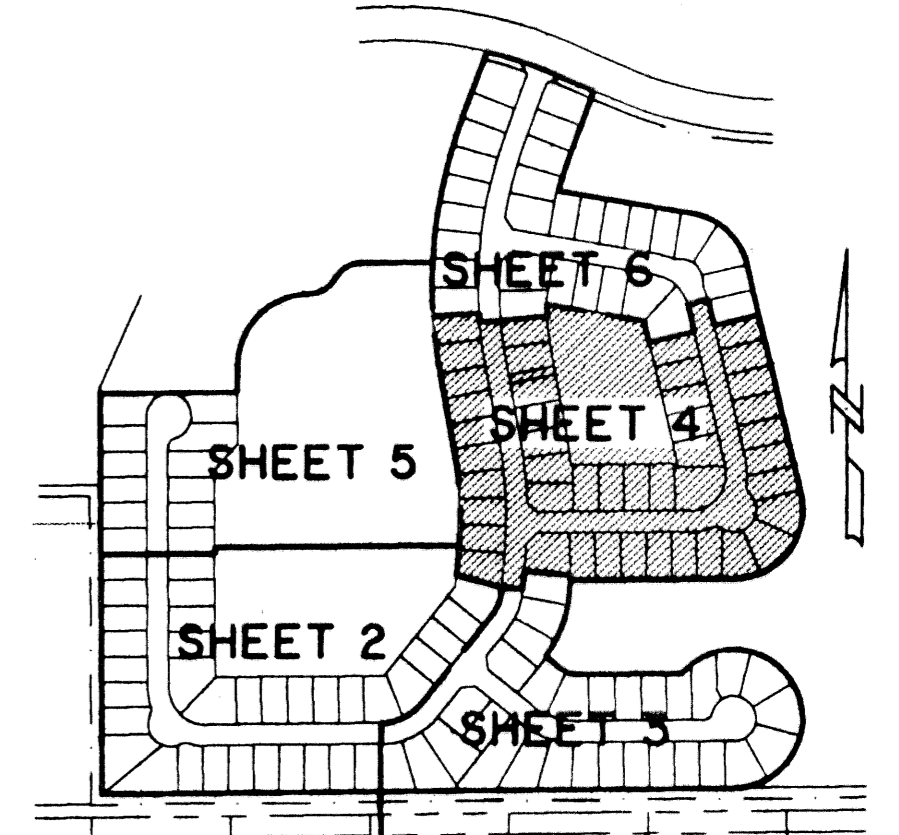


MELROSE P.U.D. "VENETIAN ISLES" - PARCEL I

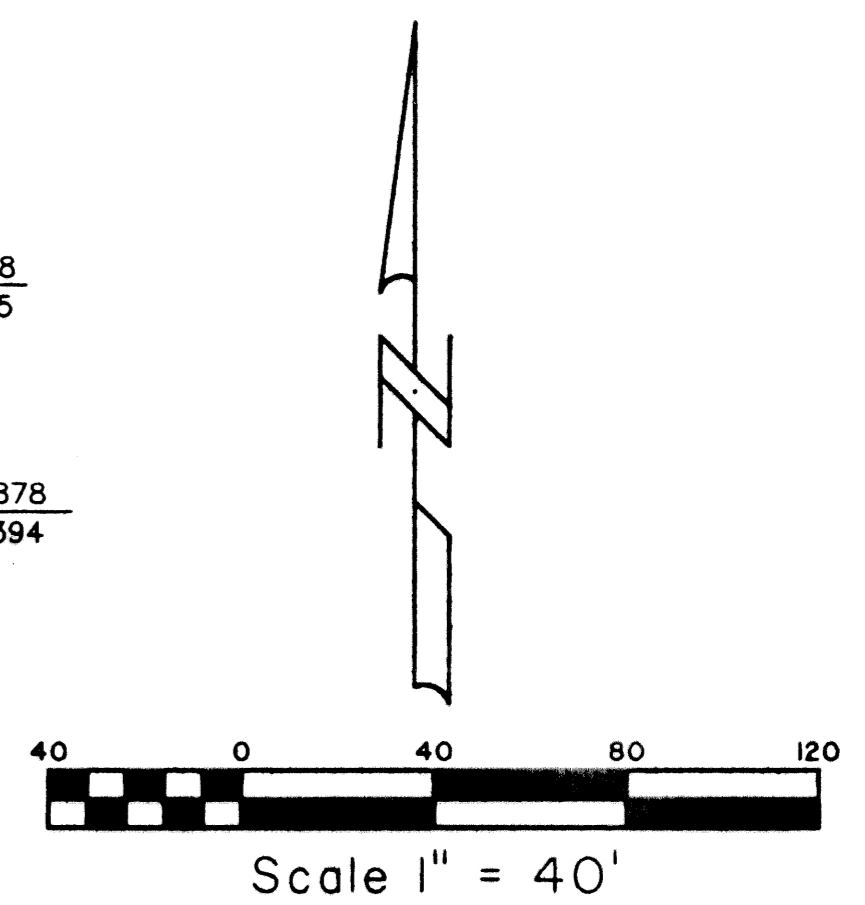
133

A PORTION OF A PLANNED UNIT DEVELOPMENT
 LYING IN SECTION 17, TOWNSHIP 45 SOUTH, RANGE 42 EAST,
 BEING THE REPLAT OF A PORTION OF TRACT "U", MELROSE PARK (VENETIAN ISLES), AS
 RECORDED IN PLAT BOOK 85, PAGES 9 THRU 13, PUBLIC RECORDS OF PALM BEACH COUNTY, FLORIDA.
 SHEET 4 OF 6

STATE OF FLORIDA SS
 COUNTY OF PALM BEACH
 THIS PLAT WAS FILED FOR RECORD AT _____
 _____ M., THIS _____ DAY OF _____, 2001
 AND DULY RECORDED IN PLAT BOOK NO. _____
 ON PAGE _____
 DOROTHY H. WILKEN,
 CLERK OF THE CIRCUIT COURT
 BY _____ D.C.



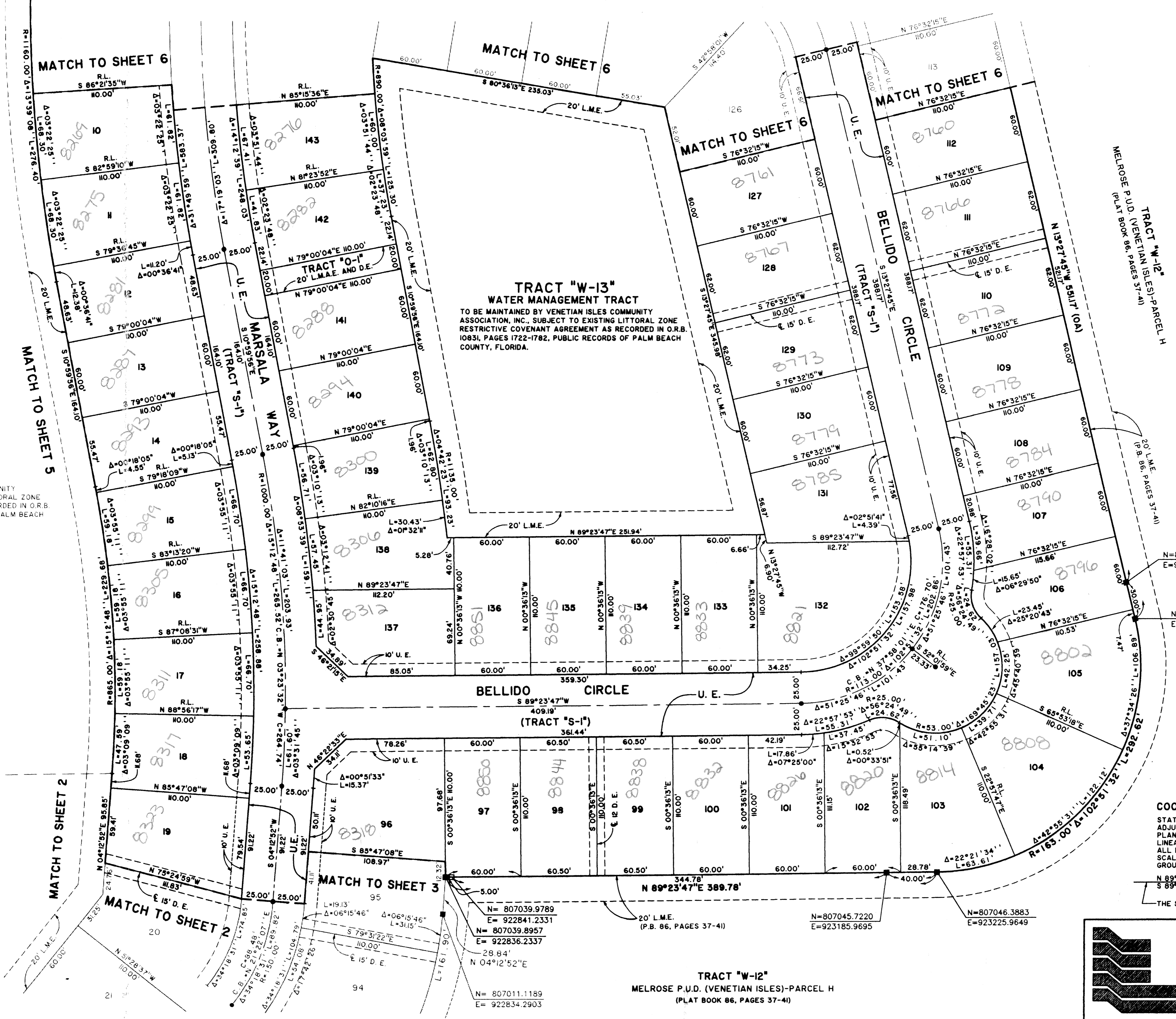
KEY MAP
 NOT TO SCALE



COORDINATE NOTE:
 STATE PLANE COORDINATES SHOWN ARE GRID DATUM, NAD 83 1990
 ADJUSTMENT, FLORIDA EAST ZONE, COORDINATE SYSTEM 1983 STATE
 PLANE, TRANSVERSE MERCATOR PROJECTION
 LINEAR UNIT = US SURVEY FEET
 ALL DISTANCES ARE GROUND
 SCALE FACTOR = 1.0000232
 GROUND DISTANCE X SCALE FACTOR = GRID DISTANCE
 N 89°23'47"E (PLAT BEARING) 00°21'03" COUNTERCLOCKWISE ROTATION
 S 89°02'44"E (GRID BEARING) PLAT TO GRID
 THE SOUTH LINE OF MELROSE P.U.D. (VENETIAN ISLES)

Landmark Surveying & Mapping Inc.
 1850 Forest Hill Boulevard
 Ph. (561) 433-5405 Suite 100 W.P.B. Florida
 LB # 4396

MELROSE P.U.D. "VENETIAN ISLES" - PARCEL I



N=807781.6456
 E=922334.2218
 S 89°23'47" W 167.85'

MATCH TO SHEET 6

MATCH TO SHEET 6

MATCH TO SHEET 6

MATCH TO SHEET 5

MATCH TO SHEET 2

MATCH TO SHEET 2

MATCH TO SHEET 3

TRACT "W-14"
 WATER MANAGEMENT TRACT
 TO BE MAINTAINED BY VENETIAN ISLES COMMUNITY
 ASSOCIATION, INC. SUBJECT TO EXISTING LITTORAL ZONE
 RESTRICTIVE COVENANT AGREEMENT AS RECORDED IN O.R.B.
 10831, PAGES 1722-1782, PUBLIC RECORDS OF PALM BEACH
 COUNTY, FLORIDA.

TRACT "W-13"
 WATER MANAGEMENT TRACT
 TO BE MAINTAINED BY VENETIAN ISLES COMMUNITY
 ASSOCIATION, INC. SUBJECT TO EXISTING LITTORAL ZONE
 RESTRICTIVE COVENANT AGREEMENT AS RECORDED IN O.R.B.
 10831, PAGES 1722-1782, PUBLIC RECORDS OF PALM BEACH
 COUNTY, FLORIDA.

TRACT "W-12"
 MELROSE P.U.D. (VENETIAN ISLES) - PARCEL H
 (PLAT BOOK 86, PAGES 37-41)



MELOSE 133
 TABLE 9
 BLOCK 185A
 ZIP CODE 33137
 1039
 44