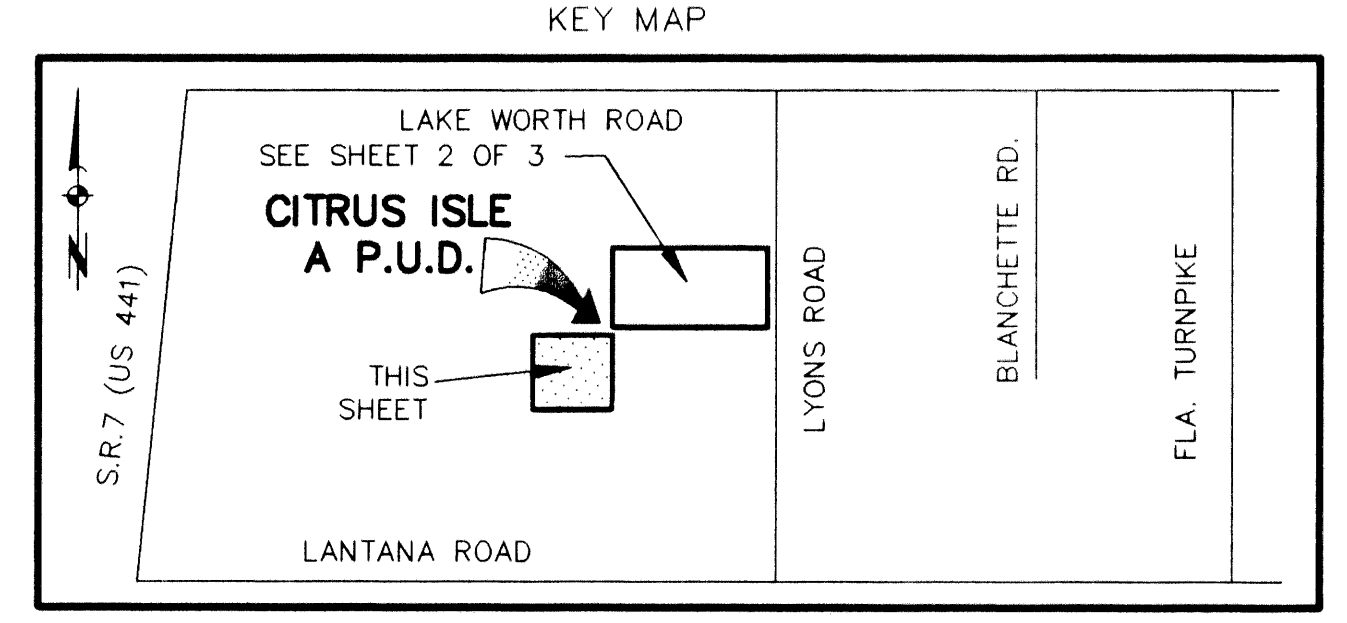
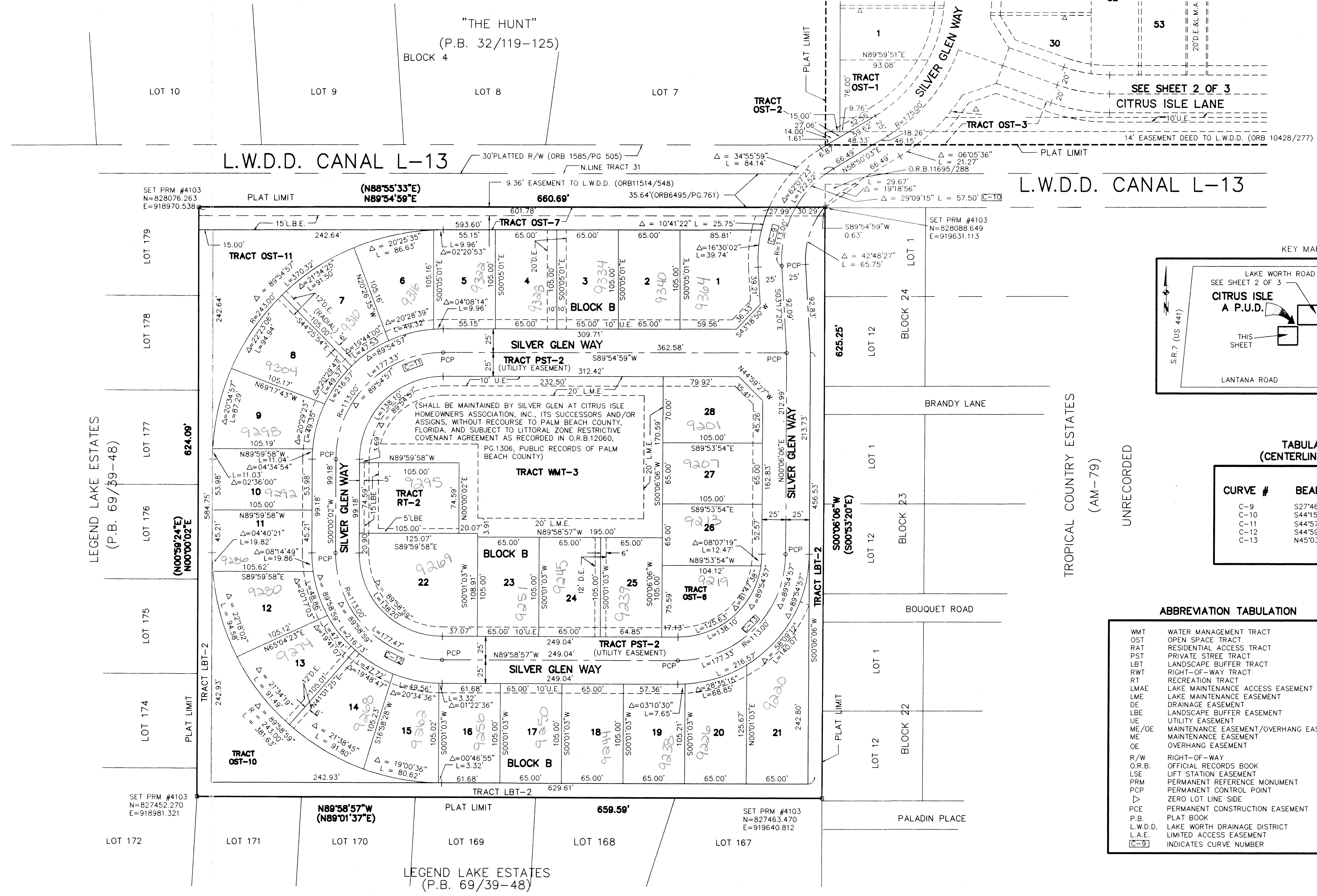
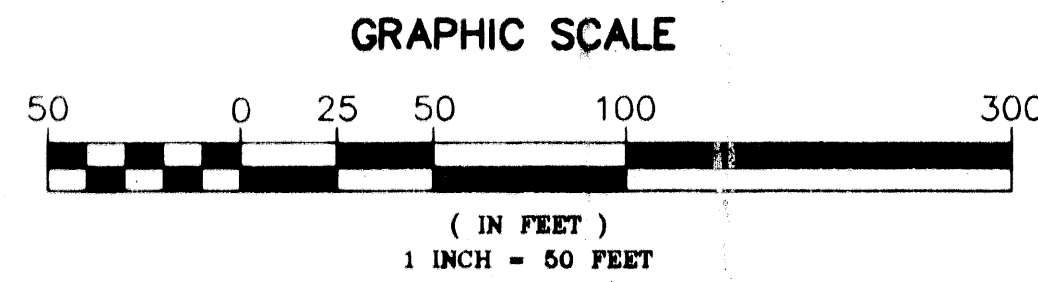


CITRUS ISLE, A P.U.D.

A REPLAT OF A PORTION OF TRACTS 27, 28, AND 31, BLOCK 27
 PALM BEACH FARMS COMPANY PLAT NO. 3 (P.B.2,PGS.45-54,PBCR)
 SECTION 30, TOWNSHIP 44 SOUTH, RANGE 42 EAST
 PALM BEACH COUNTY, FLORIDA

PREPARED BY
 KATHLEEN L. HALL LAND SURVEYING, INC.
 1101 HOLLAND DRIVE, SUITE 32
 BOCA RATON, FLORIDA 33487
 TEL.(561) 443-0426
 APRIL, 2000

COUNTY OF PALM BEACH
 STATE OF FLORIDA
 THIS PLAT WAS FILED FOR
 RECORD AT 2:21
 THIS 11 DAY OF August
 2000, AND DULY RECORDED
 IN PLAT BOOK 91
 PAGES 136 THROUGH 138
 DOROTHY H. WILKIN
 CLERK OF CIRCUIT COURT



TABULATION (CENTERLINE CURVES)

CURVE #	BEARING	DISTANCE
C-9	S27°46'22"W	116.61'
C-10	S44°15'26"W	56.88'
C-11	S44°57'30"W	159.69'
C-12	S44°59'27"E	159.78'
C-13	N45°03'35"E	159.69'

ABBREVIATION TABULATION

WMT	WATER MANAGEMENT TRACT
OST	OPEN SPACE TRACT
RAT	RESIDENTIAL ACCESS TRACT
PST	PRIVATE STREET TRACT
LBT	LANDSCAPE BUFFER TRACT
RWT	RIGHT-OF-WAY TRACT
RT	RECREATION TRACT
LMAE	LAKE MAINTENANCE ACCESS EASEMENT
LME	LAKE MAINTENANCE EASEMENT
DE	DRAINAGE EASEMENT
LBE	LANDSCAPE BUFFER EASEMENT
UE	UTILITY EASEMENT
ME/OE	MAINTENANCE EASEMENT/OVERHANG EASEMENT
ME	MAINTENANCE EASEMENT
OE	OVERHANG EASEMENT
R/W	RIGHT-OF-WAY
O.R.B.	OFFICIAL RECORDS BOOK
LSE	LIFT STATION EASEMENT
PRM	PERMANENT REFERENCE MONUMENT
PCP	PERMANENT CONTROL POINT
Z	ZERO LOT LINE SIDE
PCE	PERMANENT CONSTRUCTION EASEMENT
P.B.	PLAT BOOK
L.W.D.D.	LAKE WORTH DRAINAGE DISTRICT
L.A.E.	LIMITED ACCESS EASEMENT
[C-9]	INDICATES CURVE NUMBER

CITRUS ISLE
 PLAT 138
 BLOCK MAP
 ZONING: PUD
 PLAT NO: 48
 ZIP CODE: 33467
 TAX: 738
 PUB NAME

LEGEND LAKE ESTATES
 (P.B. 69/39-48)
 624.09'
 (N00°59'24"E)
 (S00°00'02"E)

TROPICAL COUNTRY ESTATES
 (AM-79)
 UNRECORDED

LEGEND LAKE ESTATES
 (P.B. 69/39-48)