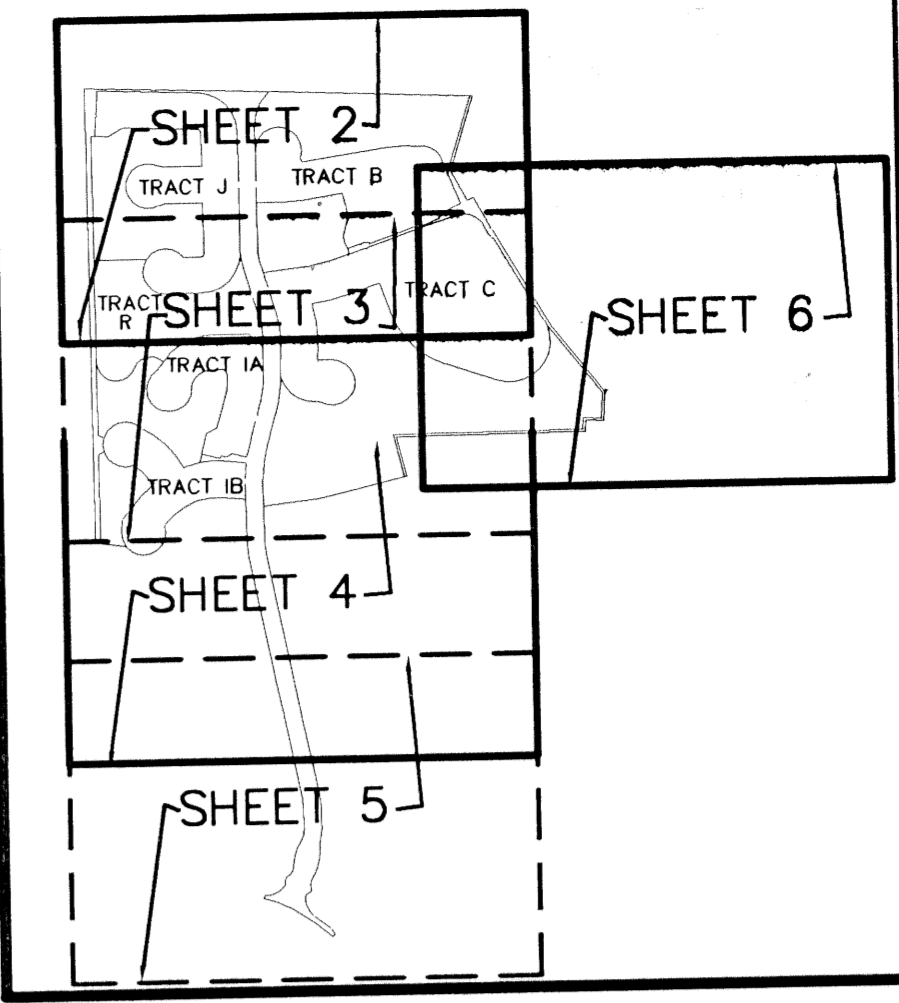


TOWNE PARK PLAT THREE

146

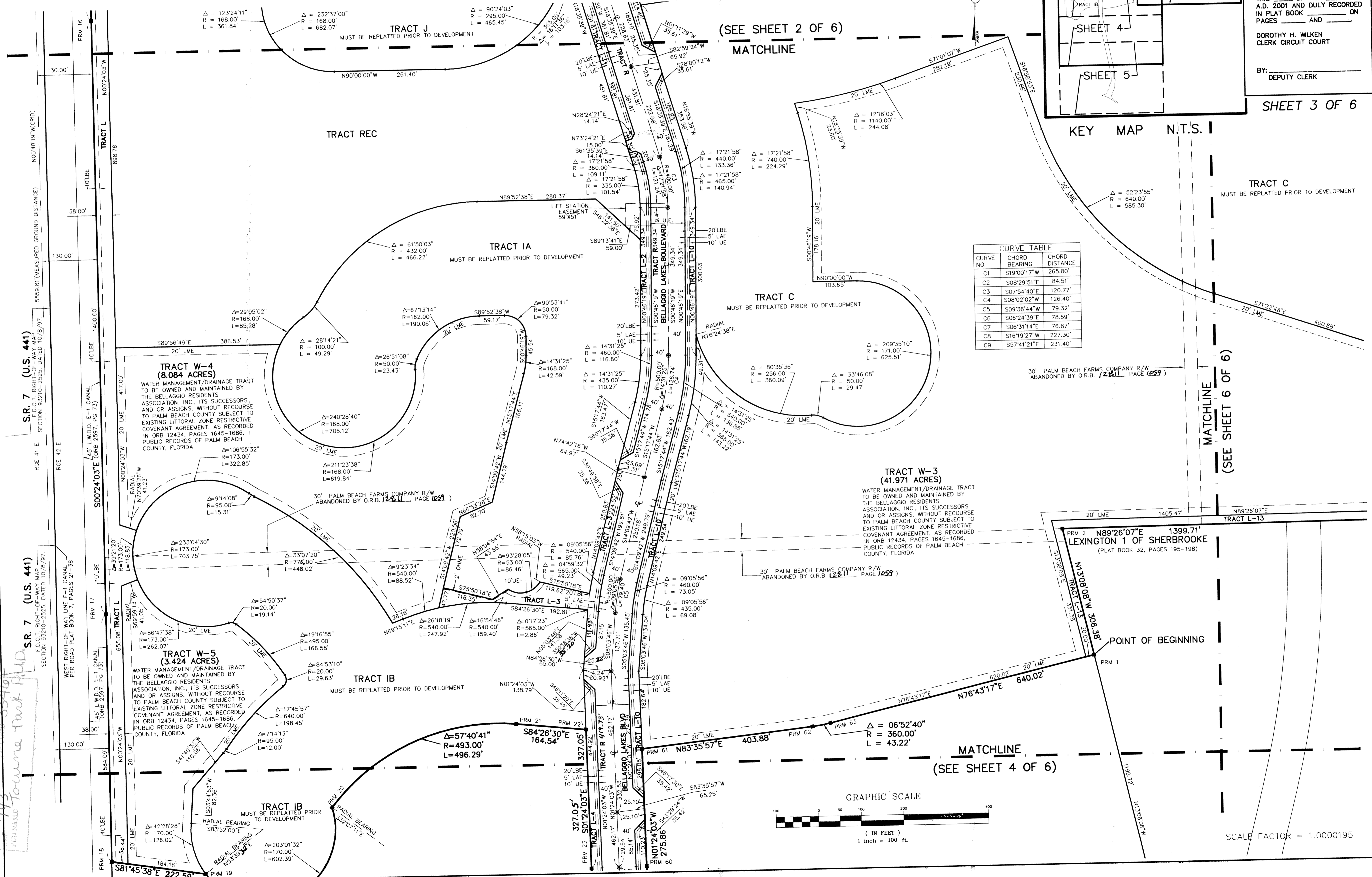
THIS INSTRUMENT PREPARED BY
 DAVID P. LINDLEY
 OF
CAULFIELD and WHEELER, INC.
 SURVEYORS - ENGINEERS - PLANNERS
 7301-A WEST PALMETTO PARK ROAD, SUITE 100A
 BOCA RATON, FLORIDA 33433 - (561)392-1991
 AUGUST - 2000

A PLANNED UNIT DEVELOPMENT BEING A PART OF TOWNE PARK PUD
 BEING A REPLAT OF A PORTION OF BLOCKS 36 AND 43,
 "PALM BEACH FARMS COMPANY PLAT NO. 3, AS RECORDED IN PLAT BOOK 2, PAGES 45 THROUGH 54 OF THE PUBLIC RECORDS OF PALM BEACH
 COUNTY, FLORIDA, LYING IN SECTIONS 6 AND 7, TOWNSHIP 45 SOUTH, RANGE 42 EAST, PALM BEACH COUNTY, FLORIDA



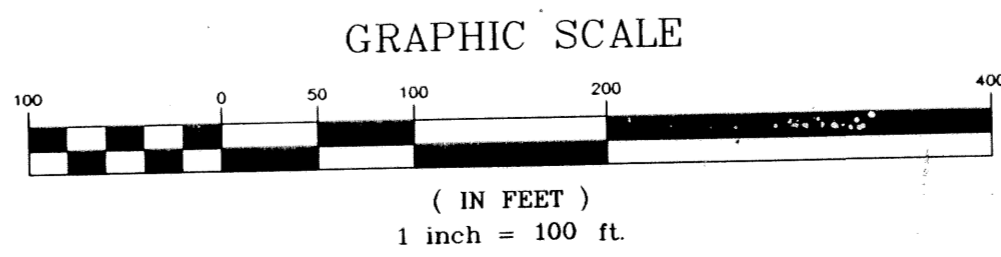
STATE OF FLORIDA
 COUNTY OF PALM BEACH
 THIS PLAT WAS FILED FOR
 RECORD AT _____ M.
 THIS _____ DAY OF _____
 A.D. 2001 AND DULY RECORDED
 IN PLAT BOOK _____ ON
 PAGES _____ AND _____
 DOROTHY H. WILKEN
 CLERK CIRCUIT COURT
 BY: _____
 DEPUTY CLERK

SHEET 3 OF 6



CURVE TABLE

CURVE NO.	CHORD BEARING	CHORD DISTANCE
C1	S19°00'17"W	265.80'
C2	S08°29'51"E	84.51'
C3	S07°54'40"E	120.77'
C4	S08°02'02"W	126.40'
C5	S09°36'44"W	79.32'
C6	S06°24'39"E	78.59'
C7	S06°31'14"E	76.87'
C8	S16°19'27"W	227.30'
C9	S57°41'21"E	231.40'



SCALE FACTOR = 1.0000195

STRAYTON Towne Park Plat Three
 SHEET 91
 PAGE 146
 FLOOD MAP # 170A
 ZONING PUB
 742
 FODNAME Towne Park PUD

SR. 7 (U.S. 441)
 F.D. 0.1, RIGHT-OF-WAY MAP
 SECTION 93210-2525, DATED 10/8/97

SR. 7 (U.S. 441)
 F.D. 0.1, RIGHT-OF-WAY MAP
 SECTION 93210-2525, DATED 10/8/97

SR. 7 (U.S. 441)
 F.D. 0.1, RIGHT-OF-WAY MAP
 SECTION 93210-2525, DATED 10/8/97

TRACT W-4 (8.084 ACRES)
 WATER MANAGEMENT/DRAINAGE TRACT TO BE OWNED AND MAINTAINED BY THE BELLAGGIO RESIDENTS ASSOCIATION, INC., ITS SUCCESSORS AND OR ASSIGNS, WITHOUT RECOURSE TO PALM BEACH COUNTY SUBJECT TO EXISTING LITTORAL ZONE RESTRICTIVE COVENANT AGREEMENT, AS RECORDED IN ORB 12434, PAGES 1645-1686, PUBLIC RECORDS OF PALM BEACH COUNTY, FLORIDA

TRACT W-5 (3.424 ACRES)
 WATER MANAGEMENT/DRAINAGE TRACT TO BE OWNED AND MAINTAINED BY THE BELLAGGIO RESIDENTS ASSOCIATION, INC., ITS SUCCESSORS AND OR ASSIGNS, WITHOUT RECOURSE TO PALM BEACH COUNTY SUBJECT TO EXISTING LITTORAL ZONE RESTRICTIVE COVENANT AGREEMENT, AS RECORDED IN ORB 12434, PAGES 1645-1686, PUBLIC RECORDS OF PALM BEACH COUNTY, FLORIDA

TRACT W-3 (41.971 ACRES)
 WATER MANAGEMENT/DRAINAGE TRACT TO BE OWNED AND MAINTAINED BY THE BELLAGGIO RESIDENTS ASSOCIATION, INC., ITS SUCCESSORS AND OR ASSIGNS, WITHOUT RECOURSE TO PALM BEACH COUNTY SUBJECT TO EXISTING LITTORAL ZONE RESTRICTIVE COVENANT AGREEMENT, AS RECORDED IN ORB 12434, PAGES 1645-1686, PUBLIC RECORDS OF PALM BEACH COUNTY, FLORIDA

1399.71' LEXINGTON 1 OF SHERBROOKE
 (PLAT BOOK 32, PAGES 195-198)

TRACT IA
 MUST BE REPLATTED PRIOR TO DEVELOPMENT

TRACT IB
 MUST BE REPLATTED PRIOR TO DEVELOPMENT

TRACT IB
 MUST BE REPLATTED PRIOR TO DEVELOPMENT

TRACT L-3
 MUST BE REPLATTED PRIOR TO DEVELOPMENT

TRACT C
 MUST BE REPLATTED PRIOR TO DEVELOPMENT

TRACT C
 MUST BE REPLATTED PRIOR TO DEVELOPMENT

TRACT J
 MUST BE REPLATTED PRIOR TO DEVELOPMENT

(SEE SHEET 2 OF 6)
 MATCHLINE

(SEE SHEET 4 OF 6)
 MATCHLINE

(SEE SHEET 6 OF 6)
 MATCHLINE

POINT OF BEGINNING

30' PALM BEACH FARMS COMPANY R/W ABANDONED BY O.R.B. 12811, PAGE 1059

30' PALM BEACH FARMS COMPANY R/W ABANDONED BY O.R.B. 12811, PAGE 1059

30' PALM BEACH FARMS COMPANY R/W ABANDONED BY O.R.B. 12811, PAGE 1059