

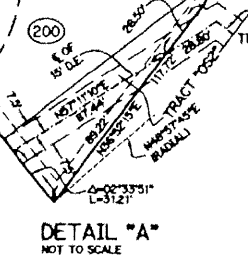
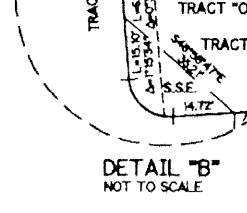
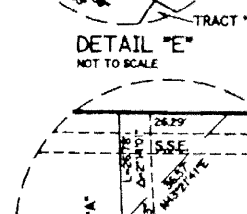
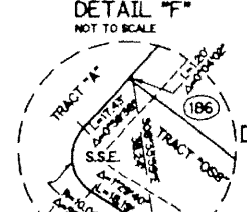
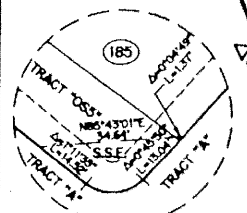
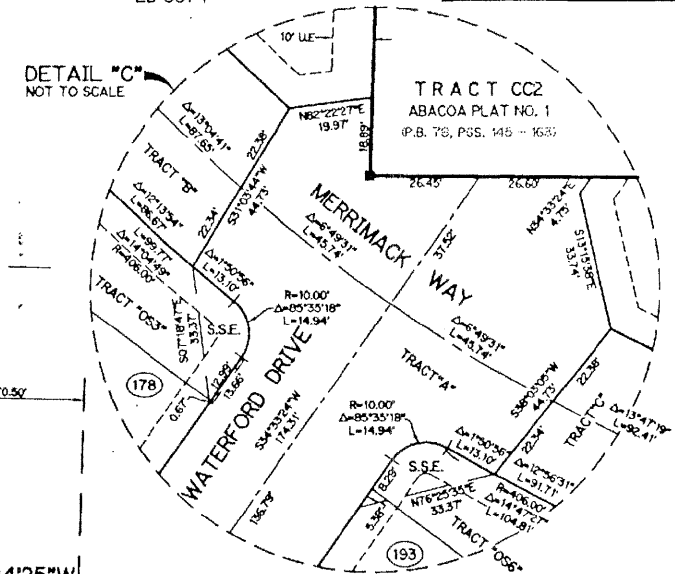
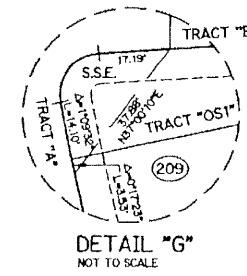
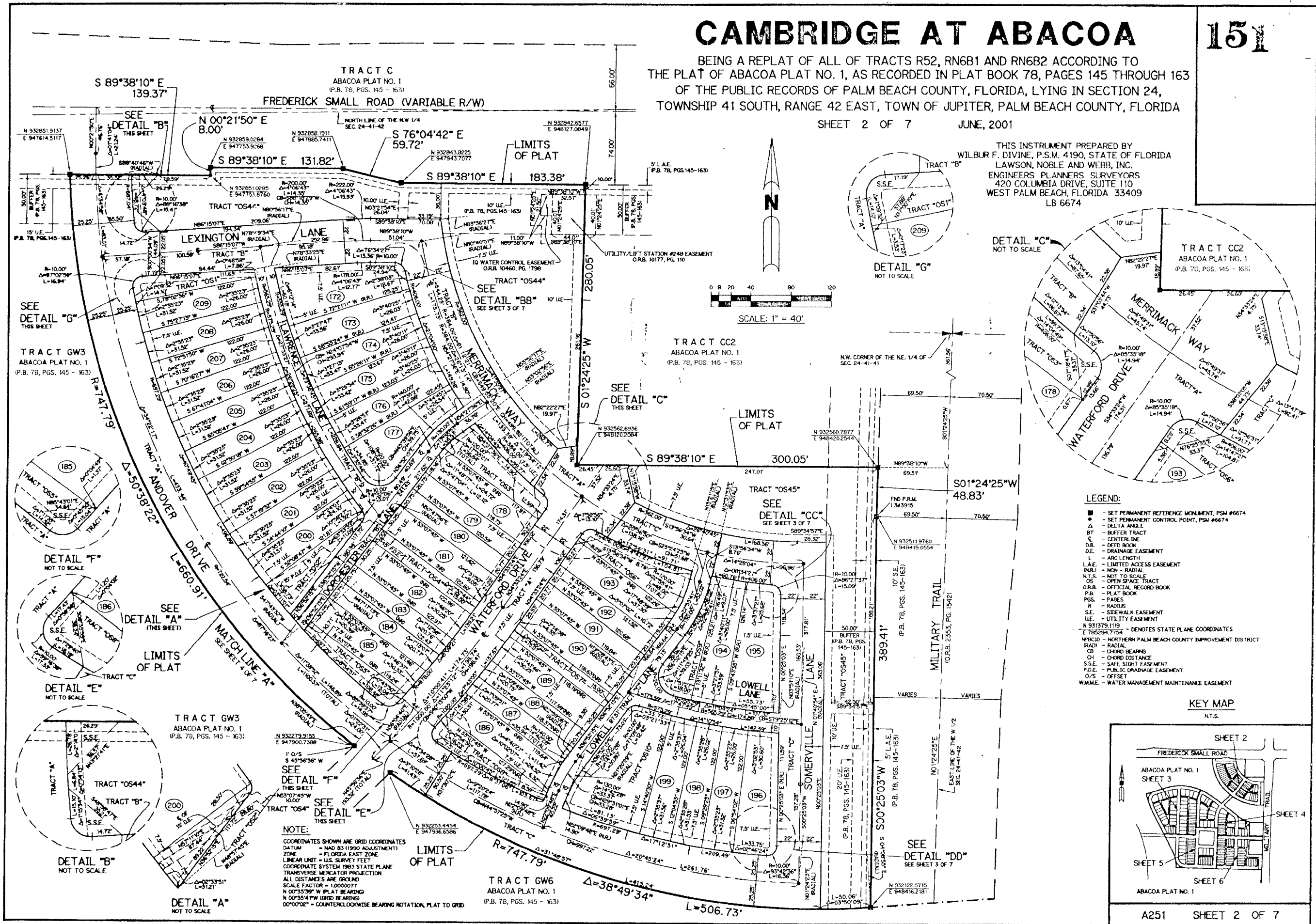
# CAMBRIDGE AT ABACOA

151

BEING A REPLAT OF ALL OF TRACTS R52, RN6B1 AND RN6B2 ACCORDING TO THE PLAT OF ABACOA PLAT NO. 1, AS RECORDED IN PLAT BOOK 78, PAGES 145 THROUGH 163 OF THE PUBLIC RECORDS OF PALM BEACH COUNTY, FLORIDA, LYING IN SECTION 24, TOWNSHIP 41 SOUTH, RANGE 42 EAST, TOWN OF JUPITER, PALM BEACH COUNTY, FLORIDA

SHEET 2 OF 7 JUNE, 2001

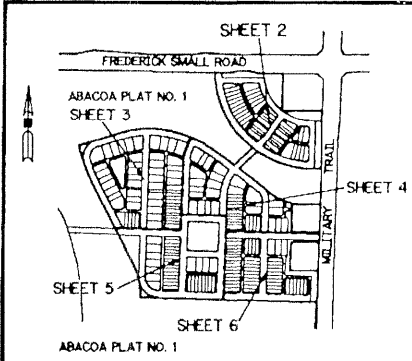
THIS INSTRUMENT PREPARED BY  
WILBUR F. DIVINE, P.S.M. 4190, STATE OF FLORIDA  
LAWSON, NOBLE AND WEBB, INC.  
ENGINEERS PLANNERS SURVEYORS  
420 COLUMBIA DRIVE, SUITE 110  
WEST PALM BEACH, FLORIDA 33409  
LB 6674



**NOTE:**  
COORDINATES SHOWN ARE GRID COORDINATES  
DATUM = NAD 83 (1990 ADJUSTMENT)  
ZONE = FLORIDA EAST ZONE  
LINEAR UNIT = U.S. SURVEY FEET  
COORDINATE SYSTEM 1983 STATE PLANE  
TRANSVERSE MERCATOR PROJECTION  
ALL DISTANCES ARE GROUND  
SCALE FACTOR = 1.0000077  
N 00°33'39" W PLAT BEARING  
N 00°35'41" W GRID BEARING  
00°00'00" = COUNTERCLOCKWISE BEARING ROTATION, PLAT TO GRID

- LEGEND:**
- - SET PERMANENT REFERENCE MONUMENT, PSN #6674
  - - SET PERMANENT CONTROL POINT, PSN #6674
  - Δ - DELTA ANGLE
  - BT - BUFFER TRACT
  - CL - CENTERLINE
  - DE - DETD BOOK
  - DE - DRAINAGE EASEMENT
  - L - ARC LENGTH
  - L.A.E. - LIMITED ACCESS EASEMENT
  - INR - NON - RADIAL
  - NTS - NOT TO SCALE
  - OS - OPEN SPACE TRACT
  - OR.B. - OFFICIAL RECORD BOOK
  - P.B. - PLAT BOOK
  - POS - PAGES
  - R - RADII
  - S.E. - SIDEWALK EASEMENT
  - U.E. - UTILITY EASEMENT
  - N 931579.1119  
E 705594.7154 - DENOTES STATE PLANE COORDINATES
  - NPCID - NORTHERN PALM BEACH COUNTY IMPROVEMENT DISTRICT
  - RADI - RADIAL
  - CB - CHORD BEARING
  - CH - CHORD DISTANCE
  - S.S.E. - SAFE SIGHT EASEMENT
  - P.D.E. - PUBLIC DRAINAGE EASEMENT
  - O/S - OFFSET
  - W.M.M.E. - WATER MANAGEMENT MAINTENANCE EASEMENT

**KEY MAP**  
N.T.S.



A251 SHEET 2 OF 7