

CAMBRIDGE AT ABACOA

BEING A REPLAT OF ALL OF TRACTS R52, RN6B1 AND RN6B2 ACCORDING TO THE PLAT OF ABACOA PLAT NO. 1, AS RECORDED IN PLAT BOOK 78, PAGES 145 THROUGH 163 OF THE PUBLIC RECORDS OF PALM BEACH COUNTY, FLORIDA. LYING IN SECTION 24, TOWNSHIP 41 SOUTH, RANGE 42 EAST, TOWN OF JUPITER, PALM BEACH COUNTY, FLORIDA

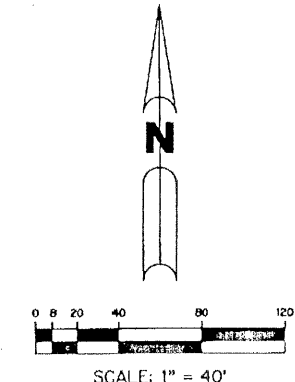
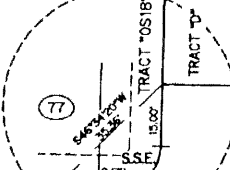
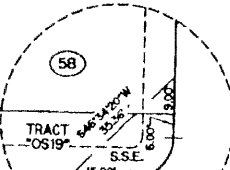
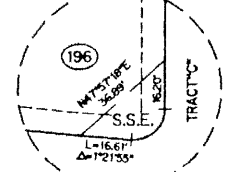
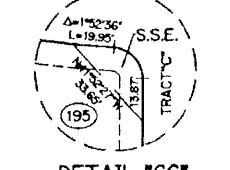
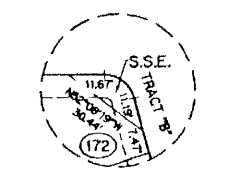
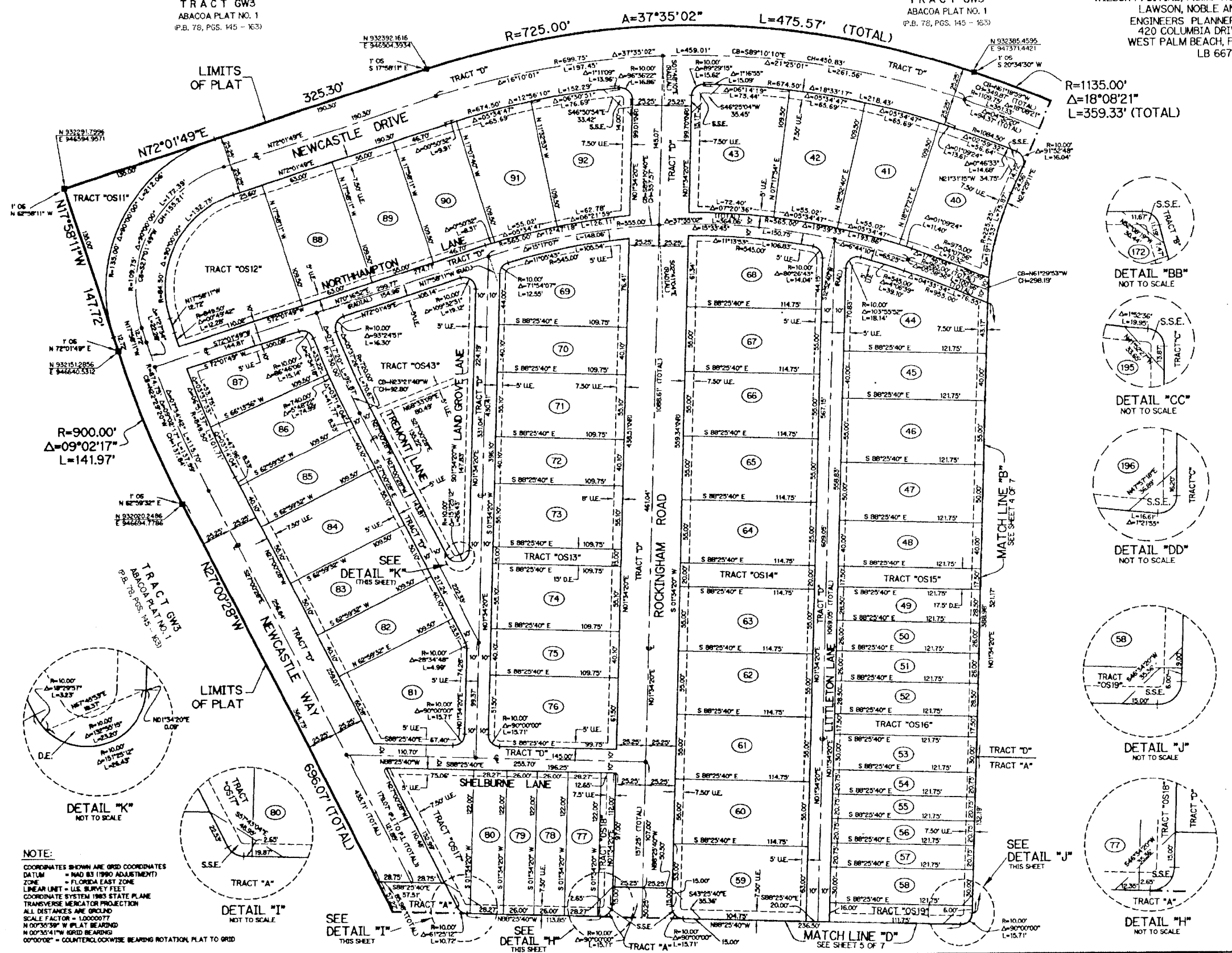
SHEET 3 OF 7 JUNE, 2001

152

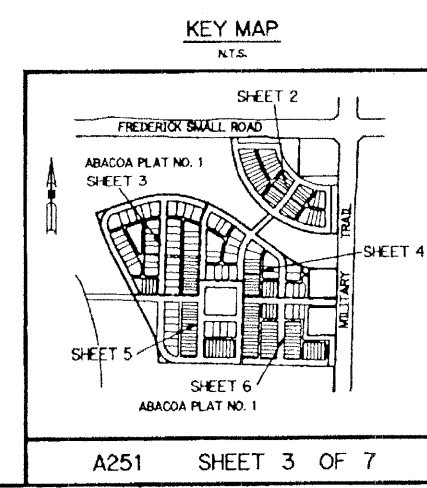
TRACT GW3
ABACOA PLAT NO. 1
P.B. 78, PGS. 145 - 163

TRACT GW3
ABACOA PLAT NO. 1
P.B. 78, PGS. 145 - 163

THIS INSTRUMENT PREPARED BY
WILBUR F. DIVINE, P.S.M. 4190, STATE OF FLORIDA
LAWSON, NOBLE AND WEBB, INC.
ENGINEERS PLANNERS SURVEYORS
420 COLUMBIA DRIVE, SUITE 110
WEST PALM BEACH, FLORIDA 33409
LB 6674



- LEGEND:**
- - SET PERMANENT REFERENCE MONUMENT, PSM #6674
 - - SET PERMANENT CONTROL POINT, PSM #6674
 - Δ - DELTA ANGLE
 - BT - BUFFER TRACT
 - E - CENTERLINE
 - D.B. - DEED BOOK
 - D.E. - DRAINAGE EASEMENT
 - L - ARC LENGTH
 - L.A.E. - LIMITED ACCESS EASEMENT
 - INDU - NON - RADIAL
 - N.T.S. - NOT TO SCALE
 - OS - OPEN SPACE TRACT
 - O.R.B. - OFFICIAL RECORD BOOK
 - P.B. - PLAT BOOK
 - POS. - PAGES
 - R - RADIUS
 - S.E. - SIDEWALK EASEMENT
 - U.E. - UTILITY EASEMENT
 - N 931379.1119
E 78294.7754 - DENOTES STATE PLANE COORDINATES
 - HPICD - NORTH PALM BEACH COUNTY IMPROVEMENT DISTRICT
 - GRAD - RADIAL
 - CB - CHORD BEARING
 - CD - CHORD DISTANCE
 - S.S.E. - SAFE SIGHT EASEMENT
 - O/S - OFF-SET
 - W.M.M.E. - WATER MANAGEMENT MAINTENANCE EASEMENT



NOTE:
COORDINATES SHOWN ARE GRID COORDINATES
DATUM = NAD 83 (1990 ADJUSTMENT)
ZONE = FLORIDA EAST ZONE
LINEAR UNIT = U.S. SURVEY FEET
COORDINATE SYSTEM 1983 STATE PLANE
TRANSVERSE MERCATOR PROJECTION
ALL DISTANCES ARE GROUND
SCALE FACTOR = 1.000077
N 00°35'59" W PLAT BEARING
N 00°35'41" W GRID BEARING
00°00'00" = COUNTERCLOCKWISE BEARING ROTATION PLAT TO GRID