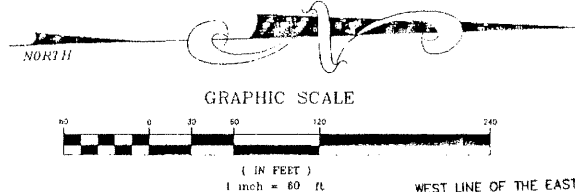
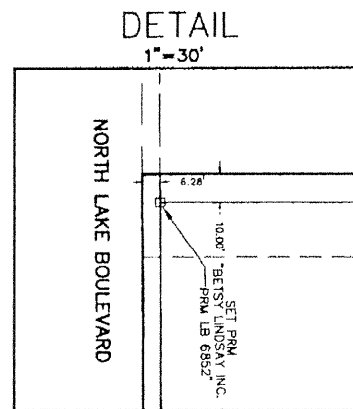


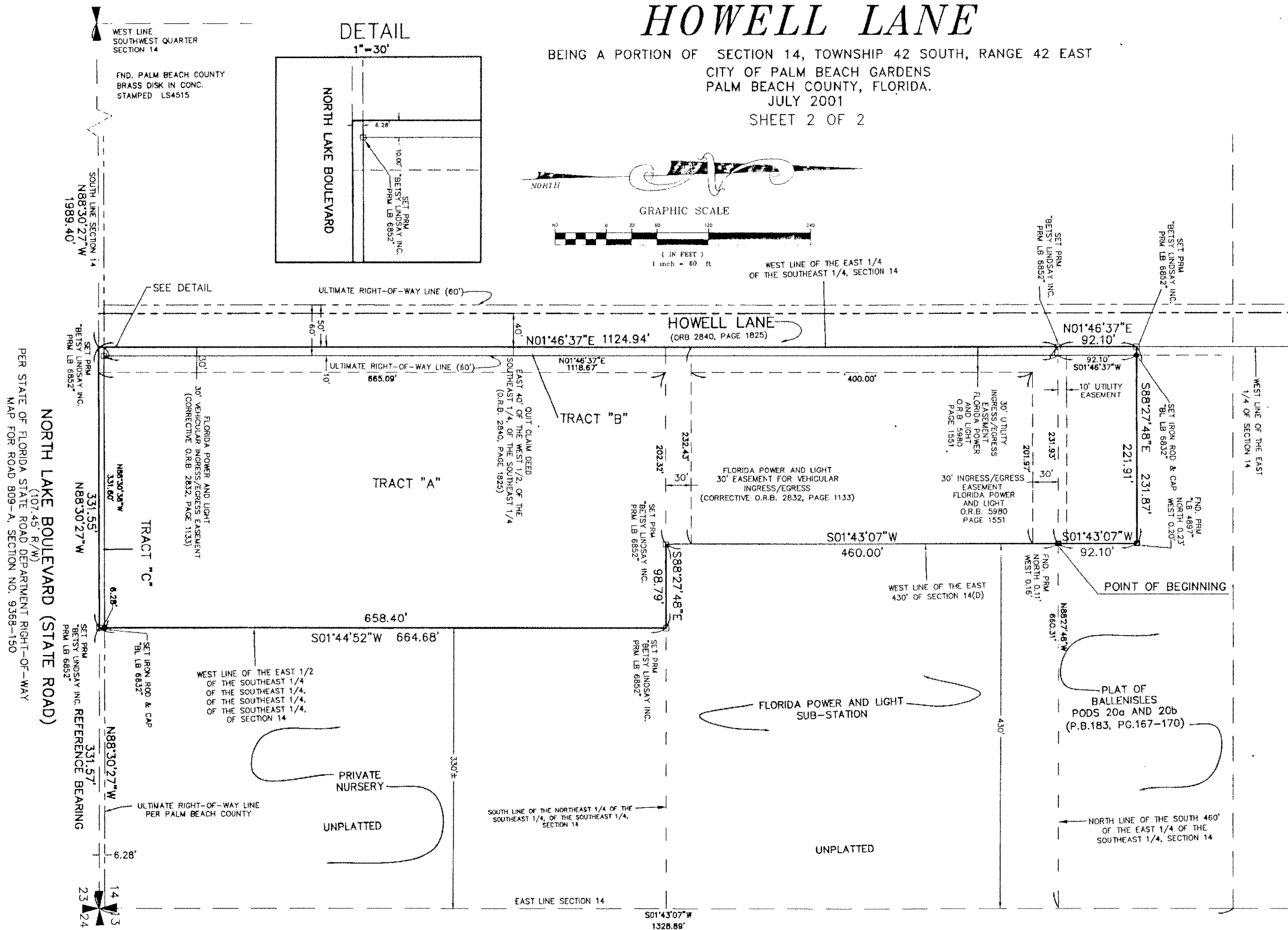
A PLAT OF
**FIRE STATION NO. 3,
HOWELL LANE**

BEING A PORTION OF SECTION 14, TOWNSHIP 42 SOUTH, RANGE 42 EAST
CITY OF PALM BEACH GARDENS
PALM BEACH COUNTY, FLORIDA.
JULY 2001
SHEET 2 OF 2



LEGEND:

- INDICATES FOUND IRON ROD AND CAP
- INDICATES SET PERMANENT REFERENCE MONUMENT (PRM)
- ▣ INDICATES FOUND PERMANENT REFERENCE MONUMENT (PRM)
- ⊗ INDICATES FOUND PARKER-KALON NAIL & DISK "LB 959"
- ⊕ INDICATES SECTION CORNER
- ⊗ INDICATES SECTION QUARTER CORNER
- P.B. PLAT BOOK
- O.R.B. OFFICIAL RECORD BOOK
- P.C. PAGE
- R/W RIGHT OF WAY
- LB LICENSED BUSINESS
- (D) DEED
- FND. FOUND



NORTH LAKE BOULEVARD (STATE ROAD)
(107.45' R/W)
PER STATE OF FLORIDA STATE ROAD DEPARTMENT RIGHT-OF-WAY
MAP FOR ROAD 809-A, SECTION NO. 9368-150

B BETSY LINDSAY, INC.
SURVEYING AND MAPPING
208 NORTH U.S. HWY NO. 1 - UNIT 8 - TEQUESTA, FLORIDA 33469
(561)575-5275 (561)575-4324 FAX
FIRE STATION NO. 3, HOWELL LANE SHEET 2 OF 2