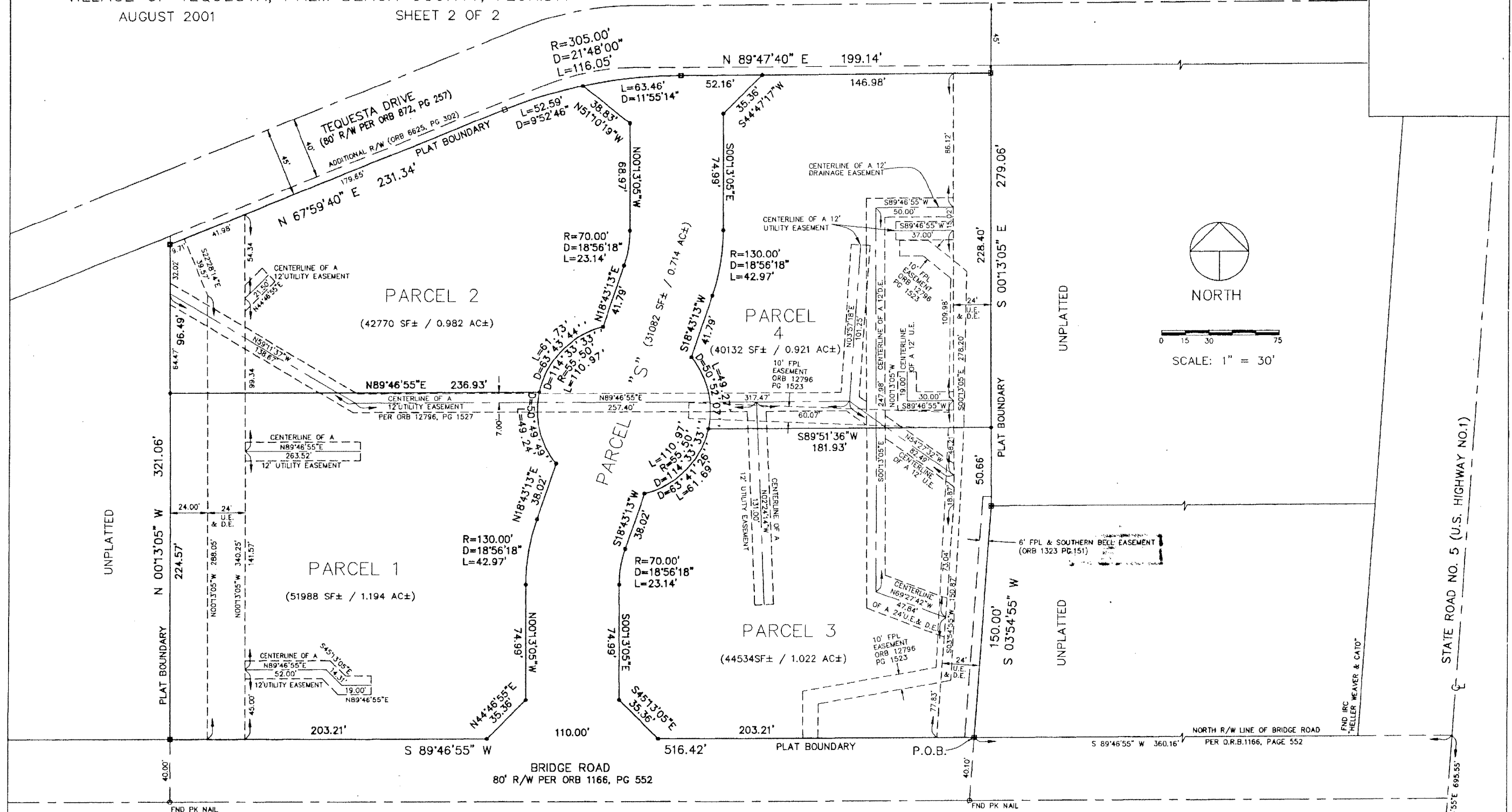


PLAT OF TEQUESTA VILLAGE CENTER

LYING IN SECTION 30, TOWNSHIP 40 SOUTH, RANGE 43 EAST
VILLAGE OF TEQUESTA, PALM BEACH COUNTY, FLORIDA

AUGUST 2001

SHEET 2 OF 2



PREPARED BY ROBERT P. BLASZYK, PSM, IN THE OFFICES OF

RPB Consulting, Inc.

Land Surveying and Mapping, L.B. No. 7022

11211 Prosperity Farms Road, Suite C-301, Palm Beach Gardens, Florida 33410
Phone (561) 876-1110 Fax (561) 624-1569

SOUTH LINE OF SECTION 30,
TOWNSHIP 40 SOUTH, RANGE 43 EAST.

P.O.C.

PROJECT NO. R-01-127
SHEET 2 OF 2
PLAT DATE: 8-01-01