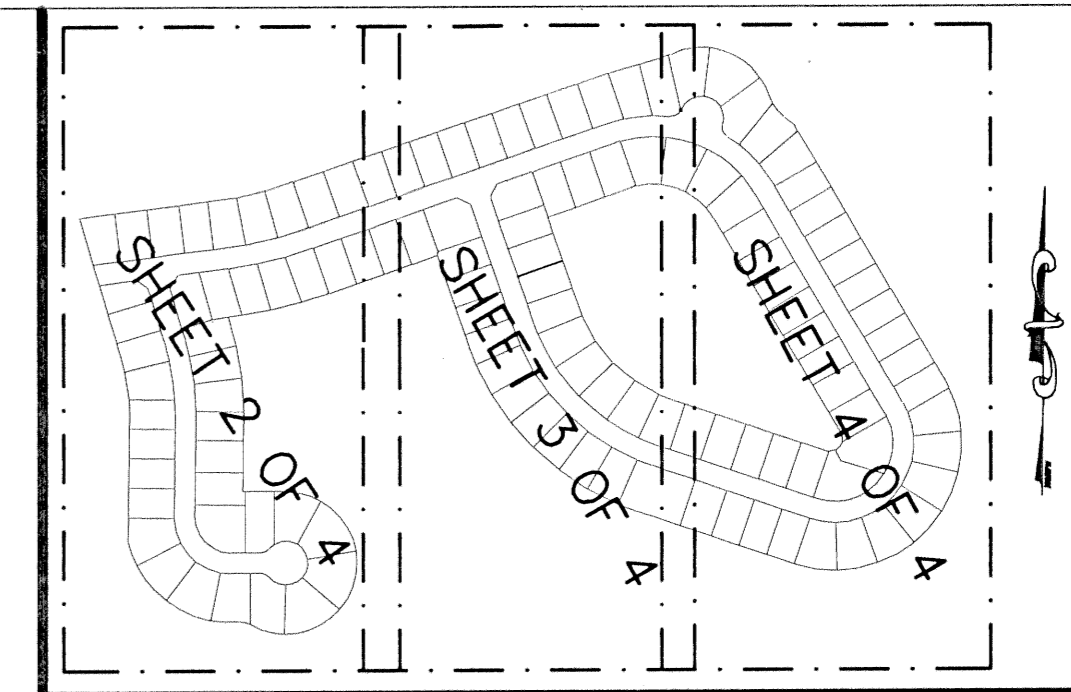


# TOWNE PARK TRACT "C" REPLAT

A PLANNED UNIT DEVELOPMENT BEING A PART OF TOWNE PARK PUD  
 BEING A REPLAT OF TRACT C, "TOWNE PARK PLAT THREE",  
 AS RECORDED IN PLAT BOOK 91, PAGES 144 THROUGH 149 OF THE PUBLIC RECORDS OF PALM BEACH  
 COUNTY, FLORIDA, LYING IN SECTION 6, TOWNSHIP 45 SOUTH, RANGE 42 EAST, PALM BEACH COUNTY, FLORIDA

THIS INSTRUMENT PREPARED BY  
 DAVID P. LINDLEY  
 OF  
**CAULFIELD and WHEELER, INC.**  
 SURVEYORS - ENGINEERS - PLANNERS  
 7301-A WEST PALMETTO PARK ROAD, SUITE 100A  
 BOCA RATON, FLORIDA 33433 - (561)392-1991  
 SEPTEMBER - 2000



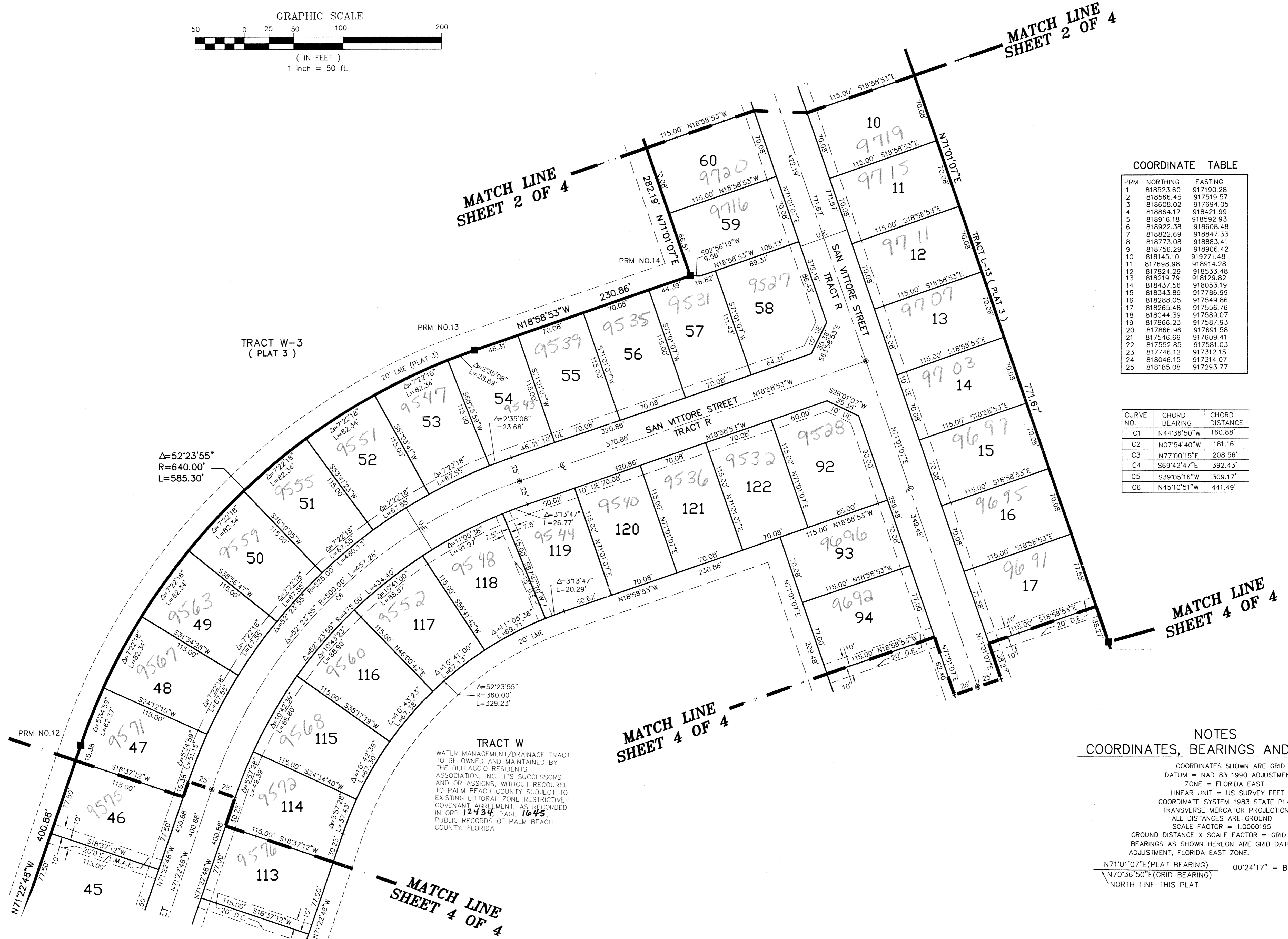
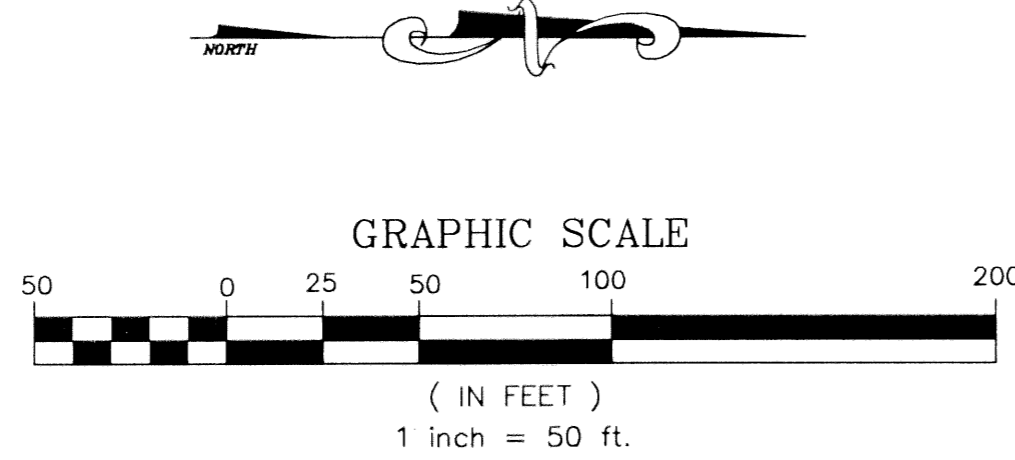
# 172

STATE OF FLORIDA  
 COUNTY OF PALM BEACH  
 THIS PLAT WAS FILED FOR  
 RECORD AT \_\_\_\_\_ M.  
 THIS \_\_\_\_\_ DAY OF \_\_\_\_\_  
 A.D. 2001 AND DULY RECORDED  
 IN PLAT BOOK \_\_\_\_\_ ON  
 PAGES \_\_\_\_\_ AND \_\_\_\_\_

DOROTHY H. WILKEN  
 CLERK CIRCUIT COURT

BY: \_\_\_\_\_  
 DEPUTY CLERK

**SHEET 3 OF 4**



COORDINATE TABLE

PRM	NORTHING	EASTING
1	818523.60	917190.28
2	818566.45	917519.57
3	818608.02	917694.05
4	818664.17	918421.99
5	818916.18	918592.93
6	818922.38	918608.48
7	818822.69	918847.33
8	818773.08	918883.41
9	818756.29	918906.42
10	818145.10	919271.48
11	817698.98	918914.28
12	817824.29	918533.48
13	818219.79	918129.82
14	818437.56	918053.19
15	818343.89	917786.99
16	818288.05	917549.86
17	818265.48	917556.76
18	818044.39	917589.07
19	817866.23	917587.93
20	817866.96	917691.58
21	817546.66	917609.41
22	817552.85	917581.03
23	817746.12	917312.15
24	818046.15	917314.07
25	818185.08	917293.77

CURVE NO.	CHORD BEARING	CHORD DISTANCE
C1	N44°36'50"W	160.88'
C2	N07°54'40"W	181.16'
C3	N77°00'15"E	208.56'
C4	S69°42'47"E	392.43'
C5	S39°05'16"W	309.17'
C6	N45°10'51"W	441.49'

**NOTES**  
 COORDINATES, BEARINGS AND DISTANCES

COORDINATES SHOWN ARE GRID  
 DATUM = NAD 83 1990 ADJUSTMENT  
 ZONE = FLORIDA EAST  
 LINEAR UNIT = US SURVEY FEET  
 COORDINATE SYSTEM 1983 STATE PLANE  
 TRANSVERSE MERCATOR PROJECTION  
 ALL DISTANCES ARE GROUND  
 SCALE FACTOR = 1.0000195  
 GROUND DISTANCE X SCALE FACTOR = GRID DISTANCE  
 BEARINGS AS SHOWN HEREON ARE GRID DATUM, NAD 83 1990  
 ADJUSTMENT, FLORIDA EAST ZONE.  
 N71°01'07"E(PLAT BEARING) 00°24'17" = BEARING ROTATION  
 N70°36'50"E(GRID BEARING) (PLAT TO GRID)  
 NORTH LINE THIS PLAT COUNTERCLOCKWISE

Towne Park Replat  
 PAGE 172  
 PLAT BOOK 91  
 PAGES 144-149  
 741 Towne Park PUD