

ISLES AT PALM BEACH GARDENS

A PARCEL OF LAND SITUATE IN SECTION 36, TOWNSHIP 41 SOUTH, RANGE 42 EAST
CITY OF PALM BEACH GARDENS, PALM BEACH COUNTY, FLORIDA.
SHEET 4 OF 18 AUGUST 2001

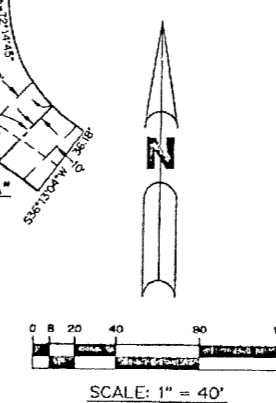
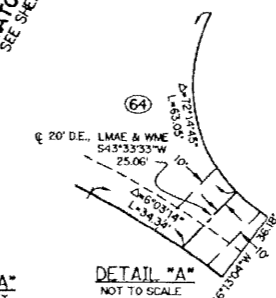
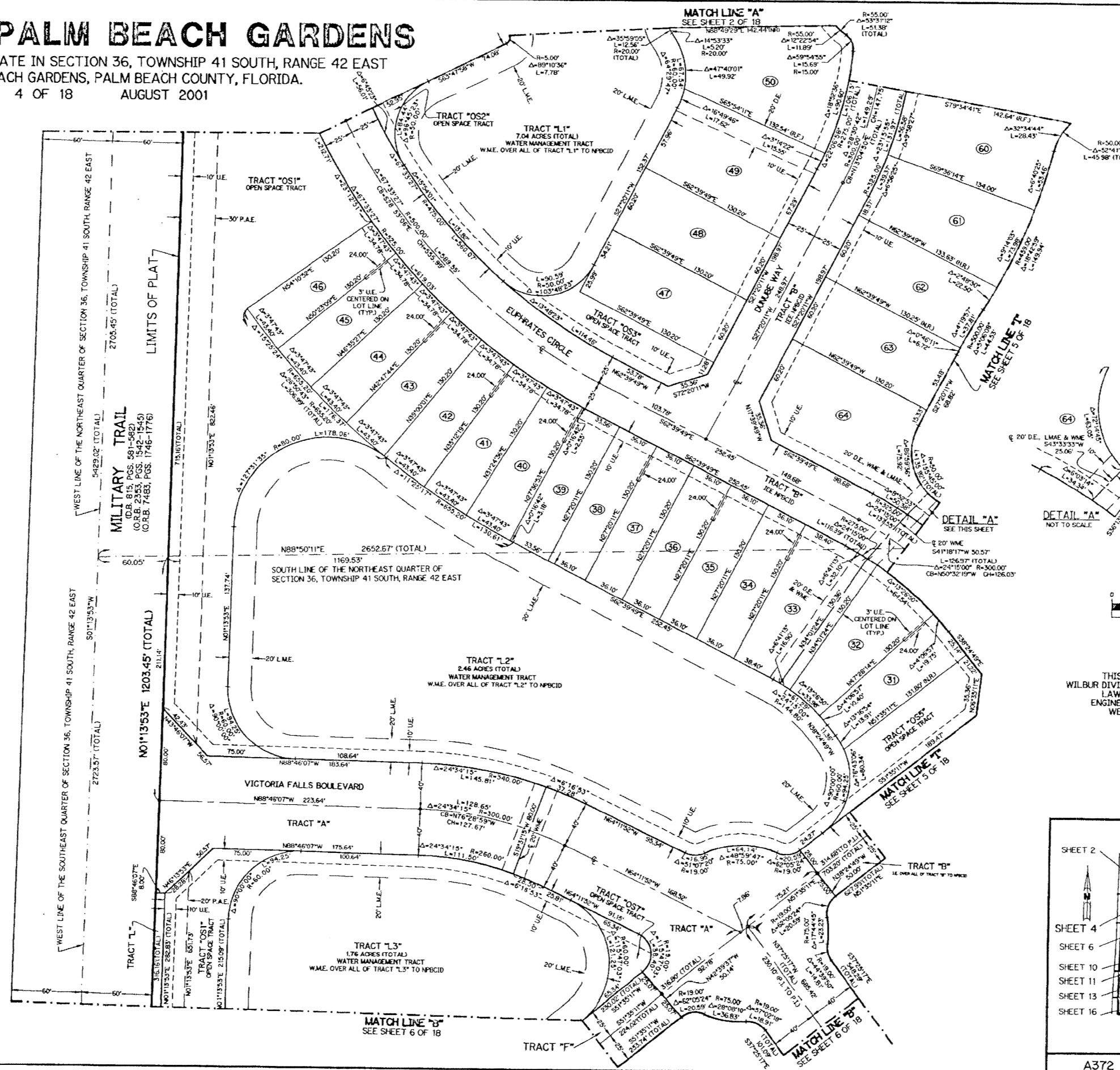
188

NOTE:

COORDINATES SHOWN ARE GRID COORDINATES
DATUM = NAD 83 (1990 ADJUSTMENT)
ZONE = FLORIDA EAST ZONE
LINEAR UNIT = U.S. SURVEY FEET
COORDINATE SYSTEM 1983 STATE PLANE
TRANSVERSE MERCATOR PROJECTION
ALL DISTANCES ARE GROUND
SCALE FACTOR = 1.000037
SR874111E (PLAT BEARING)
SR874111E (GRID BEARING)
ZERO NOTATION, PLAT TO GRID

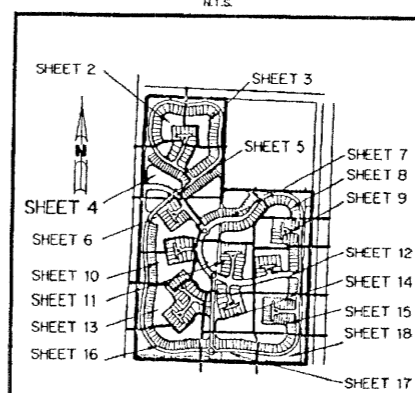
LEGEND:

- - SET PERMANENT REFERENCE MONUMENT NO. L.B. 6674
- - SET PERMANENT CONTROL POINT NO. L.B. 6674
- - SET 5/8" IRON ROD WITH CAP NO. L.B. 6674
- - FOUND PERMANENT REFERENCE MONUMENT
- Δ - DELTA ANGLE
- BT - BUFFER TRACT
- CL - CENTERLINE
- CB - CHORD BEARING
- CH - CHORD
- D.B. - DEED BOOK
- D.E. - DRAINAGE EASEMENT
- L - ARC LENGTH
- L.A.E. - LIMITED ACCESS EASEMENT
- L.M.E. - LAKE MAINTENANCE EASEMENT
- (NRJ) - NON-RADIAL
- N.T.S. - NOT TO SCALE
- PP - PLAT DIMENSION
- P.A.E. - PUBLIC ACCESS EASEMENT
- P.D.E. - PUBLIC DRAINAGE EASEMENT
- OS - OPEN SPACE TRACT
- O.R.B. - OFFICIAL RECORD BOOK
- P.B. - PLAT BOOK
- PGS. - PAGES
- R - RADII
- S.E. - SIDEWALK EASEMENT
- U.E. - UTILITY EASEMENT
- W.S.E. - WATER AND SEWER EASEMENT
- W.P. - RADIAL TO FRONT
- (R.R.) - RADIAL TO REAR
- NPRCID - NORTHERN PALM BEACH COUNTY IMPROVEMENT DISTRICT
- W.M.E. - WATER MANAGEMENT EASEMENT
- W.M.A.E. - WATER MANAGEMENT MAINTENANCE EASEMENT
- W.M.A.C.E. - WATER MANAGEMENT ACCESS EASEMENT
- I.E.E. - INGRESS EGRESS EASEMENT
- L.M.A.E. - LAKE MAINTENANCE ACCESS EASEMENT
- P.I. - POINT OF INTERSECTION



THIS INSTRUMENT PREPARED BY
WILBUR DIVINE, P.S.M. 4190, STATE OF FLORIDA
LAWSON, NOBLE AND WEBB, INC.
ENGINEERS, PLANNERS, SURVEYORS
WEST PALM BEACH, FLORIDA
LB 6674

KEY MAP



A372 SHEET 4 OF 18