

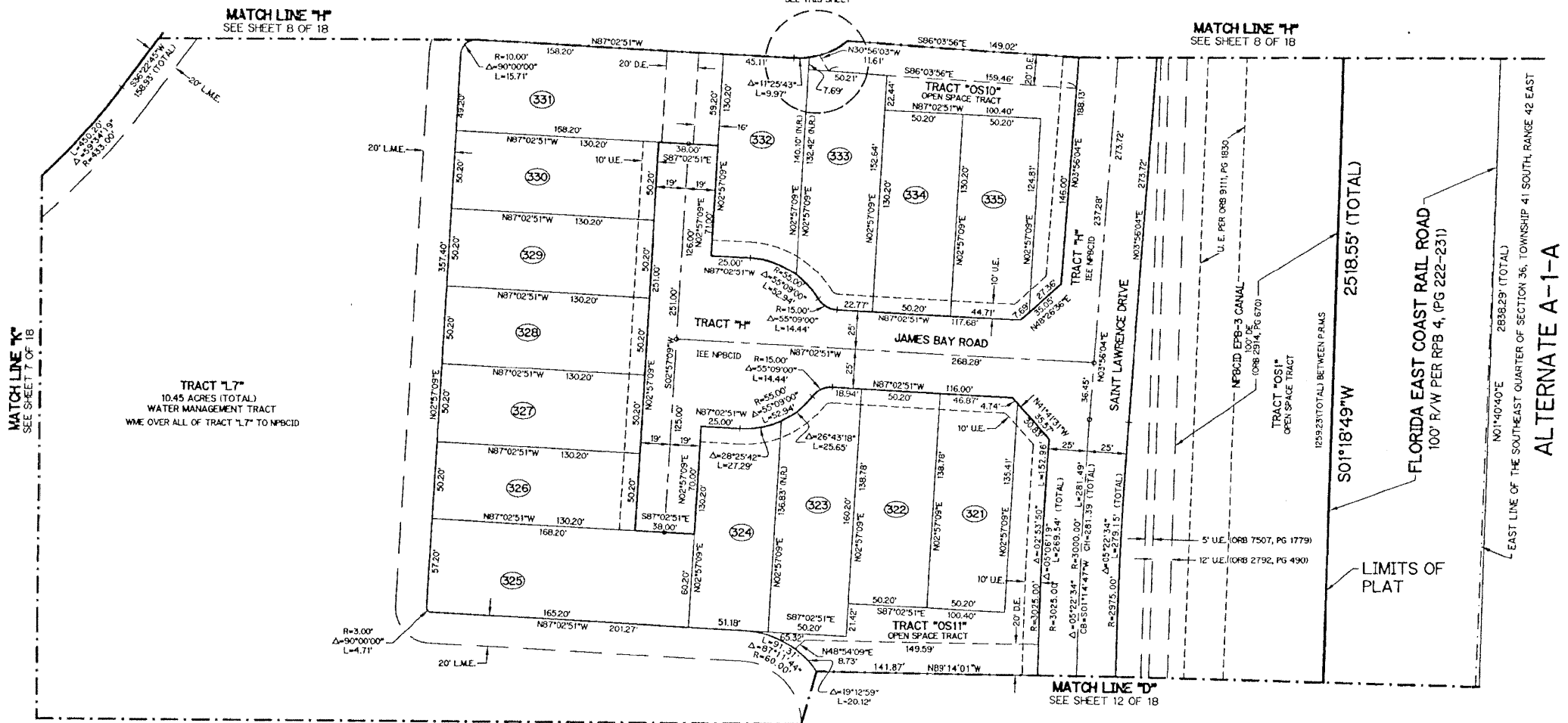
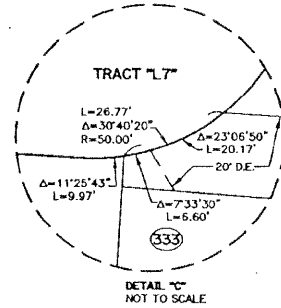
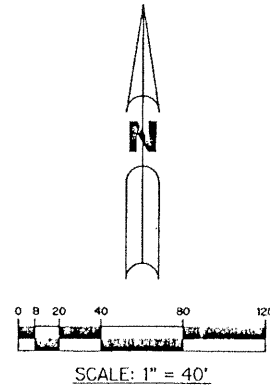
ISLES AT PALM BEACH GARDENS

A PARCEL OF LAND SITUATE IN SECTION 36, TOWNSHIP 41 SOUTH, RANGE 42 EAST
CITY OF PALM BEACH GARDENS, PALM BEACH COUNTY, FLORIDA.
SHEET 9 OF 18 AUGUST 2001

THIS INSTRUMENT PREPARED BY
WILBUR DIVINE, P.S.M. 4190, STATE OF FLORIDA
LAWSON, NOBLE AND WEBB, INC.
ENGINEERS PLANNERS SURVEYORS
WEST PALM BEACH, FLORIDA
LB 6674

LEGEND:

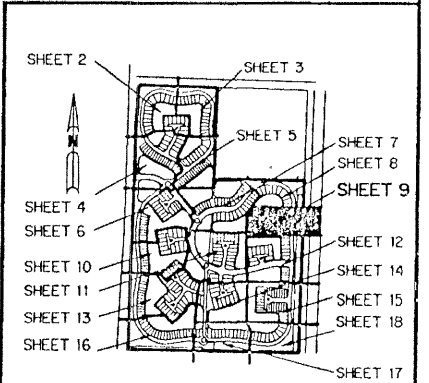
- - SET PERMANENT REFERENCE MONUMENT NO. L.B. 6674
- - SET PERMANENT CONTROL POINT NO. L.B. 6674
- - SET 5/8" IRON ROD WITH CAP NO. L.B. 6674
- - FOUND PERMANENT REFERENCE MONUMENT
- Δ - DELTA ANGLE
- BT - BUFFER TRACT
- CL - CENTERLINE
- CB - CHORD BEARING
- CH - CHORD
- DB - DEED BOOK
- D.E. - DRAINAGE EASEMENT
- L - ARC LENGTH
- L.A.E. - LIMITED ACCESS EASEMENT
- L.M.E. - LAKE MAINTENANCE EASEMENT
- (N.R.) - NON-RADIAL
- N.T.S. - NOT TO SCALE
- (P) - PLAT DIMENSION
- P.A.E. - PUBLIC ACCESS EASEMENT
- P.D.E. - PUBLIC DRAINAGE EASEMENT
- OS - OPEN SPACE TRACT
- O.R.B. - OFFICIAL RECORD BOOK
- P.B. - PLAT BOOK
- PGS. - PAGES
- R - RADIUS
- S.E. - SIDEWALK EASEMENT
- U.E. - UTILITY EASEMENT
- W.S.E. - WATER AND SEWER EASEMENT
- (R.F.) - RADIAL TO FRONT
- (R.R.) - RADIAL TO REAR
- NPBCID - NORTHERN PALM BEACH COUNTY IMPROVEMENT DISTRICT
- W.M.E. - WATER MANAGEMENT EASEMENT
- W.M.A.E. - WATER MANAGEMENT MAINTENANCE EASEMENT
- W.M.A.C. - WATER MANAGEMENT ACCESS EASEMENT
- I.E. - INGRESS EGRESS EASEMENT
- L.M.A.E. - LAKE MAINTENANCE ACCESS EASEMENT
- P.I. - POINT OF INTERSECTION



NOTE:

COORDINATES SHOWN ARE GRID COORDINATES
 DATUM = NAD 83 (1990 ADJUSTMENT)
 ZONE = FLORIDA EAST ZONE
 LINEAR UNIT = U.S. SURVEY FEET
 COORDINATE SYSTEM 1983 STATE PLANE
 TRANSVERSE MERCATOR PROJECTION
 ALL DISTANCES ARE GROUND
 SCALE FACTOR = 1.0000397
 SB8°41'11" (PLAT BEARING)
 SB8°41'11" (GRID BEARING)
 ZERO ROTATION, PLAT TO GRID

KEY MAP



G:\DATA\300-399\A372\CAD\A372PL09.dwg 08/29/2001 04:10:08 PM EDT