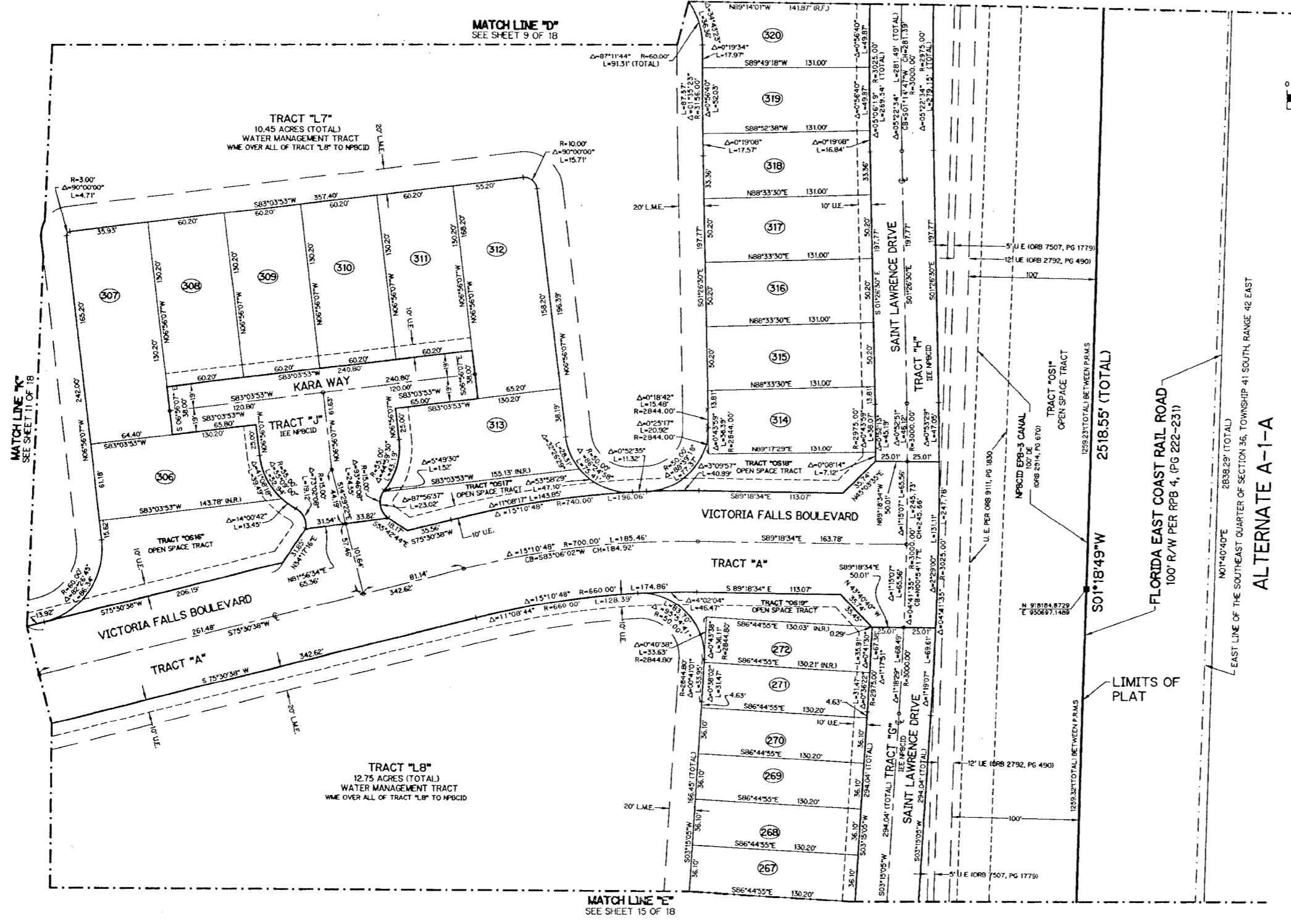
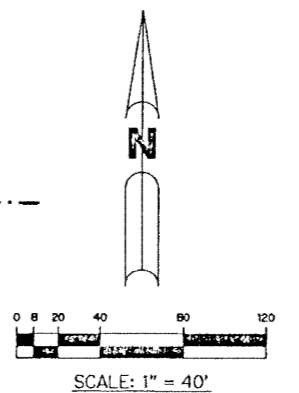


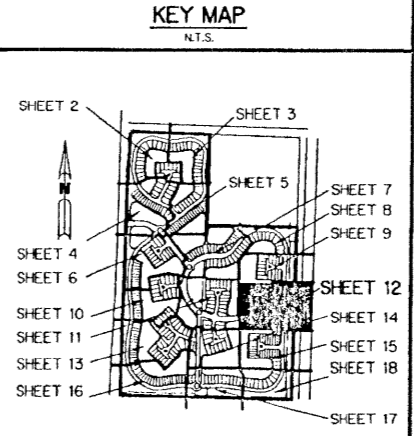
ISLES AT PALM BEACH GARDENS

A PARCEL OF LAND SITUATE IN SECTION 36, TOWNSHIP 41 SOUTH, RANGE 42 EAST
CITY OF PALM BEACH GARDENS, PALM BEACH COUNTY, FLORIDA.
SHEET 12 OF 18 AUGUST 2001

THIS INSTRUMENT PREPARED BY
WILBUR DIXIE, P.S.M. 4190, STATE OF FLORIDA
LAWSON, NOBLE AND WEBB, INC.
ENGINEERS, PLANNERS, SURVEYORS
WEST PALM BEACH, FLORIDA
LB 6674



- LEGEND:**
- - SET PERMANENT REFERENCE MONUMENT NO. LB. 6674
 - - SET PERMANENT CONTROL POINT NO. LB. 6674
 - - SET 3/4" IRON ROD WITH CAP NO. LB. 6674
 - - FOUND PERMANENT REFERENCE MONUMENT
 - Δ - DELTA ANGLE
 - BT - BUFFER TRACT
 - C - CENTERLINE
 - CB - CHORD BEARING
 - CA - CHORD
 - DB - DEED BOOK
 - D.E. - DRAINAGE EASEMENT
 - L - ARC LENGTH
 - L.A.E. - LIMITED ACCESS EASEMENT
 - L.M.E. - LAKE MAINTENANCE EASEMENT
 - NRJ - NON-RADIAL
 - N.T.S. - NOT TO SCALE
 - (P) - PLAT DIMENSION
 - P.A.E. - PUBLIC ACCESS EASEMENT
 - P.D.E. - PUBLIC DRAINAGE EASEMENT
 - OS - OPEN SPACE TRACT
 - O.R.B. - OFFICIAL RECORD BOOK
 - P.B. - PLAT BOOK
 - PGS. - PAGES
 - R - RADIUS
 - SE - SIDEWALK EASEMENT
 - U.E. - UTILITY EASEMENT
 - W.S.E. - WATER AND SEWER EASEMENT
 - WFJ - RADIAL TO FRONT
 - (WR) - RADIAL TO REAR
 - NRPCID - NORTHERN PALM BEACH COUNTY IMPROVEMENT DISTRICT
 - W.M.E. - WATER MANAGEMENT EASEMENT
 - W.M.W. - WATER MANAGEMENT MAINTENANCE EASEMENT
 - W.M.A.E. - WATER MANAGEMENT ACCESS EASEMENT
 - W.E. - WATER EASEMENT
 - W.M.A.E. - WATER MANAGEMENT ACCESS EASEMENT
 - W.M.M.E. - WATER MANAGEMENT MAINTENANCE EASEMENT
 - W.M.A.E. - WATER MANAGEMENT ACCESS EASEMENT
 - W.M.E. - WATER EASEMENT
 - L.M.E. - LAKE MAINTENANCE EASEMENT
 - P.I. - POINT OF INTERSECTION
- NOTE:**
- COORDINATES SHOWN ARE GRID COORDINATES
 - DATUM - NAD 83 (1990 ADJUSTMENT)
 - ZONE - FLORIDA EAST ZONE
 - LINEAR UNIT - U.S. SURVEY FEET
 - COORDINATE SYSTEM 1983 STATE PLANE
 - TRANSVERSE MERCATOR PROJECTION
 - ALL DISTANCES ARE GRID
 - SCALE FACTOR = 1.0000397
 - SRB#1717E PLAT BEARING
 - SRB#1717E GRID BEARING
 - ZERO ROTATION PLAT TO GRID



C:\DATA\300-395\A372\A372P12.dwg 08/29/2001 09:03:06 PM EDT