

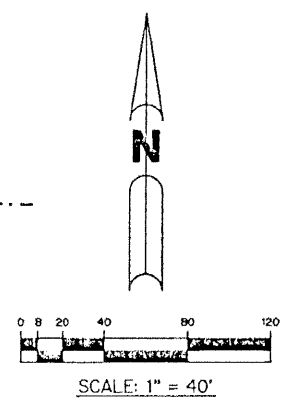
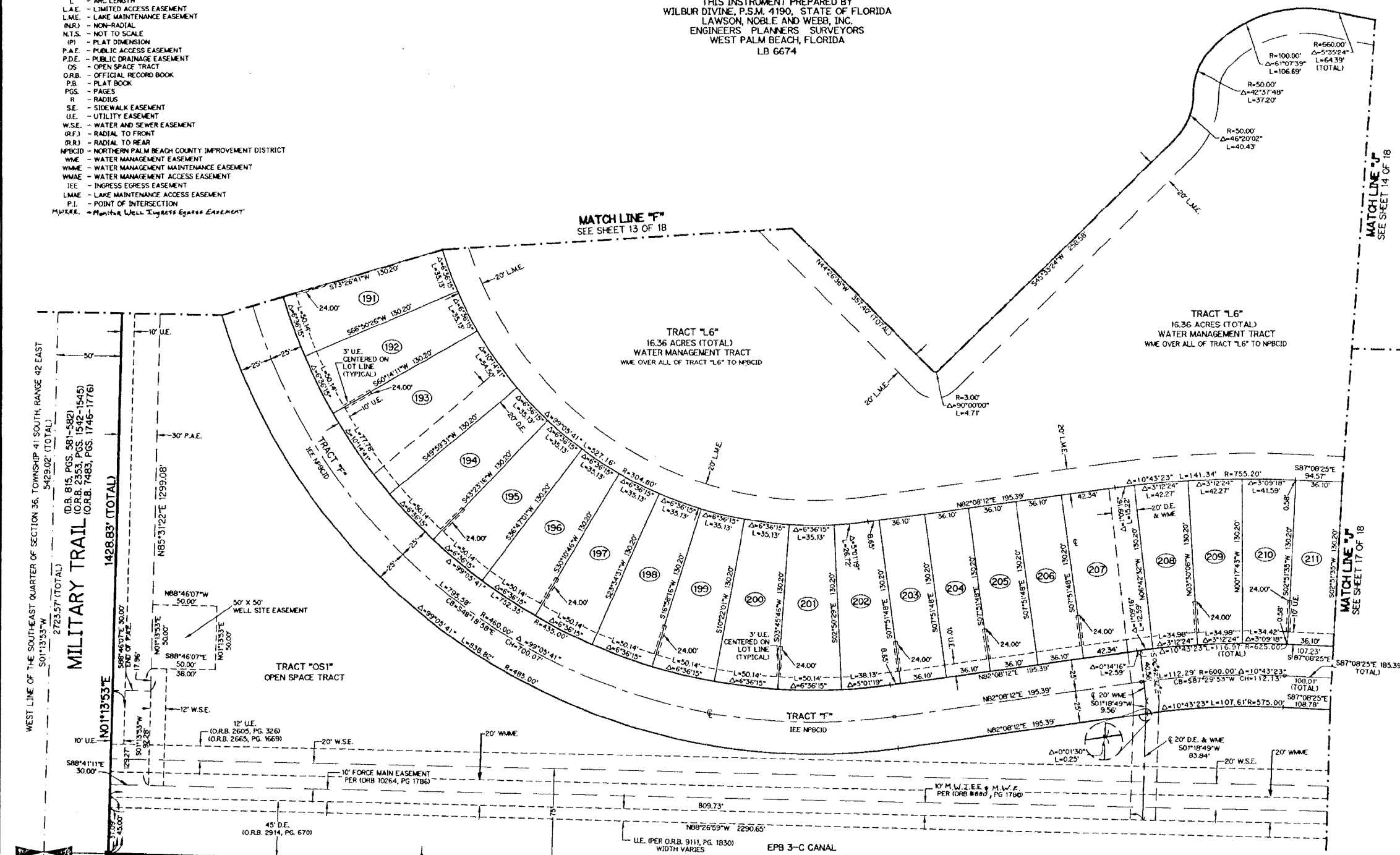
LEGEND:

- - SET PERMANENT REFERENCE MONUMENT NO. L.B. 6674
- - SET PERMANENT CONTROL POINT NO. L.B. 6674
- - SET 5/8" IRON ROD WITH CAP NO. L.B. 6674
- - FOUND PERMANENT REFERENCE MONUMENT
- Δ - DELTA ANGLE
- BT - BUFFER TRACT
- CL - CENTERLINE
- CB - CHORD BEARING
- CH - CHORD
- D.B. - DEED BOOK
- D.E. - DRAINAGE EASEMENT
- L - ARC LENGTH
- L.A.E. - LIMITED ACCESS EASEMENT
- L.M.E. - LAKE MAINTENANCE EASEMENT
- N.R. - NON-RADIAL
- N.T.S. - NOT TO SCALE
- (PI) - PLAT DIMENSION
- P.A.E. - PUBLIC ACCESS EASEMENT
- P.D.E. - PUBLIC DRAINAGE EASEMENT
- OS - OPEN SPACE TRACT
- O.R.B. - OFFICIAL RECORD BOOK
- P.B. - PLAT BOOK
- PGS. - PAGES
- R - RADIUS
- S.E. - SIDEWALK EASEMENT
- U.E. - UTILITY EASEMENT
- W.S.E. - WATER AND SEWER EASEMENT
- R.F. - RADIAL TO FRONT
- R.R. - RADIAL TO REAR
- N.P.B.C.D. - NORTHERN PALM BEACH COUNTY IMPROVEMENT DISTRICT
- W.M.E. - WATER MANAGEMENT EASEMENT
- W.M.M.E. - WATER MANAGEMENT MAINTENANCE EASEMENT
- W.M.A.E. - WATER MANAGEMENT ACCESS EASEMENT
- I.E. - IMPRESS EGRESS EASEMENT
- L.M.A.E. - LAKE MAINTENANCE ACCESS EASEMENT
- P.I. - POINT OF INTERSECTION
- M.W.I.E.E. - MOUND WELL IMPRESS EGRESS EASEMENT

ISLES AT PALM BEACH GARDENS

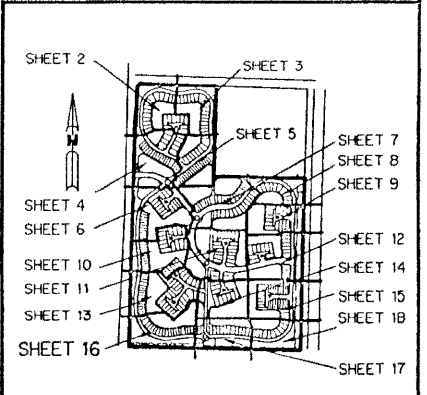
A PARCEL OF LAND SITUATE IN SECTION 36, TOWNSHIP 41 SOUTH, RANGE 42 EAST
 CITY OF PALM BEACH GARDENS, PALM BEACH COUNTY, FLORIDA.
 SHEET 16 OF 18 AUGUST 2001

THIS INSTRUMENT PREPARED BY
 WILBUR DIVINE, P.S.M. 4190, STATE OF FLORIDA
 LAWSON, NOBLE AND WEBB, INC.
 ENGINEERS PLANNERS SURVEYORS
 WEST PALM BEACH, FLORIDA
 LB 6674



NOTE:
 COORDINATES SHOWN ARE GRID COORDINATES
 DATUM = NAD 83 (1990 ADJUSTMENT)
 ZONE = FLORIDA EAST ZONE
 LINEAR UNIT = U.S. SURVEY FEET
 COORDINATE SYSTEM 1983 STATE PLANE
 TRANSVERSE MERCATOR PROJECTION
 ALL DISTANCES ARE GROUND
 SCALE FACTOR = 1.0000197
 SB87°41'11" (PLAT BEARING)
 SB87°41'11" (GRID BEARING)
 ZERO ROTATION, PLAT TO GRID

KEY MAP



WEST LINE OF THE SOUTHEAST QUARTER OF SECTION 36, TOWNSHIP 41 SOUTH, RANGE 42 EAST
 5429.02' (TOTAL)
 (D.B. 815, PGS. 581-582)
 (O.R.B. 2533, PGS. 1542-1545)
 (O.R.B. 1463, PGS. 1746-1776)
MILITARY TRAIL
 1428.83' (TOTAL)

SOUTHWEST CORNER OF THE
 SOUTHEAST QUARTER CORNER OF
 SECTION 36, TOWNSHIP 41
 SOUTH, RANGE 42 EAST

PLAT OF
 MIRAMAR TOWNSHIP
 P.B. 38, PGS. 107&108

REPLAT NO. 1 OF
 PLAT NO. 4
 CITY OF PALM
 BEACH GARDENS
 P.B. 32, PGS. 186 & 187

TRACT 10A
 BLOCK 33
 N88°41'11"W
 2491.47' TOTAL

LOT 9
 12' EASEMENT
 (P.B. 32, PG. 186)

LOT 8

LOT 7
 12' D.E.
 (P.B. 32, PG. 186)

LOT 6
 BLOCK 33
 PLAT NO. 4
 CITY OF PALM
 BEACH GARDENS
 P.B. 27, PGS. 4-6

G:\DATA\300-999\A372\CAD\A372PL16.dwg 07/25/2001 09:42:12 AM EDT