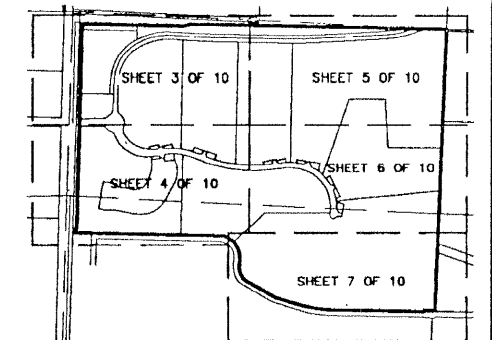
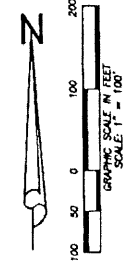


FRENCHMAN'S RESERVE PCD - PLAT ONE

BEING A PARCEL OF LAND LYING IN SECTIONS 31,
TOWNSHIP 41 SOUTH, RANGE 43 EAST, CITY OF PALM BEACH
GARDENS PALM BEACH COUNTY, FLORIDA.

AUGUST, 2001 SHEET 4 OF 10

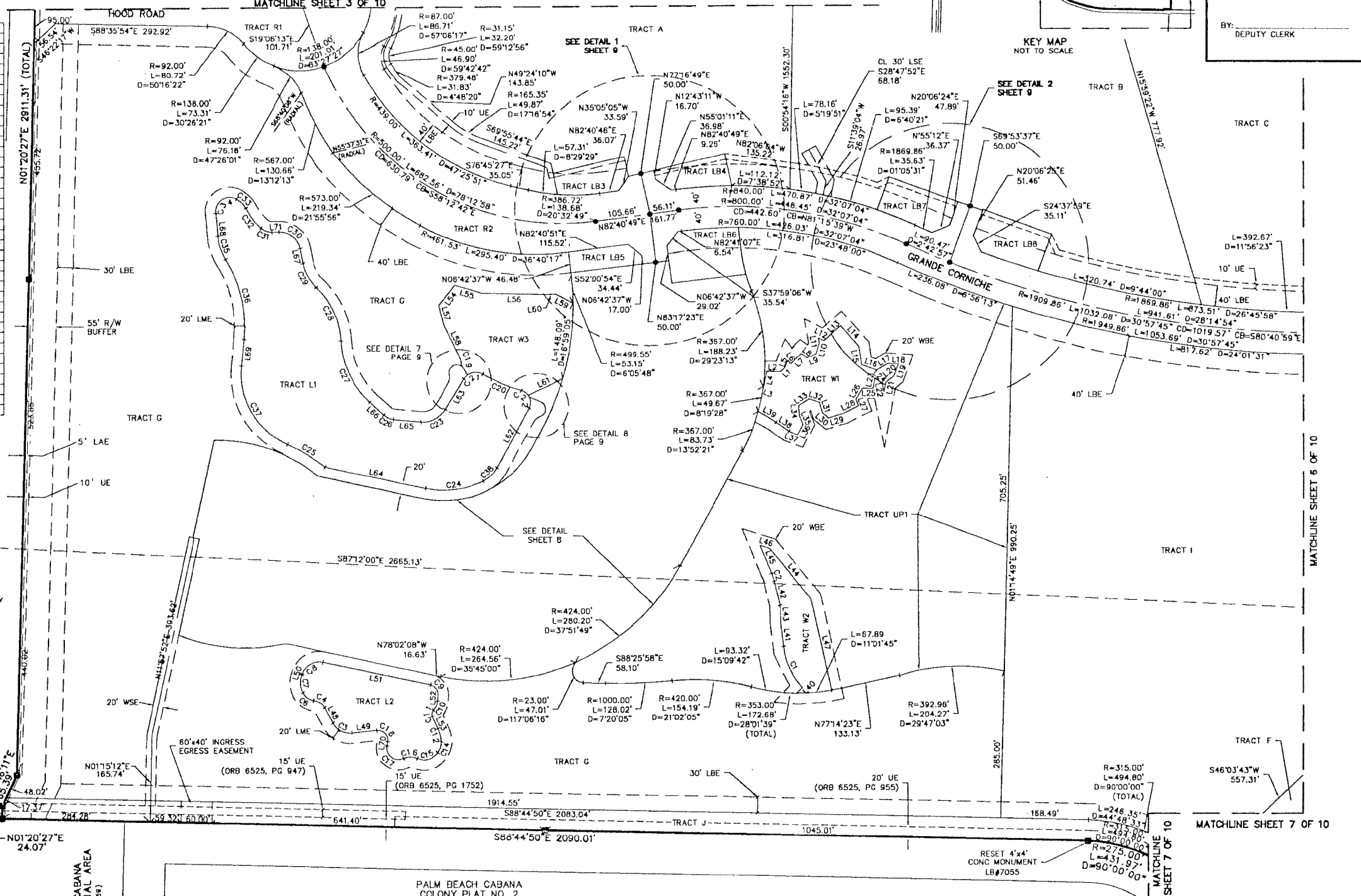


STATE OF FLORIDA
COUNTY OF PALM BEACH
THIS PLAT WAS FILED FOR
RECORD AT _____ M.
THIS _____ DAY OF _____
A.D. 2001 AND DULY RECORDED
IN PLAT BOOK _____ ON
PAGE _____ AND _____
DOROTHY H. WILKEN
CLERK CIRCUIT COURT

BY: _____
DEPUTY CLERK

LINE	BEARING	LENGTH	CURVE	LENGTH	RADIUS	DELTA
L1	S47°19'13"W	9.97	C1	87.91	140.00	35°56'43"
L2	N88°59'34"W	27.14	C2	15.61	100.00	8°56'28"
L3	N66°32'49"W	1.16	C3	44.08	36.67	68°52'43"
L4	S10°52'55"W	29.91	C4	26.00	25.86	58°02'55"
L5	S21°35'04"W	16.62	C5	27.30	29.20	53°33'39"
L6	N35°51'37"W	9.29	C7	34.24	41.71	47°02'35"
L7	S44°54'41"W	28.81	C8	50.34	35.00	82°24'14"
L8	N52°28'17"W	14.39	C9	27.00	19.00	81°24'41"
L9	S66°47'05"W	18.56	C10	19.71	25.70	43°58'54"
L10	S16°25'35"W	22.01	C11	14.40	11.25	73°20'28"
L11	S69°58'01"E	10.30	C12	26.85	67.83	27°40'56"
L12	N62°14'49"W	11.91	C14	22.34	31.49	40°39'46"
L13	S49°48'45"W	43.18	C15	45.76	30.65	85°32'06"
L14	N41°19'02"W	53.08	C16	26.92	30.00	51°24'59"
L15	N08°43'37"W	35.78	C17	50.23	23.00	125°07'10"
L16	N69°28'16"W	31.20	C18	35.12	19.00	105°54'18"
L17	S57°47'53"W	25.11	C19	19.43	45.00	24°44'04"
L18	N86°11'24"W	20.02	C20	81.03	311.12	14°55'22"
L19	N19°48'10"E	23.98	C21	42.25	27.00	89°39'42"
L20	N50°39'27"E	20.45	C22	42.89	24.00	102°23'27"
L21	N10°10'49"E	18.41	C23	55.92	50.00	64°05'04"
L22	S11°11'48"E	16.19	C24	114.08	170.00	38°28'54"
L23	N12°51'09"E	20.56	C25	85.63	311.62	15°44'38"
L24	S50°52'25"E	17.94	C26	21.24	32.00	38°01'50"
L25	S89°11'57"E	20.25	C27	134.30	175.00	43°58'10"
L26	N30°17'15"E	24.65	C28	116.48	154.70	43°08'16"
L27	N21°34'25"E	14.20	C29	54.84	89.00	35°18'08"
L28	N63°46'52"E	34.28	C30	56.21	40.00	80°30'53"
L29	N73°33'16"E	28.52	C31	22.62	30.00	43°11'57"
L30	S48°46'00"E	15.15	C32	48.11	126.10	21°51'33"
L31	S17°29'03"E	21.40	C33	25.52	49.43	29°34'43"
L32	S70°12'52"E	20.53	C34	60.42	27.00	128°13'17"
L33	N55°34'31"E	24.51	C35	47.85	100.00	27°24'54"
L34	N06°19'07"W	19.95	C36	162.66	250.00	37°16'45"
L35	N23°05'02"W	17.18	C37	187.61	150.00	71°39'41"
L36	N78°19'50"E	22.22	C38	37.18	60.00	35°30'13"
L37	S70°05'09"E	18.44				
L38	S54°08'38"E	30.63				
L39	S59°05'22"E	40.13				
L40	N45°36'32"E	15.51				
L41	N07°04'03"W	53.49				
L42	N13°29'43"W	44.21				
L43	N01°37'09"W	35.21				
L44	S39°12'05"E	126.25				
L45	N22°26'11"W	55.92				
L46	S72°08'20"E	19.07				
L47	S12°47'17"E	182.54				
L48	S27°40'17"E	34.18				
L49	N83°27'10"E	47.74				
L50	S19°33'38"W	3.52				
L51	N78°02'08"W	211.08				
L52	N03°22'33"E	11.76				
L53	N76°01'02"W	25.13				
L54	N17°51'14"E	49.20				
L55	S73°29'25"E	55.29				
L56	S88°34'13"E	123.89				
L57	N13°55'44"W	38.46				
L58	N25°44'15"W	72.08				
L59	S62°31'08"E	38.48				
L60	N85°27'31"E	17.10				
L61	S64°24'45"W	73.28				
L62	S28°00'44"W	131.72				
L63	S30°52'56"W	68.31				
L64	S78°02'08"E	197.51				
L65	N85°02'00"W	52.62				
L66	N47°00'10"W	36.47				
L67	N10°52'07"W	29.02				
L68	S04°16'21"E	26.34				
L69	S05°35'30"W	52.16				
L70	S09°21'28"W	8.85				
L71	S88°37'00"W	14.45				

- LEGEND:**
- CL - CENTERLINE
 - WSE - WATER AND SEWER EASEMENT
 - PBCD - PALM BEACH COUNTY
 - LAE - LIMITED ACCESS EASEMENT
 - LBE - LANDSCAPE BUFFER EASEMENT
 - LSE - LIFT STATION EASEMENT
 - LME - LAKE MAINTENANCE EASEMENT
 - CMB - COMMISSIONERS' MINUTES BOOK
 - DE - DRAINAGE EASEMENT
 - DB - DEED BOOK
 - FND - FOUND
 - FPL - FLORIDA POWER & LIGHT
 - IP - IRON PIPE
 - IRC - IRON ROD WITH PLASTIC CAP
 - LB - LICENSE BUSINESS
 - LS - LICENSE SURVEY
 - (M) - MEASURED
 - MON - MONUMENT
 - ORB - OFFICIAL RECORD BOOK
 - (P) - PLAT
 - PB - PLAT BOOK
 - POB - POINT OF BEGINNING
 - POC - POINT OF COMMENCEMENT
 - PRM - PERMANENT REFERENCE MONUMENT
 - R/W - RIGHT-OF-WAY
 - RFB - ROAD PLAT BOOK
 - (S) - SURVEY
 - SUC - SEACOAST UTILITY EASEMENT
 - UE - UTILITY EASEMENT
 - PC - PERMANENT CONTROL POINT
 - SET 4"x4" CONCRETE MONUMENT "LB#7055"



Wantman Group, Inc.
Engineering ♦ Surveying ♦ Mapping
901 NORTHPOINT PARKWAY, SUITE 204
WEST PALM BEACH, FL 33407
(561) 687-2220 phone (561) 687-1110 fax
CERT No. 6091 - LB No. 7055

CAD	K:\TOLLBROS\FRENCHMAN\DWG\218PLAT1		
REF			
FLD	RP/AB	FB. 000 PG. 00	JOB 01-218
OFF	AJP/MRJ		DATE 12/05/00
CKD	RBP	SHEET 4 OF 10	DWG 218PLAT1