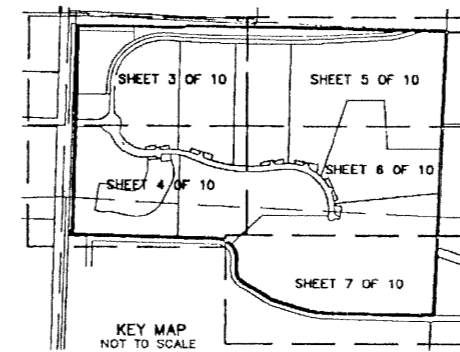
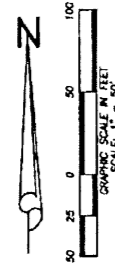


FRENCHMAN'S RESERVE PCD - PLAT ONE

BEING A PARCEL OF LAND LYING IN SECTIONS 31,
TOWNSHIP 41 SOUTH, RANGE 43 EAST, CITY OF PALM BEACH
GARDENS PALM BEACH COUNTY, FLORIDA.

AUGUST, 2001 SHEET 10 OF 10

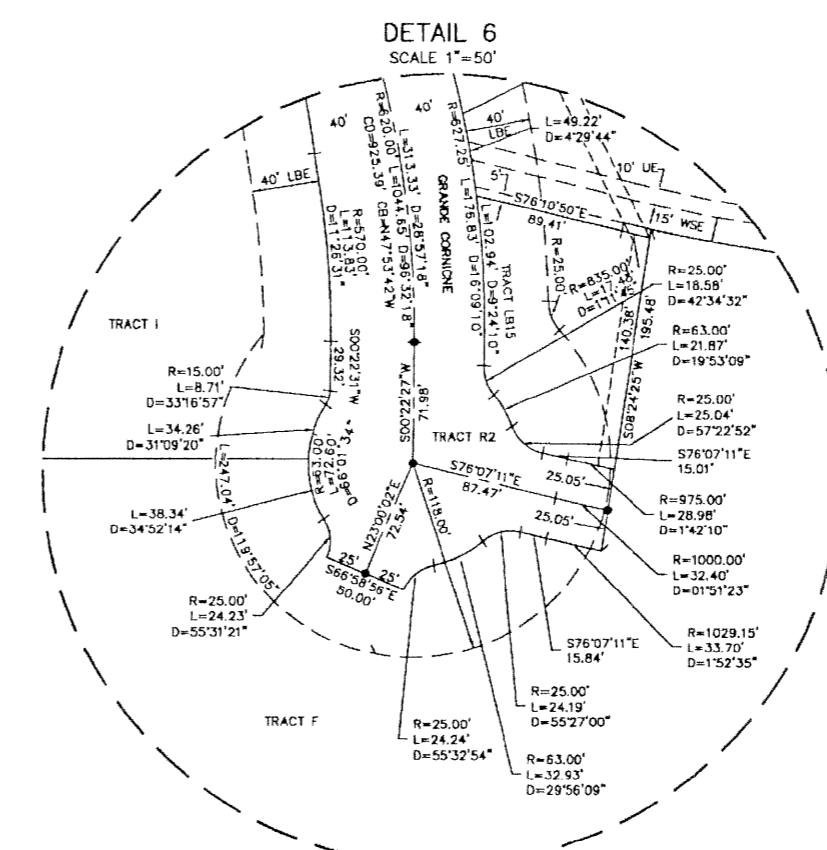
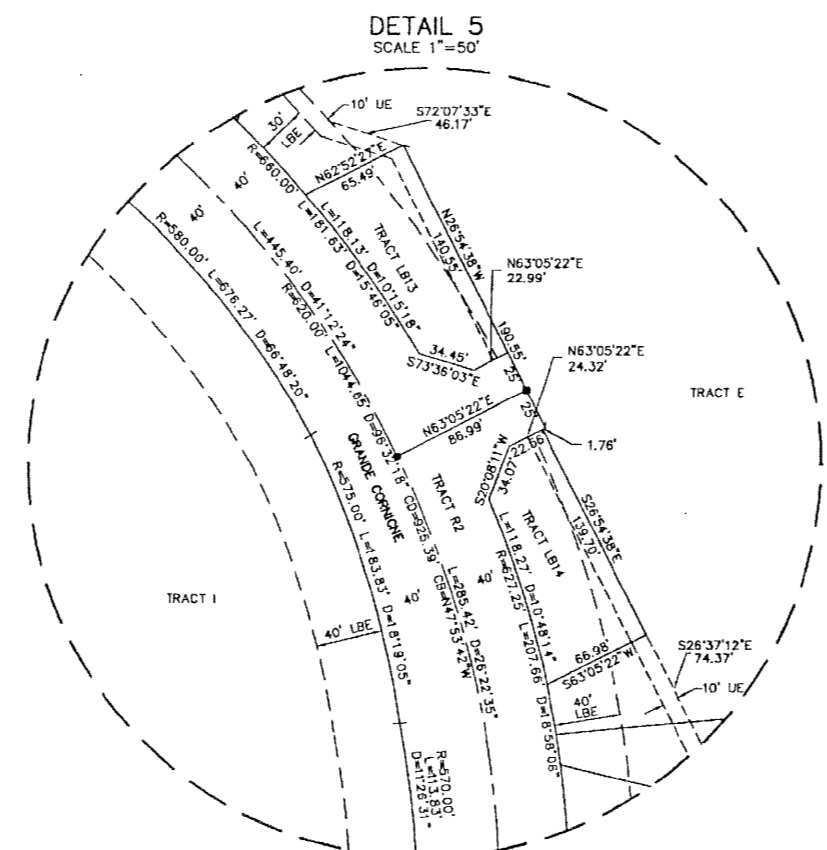
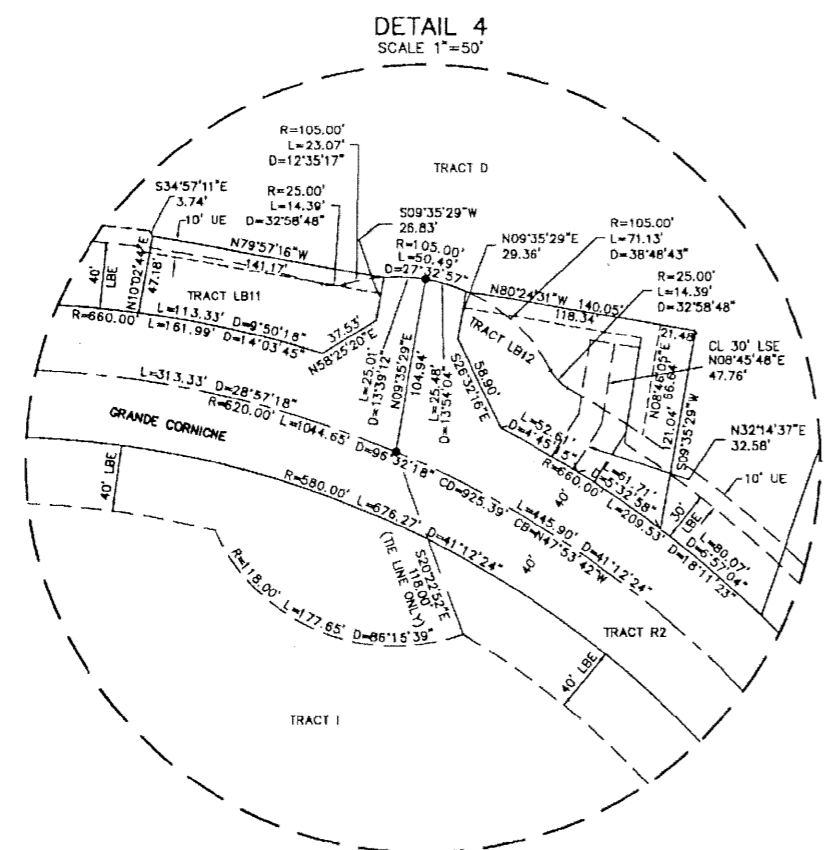


20

STATE OF FLORIDA
COUNTY OF PALM BEACH
THIS PLAT WAS FILED FOR
RECORD AT _____ M.
THIS _____ DAY OF _____
A.D. 2001 AND DULY RECORDED
IN PLAT BOOK _____ ON
PAGES _____ AND _____

DOROTHY H. WILKEN
CLERK CIRCUIT COURT

BY: _____
DEPUTY CLERK



- LEGEND:
- CL = CENTER LINE
 - WSE = WATER AND SEWER EASEMENT
 - PCCO = PALM BEACH COUNTY
 - LAE = LIMITED ACCESS EASEMENT
 - LBE = LANDSCAPE BUFFER EASEMENT
 - LSE = LIFE STATION EASEMENT
 - (C) = CALCULATED
 - CMB = COMMISSIONERS' MINUTES BOOK
 - DE = DRAINAGE EASEMENT
 - DB = DEED BOOK
 - FO = FOUND
 - FPL = FLORIDA POWER & LIGHT
 - IP = IRON PIPE
 - IRC = IRON ROD WITH PLASTIC CAP
 - LB = LICENSE BUSINESS
 - LS = LICENSE SURVEY
 - (M) = MEASURED
 - MON = MONUMENT
 - ORB = OFFICIAL RECORD BOOK
 - PL = PLAT
 - PLB = PLAT BOOK
 - POB = POINT OF BEGINNING
 - POC = POINT OF COMMENCEMENT
 - PRM = PERMANENT REFERENCE MONUMENT
 - R/W = RIGHT-OF-WAY
 - R/PB = ROAD PLAT BOOK
 - SUE = SEACAST UTILITY EASEMENT
 - UE = UTILITY EASEMENT
 - PCP = PERMANENT CONTROL POINT
 - SET 4"x4" CONCRETE MONUMENT
 - "LB77055"

Wantman Group, Inc.
Engineering ♦ Surveying ♦ Mapping
901 NORTHPOINT PARKWAY, SUITE 204
WEST PALM BEACH, FL 33407
(561) 687-2220 phone (561) 687-1110 fax
CERT No. 6091 - LB No. 7055

CAD R:\TOLLBROS\FRENCHMAN\DWG\218PLAT1			
REF			
FID	RP/AB	FB. 000	PG. 00
OFF	AJP/MRJ		DATE 05/16/01
OKD	RBP	SHEET 10 OF 10	DWG 218PLAT1