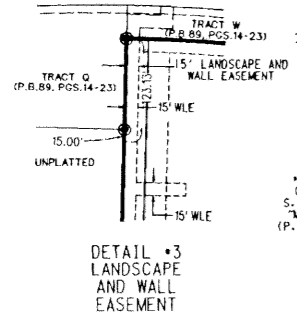
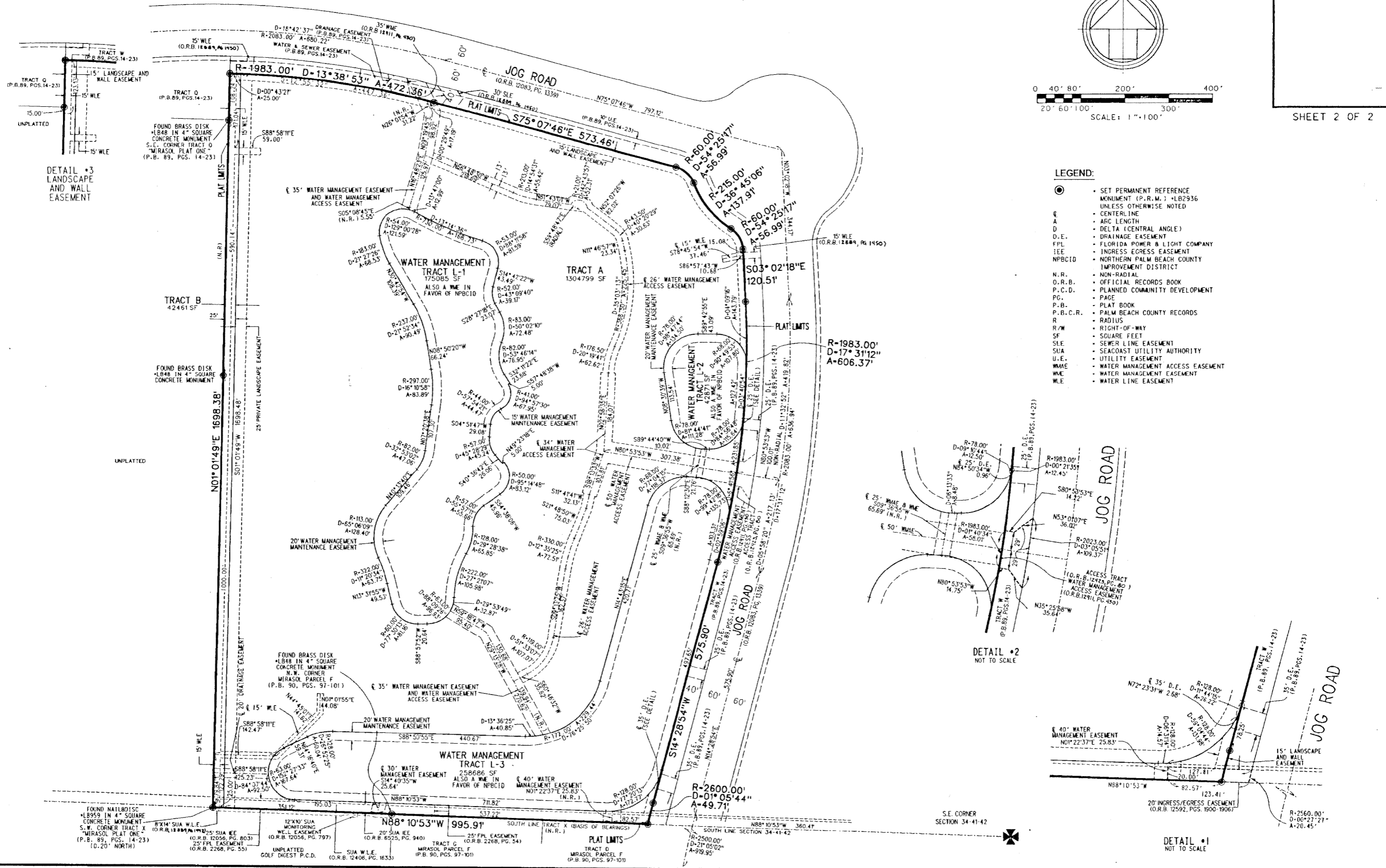
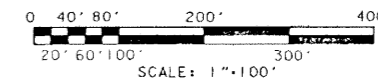
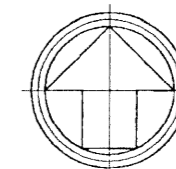
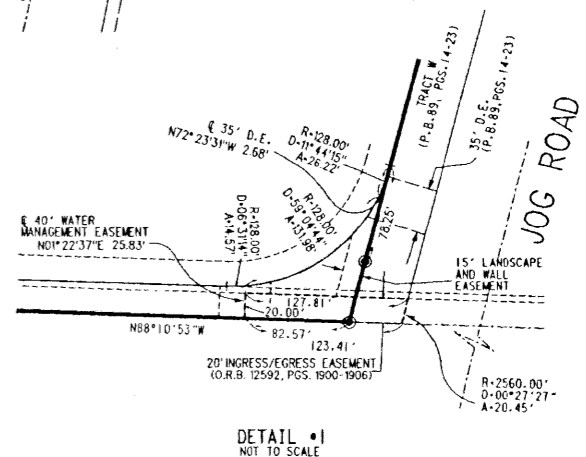
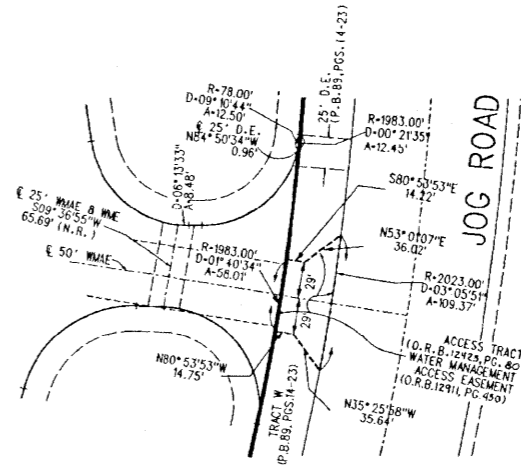


PORTOFINO AT MIRASOL

A REPLAT OF TRACT X, "MIRASOL PLAT ONE" (P.B.89, PGS.14-23, P.B.C.R.),
 SECTION 34, TOWNSHIP 41 SOUTH, RANGE 42 EAST,
 CITY OF PALM BEACH GARDENS, PALM BEACH COUNTY, FLORIDA



- LEGEND:**
- SET PERMANENT REFERENCE MONUMENT (P.R.M.) *LB2936 UNLESS OTHERWISE NOTED
 - CENTERLINE
 - A ARC LENGTH
 - D DELTA (CENTRAL ANGLE)
 - D.E. DRAINAGE EASEMENT
 - FPL FLORIDA POWER & LIGHT COMPANY
 - IEE INGRESS EGRESS EASEMENT
 - IMP IMPROVEMENT DISTRICT
 - NR. NON-RADIAL
 - O.R.B. OFFICIAL RECORDS BOOK
 - P.C.D. PLANNED COMMUNITY DEVELOPMENT
 - PG. PAGE
 - P.B. PLAT BOOK
 - P.B.C.R. PALM BEACH COUNTY RECORDS
 - R. RADIUS
 - R/W. RIGHT-OF-WAY
 - SF. SQUARE FEET
 - SLE. SEWER LINE EASEMENT
 - SUA. SEACOAST UTILITY AUTHORITY
 - U.E. UTILITY EASEMENT
 - WMAE. WATER MANAGEMENT ACCESS EASEMENT
 - WME. WATER MANAGEMENT EASEMENT
 - WLE. WATER LINE EASEMENT



FILE: 01-000705\X00002-40P
 DATE: 29-AUG-01 15:45