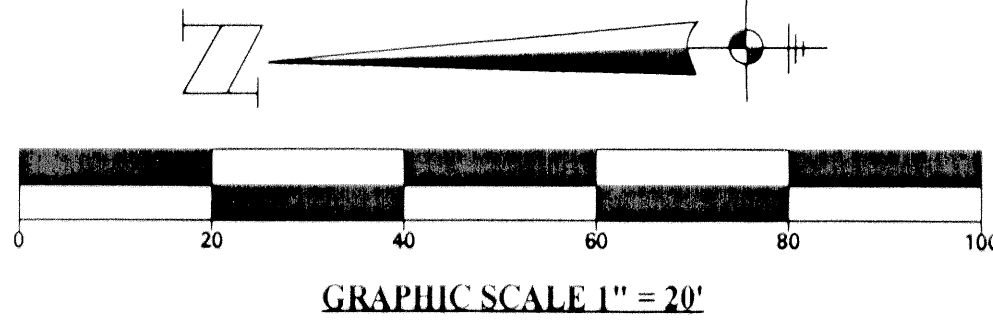
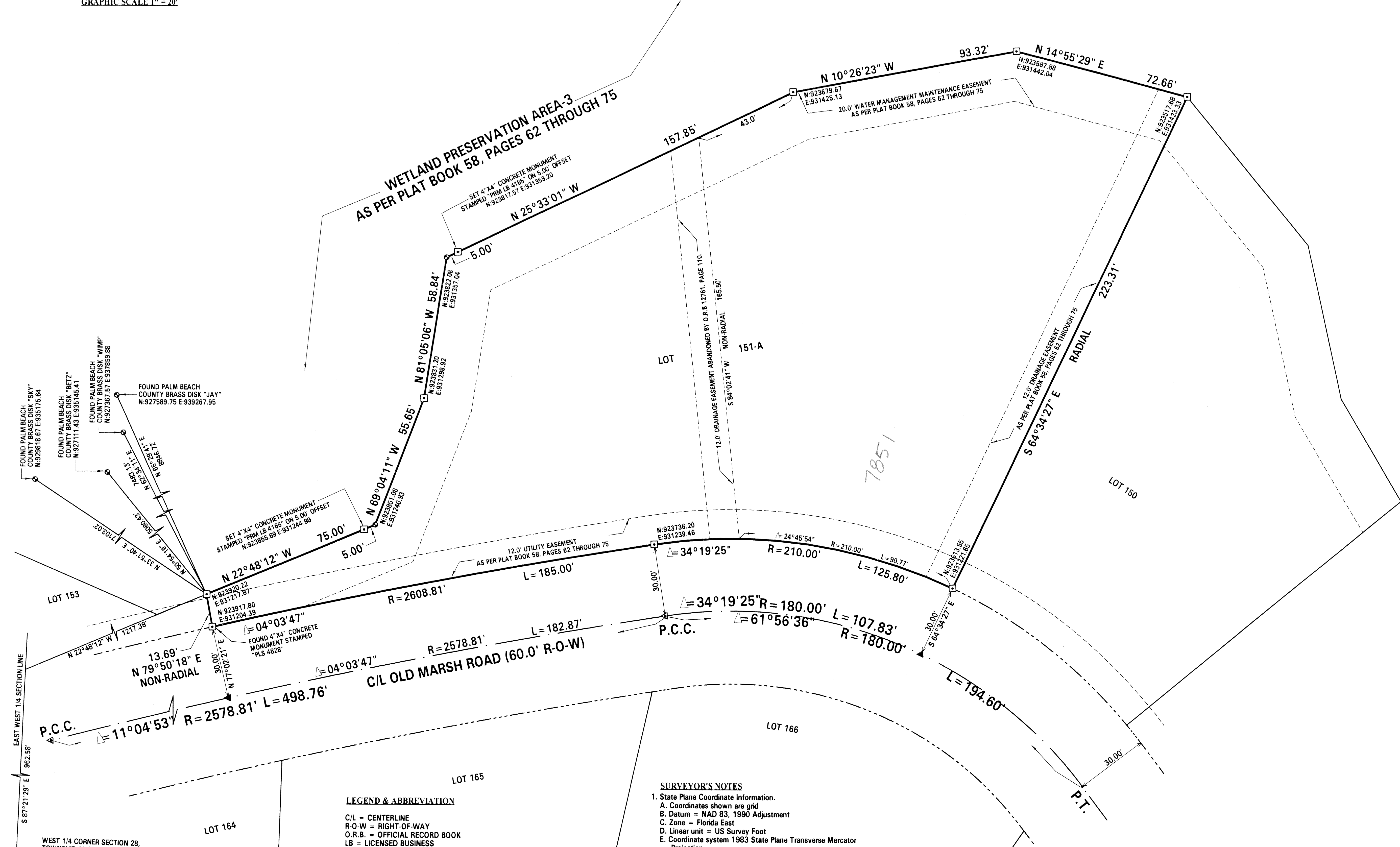


# OLD MARSH GOLF CLUB REPLAT LOTS 151 & 152

BEING A REPLAT OF LOTS 151 AND 152, PLAT OF OLD MARSH GOLF CLUB, A PLANNED UNIT DEVELOPMENT,  
PLAT BOOK 58, PAGES 62 THROUGH 75, LYING IN SECTION 28, TOWNSHIP 41 SOUTH, RANGE 42 EAST, PALM BEACH COUNTY, FLORIDA.  
AUGUST, 2001 SHEET 2 OF 2



WETLAND PRESERVATION AREA-3  
AS PER PLAT BOOK 58, PAGES 62 THROUGH 75



**LEGEND & ABBREVIATION**

C/L = CENTERLINE  
 R-O-W = RIGHT-OF-WAY  
 O.R.B. = OFFICIAL RECORD BOOK  
 LB = LICENSED BUSINESS  
 PRM = PERMANENT REFERENCE MONUMENT  
 PCP = PERMANENT CONTROL POINT  
 PCC = POINT OF COMPOUND CURVATURE  
 PT = POINT OF TANGENT  
 R = RADIUS  
 L = LENGTH OF CURVE  
 Δ = CURVE DELTA  
 ▲ = SET PK NAIL AND DISK STAMPED "PCP LB 4165"  
 □ = SET 4"x4" CONCRETE MONUMENT STAMPED "PRM LB 4165"  
 △ (small) = FOUND PK NAIL AND DISK STAMPED "PCP 959"

**SURVEYOR'S NOTES**

- State Plane Coordinate Information.  
 A. Coordinates shown are grid  
 B. Datum = NAD 83, 1990 Adjustment  
 C. Zone = Florida East  
 D. Linear unit = US Survey Foot  
 E. Coordinate system 1983 State Plane Transverse Mercator Projection  
 F. All distances are ground  
 G. Scale Factor = 1.0000304070  
 H. Ground distance x scale factor = grid distance
- This plat, as recorded in its graphic form, is the official depiction of the subdivided lands described herein and will in no circumstances be supplanted in authority by any other graphic or digital form of the plat.
- There may be additional restrictions that are not recorded on this plat that may be found in the public records of this county.
- 12.0' Utility Easement and 20.0' Water Management Maintenance Easement, as per Plat Book 58, Pages 62 through 75, are retained with this replat.

WEST 1/4 CORNER SECTION 28,  
 TOWNSHIP 41 SOUTH, RANGE  
 42 EAST, PALM BEACH COUNTY  
 BRASS DISK  
 S 01°44'06" W  
 WEST LINE SECTION 28, TOWNSHIP  
 41 SOUTH, RANGE 42 EAST

This instrument was prepared by DONALD D. DANIELS, in the office of DONALD D. DANIELS, INC.

|   |  |   |
|---|--|---|
| <p><b>DONALD D. DANIELS, INC.</b><br/>         Consulting Surveyors &amp; Mappers</p> | <b>OLD MARSH GOLF CLUB REPLAT LOTS 151 &amp; 152</b>   |   |
|   | Florida Certificate LB No. 4165<br>725 North A-1-A, Suite C-111<br>Jupiter, Florida 33477<br>TEL: (561) 747-9894 | REF. 58/62<br>OFFICE: S.F.B.<br>CHECKED: D.D.D. |