

"HESS-CONGRESS-LAKE WORTH"

A REPLAT OF A PORTION OF BLOCK 3 AND BLOCK 6 OF "MILLERS ADDITION" P.B. 16 PAGE 16
SECTION 19, TOWNSHIP 44 SOUTH, RANGE 43 EAST
PALM BEACH COUNTY-FLORIDA

SHEET 2 OF 2 SHEETS

30

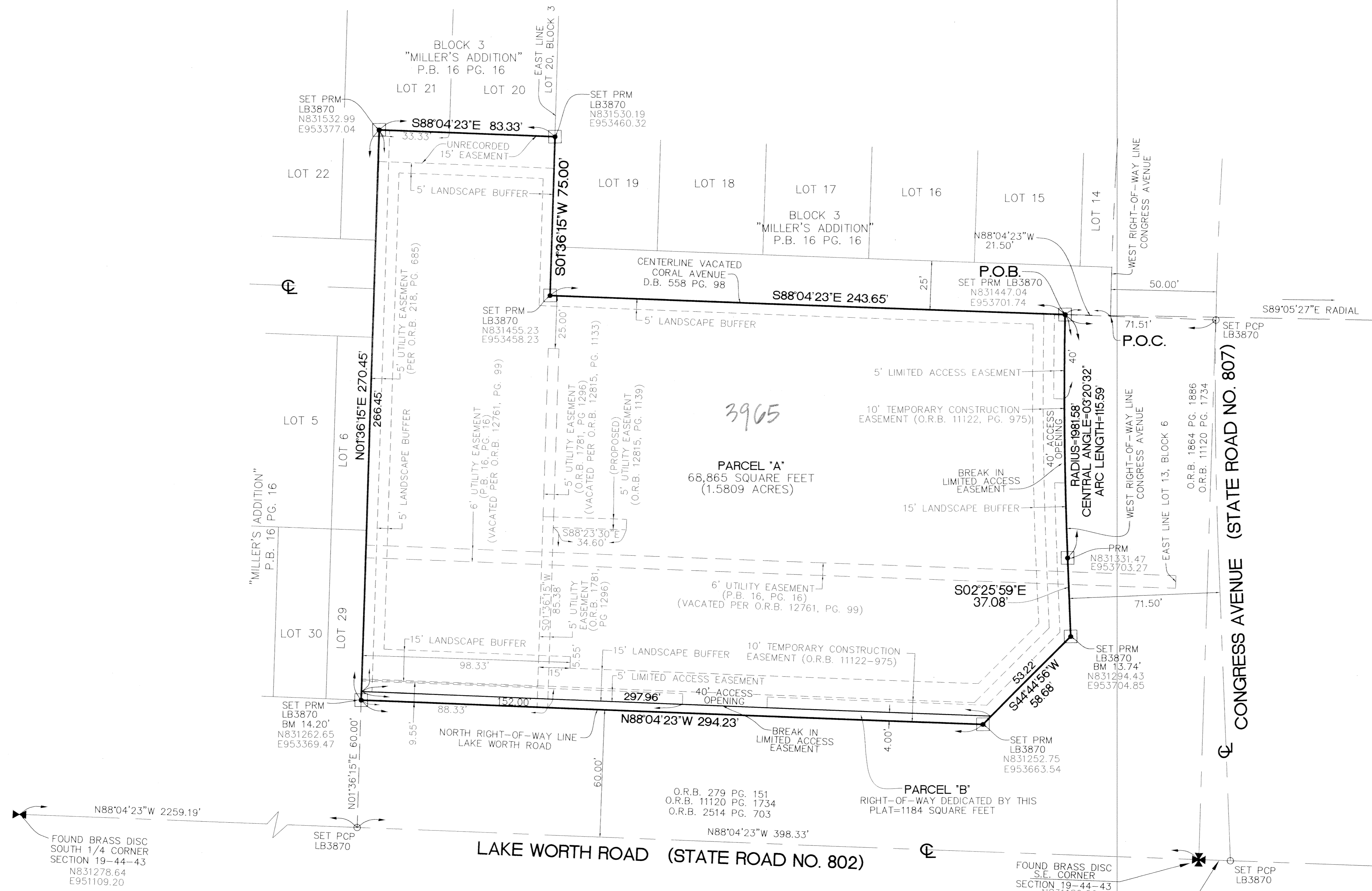
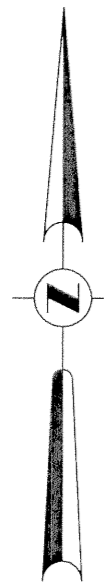
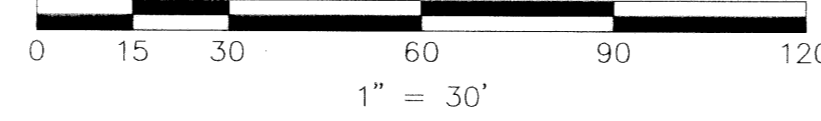
STATE OF FLORIDA
COUNTY OF PALM BEACH
THIS PLAT WAS FILED FOR RECORD AT _____ M.,
THIS _____ DAY OF _____ AND
DULY RECORDED IN PLAT BOOK NUMBER _____
AT PAGE _____
DOROTHY H. WILKEN
CLERK OF THE CIRCUIT COURT

BY: _____
DEPUTY CLERK

PULICE LAND SURVEYORS, INC.

CERTIFICATE OF AUTHORIZATION LB3870
5381 NOB HILL ROAD
SUNRISE, FLORIDA 33351
(954) 572-1777
FAX (954) 572-1778
JULY 1998

GRAPHIC SCALE



Hess Congress
Lake Worth
SUBDIVISION
BOOK 92
PAGE 50
FLOOD MAP # 1057B
ZONING CC
QUAD # 18
TAZ 321
FUD NAME

FOUND BRASS DISC
SOUTH 1/4 CORNER
SECTION 19-44-43
N831278.64
E951109.20

FOUND BRASS DISC
S.E. CORNER
SECTION 19-44-43
N831189.26
E953765.89