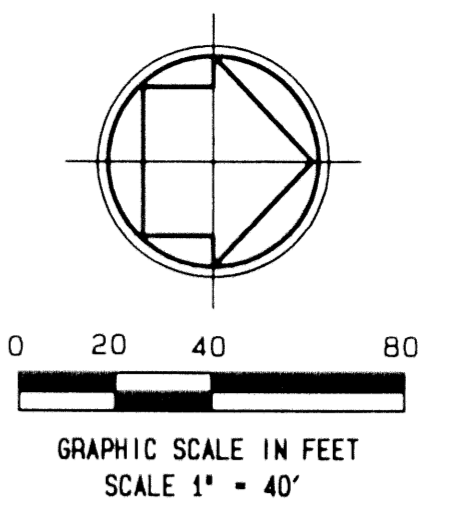


# CRESTWOOD SQUARE

A PORTION OF SECTION 34, TOWNSHIP 43 SOUTH, RANGE 41 EAST

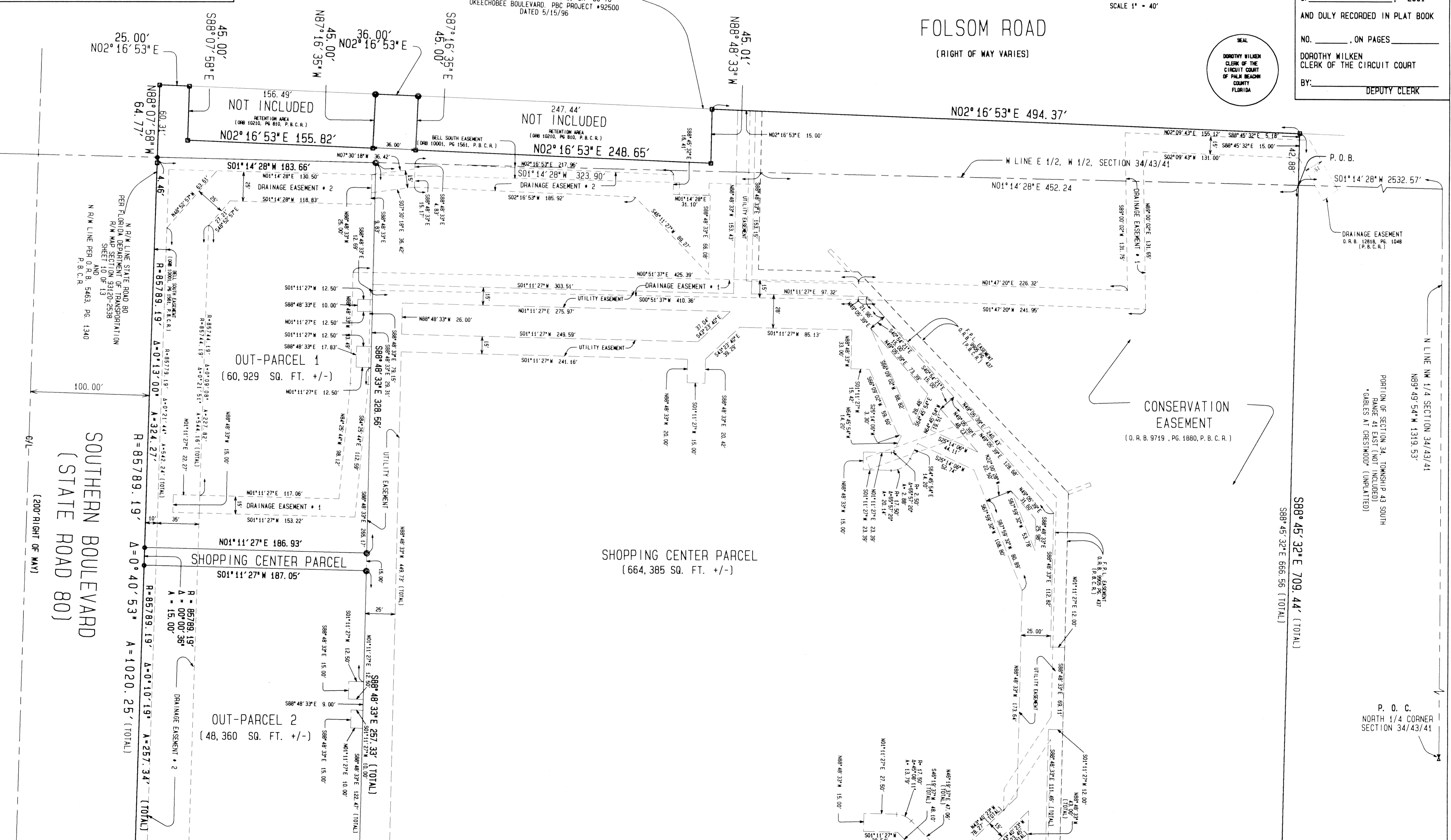
VILLAGE OF ROYAL PALM BEACH  
PALM BEACH COUNTY, FLORIDA

AUGUST, 2001



# 57

STATE OF FLORIDA )  
COUNTY OF PALM BEACH )  
THIS PLAT WAS FILED FOR RECORD  
AT \_\_\_\_\_, THIS \_\_\_\_\_ DAY  
OF \_\_\_\_\_, 2001  
AND DULY RECORDED IN PLAT BOOK  
NO. \_\_\_\_\_, ON PAGES \_\_\_\_\_  
DOROTHY WILKEN  
CLERK OF THE CIRCUIT COURT  
OF PALM BEACH COUNTY  
FLORIDA  
BY: \_\_\_\_\_ DEPUTY CLERK



MATCH LINE - SEE SHEET 4 OF 4

THIS INSTRUMENT WAS PREPARED BY ROBERT D KEENER  
FLORIDA LICENSED SURVEYOR AND MAPPER, LICENSE NO. LS-4846  
IN AND FOR THE OFFICE OF:

**CRAIG A. SMITH & ASSOCIATES**  
CONSULTING ENGINEERS-PLANNERS-SURVEYORS  
242 ROYAL PALM BEACH BOULEVARD  
ROYAL PALM BEACH, FLORIDA 33411  
(561) 791-9280  
CERTIFICATE NO. LS-3110

**CRESTWOOD SQUARE**

PROJ NO 96-0234 CADD FILE 0234P602 DATE 08/08/01 SHEET 3 OF 4