

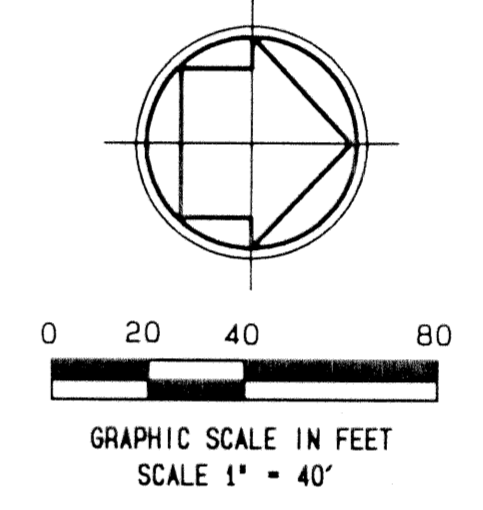
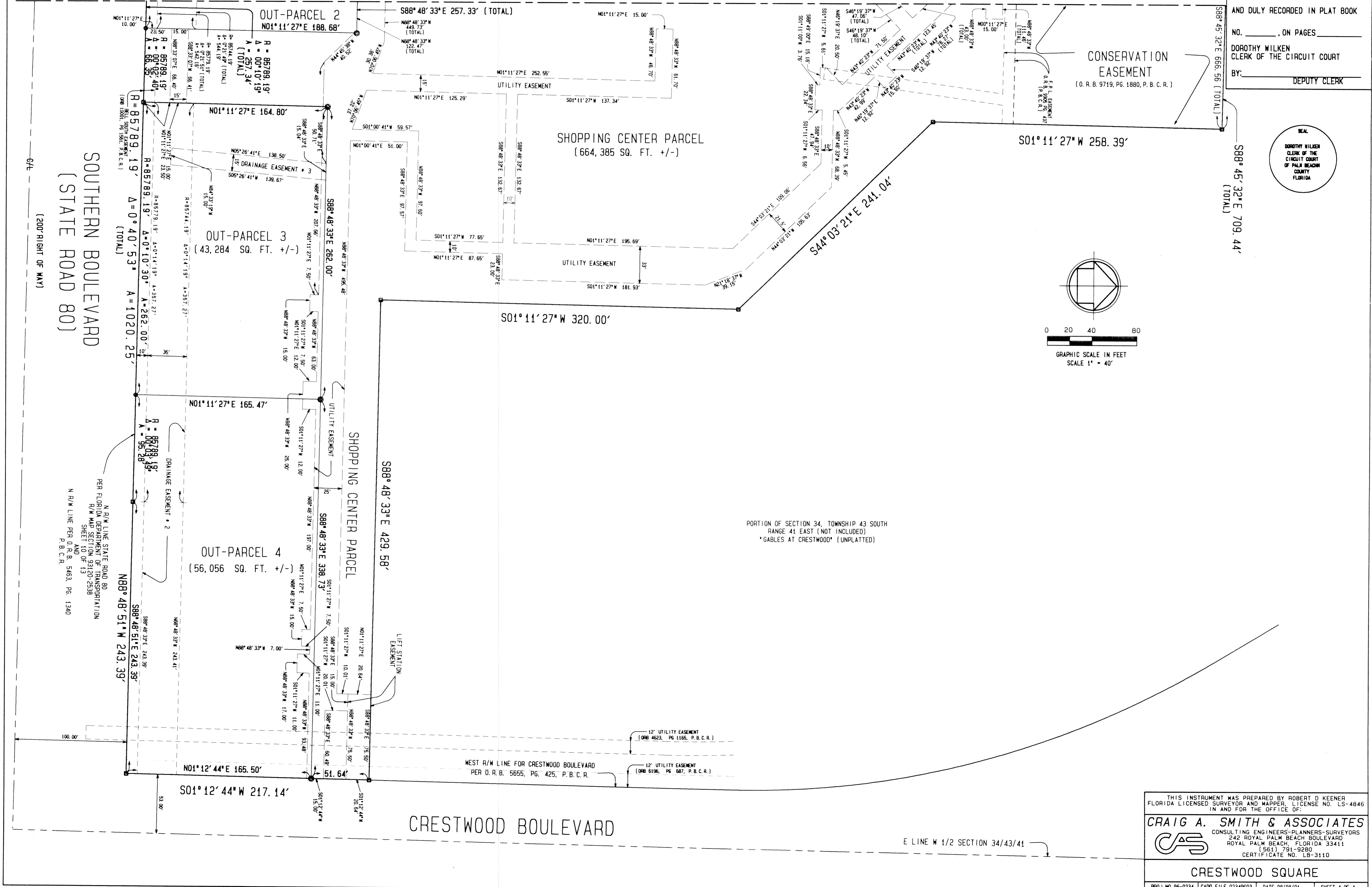
CRESTWOOD SQUARE

A PORTION OF SECTION 34, TOWNSHIP 43 SOUTH, RANGE 41 EAST
 VILLAGE OF ROYAL PALM BEACH
 PALM BEACH COUNTY, FLORIDA
 AUGUST, 2001

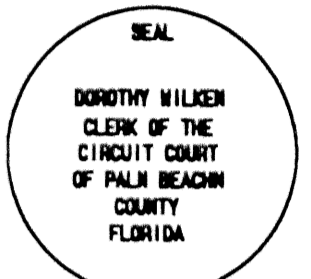
58

STATE OF FLORIDA)
 COUNTY OF PALM BEACH)
 THIS PLAT WAS FILED FOR RECORD
 AT _____, THIS _____ DAY
 OF _____, 2001
 AND DULY RECORDED IN PLAT BOOK
 NO. _____, ON PAGES _____
 DOROTHY WILKEN
 CLERK OF THE CIRCUIT COURT
 BY: _____ DEPUTY CLERK

MATCH LINE - SEE SHEET 3 OF 4



PORTION OF SECTION 34, TOWNSHIP 43 SOUTH
 RANGE 41 EAST (NOT INCLUDED)
 * GABLES AT CRESTWOOD* (UNPLATTED)



SOUTHERN BOULEVARD
 (STATE ROAD 80)
 (200' RIGHT OF WAY)

CRESTWOOD BOULEVARD

THIS INSTRUMENT WAS PREPARED BY ROBERT D. KEENER
 FLORIDA LICENSED SURVEYOR AND MAPPER, LICENSE NO. LS-4846
 IN AND FOR THE OFFICE OF:
CRAIG A. SMITH & ASSOCIATES
 CONSULTING ENGINEERS-PLANNERS-SURVEYORS
 242 ROYAL PALM BEACH BOULEVARD
 ROYAL PALM BEACH, FLORIDA 33411
 (561) 791-9280
 CERTIFICATE NO. LB-3110