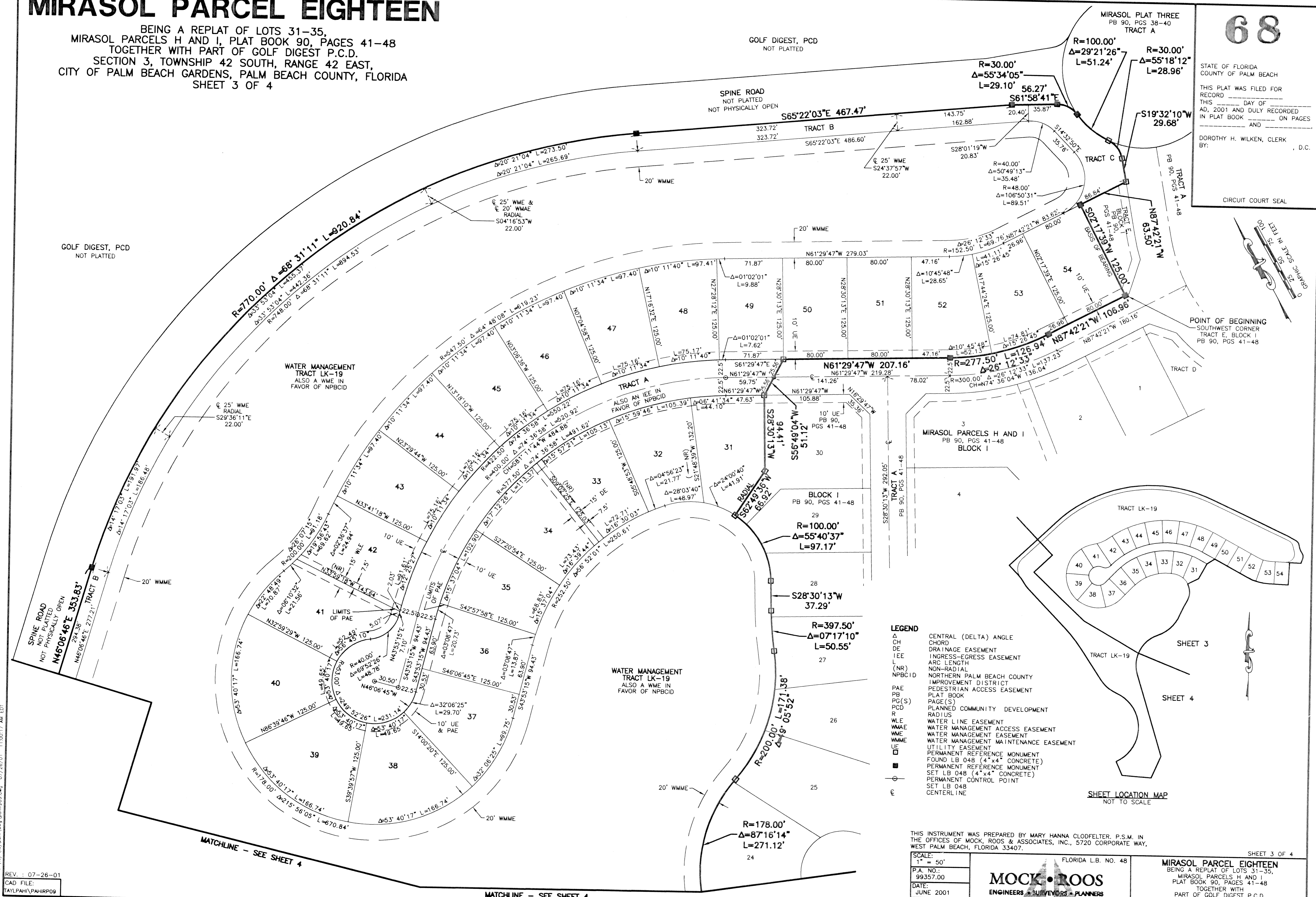
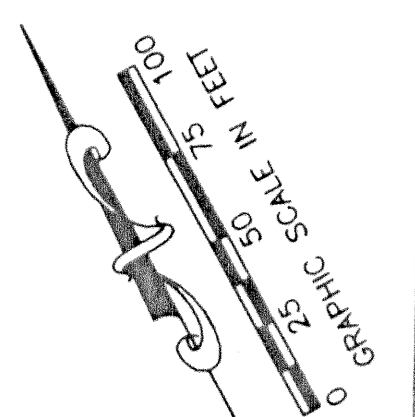


MIRASOL PARCEL EIGHTEEN

BEING A REPLAT OF LOTS 31-35,
MIRASOL PARCELS H AND I, PLAT BOOK 90, PAGES 41-48
TOGETHER WITH PART OF GOLF DIGEST P.C.D.
SECTION 3, TOWNSHIP 42 SOUTH, RANGE 42 EAST,
CITY OF PALM BEACH GARDENS, PALM BEACH COUNTY, FLORIDA
SHEET 3 OF 4

68

STATE OF FLORIDA
COUNTY OF PALM BEACH
THIS PLAN WAS FILED FOR
RECORD _____ DAY OF _____
AD, 2001 AND DULY RECORDED
IN PLAT BOOK _____ ON PAGES
_____ AND _____
DOROTHY H. WILKEN, CLERK
BY: _____, D.C.
CIRCUIT COURT SEAL



- LEGEND**
- Δ CENTRAL (DELTA) ANGLE
 - CH CHORD
 - DE DRAINAGE EASEMENT
 - IEE INGRESS-EGRESS EASEMENT
 - L ARC LENGTH
 - (NR) NON-RADIAL
 - NPBC1D NORTHERN PALM BEACH COUNTY IMPROVEMENT DISTRICT
 - P/AE PEDESTRIAN ACCESS EASEMENT
 - PB PLAT BOOK
 - PG(S) PAGE(S)
 - PCD PLANNED COMMUNITY DEVELOPMENT
 - R RADIUS
 - WLE WATER LINE EASEMENT
 - WMAE WATER MANAGEMENT ACCESS EASEMENT
 - WME WATER MANAGEMENT EASEMENT
 - WMME WATER MANAGEMENT MAINTENANCE EASEMENT
 - UE UTILITY EASEMENT
 - PERMANENT REFERENCE MONUMENT FOUND LB 048 (4"x4" CONCRETE)
 - PERMANENT REFERENCE MONUMENT SET LB 048 (4"x4" CONCRETE)
 - PERMANENT CONTROL POINT
 - ⊕ CENTERLINE

THIS INSTRUMENT WAS PREPARED BY MARY HANNA CLODFELTER, P.S.M. IN THE OFFICES OF MOCK, ROOS, & ASSOCIATES, INC., 5720 CORPORATE WAY, WEST PALM BEACH, FLORIDA 33407.

SCALE:
1" = 50'
P.A. NO.:
99357.00
DATE:
JUNE 2001
DRAWING NO.:
42-42-03-62

FLORIDA L.B. NO. 48
MOCK • ROOS
ENGINEERS • SURVEYORS • PLANNERS
5720 Corporate Way, West Palm Beach, Florida 33407
(561) 683-3113, fax 478-7248

SHEET 3 OF 4
MIRASOL PARCEL EIGHTEEN
BEING A REPLAT OF LOTS 31-35,
MIRASOL PARCELS H AND I,
PLAT BOOK 90, PAGES 41-48
TOGETHER WITH
PART OF GOLF DIGEST P.C.D.
SECTION 3, TOWNSHIP 42 SOUTH, RANGE 42 EAST,
CITY OF PALM BEACH GARDENS,
PALM BEACH COUNTY, FLORIDA

S:\lay\top\psh\dwg\pmp\p09.dwg 07/26/01 11:00:17 AM EDT

REV: 07-26-01
CAD FILE:
TAYLPAH\PAHRP09

MATCHLINE - SEE SHEET 4

MATCHLINE - SEE SHEET 4